

Converting Colors

CIELCh(80, 13.558, 359.929)

Have a look what the booklet for
CIELCh(80, 13.558, 359.929)
contains.

CIELCh(80, 13.558, 359.929)	3
<i>Conversions</i>	4
<i>Details</i>	6
<i>Harmonies</i>	12
<i>Previews</i>	21
<i>Color Blindness Simulation</i>	24
<i>CSS Examples</i>	27

Color

CIELCh(80, 13.558, 359.929)

Conversions

Conversions Part 1

Format	Color
Hex	E0BEC7
RGB	224, 190, 199
RGB Percent	88%, 75%, 78%
CMY	0.1223, 0.2556, 0.2203
CMYK	0.00, 0.15, 0.11, 0.12
HSL	344°, 35%, 81%
HSV	344°, 15%, 88%
XYZ	59.3448, 56.6813, 61.7351
YIQ	201.1920, 17.3750, 10.0070

Conversions

Conversions Part 2

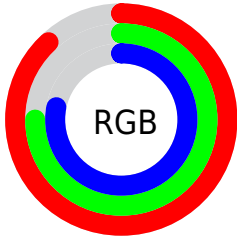
Format	Color
R _Y B	224, 190, 199
Decimal	14728903
CIE Lab	80.00, 13.56, -0.02
CIE LCh	80, 13.558, 359.929
Yxy	56.6813, 0.3338, 0.3189
Android (android.graphics.Color)	4292918983 (0xFFE0BEC7)
YUV	201.1920, -1.0807, 20.0026
Hunter-Lab	75.2870, 8.9501, 4.0833

Details

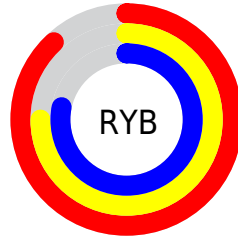
The CIELCh color **80, 13.558, 359.929** is a light color, and the websafe version is hex **FFCCCC**. A complement of this color would be **87, 12.903, 177.075**, and the grayscale version is **81, 0.010, 296.813**.

A 20% lighter version of the original color is **98, 5.604, 324.582**, and **60, 13.089, 0.748** is the 20% darker color. If you saturate the color by 10%, you get **74, 22.937, 1.160**, and if you desaturate by 10%, it is **86, 4.528, 358.823**.

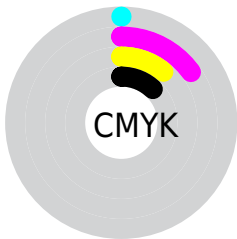
Distribution



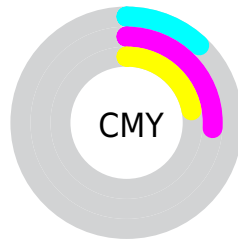
- Red (88%)
- Green (75%)
- Blue (78%)



- Red (88%)
- Yellow (75%)
- Blue (78%)



- Cyan (0%)
- Magenta (15%)
- Yellow (11%)
- Black (12%)





- Cyan (12%)
- Magenta (26%)
- Yellow (22%)


Brightness & Saturation Gradients


These gradients show how the CIELCh color 80, 13.558, 359.929 changes by changing the brightness by 10 percent. The first figure shows a shift by +10% for each color and the second figure -10%.


Similar to the brightness gradients but the following saturation gradients show a change of the CIELCh color 80, 13.558, 359.929 by changing the saturation by 10% instead.


 80, 13.558,
359.929


 80, 13.558,
359.929


 100, 13.558,
359.929


 70, 13.558,
359.929


 60, 13.558,
359.929

 50, 13.558,
359.929

 40, 13.558,
359.929

 30, 13.558,
359.929

 20, 13.558,
359.929

 10, 13.558,

359.929

0, 13.558, 359.929

80, 13.558,
359.929

80, 13.558,
359.929

74, 22.937, 1.160

86, 4.528, 358.823

69, 32.555, 2.608

92, 4.092, 178.173

63, 42.204, 4.364

98, 11.302,
180.804

59, 51.574, 6.543

98, 10.560,
198.802

55, 60.266, 9.289

51, 67.871, 12.772

49, 74.131, 17.135

■ 48, 79.120, 22.379

■ 47, 81.357, 25.012

Harmonies

Complementary

The Complementary color scheme is a pair of colors which are on the opposite of each other on the color wheel.



80, 13.558, 359.929



87, 12.903, 177.075

Rectangle

The Rectangle color scheme consists of four colors that form a rectangle on the color wheel.



80, 13.558, 359.929



80, 13.558, 49.929



80, 13.558, 179.929



80, 13.558, 229.929

Sweetspot

The Sweet Spot groups the original color and five complimentary colors.



80, 13.556, 359.935



97, 4.851, 358.805



80, 20.244, 317.419



51, 3.315, 358.888



0, 0.000, 0.000



53, 0.007, 296.813

Same Dimension

The Same Dimension uses a secret algorithm to generate beautiful new colors.



80, 13.556, 359.935



88, 17.971, 0.277



82, 10.765, 42.864



44, 5.015, 359.298



37, 67.520, 24.007



6, 25.309, 9.523

Inverse Universe

The Inverse Universe completely reimagines the original color for something new.



80, 13.556, 359.935



88, 17.971, 0.277



85, 9.790, 224.217



44, 5.015, 359.298



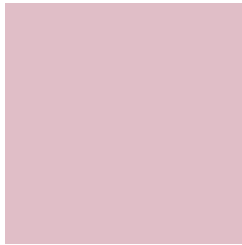
37, 67.520, 24.007



6, 25.309, 9.523

Previews

White Background



This preview shows how the CIELCh color 80, 13.558, 359.929 looks on a white background.

Color Contrast Check

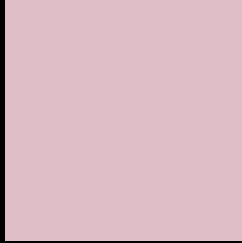
Large Text (above 18pt) WCAG AA × Fail

Any Text WCAG AA × Fail

Large Text (above 18pt) WCAG AAA × Fail

Any Text WCAG AAA × Fail

Black Background



This preview shows how the CIELCh color 80, 13.558, 359.929 looks on a black background.

Color Contrast Check

Large Text (above 18pt) WCAG AA ✓ Pass

Any Text WCAG AA ✓ Pass

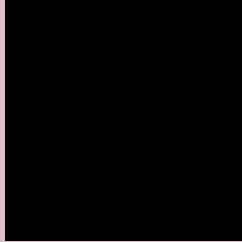
Large Text (above 18pt) WCAG AAA ✓ Pass

Any Text WCAG AAA ✓ Pass

If you want to check with other color combinations, try the [Color Contrast Checker](#).

CIELCh 80, 13.558, 359.929

Background



This preview shows how black text looks on a background with the CIELCh color 80, 13.558, 359.929.

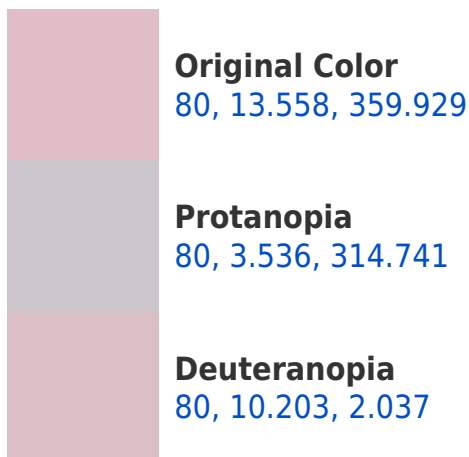


This preview shows how white text looks on a background with the CIELCh color 80, 13.558, 359.929.

Color Blindness Simulation

Color vision deficiency is a very complex topic, and I could not describe the different causes any better than Wikipedia does, so if you want to learn more, you should check out their [article about color blindness](#).

Dichromacy





Tritanopia
80, 15.203, 349.103

Trichromacy



Original Color
80, 13.558, 359.929

Protanomaly
80, 6.686, 346.033

Deuteranomaly
80, 11.442, 1.396

Tritanomaly
80, 14.712, 352.679

Monochromacy



Original Color
80, 13.558, 359.929

Achromatopsia
81, 0.010, 296.813

Achromatomaly
81, 4.715, 359.943

CSS Examples

Text

The CSS property to change the color of the text to CIELCh 80, 13.558, 359.929 is called "color". The color property can be set on classes, ids or directly on the HTML element.

This example shows how text in the color `rgb(224, 190, 199)` looks like.

```
.text, #text, p{  
    color:rgb(224, 190, 199)  
}
```

If you want to add a text shadow in that color use the text-shadow property, you can generate a text shadow directly with our [CSS Text Shadow Generator](#).

Here you see how black text with a 4 pixel rgb(224, 190, 199) colored shadow looks like.

```
.shadow{ text-shadow: 4px 4px 2px rgb(224, 190, 199) }
```

Border

The CSS property to change the border of an element to CIELCh 80, 13.558, 359.929 is called "border". The border property can be set on classes, ids or directly on the HTML element.

This example shows the color as border, it can be applied via the CSS property "border" or "border-color".

```
.border, #border, table{ border:4px solid rgb(224, 190, 199) }
```

If only the border color should be changed use the property `border-color`.

```
.border{ border-color:rgb(224, 190, 199) }
```

If you want to add a box shadow in that color use:

Here you see how a box with a 4 pixel `rgb(224, 190, 199)` colored shadow looks like.

```
.boxshadow{ -moz-box-shadow:4px 4px 4px  
4px rgb(224, 190, 199); -webkit-box-  
shadow:4px 4px 4px 4px rgb(224, 190, 199);  
box-shadow:4px 4px 4px 4px rgb(224, 190,  
199) }
```

Background

The CSS property to change the background color of an element to CIELCh 80, 13.558, 359.929 is called "background". The background property can be set on classes, ids or directly on the HTML element.

```
.background, #background, body{  
background: rgb(224, 190, 199) }
```

If only the background color should be changed can be used:

```
.background{ background-color: rgb(224,  
190, 199) }
```

This example shows the color as background, it is applied via the CSS property "background".

To optimize and compress your CSS code, you can use our [online CSS compressor and optimizer](#) based on csstidy. If you want to create a linear or radial gradient as background or border, check our [CSS Gradient Generator](#).

Hey! You found this booklet interesting? Support Converting Colors with the new Membership Option!

The pro membership hides all ads, plus gives you double the colors in the color bucket, and more awesome pro features!

[Learn more, Memberships starting at \\$2.50/m!](#)

**Follow me
on Twitter!**

@ConvertingColor