

Converting Colors

CIELCh(80, 13.611, 43.299)

Have a look what the booklet for
CIELCh(80, 13.611, 43.299) contains.

CIELCh(80, 13.710, 45.282)	3
<i>Conversions</i>	4
<i>Details</i>	6
<i>Harmonies</i>	11
<i>Previews</i>	20
<i>Color Blindness Simulation</i>	23
<i>CSS Examples</i>	26

Color

CIELCh(80, 13.710, 45.282)

Conversions

Conversions Part 1

Format	Color
Hex	E0C0B5
RGB	224, 192, 181
RGB Percent	88%, 75%, 71%
CMY	0.1228, 0.2483, 0.2914
CMYK	0.00, 0.14, 0.19, 0.12
HSL	15°, 41%, 79%
HSV	15°, 19%, 88%
XYZ	57.7302, 56.6813, 51.4476
YIQ	200.3140, 22.6030, 3.3630

Conversions

Conversions Part 2

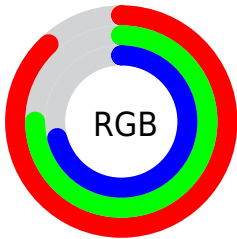
Format	Color
RYB	224, 196, 181
Decimal	14729397
CIELab	80.00, 9.65, 9.74
CIELCh	80, 13.710, 45.282
Yxy	56.6813, 0.3481, 0.3417
Android (android.graphics.Color)	4292919477 (0xFFE0C0B5)
YUV	200.3140, -9.5218, 20.7726
Hunter-Lab	75.2870, 5.1220, 12.1849

Details

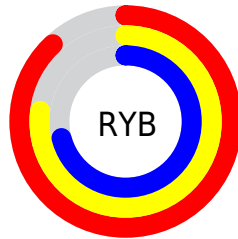
The CIELCh color $80, 13.710, 45.282$ is a light color, and the websafe version is hex `FFCCCC`. A complement of this color would be $83, 12.169, 227.420$, and the grayscale version is $81, 0.010, 296.813$.

A 20% lighter version of the original color is $98, 6.113, 85.472$, and $60, 13.589, 47.285$ is the 20% darker color. If you saturate the color by 10%, you get $75, 21.708, 45.023$, and if you desaturate by 10%, it is $85, 6.318, 45.629$.

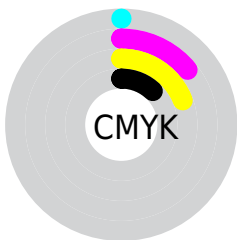
Distribution



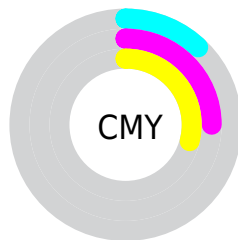
- Red (88%)
- Green (75%)
- Blue (71%)



- Red (88%)
- Yellow (77%)
- Blue (71%)



- Cyan (0%)
- Magenta (14%)
- Yellow (19%)
- Black (12%)



- Cyan (12%)
- Magenta (25%)
- Yellow (29%)

Brightness & Saturation Gradients

These gradients show how the CIELCh color 80, 13.710, 45.282 changes by changing the brightness by 10 percent. The first figure shows a shift by +10% for each color and the second figure -10%.

Similar to the brightness gradients but the following saturation gradients show a change of the CIELCh color 80, 13.710, 45.282 by changing the saturation by 10% instead.

80, 13.710, 45.282

80, 13.710, 45.282

100, 13.710,
45.282

70, 13.710, 45.282

60, 13.710, 45.282

50, 13.710, 45.282

40, 13.710, 45.282

30, 13.710, 45.282

20, 13.710, 45.282

10, 13.710, 45.282

0, 13.710, 45.282

80, 13.710, 45.282

80, 13.710, 45.282

75, 21.708, 45.023

85, 6.318, 45.629

71, 30.354, 44.871

89, 0.520, 227.275

67, 39.657, 44.869

94, 6.861, 226.769

63, 49.572, 45.035

98, 10.605,
198.799

59, 59.941, 45.350

56, 70.375, 45.703

53, 79.989, 45.775

51, 87.446, 45.140

50, 88.000, 45.120

Harmonies

Complementary

The Complementary color scheme is a pair of colors which are on the opposite of each other on the color wheel.



80, 13.710, 45.282



83, 12.169, 227.420

Rectangle

The Rectangle color scheme consists of four colors that form a rectangle on the color wheel.



80, 13.710, 45.282



80, 13.710, 95.282



80, 13.710, 225.282



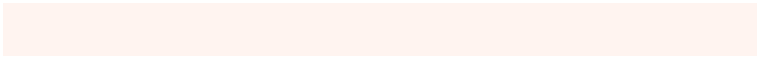
80, 13.710, 275.282

Sweetspot

The Sweet Spot groups the original color and five complimentary colors.



80, 13.709, 45.293



97, 4.516, 45.718



78, 23.244, 333.606



51, 3.003, 45.703



0, 0.000, 0.000



53, 0.007, 296.813

Same Dimension

The Same Dimension uses a secret algorithm to generate beautiful new colors.



80, 13.709, 45.293



88, 18.542, 45.175



85, 17.347, 94.914



45, 3.906, 45.621



40, 73.129, 45.590



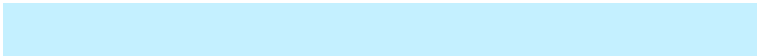
8, 21.563, 36.153

Inverse Universe

The Inverse Universe completely reimagines the original color for something new.



83, 12.169, 227.420



92, 16.015, 227.761



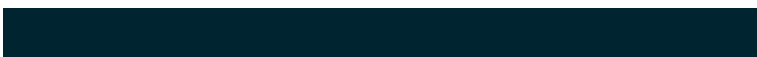
78, 17.572, 279.827



46, 3.696, 226.751



51, 34.834, 247.280



12, 13.771, 238.507

Previews

White Background



This preview shows how the CIELCh color 80, 13.710, 45.282 looks on a white background.

Color Contrast Check

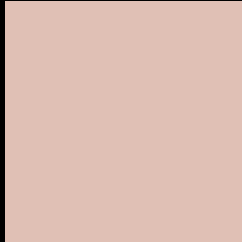
Large Text (above 18pt) WCAG AA × Fail

Any Text WCAG AA × Fail

Large Text (above 18pt) WCAG AAA × Fail

Any Text WCAG AAA × Fail

Black Background



This preview shows how the CIELCh color 80, 13.710, 45.282 looks on a black background.

Color Contrast Check

Large Text (above 18pt) WCAG AA ✓ Pass

Any Text WCAG AA ✓ Pass

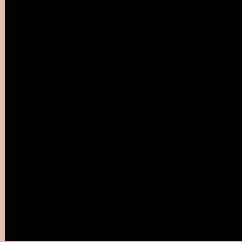
Large Text (above 18pt) WCAG AAA ✓ Pass

Any Text WCAG AAA ✓ Pass

If you want to check with other color combinations, try the [Color Contrast Checker](#).

CIELCh 80, 13.710, 45.282

Background



This preview shows how black text looks on a background with the CIELCh color 80, 13.710, 45.282.



This preview shows how white text looks on a background with the CIELCh color 80, 13.710, 45.282.

Color Blindness Simulation

Color vision deficiency is a very complex topic, and I could not describe the different causes any better than Wikipedia does, so if you want to learn more, you should check out their [article about color blindness](#).

Dichromacy



Original Color

80, 13.710, 45.282

Protanopia

80, 8.006, 87.253

Deuteranopia

80, 13.847, 42.694



Tritanopia
80, 16.183, 351.319

Trichromacy



Original Color
80, 13.710, 45.282

Protanomaly
80, 9.207, 68.018

Deuteranomaly
80, 13.847, 42.694

Tritanomaly
80, 13.907, 7.338

Monochromacy



Original Color
80, 13.710, 45.282

Achromatopsia
81, 0.010, 296.813

Achromatomaly
80, 4.945, 44.980

CSS Examples

Text

The CSS property to change the color of the text to CIELCh 80, 13.710, 45.282 is called "color". The color property can be set on classes, ids or directly on the HTML element.

This example shows how text in the color `rgb(224, 192, 181)` looks like.

```
.text, #text, p{  
    color:rgb(224, 192, 181)  
}
```

If you want to add a text shadow in that color use the text-shadow property, you can generate a text shadow directly with our [CSS Text Shadow Generator](#).

Here you see how black text with a 4 pixel rgb(224, 192, 181) colored shadow looks like.

```
.shadow{ text-shadow: 4px 4px 2px rgb(224, 192, 181) }
```

Border

The CSS property to change the border of an element to CIELCh 80, 13.710, 45.282 is called "border". The border property can be set on classes, ids or directly on the HTML element.

This example shows the color as border, it can be applied via the CSS property "border" or "border-color".

```
.border, #border, table{ border:4px solid rgb(224, 192, 181) }
```

If only the border color should be changed use the property border-color.

```
.border{ border-color:rgb(224, 192, 181) }
```

If you want to add a box shadow in that color use:

Here you see how a box with a 4 pixel rgb(224, 192, 181) colored shadow looks like.

```
.boxshadow{ -moz-box-shadow:4px 4px 4px  
4px rgb(224, 192, 181); -webkit-box-  
shadow:4px 4px 4px 4px rgb(224, 192, 181);  
box-shadow:4px 4px 4px 4px rgb(224, 192,  
181) }
```

Background

The CSS property to change the background color of an element to CIELCh 80, 13.710, 45.282 is called "background". The background property can be set on classes, ids or directly on the HTML element.

```
.background, #background, body{  
background: rgb(224, 192, 181) }
```

If only the background color should be changed can be used:

```
.background{ background-color: rgb(224,  
192, 181) }
```

This example shows the color as background, it is applied via the CSS property "background".

To optimize and compress your CSS code, you can use our [online CSS compressor and optimizer](#) based on csstidy. If you want to create a linear or radial gradient as background or border, check our [CSS Gradient Generator](#).

Hey! You found this booklet interesting? Support Converting Colors with the new Membership Option!

The pro membership hides all ads, plus gives you double the colors in the color bucket, and more awesome pro features!

[Learn more, Memberships starting at \\$2.50/m!](#)

**Follow me
on Twitter!**

@ConvertingColor