

Converting Colors

CIELCh(80, 13.787, 38.506)

Have a look what the booklet for
CIELCh(80, 13.787, 38.506) contains.

CIELCh(80, 13.794, 38.155)	3
<i>Conversions</i>	4
<i>Details</i>	6
<i>Harmonies</i>	11
<i>Previews</i>	20
<i>Color Blindness Simulation</i>	23
<i>CSS Examples</i>	26

Color

CIELCh(80, 13.794, 38.155)

Conversions

Conversions Part 1

Format	Color
Hex	E1BFB7
RGB	225, 191, 183
RGB Percent	88%, 75%, 72%
CMY	0.1177, 0.2510, 0.2824
CMYK	0.00, 0.15, 0.19, 0.12
HSL	11°, 41%, 80%
HSV	11°, 19%, 88%
XYZ	58.2225, 56.6813, 52.6661
YIQ	200.2540, 22.8320, 4.7200

Conversions

Conversions Part 2

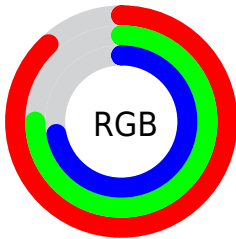
Format	Color
R _Y B	225, 193, 183
Decimal	14794679
CIE Lab	80.00, 10.85, 8.52
CIE LCh	80, 13.794, 38.155
Yxy	56.6813, 0.3475, 0.3383
Android (android.graphics.Color)	4292984759 (0xFFE1BFB7)
YUV	200.2540, -8.5062, 21.7022
Hunter-Lab	75.2870, 6.2891, 11.2253

Details

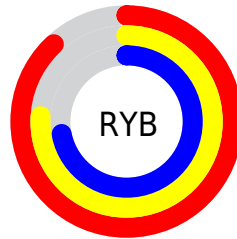
The CIELCh color **80, 13.794, 38.155** is a light color, and the websafe version is hex **FFCCCC**. A complement of this color would be **85, 12.190, 219.012**, and the grayscale version is **81, 0.010, 296.813**.

A 20% lighter version of the original color is **98, 4.955, 74.563**, and **60, 13.620, 39.704** is the 20% darker color. If you saturate the color by 10%, you get **75, 22.091, 38.259**, and if you desaturate by 10%, it is **85, 6.143, 38.167**.

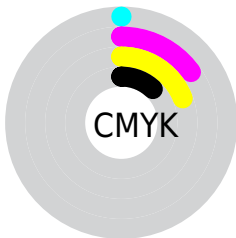
Distribution



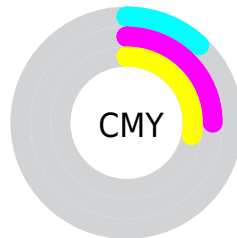
- Red (88%)
- Green (75%)
- Blue (72%)



- Red (88%)
- Yellow (76%)
- Blue (72%)



- Cyan (0%)
- Magenta (15%)
- Yellow (19%)
- Black (12%)



- Cyan (12%)
- Magenta (25%)
- Yellow (28%)

Brightness & Saturation Gradients

These gradients show how the CIELCh color 80, 13.794, 38.155 changes by changing the brightness by 10 percent. The first figure shows a shift by +10% for each color and the second figure -10%.

Similar to the brightness gradients but the following saturation gradients show a change of the CIELCh color 80, 13.794, 38.155 by changing the saturation by 10% instead.

80, 13.794, 38.155

80, 13.794, 38.155

100, 13.794,
38.155

70, 13.794, 38.155

60, 13.794, 38.155

50, 13.794, 38.155

40, 13.794, 38.155

30, 13.794, 38.155

20, 13.794, 38.155

10, 13.794, 38.155

0, 13.794, 38.155

80, 13.794, 38.155

80, 13.794, 38.155

75, 22.091, 38.259

85, 6.143, 38.167

70, 31.071, 38.514

90, 0.910, 219.074

66, 40.733, 38.977

95, 7.427, 218.729

61, 51.014, 39.682

98, 10.176,
198.828

58, 61.744, 40.631

54, 72.529, 41.732

51, 82.486, 42.660

49, 90.079, 42.855

49, 91.000, 42.924

Harmonies

Complementary

The Complementary color scheme is a pair of colors which are on the opposite of each other on the color wheel.



80, 13.794, 38.155



85, 12.190, 219.012

Rectangle

The Rectangle color scheme consists of four colors that form a rectangle on the color wheel.



80, 13.794, 38.155



80, 13.794, 88.155



80, 13.794, 218.155



80, 13.794, 268.155

Sweetspot

The Sweet Spot groups the original color and five complimentary colors.



80, 13.793, 38.166



97, 4.657, 38.156



79, 23.767, 331.104



51, 3.097, 38.161



0, 0.000, 0.000



53, 0.007, 296.813

Same Dimension

The Same Dimension uses a secret algorithm to generate beautiful new colors.



80, 13.793, 38.166



88, 18.258, 38.183



85, 15.862, 90.079



44, 4.029, 38.167



38, 75.331, 43.303



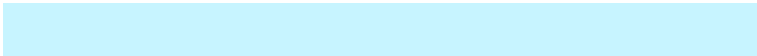
8, 22.469, 31.593

Inverse Universe

The Inverse Universe completely reimagines the original color for something new.



85, 12.190, 219.012



94, 15.728, 219.174



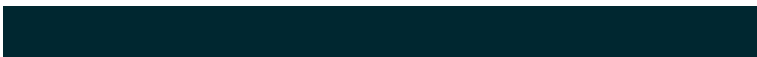
79, 15.858, 275.058



46, 3.797, 218.711



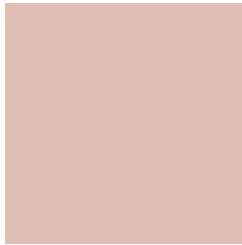
55, 33.119, 233.362



14, 13.541, 226.613

Previews

White Background



This preview shows how the CIELCh color 80, 13.794, 38.155 looks on a white background.

Color Contrast Check

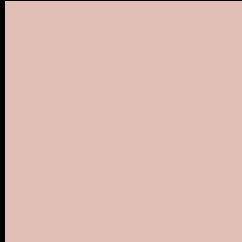
Large Text (above 18pt) WCAG AA × Fail

Any Text WCAG AA × Fail

Large Text (above 18pt) WCAG AAA × Fail

Any Text WCAG AAA × Fail

Black Background



This preview shows how the CIELCh color 80, 13.794, 38.155 looks on a black background.

Color Contrast Check

Large Text (above 18pt) WCAG AA ✓ Pass

Any Text WCAG AA ✓ Pass

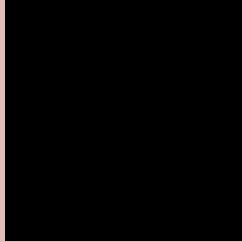
Large Text (above 18pt) WCAG AAA ✓ Pass

Any Text WCAG AAA ✓ Pass

If you want to check with other color combinations, try the [Color Contrast Checker](#).

CIELCh 80, 13.794, 38.155

Background



This preview shows how black text looks on a background with the CIELCh color 80, 13.794, 38.155.

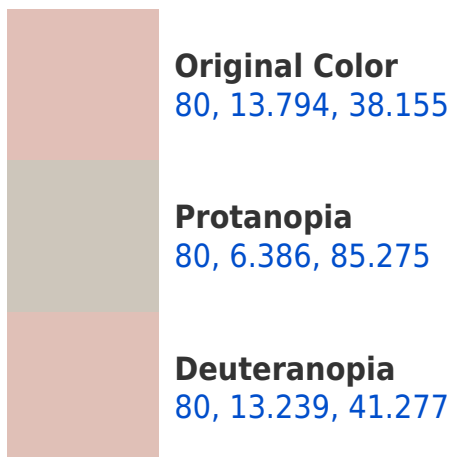



This preview shows how white text looks on a background with the CIELCh color 80, 13.794, 38.155.

Color Blindness Simulation

Color vision deficiency is a very complex topic, and I could not describe the different causes any better than Wikipedia does, so if you want to learn more, you should check out their [article about color blindness](#).

Dichromacy





Tritanopia
80, 16.510, 352.002

Trichromacy



Original Color
80, 13.794, 38.155

Protanomaly
80, 8.021, 56.207

Deuteranomaly
80, 13.239, 41.277

Tritanomaly
80, 14.382, 5.659

Monochromacy



Original Color
80, 13.794, 38.155

Achromatopsia
81, 0.010, 296.813

Achromatomaly
80, 4.736, 39.219

CSS Examples

Text

The CSS property to change the color of the text to CIELCh 80, 13.794, 38.155 is called "color". The color property can be set on classes, ids or directly on the HTML element.

This example shows how text in the color `rgb(225, 191, 183)` looks like.

```
.text, #text, p{  
    color:rgb(225, 191, 183)  
}
```

If you want to add a text shadow in that color use the text-shadow property, you can generate a text shadow directly with our [CSS Text Shadow Generator](#).

Here you see how black text with a 4 pixel rgb(225, 191, 183) colored shadow looks like.

```
.shadow{ text-shadow: 4px 4px 2px rgb(225, 191, 183) }
```

Border

The CSS property to change the border of an element to CIELCh 80, 13.794, 38.155 is called "border". The border property can be set on classes, ids or directly on the HTML element.

This example shows the color as border, it can be applied via the CSS property "border" or "border-color".

```
.border, #border, table{ border:4px solid rgb(225, 191, 183) }
```

If only the border color should be changed use the property `border-color`.

```
.border{ border-color:rgb(225, 191, 183) }
```

If you want to add a box shadow in that color use:

Here you see how a box with a 4 pixel `rgb(225, 191, 183)` colored shadow looks like.

```
.boxshadow{ -moz-box-shadow:4px 4px 4px 4px rgb(225, 191, 183); -webkit-box-shadow:4px 4px 4px 4px rgb(225, 191, 183); box-shadow:4px 4px 4px 4px rgb(225, 191, 183) }
```

Background

The CSS property to change the background color of an element to CIELCh 80, 13.794, 38.155 is called "background". The background property can be set on classes, ids or directly on the HTML element.

```
.background, #background, body{  
background: rgb(225, 191, 183) }
```

If only the background color should be changed can be used:

```
.background{ background-color: rgb(225,  
191, 183) }
```

This example shows the color as background, it is applied via the CSS property "background".

To optimize and compress your CSS code, you can use our [online CSS compressor and optimizer](#) based on csstidy. If you want to create a linear or radial gradient as background or border, check our [CSS Gradient Generator](#).

Hey! You found this booklet interesting? Support Converting Colors with the new Membership Option!

The pro membership hides all ads, plus gives you double the colors in the color bucket, and more awesome pro features!

[Learn more, Memberships starting at \\$2.50/m!](#)

**Follow me
on Twitter!**

@ConvertingColor