

Converting Colors

CIELCh(80, 14.536, 50.744)

Have a look what the booklet for
CIELCh(80, 14.536, 50.744) contains.

CIELCh(80, 14.536, 50.744)	3
<i>Conversions</i>	4
<i>Details</i>	6
<i>Harmonies</i>	11
<i>Previews</i>	20
<i>Color Blindness Simulation</i>	23
<i>CSS Examples</i>	26

Color

CIELCh(80, 14.536, 50.744)

Conversions

Conversions Part 1

Format	Color
Hex	E0C0B2
RGB	224, 192, 178
RGB Percent	88%, 75%, 70%
CMY	0.1221, 0.2475, 0.3024
CMYK	0.00, 0.14, 0.21, 0.12
HSL	18°, 42%, 79%
HSV	18°, 21%, 88%
XYZ	57.5470, 56.6813, 49.9625
YIQ	199.9720, 23.5660, 2.4300

Conversions

Conversions Part 2

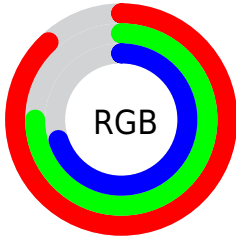
Format	Color
R _Y B	224, 198, 178
Decimal	14729394
CIE Lab	80.00, 9.20, 11.26
CIE LCh	80, 14.536, 50.744
Yxy	56.6813, 0.3505, 0.3452
Android (android.graphics.Color)	4292919474 (0xFFE0C0B2)
YUV	199.9720, -10.8322, 21.0726
Hunter-Lab	75.2870, 4.6876, 13.3544

Details

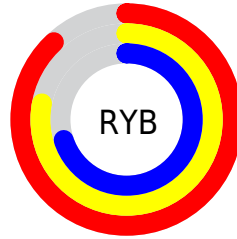
The CIELCh color **80, 14.536, 50.744** is a light color, and the websafe version is hex **FFCCCC**. A complement of this color would be **82, 12.921, 233.981**, and the grayscale version is **81, 0.010, 296.813**.

A 20% lighter version of the original color is **98, 7.536, 90.058**, and **60, 14.535, 52.892** is the 20% darker color. If you saturate the color by 10%, you get **76, 22.464, 50.230**, and if you desaturate by 10%, it is **84, 7.182, 51.330**.

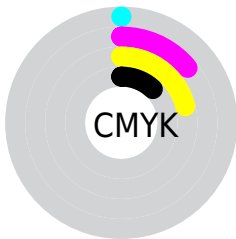
Distribution



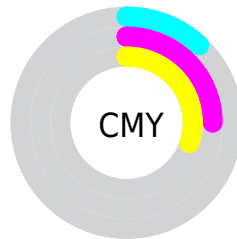
- Red (88%)
- Green (75%)
- Blue (70%)



- Red (88%)
- Yellow (78%)
- Blue (70%)



- Cyan (0%)
- Magenta (14%)
- Yellow (21%)
- Black (12%)



- Cyan (12%)
- Magenta (25%)
- Yellow (30%)

Brightness & Saturation Gradients

These gradients show how the CIELCh color 80, 14.536, 50.744 changes by changing the brightness by 10 percent. The first figure shows a shift by +10% for each color and the second figure -10%.

Similar to the brightness gradients but the following saturation gradients show a change of the CIELCh color 80, 14.536, 50.744 by changing the saturation by 10% instead.

80, 14.536, 50.744

80, 14.536, 50.744

100, 14.536,
50.744

70, 14.536, 50.744

60, 14.536, 50.744

50, 14.536, 50.744

40, 14.536, 50.744

30, 14.536, 50.744

20, 14.536, 50.744

10, 14.536, 50.744

0, 14.536, 50.744

80, 14.536, 50.744

80, 14.536, 50.744

76, 22.464, 50.230

84, 7.182, 51.330

72, 31.005, 49.795

89, 0.354, 50.526

67, 40.166, 49.473

93, 6.006, 232.870

64, 49.895, 49.267

98, 10.258,
201.207

60, 60.018, 49.140

98, 10.541,
198.803

57, 70.100, 48.959

54, 79.188, 48.380

52, 85.884, 47.225

Harmonies

Complementary

The Complementary color scheme is a pair of colors which are on the opposite of each other on the color wheel.



80, 14.536, 50.744



82, 12.921, 233.981

Rectangle

The Rectangle color scheme consists of four colors that form a rectangle on the color wheel.



80, 14.536, 50.744



80, 14.536, 100.744



80, 14.536, 230.744



80, 14.536, 280.744

Sweetspot

The Sweet Spot groups the original color and five complimentary colors.



80, 14.535, 50.755



97, 4.465, 51.566



77, 24.022, 335.724



51, 2.969, 51.536



0, 0.000, 0.000



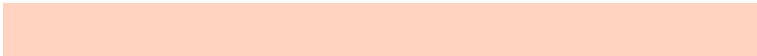
53, 0.007, 296.813

Same Dimension

The Same Dimension uses a secret algorithm to generate beautiful new colors.



80, 14.535, 50.755



88, 20.012, 50.502



86, 19.516, 98.022



45, 3.859, 51.392



41, 71.313, 47.762



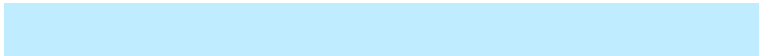
9, 20.937, 40.143

Inverse Universe

The Inverse Universe completely reimagines the original color for something new.



82, 12.921, 233.981



91, 17.265, 234.527



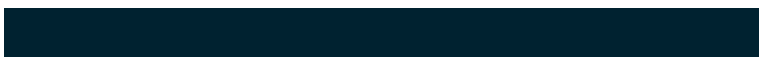
76, 19.965, 283.104



45, 3.670, 232.928



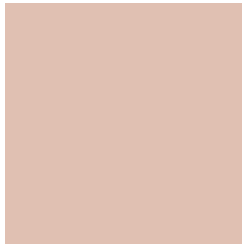
48, 37.271, 256.744



12, 14.293, 247.076

Previews

White Background



This preview shows how the CIELCh color 80, 14.536, 50.744 looks on a white background.

Color Contrast Check

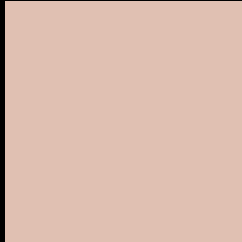
Large Text (above 18pt) WCAG AA × Fail

Any Text WCAG AA × Fail

Large Text (above 18pt) WCAG AAA × Fail

Any Text WCAG AAA × Fail

Black Background



This preview shows how the CIELCh color 80, 14.536, 50.744 looks on a black background.

Color Contrast Check

Large Text (above 18pt) WCAG AA ✓ Pass

Any Text WCAG AA ✓ Pass

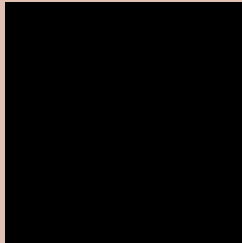
Large Text (above 18pt) WCAG AAA ✓ Pass

Any Text WCAG AAA ✓ Pass

If you want to check with other color combinations, try the [Color Contrast Checker](#).

CIELCh 80, 14.536, 50.744

Background



This preview shows how black text looks on a background with the CIELCh color 80, 14.536, 50.744.



This preview shows how white text looks on a background with the CIELCh color 80, 14.536, 50.744.

Color Blindness Simulation

Color vision deficiency is a very complex topic, and I could not describe the different causes any better than Wikipedia does, so if you want to learn more, you should check out their [article about color blindness](#).

Dichromacy



Original Color


80, 14.536, 50.744

Protanopia

80, 9.505, 90.653

Deuteranopia

80, 14.966, 47.563



Tritanopia
80, 16.510, 352.002

Trichromacy



Original Color
80, 14.536, 50.744

Protanomaly
80, 10.477, 73.538

Deuteranomaly
80, 14.966, 47.563

Tritanomaly
80, 14.198, 9.823

Monochromacy



Original Color
80, 14.536, 50.744

Achromatopsia
81, 0.010, 296.813

Achromatomaly
80, 5.200, 50.220

CSS Examples

Text

The CSS property to change the color of the text to CIELCh 80, 14.536, 50.744 is called "color". The color property can be set on classes, ids or directly on the HTML element.

This example shows how text in the color `rgb(224, 192, 178)` looks like.

```
.text, #text, p{  
    color:rgb(224, 192, 178)  
}
```

If you want to add a text shadow in that color use the text-shadow property, you can generate a text shadow directly with our [CSS Text Shadow Generator](#).

Here you see how black text with a 4 pixel rgb(224, 192, 178) colored shadow looks like.

```
.shadow{ text-shadow: 4px 4px 2px rgb(224, 192, 178) }
```

Border

The CSS property to change the border of an element to CIELCh 80, 14.536, 50.744 is called "border". The border property can be set on classes, ids or directly on the HTML element.

This example shows the color as border, it can be applied via the CSS property "border" or "border-color".

```
.border, #border, table{ border:4px solid rgb(224, 192, 178) }
```

If only the border color should be changed use the property `border-color`.

```
.border{ border-color:rgb(224, 192, 178) }
```

If you want to add a box shadow in that color use:

Here you see how a box with a 4 pixel `rgb(224, 192, 178)` colored shadow looks like.

```
.boxshadow{ -moz-box-shadow:4px 4px 4px  
4px rgb(224, 192, 178); -webkit-box-  
shadow:4px 4px 4px 4px rgb(224, 192, 178);  
box-shadow:4px 4px 4px 4px rgb(224, 192,  
178) }
```

Background

The CSS property to change the background color of an element to CIELCh 80, 14.536, 50.744 is called "background". The background property can be set on classes, ids or directly on the HTML element.

```
.background, #background, body{  
background: rgb(224, 192, 178) }
```

If only the background color should be changed can be used:

```
.background{ background-color: rgb(224,  
192, 178) }
```

This example shows the color as background, it is applied via the CSS property "background".

To optimize and compress your CSS code, you can use our [online CSS compressor and optimizer](#) based on csstidy. If you want to create a linear or radial gradient as background or border, check our [CSS Gradient Generator](#).

Hey! You found this booklet interesting? Support Converting Colors with the new Membership Option!

The pro membership hides all ads, plus gives you double the colors in the color bucket, and more awesome pro features!

[Learn more, Memberships starting at \\$2.50/m!](#)

**Follow me
on Twitter!**

@ConvertingColor