

Converting Colors

CIELCh(80, 14.819, 56.189)

Have a look what the booklet for
CIELCh(80, 14.819, 56.189) contains.

CIELCh(80, 14.826, 54.867)	3
<i>Conversions</i>	4
<i>Details</i>	6
<i>Harmonies</i>	11
<i>Previews</i>	20
<i>Color Blindness Simulation</i>	23
<i>CSS Examples</i>	26

Color

CIELCh(80, 14.826, 54.867)

Conversions

Conversions Part 1

Format	Color
Hex	DFC0B0
RGB	223, 192, 176
RGB Percent	87%, 75%, 69%
CMY	0.1245, 0.2461, 0.3088
CMYK	0.00, 0.14, 0.21, 0.12
HSL	20°, 43%, 78%
HSV	20°, 21%, 88%
XYZ	57.2755, 56.6813, 49.1225
YIQ	199.4450, 23.6120, 1.5960

Conversions

Conversions Part 2

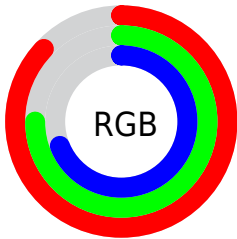
Format	Color
R _Y B	223, 200, 176
Decimal	14663856
CIE Lab	80.00, 8.53, 12.12
CIE LCh	80, 14.826, 54.867
Yxy	56.6813, 0.3512, 0.3476
Android (android.graphics.Color)	4292853936 (0xFFDFC0B0)
YUV	199.4450, -11.5584, 20.6577
Hunter-Lab	75.2870, 4.0439, 14.0159

Details

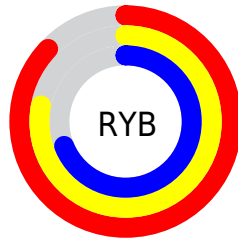
The CIELCh color **80, 14.826, 54.867** is a light color, and the websafe version is hex **FFCCCC**. A complement of this color would be **81, 13.269, 238.839**, and the grayscale version is **81, 0.010, 296.813**.

A 20% lighter version of the original color is **98, 8.505, 92.231**, and **60, 14.892, 57.156** is the 20% darker color. If you saturate the color by 10%, you get **76, 22.684, 54.172**, and if you desaturate by 10%, it is **84, 7.510, 55.619**.

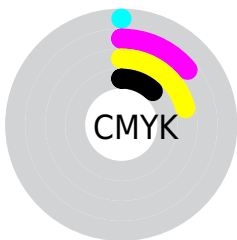
Distribution



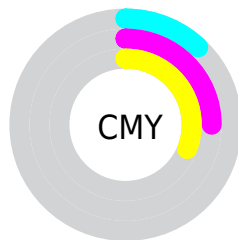
- Red (87%)
- Green (75%)
- Blue (69%)



- Red (87%)
- Yellow (78%)
- Blue (69%)



- Cyan (0%)
- Magenta (14%)
- Yellow (21%)
- Black (12%)



- Cyan (12%)
- Magenta (25%)
- Yellow (31%)

Brightness & Saturation Gradients

These gradients show how the CIELCh color 80, 14.826, 54.867 changes by changing the brightness by 10 percent. The first figure shows a shift by +10% for each color and the second figure -10%.

Similar to the brightness gradients but the following saturation gradients show a change of the CIELCh color 80, 14.826, 54.867 by changing the saturation by 10% instead.

80, 14.826, 54.867

80, 14.826, 54.867

100, 14.826,
54.867

70, 14.826, 54.867

60, 14.826, 54.867

50, 14.826, 54.867

40, 14.826, 54.867

30, 14.826, 54.867

20, 14.826, 54.867

10, 14.826, 54.867

0, 14.826, 54.867

80, 14.826, 54.867

80, 14.826, 54.867

76, 22.684, 54.172

84, 7.510, 55.619

72, 31.118, 53.534

88, 0.690, 55.742

68, 40.133, 52.980

93, 5.688, 237.432

64, 49.671, 52.508

97, 9.595, 210.780

61, 59.545, 52.069

98, 10.742,
198.789

58, 69.300, 51.522

55, 77.969, 50.524

53, 84.022, 49.077

Harmonies

Complementary

The Complementary color scheme is a pair of colors which are on the opposite of each other on the color wheel.



80, 14.826, 54.867



81, 13.269, 238.839

Rectangle

The Rectangle color scheme consists of four colors that form a rectangle on the color wheel.



80, 14.826, 54.867



80, 14.826, 104.867



80, 14.826, 234.867



80, 14.826, 284.867

Sweetspot

The Sweet Spot groups the original color and five complimentary colors.



80, 14.826, 54.878



97, 4.458, 55.963



77, 24.008, 337.199



51, 2.964, 55.922



0, 0.000, 0.000



53, 0.007, 296.813

Same Dimension

The Same Dimension uses a secret algorithm to generate beautiful new colors.



80, 14.826, 54.878



88, 19.903, 54.580



86, 20.637, 99.963



45, 3.850, 55.735



42, 69.925, 49.650



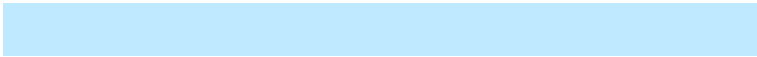
9, 20.529, 43.409

Inverse Universe

The Inverse Universe completely reimagines the original color for something new.



81, 13.269, 238.839



90, 17.382, 239.400



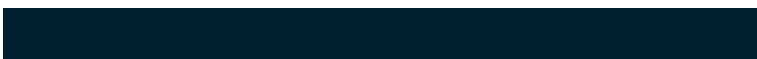
75, 21.239, 285.044



45, 3.678, 237.540



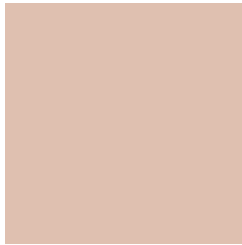
46, 39.652, 263.081



11, 14.865, 253.093

Previews

White Background



This preview shows how the CIELCh color 80, 14.826, 54.867 looks on a white background.

Color Contrast Check

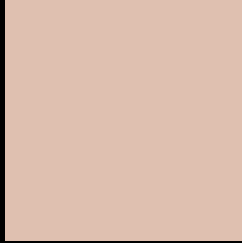
Large Text (above 18pt) WCAG AA × Fail

Any Text WCAG AA × Fail

Large Text (above 18pt) WCAG AAA × Fail

Any Text WCAG AAA × Fail

Black Background



This preview shows how the CIELCh color 80, 14.826, 54.867 looks on a black background.

Color Contrast Check

Large Text (above 18pt) WCAG AA ✓ Pass

Any Text WCAG AA ✓ Pass

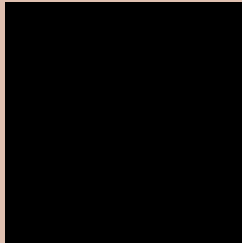
Large Text (above 18pt) WCAG AAA ✓ Pass

Any Text WCAG AAA ✓ Pass

If you want to check with other color combinations, try the [Color Contrast Checker](#).

CIELCh 80, 14.826, 54.867

Background



This preview shows how black text looks on a background with the CIELCh color 80, 14.826, 54.867.

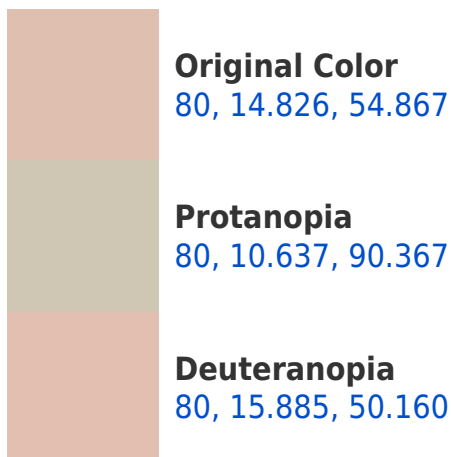



This preview shows how white text looks on a background with the CIELCh color 80, 14.826, 54.867.

Color Blindness Simulation

Color vision deficiency is a very complex topic, and I could not describe the different causes any better than Wikipedia does, so if you want to learn more, you should check out their [article about color blindness](#).

Dichromacy





Tritanopia
80, 16.510, 352.002

Trichromacy



Original Color
80, 14.826, 54.867

Protanomaly
80, 11.587, 74.881

Deuteranomaly
80, 15.539, 50.877

Tritanomaly
80, 13.696, 13.849

Monochromacy



Original Color
80, 14.826, 54.867

Achromatopsia
81, 0.010, 296.813

Achromatomaly
80, 5.190, 57.332

CSS Examples

Text

The CSS property to change the color of the text to CIELCh 80, 14.826, 54.867 is called "color". The color property can be set on classes, ids or directly on the HTML element.

This example shows how text in the color `rgb(223, 192, 176)` looks like.

```
.text, #text, p{  
    color:rgb(223, 192, 176)  
}
```

If you want to add a text shadow in that color use the text-shadow property, you can generate a text shadow directly with our [CSS Text Shadow Generator](#).

Here you see how black text with a 4 pixel rgb(223, 192, 176) colored shadow looks like.

```
.shadow{ text-shadow: 4px 4px 2px rgb(223, 192, 176) }
```

Border

The CSS property to change the border of an element to CIELCh 80, 14.826, 54.867 is called "border". The border property can be set on classes, ids or directly on the HTML element.

This example shows the color as border, it can be applied via the CSS property "border" or "border-color".

```
.border, #border, table{ border:4px solid rgb(223, 192, 176) }
```

If only the border color should be changed use the property `border-color`.

```
.border{ border-color:rgb(223, 192, 176) }
```

If you want to add a box shadow in that color use:

Here you see how a box with a 4 pixel `rgb(223, 192, 176)` colored shadow looks like.

```
.boxshadow{ -moz-box-shadow:4px 4px 4px 4px rgb(223, 192, 176); -webkit-box-shadow:4px 4px 4px 4px rgb(223, 192, 176); box-shadow:4px 4px 4px 4px rgb(223, 192, 176) }
```

Background

The CSS property to change the background color of an element to CIELCh 80, 14.826, 54.867 is called "background". The background property can be set on classes, ids or directly on the HTML element.

```
.background, #background, body{  
background: rgb(223, 192, 176) }
```

If only the background color should be changed can be used:

```
.background{ background-color: rgb(223,  
192, 176) }
```

This example shows the color as background, it is applied via the CSS property "background".

To optimize and compress your CSS code, you can use our [online CSS compressor and optimizer](#) based on csstidy. If you want to create a linear or radial gradient as background or border, check our [CSS Gradient Generator](#).

Hey! You found this booklet interesting? Support Converting Colors with the new Membership Option!

The pro membership hides all ads, plus gives you double the colors in the color bucket, and more awesome pro features!

[Learn more, Memberships starting at \\$2.50/m!](#)

**Follow me
on Twitter!**

@ConvertingColor