

Converting Colors

CIELCh(80, 14.906, 15.733)

Have a look what the booklet for
CIELCh(80, 14.906, 15.733) contains.

CIELCh(80, 14.848, 16.511)	3
<i>Conversions</i>	4
<i>Details</i>	6
<i>Harmonies</i>	11
<i>Previews</i>	20
<i>Color Blindness Simulation</i>	23
<i>CSS Examples</i>	26

Color

CIELCh(80, 14.848, 16.511)

Conversions

Conversions Part 1

Format	Color
Hex	E4BDBF
RGB	228, 189, 191
RGB Percent	89%, 74%, 75%
CMY	0.1057, 0.2586, 0.2508
CMYK	0.00, 0.17, 0.16, 0.11
HSL	357°, 42%, 82%
HSV	357°, 17%, 89%
XYZ	59.6276, 56.6813, 57.1153
YIQ	200.8890, 22.6020, 8.8900

Conversions

Conversions Part 2

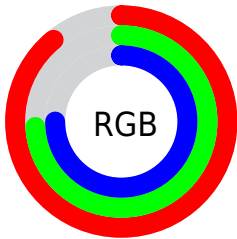
Format	Color
R _Y B	228, 189, 191
Decimal	14990783
CIE Lab	80.00, 14.24, 4.22
CIE LCh	80, 14.848, 16.511
Yxy	56.6813, 0.3438, 0.3268
Android (android.graphics.Color)	4293180863 (0xFFE4BDBF)
YUV	200.8890, -4.8753, 23.7763
Hunter-Lab	75.2870, 9.6206, 7.7214

Details

The CIELCh color **80, 14.848, 16.511** is a light color, and the websafe version is hex **FFCCCC**. A complement of this color would be **88, 13.423, 194.051**, and the grayscale version is **81, 0.010, 296.813**.

A 20% lighter version of the original color is **97, 3.691, 3.442**, and **60, 14.624, 16.534** is the 20% darker color. If you saturate the color by 10%, you get **74, 24.366, 17.640**, and if you desaturate by 10%, it is **86, 5.945, 15.578**.

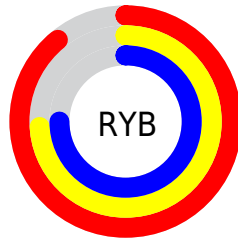
Distribution



Red (89%)

Green (74%)

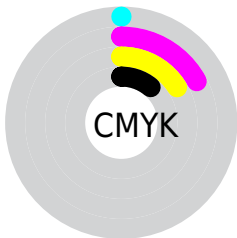
Blue (75%)



Red (89%)

Yellow (74%)

Blue (75%)

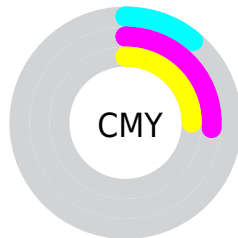


Cyan (0%)

Magenta (17%)

Yellow (16%)

Black (11%)



Cyan (11%)

Magenta (26%)

Yellow (25%)

Brightness & Saturation Gradients

These gradients show how the CIELCh color 80, 14.848, 16.511 changes by changing the brightness by 10 percent. The first figure shows a shift by +10% for each color and the second figure -10%.

Similar to the brightness gradients but the following saturation gradients show a change of the CIELCh color 80, 14.848, 16.511 by changing the saturation by 10% instead.

80, 14.848, 16.511

80, 14.848, 16.511

100, 14.848,
16.511

70, 14.848, 16.511

60, 14.848, 16.511

50, 14.848, 16.511

40, 14.848, 16.511

30, 14.848, 16.511

20, 14.848, 16.511

10, 14.848, 16.511

0, 14.848, 16.511

80, 14.848, 16.511

80, 14.848, 16.511

74, 24.366, 17.640

86, 5.945, 15.578

68, 34.452, 19.055

92, 2.337, 195.225

63, 44.970, 20.869

98, 9.167, 198.898

58, 55.684, 23.202

54, 66.267, 26.169

51, 76.335, 29.806

49, 85.403, 33.893

48, 92.518, 37.659

48, 94.082, 38.418

Harmonies

Complementary

The Complementary color scheme is a pair of colors which are on the opposite of each other on the color wheel.



80, 14.848, 16.511



88, 13.423, 194.051

Rectangle

The Rectangle color scheme consists of four colors that form a rectangle on the color wheel.



80, 14.848, 16.511



80, 14.848, 66.511



80, 14.848, 196.511



80, 14.848, 246.511

Sweetspot

The Sweet Spot groups the original color and five complimentary colors.



80, 14.846, 16.519



97, 4.550, 15.375



81, 24.477, 323.498



51, 3.112, 15.447



0, 0.000, 0.000



53, 0.007, 296.813

Same Dimension

The Same Dimension uses a secret algorithm to generate beautiful new colors.



80, 14.846, 16.519



86, 20.248, 16.942



84, 12.262, 65.943



45, 4.821, 15.794



37, 77.810, 37.900



6, 26.943, 19.648

Inverse Universe

The Inverse Universe completely reimagines the original color for something new.



80, 14.846, 16.519



86, 20.248, 16.942



83, 11.508, 250.121



45, 4.821, 15.794



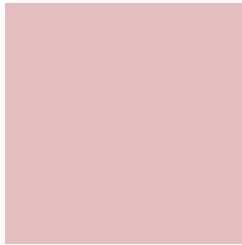
37, 77.810, 37.900



6, 26.943, 19.648

Previews

White Background



This preview shows how the CIELCh color 80, 14.848, 16.511 looks on a white background.

Color Contrast Check

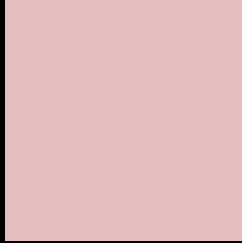
Large Text (above 18pt) WCAG AA × Fail

Any Text WCAG AA × Fail

Large Text (above 18pt) WCAG AAA × Fail

Any Text WCAG AAA × Fail

Black Background



This preview shows how the CIELCh color 80, 14.848, 16.511 looks on a black background.

Color Contrast Check

Large Text (above 18pt) WCAG AA ✓ Pass

Any Text WCAG AA ✓ Pass

Large Text (above 18pt) WCAG AAA ✓ Pass

Any Text WCAG AAA ✓ Pass

If you want to check with other color combinations, try the [Color Contrast Checker](#).

CIELCh 80, 14.848, 16.511

Background



This preview shows how black text looks on a background with the CIELCh color 80, 14.848, 16.511.



This preview shows how white text looks on a background with the CIELCh color 80, 14.848, 16.511.

Color Blindness Simulation

Color vision deficiency is a very complex topic, and I could not describe the different causes any better than Wikipedia does, so if you want to learn more, you should check out their [article about color blindness](#).

Dichromacy



Original Color

80, 14.848, 16.511

Protanopia

80, 2.117, 49.341

Deuteranopia

80, 10.984, 22.979



Tritanopia
80, 17.521, 353.916

Trichromacy



Original Color
80, 14.848, 16.511

Protanomaly
80, 6.371, 24.580

Deuteranomaly
80, 12.508, 20.364

Tritanomaly
80, 16.246, 1.758

Monochromacy



Original Color
80, 14.848, 16.511

Achromatopsia
81, 0.010, 296.813

Achromatomaly
81, 5.197, 19.705

CSS Examples

Text

The CSS property to change the color of the text to CIELCh 80, 14.848, 16.511 is called "color". The color property can be set on classes, ids or directly on the HTML element.

This example shows how text in the color `rgb(228, 189, 191)` looks like.

```
.text, #text, p{  
    color:rgb(228, 189, 191)  
}
```

If you want to add a text shadow in that color use the text-shadow property, you can generate a text shadow directly with our [CSS Text Shadow Generator](#).

Here you see how black text with a 4 pixel rgb(228, 189, 191) colored shadow looks like.

```
.shadow{ text-shadow: 4px 4px 2px rgb(228, 189, 191) }
```

Border

The CSS property to change the border of an element to CIELCh 80, 14.848, 16.511 is called "border". The border property can be set on classes, ids or directly on the HTML element.

This example shows the color as border, it can be applied via the CSS property "border" or "border-color".

```
.border, #border, table{ border:4px solid rgb(228, 189, 191) }
```

If only the border color should be changed use the property `border-color`.

```
.border{ border-color:rgb(228, 189, 191) }
```

If you want to add a box shadow in that color use:

Here you see how a box with a 4 pixel `rgb(228, 189, 191)` colored shadow looks like.

```
.boxshadow{ -moz-box-shadow:4px 4px 4px  
4px rgb(228, 189, 191); -webkit-box-  
shadow:4px 4px 4px 4px rgb(228, 189, 191);  
box-shadow:4px 4px 4px 4px rgb(228, 189,  
191) }
```

Background

The CSS property to change the background color of an element to CIELCh 80, 14.848, 16.511 is called "background". The background property can be set on classes, ids or directly on the HTML element.

```
.background, #background, body{  
background: rgb(228, 189, 191) }
```

If only the background color should be changed can be used:

```
.background{ background-color: rgb(228,  
189, 191) }
```

This example shows the color as background, it is applied via the CSS property "background".

To optimize and compress your CSS code, you can use our [online CSS compressor and optimizer](#) based on csstidy. If you want to create a linear or radial gradient as background or border, check our [CSS Gradient Generator](#).

Hey! You found this booklet interesting? Support Converting Colors with the new Membership Option!

The pro membership hides all ads, plus gives you double the colors in the color bucket, and more awesome pro features!

[Learn more, Memberships starting at \\$2.50/m!](#)

**Follow me
on Twitter!**

@ConvertingColor