

Converting Colors

CIELCh(80, 15.029, 54.006)

Have a look what the booklet for
CIELCh(80, 15.029, 54.006) contains.

CIELCh(80, 15.156, 54.023)	3
<i>Conversions</i>	4
<i>Details</i>	6
<i>Harmonies</i>	11
<i>Previews</i>	20
<i>Color Blindness Simulation</i>	23
<i>CSS Examples</i>	26

Color

CIELCh(80, 15.156, 54.023)

Conversions

Conversions Part 1

Format	Color
Hex	E0C0B0
RGB	224, 192, 176
RGB Percent	88%, 75%, 69%
CMY	0.1216, 0.2470, 0.3098
CMYK	0.00, 0.14, 0.21, 0.12
HSL	20°, 44%, 78%
HSV	20°, 21%, 88%
XYZ	57.4268, 56.6813, 48.9881
YIQ	199.7440, 24.2080, 1.8080

Conversions

Conversions Part 2

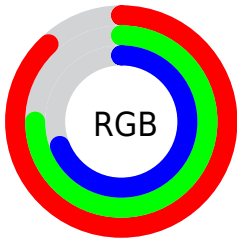
Format	Color
R _Y B	224, 200, 176
Decimal	14729392
CIE Lab	80.00, 8.90, 12.27
CIE LCh	80, 15.156, 54.023
Yxy	56.6813, 0.3521, 0.3475
Android (android.graphics.Color)	4292919472 (0xFFE0C0B0)
YUV	199.7440, -11.7058, 21.2725
Hunter-Lab	75.2870, 4.4027, 14.1218

Details

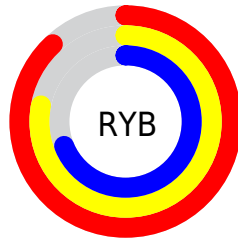
The CIELCh color **80, 15.156, 54.023** is a light color, and the websafe version is hex **FFCCCC**. A complement of this color would be **82, 13.506, 237.947**, and the grayscale version is **81, 0.010, 296.813**.

A 20% lighter version of the original color is **98, 8.505, 92.231**, and **60, 15.238, 56.205** is the 20% darker color. If you saturate the color by 10%, you get **76, 23.070, 53.365**, and if you desaturate by 10%, it is **84, 7.794, 54.743**.

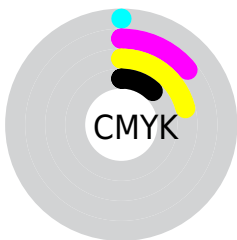
Distribution



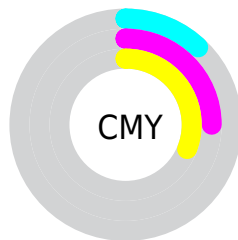
- Red (88%)
- Green (75%)
- Blue (69%)



- Red (88%)
- Yellow (78%)
- Blue (69%)



- Cyan (0%)
- Magenta (14%)
- Yellow (21%)
- Black (12%)



- Cyan (12%)
- Magenta (25%)
- Yellow (31%)

Brightness & Saturation Gradients

These gradients show how the CIELCh color 80, 15.156, 54.023 changes by changing the brightness by 10 percent. The first figure shows a shift by +10% for each color and the second figure -10%.

Similar to the brightness gradients but the following saturation gradients show a change of the CIELCh color 80, 15.156, 54.023 by changing the saturation by 10% instead.

80, 15.156, 54.023

80, 15.156, 54.023

100, 15.156,
54.023

70, 15.156, 54.023

60, 15.156, 54.023

50, 15.156, 54.023

40, 15.156, 54.023

30, 15.156, 54.023

20, 15.156, 54.023

10, 15.156, 54.023

0, 15.156, 54.023

80, 15.156, 54.023

80, 15.156, 54.023

76, 23.070, 53.365

84, 7.794, 54.743

72, 31.571, 52.769

89, 0.936, 55.030

68, 40.662, 52.264

93, 5.469, 236.505

64, 50.281, 51.846

97, 9.500, 209.058

61, 60.236, 51.467

98, 10.499,
198.806

58, 70.057, 50.978

55, 78.745, 50.024

53, 84.571, 48.688

Harmonies

Complementary

The Complementary color scheme is a pair of colors which are on the opposite of each other on the color wheel.



80, 15.156, 54.023



82, 13.506, 237.947

Rectangle

The Rectangle color scheme consists of four colors that form a rectangle on the color wheel.



80, 15.156, 54.023



80, 15.156, 104.023



80, 15.156, 234.023



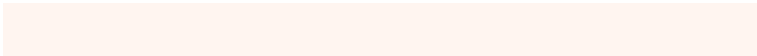
80, 15.156, 284.023

Sweetspot

The Sweet Spot groups the original color and five complimentary colors.



80, 15.156, 54.034



97, 4.457, 55.098



77, 24.500, 337.229



51, 2.964, 55.060



0, 0.000, 0.000



53, 0.007, 296.813

Same Dimension

The Same Dimension uses a secret algorithm to generate beautiful new colors.



80, 15.156, 54.034



88, 20.790, 53.707



86, 21.058, 99.920



45, 3.850, 54.881



42, 70.198, 49.260



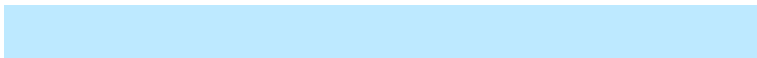
9, 20.604, 42.748

Inverse Universe

The Inverse Universe completely reimagines the original color for something new.



82, 13.506, 237.947



90, 17.998, 238.589



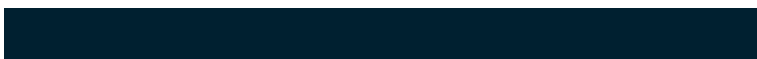
75, 21.685, 285.101



45, 3.674, 236.636



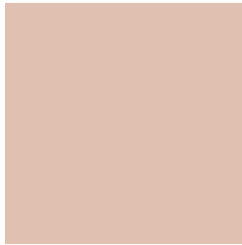
47, 39.149, 261.886



11, 14.741, 251.940

Previews

White Background



This preview shows how the CIELCh color 80, 15.156, 54.023 looks on a white background.

Color Contrast Check

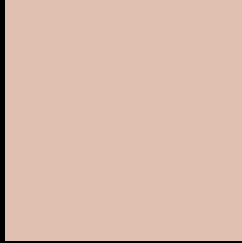
Large Text (above 18pt) WCAG AA × Fail

Any Text WCAG AA × Fail

Large Text (above 18pt) WCAG AAA × Fail

Any Text WCAG AAA × Fail

Black Background



This preview shows how the CIELCh color 80, 15.156, 54.023 looks on a black background.

Color Contrast Check

Large Text (above 18pt) WCAG AA ✓ Pass

Any Text WCAG AA ✓ Pass

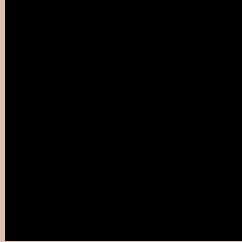
Large Text (above 18pt) WCAG AAA ✓ Pass

Any Text WCAG AAA ✓ Pass

If you want to check with other color combinations, try the [Color Contrast Checker](#).

CIELCh 80, 15.156, 54.023

Background



This preview shows how black text looks on a background with the CIELCh color 80, 15.156, 54.023.



This preview shows how white text looks on a background with the CIELCh color 80, 15.156, 54.023.

Color Blindness Simulation

Color vision deficiency is a very complex topic, and I could not describe the different causes any better than Wikipedia does, so if you want to learn more, you should check out their [article about color blindness](#).

Dichromacy



Original Color

80, 15.156, 54.023

Protanopia

80, 10.637, 90.367

Deuteranopia

80, 15.885, 50.160



Tritanopia
80, 16.510, 352.002

Trichromacy



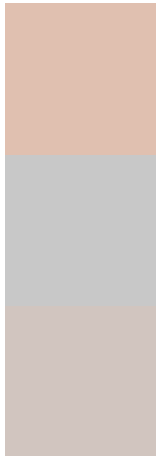
Original Color
80, 15.156, 54.023

Protanomaly
80, 11.587, 74.881

Deuteranomaly
80, 15.539, 50.877

Tritanomaly
80, 14.136, 11.940

Monochromacy



Original Color
80, 15.156, 54.023

Achromatopsia
81, 0.010, 296.813

Achromatomaly
80, 5.495, 54.929

CSS Examples

Text

The CSS property to change the color of the text to CIELCh 80, 15.156, 54.023 is called "color". The color property can be set on classes, ids or directly on the HTML element.

This example shows how text in the color `rgb(224, 192, 176)` looks like.

```
.text, #text, p{  
    color:rgb(224, 192, 176)  
}
```

If you want to add a text shadow in that color use the text-shadow property, you can generate a text shadow directly with our [CSS Text Shadow Generator](#).

Here you see how black text with a 4 pixel rgb(224, 192, 176) colored shadow looks like.

```
.shadow{ text-shadow: 4px 4px 2px rgb(224, 192, 176) }
```

Border

The CSS property to change the border of an element to CIELCh 80, 15.156, 54.023 is called "border". The border property can be set on classes, ids or directly on the HTML element.

This example shows the color as border, it can be applied via the CSS property "border" or "border-color".

```
.border, #border, table{ border:4px solid rgb(224, 192, 176) }
```

If only the border color should be changed use the property `border-color`.

```
.border{ border-color:rgb(224, 192, 176) }
```

If you want to add a box shadow in that color use:

Here you see how a box with a 4 pixel `rgb(224, 192, 176)` colored shadow looks like.

```
.boxshadow{ -moz-box-shadow:4px 4px 4px  
4px rgb(224, 192, 176); -webkit-box-  
shadow:4px 4px 4px 4px rgb(224, 192, 176);  
box-shadow:4px 4px 4px 4px rgb(224, 192,  
176) }
```

Background

The CSS property to change the background color of an element to CIELCh 80, 15.156, 54.023 is called "background". The background property can be set on classes, ids or directly on the HTML element.

```
.background, #background, body{  
background: rgb(224, 192, 176) }
```

If only the background color should be changed can be used:

```
.background{ background-color: rgb(224,  
192, 176) }
```

This example shows the color as background, it is applied via the CSS property "background".

To optimize and compress your CSS code, you can use our [online CSS compressor and optimizer](#) based on csstidy. If you want to create a linear or radial gradient as background or border, check our [CSS Gradient Generator](#).

Hey! You found this booklet interesting? Support Converting Colors with the new Membership Option!

The pro membership hides all ads, plus gives you double the colors in the color bucket, and more awesome pro features!

[Learn more, Memberships starting at \\$2.50/m!](#)

**Follow me
on Twitter!**

@ConvertingColor