

Converting Colors

CIELCh(80, 15.505, 66.492)

Have a look what the booklet for
CIELCh(80, 15.505, 66.492) contains.

CIELCh(80, 15.545, 68.212)	3
<i>Conversions</i>	4
<i>Details</i>	6
<i>Harmonies</i>	11
<i>Previews</i>	20
<i>Color Blindness Simulation</i>	23
<i>CSS Examples</i>	26

Color

CIELCh(80, 15.545, 68.212)

Conversions

Conversions Part 1

Format	Color
Hex	DCC2AC
RGB	220, 194, 172
RGB Percent	86%, 76%, 67%
CMY	0.1379, 0.2398, 0.3261
CMYK	0.00, 0.12, 0.22, 0.14
HSL	28°, 41%, 77%
HSV	28°, 22%, 86%
XYZ	56.1591, 56.6813, 46.9369
YIQ	199.2660, 22.5580, -1.3300

Conversions

Conversions Part 2

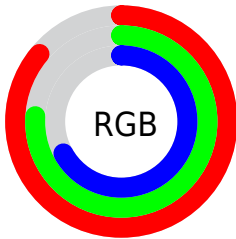
Format	Color
R _Y B	220, 213, 172
Decimal	14467756
CIE Lab	80.00, 5.77, 14.43
CIE LCh	80, 15.545, 68.212
Yxy	56.6813, 0.3515, 0.3548
Android (android.graphics.Color)	4292657836 (0xFFDCC2AC)
YUV	199.2660, -13.4421, 18.1837
Hunter-Lab	75.2870, 1.3969, 15.7371

Details

The CIELCh color $80, 15.545, 68.212$ is a light color, and the websafe version is hex `CCCCCC`. A complement of this color would be $79, 14.441, 253.868$, and the grayscale version is $80, 0.010, 296.813$.

A 20% lighter version of the original color is $98, 11.810, 100.410$, and $60, 15.216, 67.282$ is the 20% darker color. If you saturate the color by 10%, you get $77, 23.300, 67.064$, and if you desaturate by 10%, it is $83, 8.198, 69.365$.

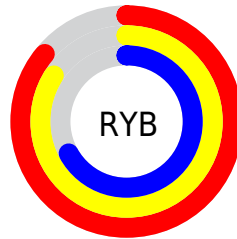
Distribution



Red (86%)

Green (76%)

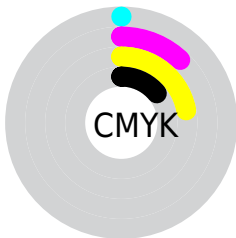
Blue (67%)



Red (86%)

Yellow (84%)

Blue (67%)

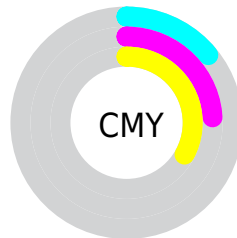


Cyan (0%)

Magenta (12%)

Yellow (22%)

Black (14%)



Cyan (14%)

Magenta (24%)

Yellow (33%)


Brightness & Saturation Gradients

These gradients show how the CIELCh color 80, 15.545, 68.212 changes by changing the brightness by 10 percent. The first figure shows a shift by +10% for each color and the second figure -10%.

Similar to the brightness gradients but the following saturation gradients show a change of the CIELCh color 80, 15.545, 68.212 by changing the saturation by 10% instead.

 80, 15.545, 68.212

 80, 15.545, 68.212

 100, 15.545,
68.212

 70, 15.545, 68.212

 60, 15.545, 68.212

 50, 15.545, 68.212

 40, 15.545, 68.212

 30, 15.545, 68.212

 20, 15.545, 68.212

 10, 15.545, 68.212

 0, 15.545, 68.212

 80, 15.545, 68.212

 80, 15.545, 68.212

77, 23.300, 67.064

83, 8.198, 69.365

73, 31.476, 65.910

87, 1.229, 70.227

70, 40.050, 64.760

91, 5.398, 251.798

67, 48.930, 63.597

94, 9.948, 243.633

64, 57.877, 62.359

97, 11.318,
202.951

61, 66.376, 60.898

98, 11.853,
198.714

59, 73.485, 58.913

57, 77.874, 56.832

Harmonies

Complementary

The Complementary color scheme is a pair of colors which are on the opposite of each other on the color wheel.



80, 15.545, 68.212



79, 14.441, 253.868

Rectangle

The Rectangle color scheme consists of four colors that form a rectangle on the color wheel.



80, 15.545, 68.212



80, 15.545, 118.212



80, 15.545, 248.212



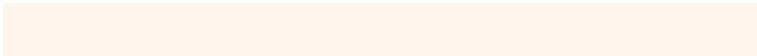
80, 15.545, 298.212

Sweetspot

The Sweet Spot groups the original color and five complimentary colors.



80, 15.545, 68.222



97, 5.401, 69.884



75, 22.719, 342.879



52, 3.515, 69.820



0, 0.000, 0.000



53, 0.007, 296.813

Same Dimension

The Same Dimension uses a secret algorithm to generate beautiful new colors.



80, 15.545, 68.222



90, 21.136, 67.714



86, 23.713, 105.895



44, 3.901, 69.631



45, 64.961, 57.488



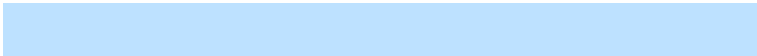
10, 18.408, 55.004

Inverse Universe

The Inverse Universe completely reimagines the original color for something new.



79, 14.441, 253.868



88, 19.308, 254.636



72, 24.820, 290.698



44, 3.792, 252.028



40, 49.502, 279.436



8, 16.954, 269.165

Previews

White Background



This preview shows how the CIELCh color 80, 15.545, 68.212 looks on a white background.

Color Contrast Check

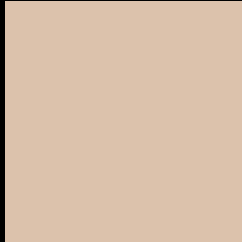
Large Text (above 18pt) WCAG AA × Fail

Any Text WCAG AA × Fail

Large Text (above 18pt) WCAG AAA × Fail

Any Text WCAG AAA × Fail

Black Background



This preview shows how the CIELCh color 80, 15.545, 68.212 looks on a black background.

Color Contrast Check

Large Text (above 18pt) WCAG AA ✓ Pass

Any Text WCAG AA ✓ Pass

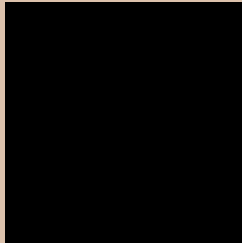
Large Text (above 18pt) WCAG AAA ✓ Pass

Any Text WCAG AAA ✓ Pass

If you want to check with other color combinations, try the [Color Contrast Checker](#).

CIELCh 80, 15.545, 68.212

Background



This preview shows how black text looks on a background with the CIELCh color 80, 15.545, 68.212.



This preview shows how white text looks on a background with the CIELCh color 80, 15.545, 68.212.

Color Blindness Simulation

Color vision deficiency is a very complex topic, and I could not describe the different causes any better than Wikipedia does, so if you want to learn more, you should check out their [article about color blindness](#).

Dichromacy



Original Color

80, 15.545, 68.212

Protanopia

80, 13.289, 92.114

Deuteranopia

80, 17.487, 55.211



Tritanopia
80, 15.203, 349.103

Trichromacy



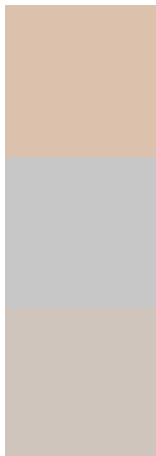
Original Color
80, 15.545, 68.212

Protanomaly
80, 13.705, 82.092

Deuteranomaly
80, 16.534, 59.771

Tritanomaly
80, 11.722, 17.722

Monochromacy



Original Color
80, 15.545, 68.212

Achromatopsia
80, 0.010, 296.813

Achromatomaly
80, 5.651, 68.122

CSS Examples

Text

The CSS property to change the color of the text to CIELCh 80, 15.545, 68.212 is called "color". The color property can be set on classes, ids or directly on the HTML element.

This example shows how text in the color `rgb(220, 194, 172)` looks like.

```
.text, #text, p{  
    color:rgb(220, 194, 172)  
}
```

If you want to add a text shadow in that color use the text-shadow property, you can generate a text shadow directly with our [CSS Text Shadow Generator](#).

Here you see how black text with a 4 pixel rgb(220, 194, 172) colored shadow looks like.

```
.shadow{ text-shadow: 4px 4px 2px rgb(220, 194, 172) }
```

Border

The CSS property to change the border of an element to CIELCh 80, 15.545, 68.212 is called "border". The border property can be set on classes, ids or directly on the HTML element.

This example shows the color as border, it can be applied via the CSS property "border" or "border-color".

```
.border, #border, table{ border:4px solid rgb(220, 194, 172) }
```

If only the border color should be changed use the property border-color.

```
.border{ border-color:rgb(220, 194, 172) }
```

If you want to add a box shadow in that color use:

Here you see how a box with a 4 pixel rgb(220, 194, 172) colored shadow looks like.

```
.boxshadow{ -moz-box-shadow:4px 4px 4px  
4px rgb(220, 194, 172); -webkit-box-  
shadow:4px 4px 4px 4px rgb(220, 194, 172);  
box-shadow:4px 4px 4px 4px rgb(220, 194,  
172) }
```

Background

The CSS property to change the background color of an element to CIELCh 80, 15.545, 68.212 is called "background". The background property can be set on classes, ids or directly on the HTML element.

```
.background, #background, body{  
background: rgb(220, 194, 172) }
```

If only the background color should be changed can be used:

```
.background{ background-color: rgb(220,  
194, 172) }
```

This example shows the color as background, it is applied via the CSS property "background".

To optimize and compress your CSS code, you can use our [online CSS compressor and optimizer](#) based on csstidy. If you want to create a linear or radial gradient as background or border, check our [CSS Gradient Generator](#).

Hey! You found this booklet interesting? Support Converting Colors with the new Membership Option!

The pro membership hides all ads, plus gives you double the colors in the color bucket, and more awesome pro features!

[Learn more, Memberships starting at \\$2.50/m!](#)

**Follow me
on Twitter!**

@ConvertingColor