

Converting Colors

CIELCh(80, 15.639, 73.855)

Have a look what the booklet for
CIELCh(80, 15.639, 73.855) contains.

CIELCh(80, 15.639, 73.855)	3
<i>Conversions</i>	4
<i>Details</i>	6
<i>Harmonies</i>	11
<i>Previews</i>	20
<i>Color Blindness Simulation</i>	23
<i>CSS Examples</i>	26

Color

CIELCh(80, 15.639, 73.855)

Conversions

Conversions Part 1

Format	Color
Hex	DAC3AB
RGB	218, 195, 171
RGB Percent	85%, 76%, 67%
CMY	0.1463, 0.2365, 0.3306
CMYK	0.00, 0.11, 0.22, 0.15
HSL	31°, 39%, 76%
HSV	31°, 22%, 85%
XYZ	55.5903, 56.6813, 46.3913
YIQ	199.1410, 21.4120, -2.5880

Conversions

Conversions Part 2

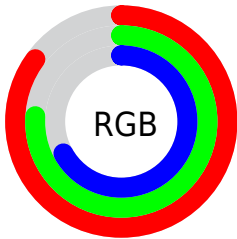
Format	Color
R _Y B	216, 218, 171
Decimal	14336939
CIE Lab	80.00, 4.35, 15.02
CIE LCh	80, 15.639, 73.855
Yxy	56.6813, 0.3504, 0.3572
Android (android.graphics.Color)	4292527019 (0xFFDAC3AB)
YUV	199.1410, -13.8735, 16.5393
Hunter-Lab	75.2870, 0.0485, 16.1668

Details

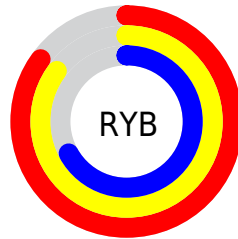
The CIELCh color $80, 15.639, 73.855$ is a light color, and the websafe version is hex `CCCCCC`. A complement of this color would be $77, 14.823, 259.751$, and the grayscale version is $80, 0.010, 296.813$.

A 20% lighter version of the original color is $99, 13.222, 104.426$, and $60, 15.542, 72.129$ is the 20% darker color. If you saturate the color by 10%, you get $77, 23.415, 72.595$, and if you desaturate by 10%, it is $83, 8.204, 75.103$.

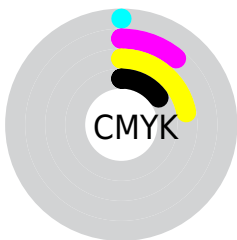
Distribution



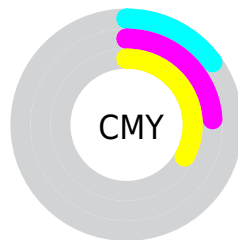
- Red (85%)
- Green (76%)
- Blue (67%)



- Red (85%)
- Yellow (85%)
- Blue (67%)



- Cyan (0%)
- Magenta (11%)
- Yellow (22%)
- Black (15%)



- Cyan (15%)
- Magenta (24%)
- Yellow (33%)


Brightness & Saturation Gradients

These gradients show how the CIELCh color 80, 15.639, 73.855 changes by changing the brightness by 10 percent. The first figure shows a shift by +10% for each color and the second figure -10%.

Similar to the brightness gradients but the following saturation gradients show a change of the CIELCh color 80, 15.639, 73.855 by changing the saturation by 10% instead.

 80, 15.639, 73.855

 80, 15.639, 73.855

 100, 15.639,
73.855

 70, 15.639, 73.855

 60, 15.639, 73.855

 50, 15.639, 73.855

 40, 15.639, 73.855

 30, 15.639, 73.855

 20, 15.639, 73.855

 10, 15.639, 73.855

 0, 15.639, 73.855

 80, 15.639, 73.855

 80, 15.639, 73.855

77, 23.415, 72.595

83, 8.204, 75.103

74, 31.533, 71.307

86, 1.090, 76.033

71, 39.956, 69.999

90, 5.730, 257.655

68, 48.572, 68.652

93, 11.123,
254.590

65, 57.121, 67.206

96, 10.709,
218.647

63, 65.078, 65.525

60, 71.541, 63.342

97, 12.549,
198.668

58, 75.478, 61.045

Harmonies

Complementary

The Complementary color scheme is a pair of colors which are on the opposite of each other on the color wheel.



80, 15.639, 73.855



77, 14.823, 259.751

Rectangle

The Rectangle color scheme consists of four colors that form a rectangle on the color wheel.



80, 15.639, 73.855



80, 15.639, 123.855



80, 15.639, 253.855



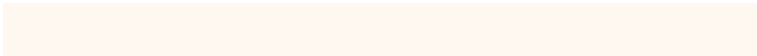
80, 15.639, 303.855

Sweetspot

The Sweet Spot groups the original color and five complimentary colors.



80, 15.639, 73.865



98, 4.770, 75.745



75, 21.575, 345.555



52, 3.169, 75.673



0, 0.000, 0.000



53, 0.007, 296.813

Same Dimension

The Same Dimension uses a secret algorithm to generate beautiful new colors.



80, 15.639, 73.865



91, 21.649, 73.277



86, 24.412, 108.089



44, 4.025, 75.359



47, 63.510, 61.674



11, 18.359, 61.039

Inverse Universe

The Inverse Universe completely reimagines the original color for something new.



77, 14.823, 259.751



87, 20.253, 260.590



71, 25.670, 292.652



44, 3.944, 257.871



37, 55.003, 284.886



7, 18.423, 274.849

Previews

White Background



This preview shows how the CIELCh color 80, 15.639, 73.855 looks on a white background.

Color Contrast Check

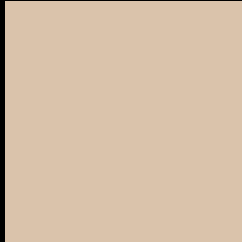
Large Text (above 18pt) WCAG AA × Fail

Any Text WCAG AA × Fail

Large Text (above 18pt) WCAG AAA × Fail

Any Text WCAG AAA × Fail

Black Background



This preview shows how the CIELCh color 80, 15.639, 73.855 looks on a black background.

Color Contrast Check

Large Text (above 18pt) WCAG AA ✓ Pass

Any Text WCAG AA ✓ Pass

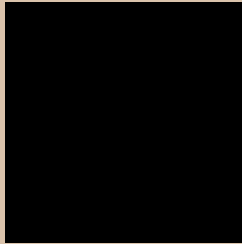
Large Text (above 18pt) WCAG AAA ✓ Pass

Any Text WCAG AAA ✓ Pass

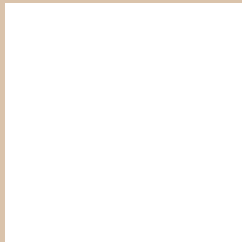
If you want to check with other color combinations, try the [Color Contrast Checker](#).

CIELCh 80, 15.639, 73.855

Background



This preview shows how black text looks on a background with the CIELCh color 80, 15.639, 73.855.



This preview shows how white text looks on a background with the CIELCh color 80, 15.639, 73.855.

Color Blindness Simulation

Color vision deficiency is a very complex topic, and I could not describe the different causes any better than Wikipedia does, so if you want to learn more, you should check out their [article about color blindness](#).

Dichromacy





Tritanopia
80, 14.252, 346.614

Trichromacy



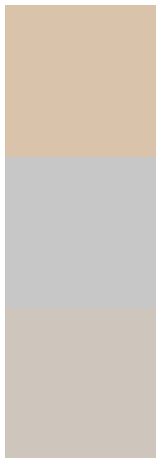
Original Color
80, 15.639, 73.855

Protanomaly
80, 14.490, 85.217

Deuteranomaly
80, 16.903, 61.051

Tritanomaly
80, 10.557, 17.332

Monochromacy



Original Color
80, 15.639, 73.855

Achromatopsia
80, 0.010, 296.813

Achromatomaly
80, 5.408, 71.127

CSS Examples

Text

The CSS property to change the color of the text to CIELCh 80, 15.639, 73.855 is called "color". The color property can be set on classes, ids or directly on the HTML element.

This example shows how text in the color `rgb(218, 195, 171)` looks like.

```
.text, #text, p{  
    color:rgb(218, 195, 171)  
}
```

If you want to add a text shadow in that color use the text-shadow property, you can generate a text shadow directly with our [CSS Text Shadow Generator](#).

Here you see how black text with a 4 pixel rgb(218, 195, 171) colored shadow looks like.

```
.shadow{ text-shadow: 4px 4px 2px rgb(218, 195, 171) }
```

Border

The CSS property to change the border of an element to CIELCh 80, 15.639, 73.855 is called "border". The border property can be set on classes, ids or directly on the HTML element.

This example shows the color as border, it can be applied via the CSS property "border" or "border-color".

```
.border, #border, table{ border:4px solid rgb(218, 195, 171) }
```

If only the border color should be changed use the property `border-color`.

```
.border{ border-color:rgb(218, 195, 171) }
```

If you want to add a box shadow in that color use:

Here you see how a box with a 4 pixel `rgb(218, 195, 171)` colored shadow looks like.

```
.boxshadow{ -moz-box-shadow:4px 4px 4px 4px rgb(218, 195, 171); -webkit-box-shadow:4px 4px 4px 4px rgb(218, 195, 171); box-shadow:4px 4px 4px 4px rgb(218, 195, 171) }
```

Background

The CSS property to change the background color of an element to CIELCh 80, 15.639, 73.855 is called "background". The background property can be set on classes, ids or directly on the HTML element.

```
.background, #background, body{  
background: rgb(218, 195, 171) }
```

If only the background color should be changed can be used:

```
.background{ background-color: rgb(218,  
195, 171) }
```

This example shows the color as background, it is applied via the CSS property "background".

To optimize and compress your CSS code, you can use our [online CSS compressor and optimizer](#) based on csstidy. If you want to create a linear or radial gradient as background or border, check our [CSS Gradient Generator](#).

Hey! You found this booklet interesting? Support Converting Colors with the new Membership Option!

The pro membership hides all ads, plus gives you double the colors in the color bucket, and more awesome pro features!

[Learn more, Memberships starting at \\$2.50/m!](#)

**Follow me
on Twitter!**

@ConvertingColor