

Converting Colors

CIELCh(80, 16.411, 33.668)

Have a look what the booklet for
CIELCh(80, 16.411, 33.668) contains.

CIELCh(80, 16.332, 33.638)	3
<i>Conversions</i>	4
<i>Details</i>	6
<i>Harmonies</i>	11
<i>Previews</i>	20
<i>Color Blindness Simulation</i>	23
<i>CSS Examples</i>	26

Color

CIELCh(80, 16.332, 33.638)

Conversions

Conversions Part 1

Format	Color
Hex	E6BDB6
RGB	230, 189, 182
RGB Percent	90%, 74%, 71%
CMY	0.0975, 0.2583, 0.2858
CMYK	0.00, 0.18, 0.21, 0.10
HSL	9°, 49%, 81%
HSV	9°, 21%, 90%
XYZ	59.3612, 56.6813, 52.1393
YIQ	200.4610, 26.6830, 6.5150

Conversions

Conversions Part 2

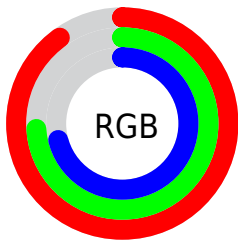
Format	Color
R _Y B	230, 190, 182
Decimal	15121846
CIE Lab	80.00, 13.60, 9.05
CIE LCh	80, 16.332, 33.638
Yxy	56.6813, 0.3530, 0.3370
Android (android.graphics.Color)	4293311926 (0xFFE6BDB6)
YUV	200.4610, -9.1013, 25.9057
Hunter-Lab	75.2870, 8.9889, 11.6401

Details

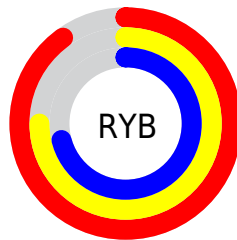
The CIELCh color **80, 16.332, 33.638** is a light color, and the websafe version is hex **FFCCCC**. A complement of this color would be **86, 14.160, 213.653**, and the grayscale version is **81, 0.010, 296.813**.

A 20% lighter version of the original color is **97, 5.034, 64.504**, and **60, 16.326, 34.727** is the 20% darker color. If you saturate the color by 10%, you get **75, 25.198, 34.027**, and if you desaturate by 10%, it is **85, 8.152, 33.409**.

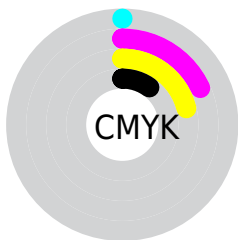
Distribution



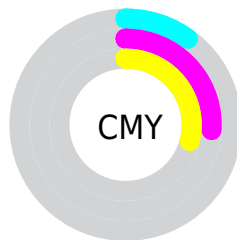
- Red (90%)
- Green (74%)
- Blue (71%)



- Red (90%)
- Yellow (75%)
- Blue (71%)



- Cyan (0%)
- Magenta (18%)
- Yellow (21%)
- Black (10%)



- Cyan (10%)
- Magenta (26%)
- Yellow (29%)


Brightness & Saturation Gradients

These gradients show how the CIELCh color 80, 16.332, 33.638 changes by changing the brightness by 10 percent. The first figure shows a shift by +10% for each color and the second figure -10%.

Similar to the brightness gradients but the following saturation gradients show a change of the CIELCh color 80, 16.332, 33.638 by changing the saturation by 10% instead.

 80, 16.332, 33.638

 80, 16.332, 33.638

 100, 16.332,
33.638

 70, 16.332, 33.638

 60, 16.332, 33.638

 50, 16.332, 33.638

 40, 16.332, 33.638

 30, 16.332, 33.638

 20, 16.332, 33.638

 10, 16.332, 33.638

 0, 16.332, 33.638

 80, 16.332, 33.638

 80, 16.332, 33.638

75, 25.198, 34.027

85, 8.152, 33.409

70, 34.771, 34.615

91, 0.618, 32.418

65, 45.019, 35.467

96, 6.330, 213.530

61, 55.835, 36.629

98, 8.475, 198.948

57, 66.978, 38.101

54, 77.948, 39.758

51, 87.637, 41.159

49, 94.078, 41.803

Harmonies

Complementary

The Complementary color scheme is a pair of colors which are on the opposite of each other on the color wheel.



80, 16.332, 33.638



86, 14.160, 213.653

Rectangle

The Rectangle color scheme consists of four colors that form a rectangle on the color wheel.



80, 16.332, 33.638



80, 16.332, 83.638



80, 16.332, 213.638



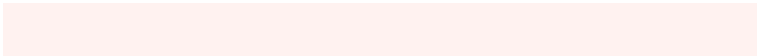
80, 16.332, 263.638

Sweetspot

The Sweet Spot groups the original color and five complimentary colors.



80, 16.331, 33.647



96, 4.797, 33.297



79, 28.025, 329.547



51, 3.191, 33.316



0, 0.000, 0.000



53, 0.007, 296.813

Same Dimension

The Same Dimension uses a secret algorithm to generate beautiful new colors.



80, 16.331, 33.647



85, 21.657, 33.788



86, 17.296, 85.667



45, 4.229, 33.380



38, 77.438, 42.112



8, 24.479, 29.834

Inverse Universe

The Inverse Universe completely reimagines the original color for something new.



86, 14.160, 213.653



93, 18.172, 213.760



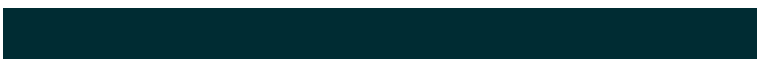
80, 17.067, 271.428



47, 3.979, 213.527



58, 33.381, 223.705



16, 14.123, 218.943

Previews

White Background



This preview shows how the CIELCh color 80, 16.332, 33.638 looks on a white background.

Color Contrast Check

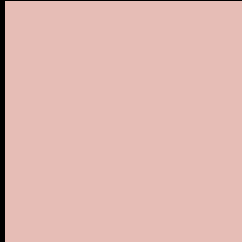
Large Text (above 18pt) WCAG AA × Fail

Any Text WCAG AA × Fail

Large Text (above 18pt) WCAG AAA × Fail

Any Text WCAG AAA × Fail

Black Background



This preview shows how the CIE LCh color 80, 16.332, 33.638 looks on a black background.

Color Contrast Check

Large Text (above 18pt) WCAG AA ✓ Pass

Any Text WCAG AA ✓ Pass

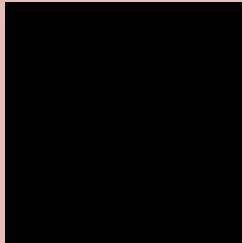
Large Text (above 18pt) WCAG AAA ✓ Pass

Any Text WCAG AAA ✓ Pass

If you want to check with other color combinations, try the [Color Contrast Checker](#).

CIELCh 80, 16.332, 33.638

Background



This preview shows how black text looks on a background with the CIELCh color 80, 16.332, 33.638.

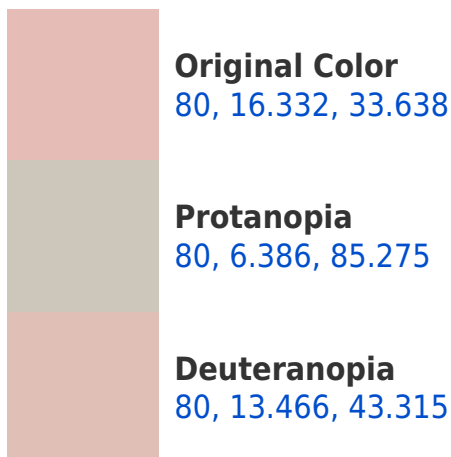


This preview shows how white text looks on a background with the CIELCh color 80, 16.332, 33.638.

Color Blindness Simulation

Color vision deficiency is a very complex topic, and I could not describe the different causes any better than Wikipedia does, so if you want to learn more, you should check out their [article about color blindness](#).

Dichromacy





Tritanopia
80, 18.895, 356.173

Trichromacy



Original Color
80, 16.332, 33.638

Protanomaly
80, 8.971, 55.951

Deuteranomaly
80, 14.369, 39.649

Tritanomaly
80, 17.028, 8.277

Monochromacy



Original Color
80, 16.332, 33.638

Achromatopsia
81, 0.010, 296.813

Achromatomaly
81, 5.817, 35.557

CSS Examples

Text

The CSS property to change the color of the text to CIELCh 80, 16.332, 33.638 is called "color". The color property can be set on classes, ids or directly on the HTML element.

This example shows how text in the color `rgb(230, 189, 182)` looks like.

```
.text, #text, p{  
    color:rgb(230, 189, 182)  
}
```

If you want to add a text shadow in that color use the text-shadow property, you can generate a text shadow directly with our [CSS Text Shadow Generator](#).

Here you see how black text with a 4 pixel rgb(230, 189, 182) colored shadow looks like.

```
.shadow{ text-shadow: 4px 4px 2px rgb(230, 189, 182) }
```

Border

The CSS property to change the border of an element to CIELCh 80, 16.332, 33.638 is called "border". The border property can be set on classes, ids or directly on the HTML element.

This example shows the color as border, it can be applied via the CSS property "border" or "border-color".

```
.border, #border, table{ border:4px solid rgb(230, 189, 182) }
```

If only the border color should be changed use the property `border-color`.

```
.border{ border-color:rgb(230, 189, 182) }
```

If you want to add a box shadow in that color use:

Here you see how a box with a 4 pixel `rgb(230, 189, 182)` colored shadow looks like.

```
.boxshadow{ -moz-box-shadow:4px 4px 4px  
4px rgb(230, 189, 182); -webkit-box-  
shadow:4px 4px 4px 4px rgb(230, 189, 182);  
box-shadow:4px 4px 4px 4px rgb(230, 189,  
182) }
```

Background

The CSS property to change the background color of an element to CIELCh 80, 16.332, 33.638 is called "background". The background property can be set on classes, ids or directly on the HTML element.

```
.background, #background, body{  
background: rgb(230, 189, 182) }
```

If only the background color should be changed can be used:

```
.background{ background-color: rgb(230,  
189, 182) }
```

This example shows the color as background, it is applied via the CSS property "background".

To optimize and compress your CSS code, you can use our [online CSS compressor and optimizer](#) based on csstidy. If you want to create a linear or radial gradient as background or border, check our [CSS Gradient Generator](#).

Hey! You found this booklet interesting? Support Converting Colors with the new Membership Option!

The pro membership hides all ads, plus gives you double the colors in the color bucket, and more awesome pro features!

[Learn more, Memberships starting at \\$2.50/m!](#)

**Follow me
on Twitter!**

@ConvertingColor