

Converting Colors

CIELCh(80, 16.473, 64.740)

Have a look what the booklet for
CIELCh(80, 16.473, 64.740) contains.

CIELCh(80, 16.387, 65.089)	3
<i>Conversions</i>	4
<i>Details</i>	6
<i>Harmonies</i>	11
<i>Previews</i>	20
<i>Color Blindness Simulation</i>	23
<i>CSS Examples</i>	26

Color

CIELCh(80, 16.387, 65.089)

Conversions

Conversions Part 1

Format	Color
Hex	DEC1AB
RGB	222, 193, 171
RGB Percent	87%, 76%, 67%
CMY	0.1290, 0.2427, 0.3290
CMYK	0.00, 0.13, 0.23, 0.13
HSL	26°, 44%, 77%
HSV	26°, 23%, 87%
XYZ	56.6151, 56.6813, 46.5392
YIQ	199.1630, 24.3460, -0.6940

Conversions

Conversions Part 2

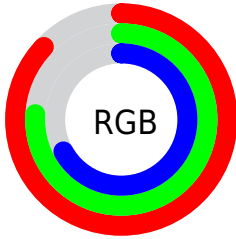
Format	Color
RYB	222, 210, 171
Decimal	14598571
CIELab	80.00, 6.90, 14.86
CIElCh	80, 16.387, 65.089
Yxy	56.6813, 0.3542, 0.3546
Android (android.graphics.Color)	4292788651 (0xFFDEC1AB)
YUV	199.1630, -13.8844, 20.0280
Hunter-Lab	75.2870, 2.4780, 16.0503

Details

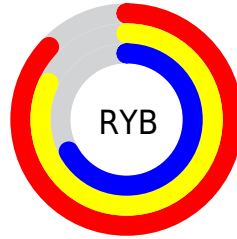
The CIELCh color $80, 16.387, 65.089$ is a light color, and the websafe version is hex `FFCCCC`. A complement of this color would be $79, 14.996, 250.809$, and the grayscale version is $80, 0.010, 296.813$.

A 20% lighter version of the original color is $98, 11.879, 98.658$, and $60, 16.243, 66.268$ is the 20% darker color. If you saturate the color by 10%, you get $76, 24.238, 64.022$, and if you desaturate by 10%, it is $84, 8.983, 66.175$.

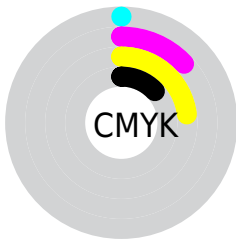
Distribution



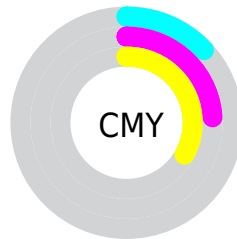
- Red (87%)
- Green (76%)
- Blue (67%)



- Red (87%)
- Yellow (82%)
- Blue (67%)



- Cyan (0%)
- Magenta (13%)
- Yellow (23%)
- Black (13%)



- Cyan (13%)
- Magenta (24%)
- Yellow (33%)


Brightness & Saturation Gradients

These gradients show how the CIELCh color 80, 16.387, 65.089 changes by changing the brightness by 10 percent. The first figure shows a shift by +10% for each color and the second figure -10%.

Similar to the brightness gradients but the following saturation gradients show a change of the CIELCh color 80, 16.387, 65.089 by changing the saturation by 10% instead.

 80, 16.387, 65.089

 80, 16.387, 65.089

 100, 16.387,
65.089

 70, 16.387, 65.089

 60, 16.387, 65.089

 50, 16.387, 65.089

 40, 16.387, 65.089

 30, 16.387, 65.089

 20, 16.387, 65.089

 10, 16.387, 65.089

 0, 16.387, 65.089

 80, 16.387, 65.089

 80, 16.387, 65.089

76, 24.238, 64.022

84, 8.983, 66.175

73, 32.553, 62.963

87, 1.991, 67.100

70, 41.311, 61.924

91, 4.627, 248.521

66, 50.414, 60.885

95, 9.212, 238.569

63, 59.611, 59.778

98, 11.115,
198.764

60, 68.350, 58.437

58, 75.610, 56.522

56, 79.586, 54.820

Harmonies

Complementary

The Complementary color scheme is a pair of colors which are on the opposite of each other on the color wheel.



80, 16.387, 65.089



79, 14.996, 250.809

Rectangle

The Rectangle color scheme consists of four colors that form a rectangle on the color wheel.



80, 16.387, 65.089



80, 16.387, 115.089



80, 16.387, 245.089



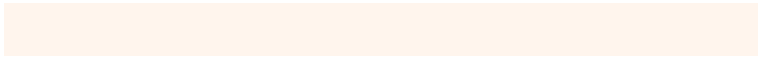
80, 16.387, 295.089

Sweetspot

The Sweet Spot groups the original color and five complimentary colors.



80, 16.387, 65.099



97, 5.332, 66.783



75, 24.653, 341.281



51, 3.471, 66.724



0, 0.000, 0.000



53, 0.007, 296.813

Same Dimension

The Same Dimension uses a secret algorithm to generate beautiful new colors.



80, 16.387, 65.099



88, 22.703, 64.532



86, 24.340, 104.200



45, 3.927, 66.543



45, 66.569, 55.449



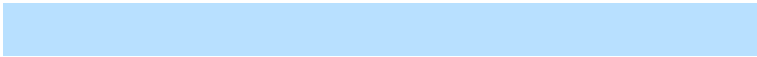
10, 19.810, 52.638

Inverse Universe

The Inverse Universe completely reimagines the original color for something new.



79, 14.996, 250.809



87, 20.302, 251.729



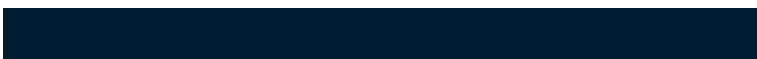
73, 25.437, 289.420



45, 3.801, 248.851



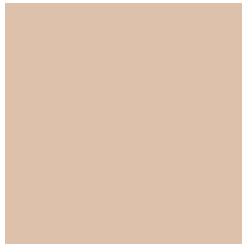
42, 47.407, 276.282



9, 16.932, 266.441

Previews

White Background



This preview shows how the CIELCh color 80, 16.387, 65.089 looks on a white background.

Color Contrast Check

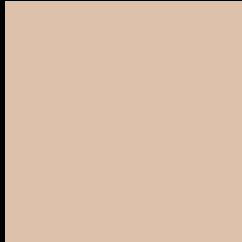
Large Text (above 18pt) WCAG AA × Fail

Any Text WCAG AA × Fail

Large Text (above 18pt) WCAG AAA × Fail

Any Text WCAG AAA × Fail

Black Background



This preview shows how the CIELCh color 80, 16.387, 65.089 looks on a black background.

Color Contrast Check

Large Text (above 18pt) WCAG AA ✓ Pass

Any Text WCAG AA ✓ Pass

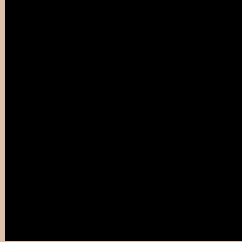
Large Text (above 18pt) WCAG AAA ✓ Pass

Any Text WCAG AAA ✓ Pass

If you want to check with other color combinations, try the [Color Contrast Checker](#).

CIELCh 80, 16.387, 65.089

Background



This preview shows how black text looks on a background with the CIELCh color 80, 16.387, 65.089.

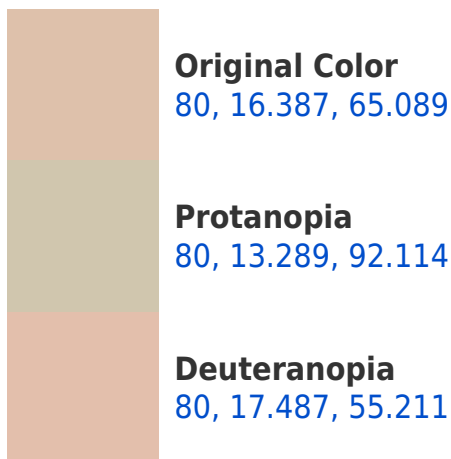


This preview shows how white text looks on a background with the CIELCh color 80, 16.387, 65.089.

Color Blindness Simulation

Color vision deficiency is a very complex topic, and I could not describe the different causes any better than Wikipedia does, so if you want to learn more, you should check out their [article about color blindness](#).

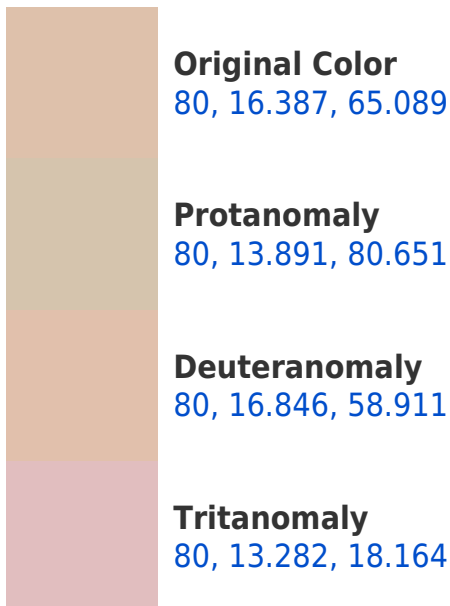
Dichromacy





Tritanopia
80, 16.183, 351.319

Trichromacy



Monochromacy



CSS Examples

Text

The CSS property to change the color of the text to CIELCh 80, 16.387, 65.089 is called "color". The color property can be set on classes, ids or directly on the HTML element.

This example shows how text in the color `rgb(222, 193, 171)` looks like.

```
.text, #text, p{  
    color:rgb(222, 193, 171)  
}
```

If you want to add a text shadow in that color use the text-shadow property, you can generate a text shadow directly with our [CSS Text Shadow Generator](#).

Here you see how black text with a 4 pixel rgb(222, 193, 171) colored shadow looks like.

```
.shadow{ text-shadow: 4px 4px 2px rgb(222, 193, 171) }
```

Border

The CSS property to change the border of an element to CIELCh 80, 16.387, 65.089 is called "border". The border property can be set on classes, ids or directly on the HTML element.

This example shows the color as border, it can be applied via the CSS property "border" or "border-color".

```
.border, #border, table{ border:4px solid rgb(222, 193, 171) }
```

If only the border color should be changed use the property `border-color`.

```
.border{ border-color:rgb(222, 193, 171) }
```

If you want to add a box shadow in that color use:

Here you see how a box with a 4 pixel `rgb(222, 193, 171)` colored shadow looks like.

```
.boxshadow{ -moz-box-shadow:4px 4px 4px 4px rgb(222, 193, 171); -webkit-box-shadow:4px 4px 4px 4px rgb(222, 193, 171); box-shadow:4px 4px 4px 4px rgb(222, 193, 171) }
```

Background

The CSS property to change the background color of an element to CIELCh 80, 16.387, 65.089 is called "background". The background property can be set on classes, ids or directly on the HTML element.

```
.background, #background, body{  
background: rgb(222, 193, 171) }
```

If only the background color should be changed can be used:

```
.background{ background-color: rgb(222,  
193, 171) }
```

This example shows the color as background, it is applied via the CSS property "background".

To optimize and compress your CSS code, you can use our [online CSS compressor and optimizer](#) based on csstidy. If you want to create a linear or radial gradient as background or border, check our [CSS Gradient Generator](#).

Hey! You found this booklet interesting? Support Converting Colors with the new Membership Option!

The pro membership hides all ads, plus gives you double the colors in the color bucket, and more awesome pro features!

[Learn more, Memberships starting at \\$2.50/m!](#)

**Follow me
on Twitter!**

@ConvertingColor