

# Converting Colors

CIELCh(80, 16.843, 54.595)

Have a look what the booklet for  
CIELCh(80, 16.843, 54.595) contains.

<b>CIELCh(80, 16.823, 54.602)</b> .....	3
<i><b>Conversions</b></i> .....	4
<i><b>Details</b></i> .....	6
<i><b>Harmonies</b></i> .....	11
<i><b>Previews</b></i> .....	20
<i><b>Color Blindness Simulation</b></i> .....	23
<i><b>CSS Examples</b></i> .....	26

# Color

**CIELCh(80, 16.823, 54.602)**

# Conversions

## Conversions Part 1

Format	Color
Hex	E2BFAD
RGB	226, 191, 173
RGB Percent	89%, 75%, 68%
CMY	0.1122, 0.2495, 0.3202
CMYK	0.00, 0.15, 0.23, 0.11
HSL	20°, 48%, 78%
HSV	20°, 23%, 89%
XYZ	57.7704, 56.6813, 47.6124
YIQ	199.4130, 26.6380, 1.8220

# Conversions

## Conversions Part 2

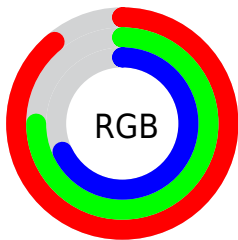
Format	Color
R <sub>Y</sub> B	226, 200, 173
Decimal	14860205
CIE Lab	80.00, 9.74, 13.71
CIE LCh	80, 16.823, 54.602
Yxy	56.6813, 0.3565, 0.3497
Android (android.graphics.Color)	4293050285 (0xFFE2BFAD)
YUV	199.4130, -13.0216, 23.3168
Hunter-Lab	75.2870, 5.2172, 15.2052

# Details

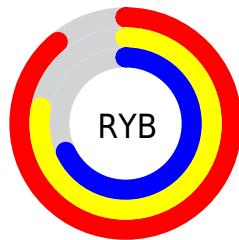
The CIELCh color  $80, 16.823, 54.602$  is a light color, and the websafe version is hex `FFCCCC`. A complement of this color would be  $82, 14.842, 239.048$ , and the grayscale version is  $81, 0.010, 296.813$ .

A 20% lighter version of the original color is  $97, 10.082, 92.646$ , and  $60, 16.686, 55.082$  is the 20% darker color. If you saturate the color by 10%, you get  $76, 24.908, 53.923$ , and if you desaturate by 10%, it is  $84, 9.297, 55.347$ .

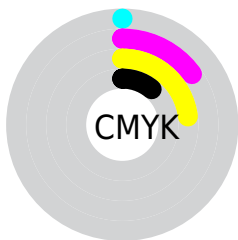
# Distribution



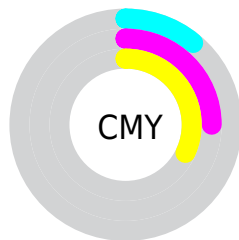
- Red (89%)
- Green (75%)
- Blue (68%)



- Red (89%)
- Yellow (78%)
- Blue (68%)



- Cyan (0%)
- Magenta (15%)
- Yellow (23%)
- Black (11%)



- Cyan (11%)
- Magenta (25%)
- Yellow (32%)

# Brightness & Saturation Gradients


These gradients show how the CIELCh color 80, 16.823, 54.602 changes by changing the brightness by 10 percent. The first figure shows a shift by +10% for each color and the second figure -10%.

Similar to the brightness gradients but the following saturation gradients show a change of the CIELCh color 80, 16.823, 54.602 by changing the saturation by 10% instead.



 80, 16.823, 54.602

 80, 16.823, 54.602

 100, 16.823,  
54.602

 70, 16.823, 54.602

 60, 16.823, 54.602

 50, 16.823, 54.602

 40, 16.823, 54.602

 30, 16.823, 54.602

 20, 16.823, 54.602

 10, 16.823, 54.602

 0, 16.823, 54.602

 80, 16.823, 54.602

 80, 16.823, 54.602

76, 24.908, 53.923

84, 9.297, 55.347

72, 33.583, 53.309

89, 2.285, 55.975

68, 42.840, 52.781

93, 4.266, 237.163

64, 52.597, 52.329

97, 8.596, 212.202

61, 62.616, 51.890

98, 9.719, 198.860

58, 72.338, 51.282

55, 80.622, 50.099

54, 84.968, 49.003

# Harmonies

# Complementary

The Complementary color scheme is a pair of colors which are on the opposite of each other on the color wheel.



80, 16.823, 54.602



82, 14.842, 239.048

# Rectangle

The Rectangle color scheme consists of four colors that form a rectangle on the color wheel.



80, 16.823, 54.602



80, 16.823, 104.602



80, 16.823, 234.602



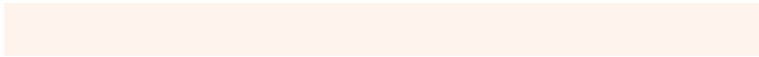
80, 16.823, 284.602

# Sweetspot

The Sweet Spot groups the original color and five complimentary colors.



80, 16.823, 54.612



97, 5.220, 55.801



77, 27.026, 337.391



51, 3.399, 55.761



0, 0.000, 0.000



53, 0.007, 296.813



# Same Dimension

The Same Dimension uses a secret algorithm to generate beautiful new colors.



80, 16.823, 54.612



87, 22.542, 54.276



87, 23.220, 99.689



45, 3.850, 55.637



42, 69.956, 49.604



9, 20.537, 43.333



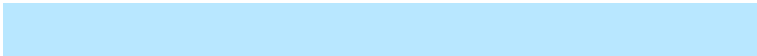


# Inverse Universe

The Inverse Universe completely reimagines the original color for something new.



82, 14.842, 239.048



89, 19.320, 239.736



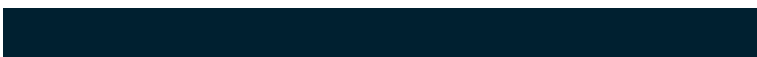
75, 23.983, 285.410



45, 3.677, 237.437



47, 39.594, 262.945



11, 14.851, 252.961



# Previews

## White Background



This preview shows how the CIELCh color 80, 16.823, 54.602 looks on a white background.

## Color Contrast Check

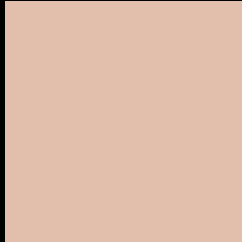
Large Text (above 18pt) WCAG AA × Fail

Any Text WCAG AA × Fail

Large Text (above 18pt) WCAG AAA × Fail

Any Text WCAG AAA × Fail

# Black Background



This preview shows how the CIELCh color 80, 16.823, 54.602 looks on a black background.

## Color Contrast Check

Large Text (above 18pt) WCAG AA ✓ Pass

Any Text WCAG AA ✓ Pass

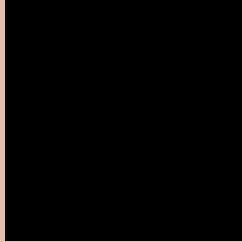
Large Text (above 18pt) WCAG AAA ✓ Pass

Any Text WCAG AAA ✓ Pass

If you want to check with other color combinations, try the [Color Contrast Checker](#).

# CIELCh 80, 16.823, 54.602

## Background



This preview shows how black text looks on a background with the CIELCh color 80, 16.823, 54.602.



This preview shows how white text looks on a background with the CIELCh color 80, 16.823, 54.602.

# Color Blindness Simulation

Color vision deficiency is a very complex topic, and I could not describe the different causes any better than Wikipedia does, so if you want to learn more, you should check out their [article about color blindness](#).

## Dichromacy



### Original Color

80, 16.823, 54.602

### Protanopia

80, 11.649, 91.903

### Deuteranopia

80, 17.158, 53.859



**Tritanopia**  
80, 17.858, 354.507



# Trichromacy



**Original Color**  
80, 16.823, 54.602

**Protanomaly**  
80, 12.705, 75.960

**Deuteranomaly**  
80, 17.158, 53.859

**Tritanomaly**  
80, 15.250, 14.671

# Monochromacy



**Original Color**  
80, 16.823, 54.602

**Achromatopsia**  
81, 0.010, 296.813

**Achromatomaly**  
80, 6.122, 56.876

# CSS Examples

## Text

The CSS property to change the color of the text to CIELCh 80, 16.823, 54.602 is called "color". The color property can be set on classes, ids or directly on the HTML element.

This example shows how text in the color `rgb(226, 191, 173)` looks like.

```
.text, #text, p{  
    color:rgb(226, 191, 173)  
}
```

If you want to add a text shadow in that color use the text-shadow property, you can generate a text shadow directly with our [CSS Text Shadow Generator](#).

Here you see how black text with a 4 pixel rgb(226, 191, 173) colored shadow looks like.

```
.shadow{ text-shadow: 4px 4px 2px rgb(226, 191, 173) }
```

## Border

The CSS property to change the border of an element to CIELCh 80, 16.823, 54.602 is called "border". The border property can be set on classes, ids or directly on the HTML element.

This example shows the color as border, it can be applied via the CSS property "border" or "border-color".

```
.border, #border, table{ border:4px solid rgb(226, 191, 173) }
```

If only the border color should be changed use the property `border-color`.

```
.border{ border-color:rgb(226, 191, 173) }
```

If you want to add a box shadow in that color use:

Here you see how a box with a 4 pixel `rgb(226, 191, 173)` colored shadow looks like.

```
.boxshadow{ -moz-box-shadow:4px 4px 4px 4px rgb(226, 191, 173); -webkit-box-shadow:4px 4px 4px 4px rgb(226, 191, 173); box-shadow:4px 4px 4px 4px rgb(226, 191, 173) }
```

# Background

The CSS property to change the background color of an element to CIELCh 80, 16.823, 54.602 is called "background". The background property can be set on classes, ids or directly on the HTML element.

```
.background, #background, body{  
background: rgb(226, 191, 173) }
```

If only the background color should be changed can be used:

```
.background{ background-color: rgb(226,  
191, 173) }
```

This example shows the color as background, it is applied via the CSS property "background".

To optimize and compress your CSS code, you can use our [online CSS compressor and optimizer](#) based on csstidy. If you want to create a linear or radial gradient as background or border, check our [CSS Gradient Generator](#).

Hey! You found this booklet interesting? Support Converting Colors with the new Membership Option!

The pro membership hides all ads, plus gives you double the colors in the color bucket, and more awesome pro features!

**[Learn more, Memberships starting at \\$2.50/m!](#)**

**Follow me  
on Twitter!**

@ConvertingColor