

Converting Colors

CIELCh(80, 17.884, 70.257)

Have a look what the booklet for
CIELCh(80, 17.884, 70.257) contains.

CIELCh(80, 18.185, 71.376)	3
<i>Conversions</i>	4
<i>Details</i>	6
<i>Harmonies</i>	11
<i>Previews</i>	20
<i>Color Blindness Simulation</i>	23
<i>CSS Examples</i>	26

Color

CIELCh(80, 18.185, 71.376)

Conversions

Conversions Part 1

Format	Color
Hex	DEC2A7
RGB	222, 194, 167
RGB Percent	87%, 76%, 65%
CMY	0.1308, 0.2405, 0.3464
CMYK	0.00, 0.13, 0.25, 0.13
HSL	29°, 45%, 76%
HSV	29°, 25%, 87%
XYZ	56.1742, 56.6813, 44.3769
YIQ	199.2940, 25.3550, -2.4610

Conversions

Conversions Part 2

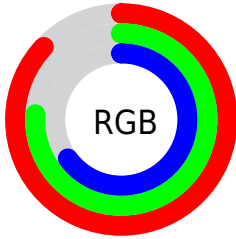
Format	Color
R _Y B	222, 220, 167
Decimal	14598823
CIE Lab	80.00, 5.81, 17.23
CIE LCh	80, 18.185, 71.376
Yxy	56.6813, 0.3573, 0.3605
Android (android.graphics.Color)	4292788903 (0xFFDEC2A7)
YUV	199.2940, -15.9209, 19.9132
Hunter-Lab	75.2870, 1.4327, 17.7532

Details

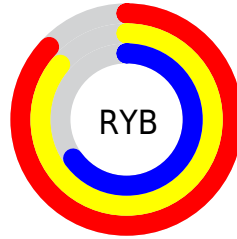
The CIELCh color $80, 18.185, 71.376$ is a light color, and the websafe version is hex `CCCC99`. A complement of this color would be $77, 16.938, 258.149$, and the grayscale version is $80, 0.010, 296.813$.

A 20% lighter version of the original color is $98, 14.324, 101.728$, and $60, 18.032, 70.641$ is the 20% darker color. If you saturate the color by 10%, you get $77, 26.155, 70.145$, and if you desaturate by 10%, it is $83, 10.591, 72.606$.

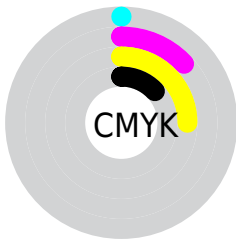
Distribution



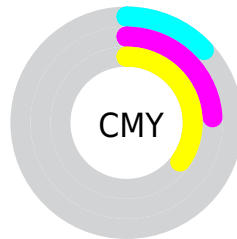
- Red (87%)
- Green (76%)
- Blue (65%)



- Red (87%)
- Yellow (86%)
- Blue (65%)



- Cyan (0%)
- Magenta (13%)
- Yellow (25%)
- Black (13%)



- Cyan (13%)
- Magenta (24%)
- Yellow (35%)


Brightness & Saturation Gradients

These gradients show how the CIELCh color 80, 18.185, 71.376 changes by changing the brightness by 10 percent. The first figure shows a shift by +10% for each color and the second figure -10%.

Similar to the brightness gradients but the following saturation gradients show a change of the CIELCh color 80, 18.185, 71.376 by changing the saturation by 10% instead.

 80, 18.185, 71.376

 80, 18.185, 71.376

 100, 18.185,
71.376

 70, 18.185, 71.376

 60, 18.185, 71.376

 50, 18.185, 71.376

 40, 18.185, 71.376

 30, 18.185, 71.376

 20, 18.185, 71.376

 10, 18.185, 71.376

 0, 18.185, 71.376

 80, 18.185, 71.376

 80, 18.185, 71.376

77, 26.155, 70.145

83, 10.591, 72.606

74, 34.496, 68.896

87, 3.352, 73.743

71, 43.160, 67.633

90, 3.561, 255.173

68, 52.003, 66.325

94, 10.047,
255.695

65, 60.699, 64.891

96, 9.867, 213.765

62, 68.602, 63.153

98, 11.269,
198.753

60, 74.669, 60.780

58, 77.167, 59.372

Harmonies

Complementary

The Complementary color scheme is a pair of colors which are on the opposite of each other on the color wheel.



80, 18.185, 71.376



77, 16.938, 258.149

Rectangle

The Rectangle color scheme consists of four colors that form a rectangle on the color wheel.



80, 18.185, 71.376



80, 18.185, 121.376



80, 18.185, 251.376



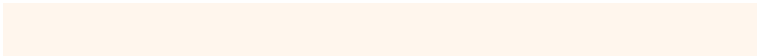
80, 18.185, 301.376

Sweetspot

The Sweet Spot groups the original color and five complimentary colors.



80, 18.185, 71.385



97, 5.505, 73.509



74, 25.482, 344.961



52, 3.583, 73.442



0, 0.000, 0.000



53, 0.007, 296.813

Same Dimension

The Same Dimension uses a secret algorithm to generate beautiful new colors.



80, 18.185, 71.385



89, 24.976, 70.713



87, 27.975, 107.070



44, 3.974, 73.242



46, 64.015, 60.049



10, 18.352, 58.747

Inverse Universe

The Inverse Universe completely reimagines the original color for something new.



77, 16.938, 258.149



85, 22.857, 259.188



70, 29.610, 292.469



44, 3.882, 255.720



38, 52.878, 282.943



7, 17.864, 272.874

Previews

White Background



This preview shows how the CIELCh color 80, 18.185, 71.376 looks on a white background.

Color Contrast Check

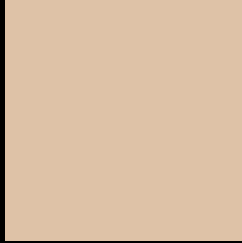
Large Text (above 18pt) WCAG AA × Fail

Any Text WCAG AA × Fail

Large Text (above 18pt) WCAG AAA × Fail

Any Text WCAG AAA × Fail

Black Background



This preview shows how the CIELCh color 80, 18.185, 71.376 looks on a black background.

Color Contrast Check

Large Text (above 18pt) WCAG AA ✓ Pass

Any Text WCAG AA ✓ Pass

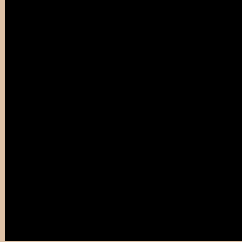
Large Text (above 18pt) WCAG AAA ✓ Pass

Any Text WCAG AAA ✓ Pass

If you want to check with other color combinations, try the [Color Contrast Checker](#).

CIELCh 80, 18.185, 71.376

Background



This preview shows how black text looks on a background with the CIELCh color 80, 18.185, 71.376.



This preview shows how white text looks on a background with the CIELCh color 80, 18.185, 71.376.

Color Blindness Simulation

Color vision deficiency is a very complex topic, and I could not describe the different causes any better than Wikipedia does, so if you want to learn more, you should check out their [article about color blindness](#).

Dichromacy



Original Color

80, 18.185, 71.376

Protanopia

80, 15.950, 93.170

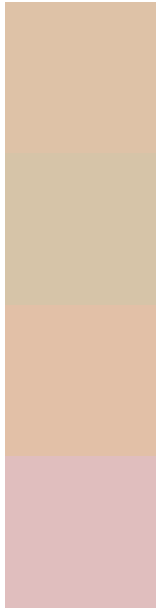
Deuteranopia

80, 19.895, 59.696



Tritanopia
80, 16.183, 351.319

Trichromacy



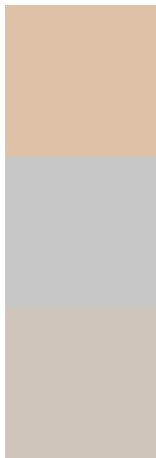
Original Color
80, 18.185, 71.376

Protanomaly
80, 16.468, 83.420

Deuteranomaly
80, 19.036, 63.898

Tritanomaly
80, 12.910, 20.402

Monochromacy



Original Color
80, 18.185, 71.376

Achromatopsia
80, 0.010, 296.813

Achromatomaly
80, 6.494, 74.189

CSS Examples

Text

The CSS property to change the color of the text to CIELCh 80, 18.185, 71.376 is called "color". The color property can be set on classes, ids or directly on the HTML element.

This example shows how text in the color `rgb(222, 194, 167)` looks like.

```
.text, #text, p{  
    color:rgb(222, 194, 167)  
}
```

If you want to add a text shadow in that color use the text-shadow property, you can generate a text shadow directly with our [CSS Text Shadow Generator](#).

Here you see how black text with a 4 pixel rgb(222, 194, 167) colored shadow looks like.

```
.shadow{ text-shadow: 4px 4px 2px rgb(222, 194, 167) }
```

Border

The CSS property to change the border of an element to CIELCh 80, 18.185, 71.376 is called "border". The border property can be set on classes, ids or directly on the HTML element.

This example shows the color as border, it can be applied via the CSS property "border" or "border-color".

```
.border, #border, table{ border:4px solid rgb(222, 194, 167) }
```

If only the border color should be changed use the property `border-color`.

```
.border{ border-color:rgb(222, 194, 167) }
```

If you want to add a box shadow in that color use:

Here you see how a box with a 4 pixel `rgb(222, 194, 167)` colored shadow looks like.

```
.boxshadow{ -moz-box-shadow:4px 4px 4px  
4px rgb(222, 194, 167); -webkit-box-  
shadow:4px 4px 4px 4px rgb(222, 194, 167);  
box-shadow:4px 4px 4px 4px rgb(222, 194,  
167) }
```

Background

The CSS property to change the background color of an element to CIELCh 80, 18.185, 71.376 is called "background". The background property can be set on classes, ids or directly on the HTML element.

```
.background, #background, body{  
background: rgb(222, 194, 167) }
```

If only the background color should be changed can be used:

```
.background{ background-color: rgb(222,  
194, 167) }
```

This example shows the color as background, it is applied via the CSS property "background".

To optimize and compress your CSS code, you can use our [online CSS compressor and optimizer](#) based on csstidy. If you want to create a linear or radial gradient as background or border, check our [CSS Gradient Generator](#).

Hey! You found this booklet interesting? Support Converting Colors with the new Membership Option!

The pro membership hides all ads, plus gives you double the colors in the color bucket, and more awesome pro features!

[Learn more, Memberships starting at \\$2.50/m!](#)

**Follow me
on Twitter!**

@ConvertingColor