

Converting Colors

CIELCh(80, 20.921, 3.911)

Have a look what the booklet for
CIELCh(80, 20.921, 3.911) contains.

CIELCh(80, 20.813, 4.996)	3
<i>Conversions</i>	4
<i>Details</i>	6
<i>Harmonies</i>	11
<i>Previews</i>	20
<i>Color Blindness Simulation</i>	23
<i>CSS Examples</i>	26

Color

CIELCh(80, 20.813, 4.996)

Conversions

Conversions Part 1

Format	Color
Hex	EEB9C4
RGB	238, 185, 196
RGB Percent	93%, 73%, 77%
CMY	0.0678, 0.2756, 0.2325
CMYK	0.00, 0.22, 0.18, 0.07
HSL	348°, 61%, 83%
HSV	348°, 22%, 93%
XYZ	62.3848, 56.6813, 59.7109
YIQ	202.1010, 28.0570, 14.6570

Conversions

Conversions Part 2

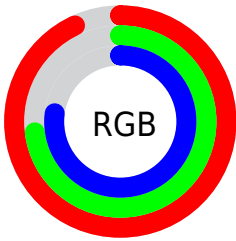
Format	Color
R _Y B	238, 185, 196
Decimal	15645124
CIE Lab	80.00, 20.73, 1.81
CIE LCh	80, 20.813, 4.996
Yxy	56.6813, 0.3490, 0.3171
Android (android.graphics.Color)	4293835204 (0xFFEEB9C4)
YUV	202.1010, -3.0078, 31.4834
Hunter-Lab	75.2870, 16.1577, 5.6774

Details

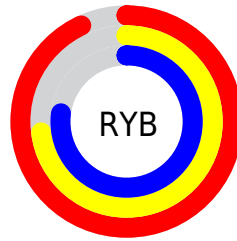
The CIELCh color **80, 20.813, 4.996** is a light color, and the websafe version is hex **FFCCCC**. A complement of this color would be **90, 19.035, 180.637**, and the grayscale version is **81, 0.010, 296.813**.

A 20% lighter version of the original color is **97, 7.905, 328.895**, and **60, 20.437, 5.832** is the 20% darker color. If you saturate the color by 10%, you get **74, 30.801, 6.402**, and if you desaturate by 10%, it is **86, 11.194, 3.817**.

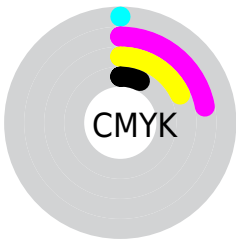
Distribution



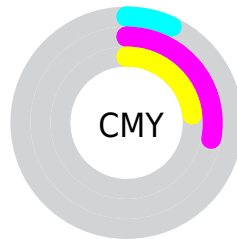
- Red (93%)
- Green (73%)
- Blue (77%)



- Red (93%)
- Yellow (73%)
- Blue (77%)



- Cyan (0%)
- Magenta (22%)
- Yellow (18%)
- Black (7%)



- Cyan (7%)
- Magenta (28%)
- Yellow (23%)

Brightness & Saturation Gradients

These gradients show how the CIELCh color 80, 20.813, 4.996 changes by changing the brightness by 10 percent. The first figure shows a shift by +10% for each color and the second figure -10%.

Similar to the brightness gradients but the following saturation gradients show a change of the CIELCh color 80, 20.813, 4.996 by changing the saturation by 10% instead.

80, 20.813, 4.996

80, 20.813, 4.996

100, 20.813, 4.996

70, 20.813, 4.996

60, 20.813, 4.996

50, 20.813, 4.996

40, 20.813, 4.996

30, 20.813, 4.996

20, 20.813, 4.996

10, 20.813, 4.996

0, 20.813, 4.996

80, 20.813, 4.996

80, 20.813, 4.996

74, 30.801, 6.402

86, 11.194, 3.817

68, 41.000, 8.113

93, 2.033, 2.602

63, 51.139, 10.244

99, 6.153, 185.881

59, 60.848, 12.939

99, 5.939, 199.141

55, 69.717, 16.356

52, 77.436, 20.620

51, 83.951, 25.699

50, 88.419, 29.836

Harmonies

Complementary

The Complementary color scheme is a pair of colors which are on the opposite of each other on the color wheel.



80, 20.813, 4.996



90, 19.035, 180.637

Rectangle

The Rectangle color scheme consists of four colors that form a rectangle on the color wheel.



80, 20.813, 4.996



80, 20.813, 54.996



80, 20.813, 184.996



80, 20.813, 234.996

Sweetspot

The Sweet Spot groups the original color and five complimentary colors.



80, 20.811, 5.001



95, 6.659, 3.241



80, 31.764, 319.291



50, 4.333, 3.308



0, 0.000, 0.000



53, 0.007, 296.813

Same Dimension

The Same Dimension uses a secret algorithm to generate beautiful new colors.



80, 20.811, 5.001



82, 26.978, 5.643



83, 16.759, 48.261



47, 5.173, 3.510



38, 72.240, 28.855



8, 28.981, 15.220

Inverse Universe

The Inverse Universe completely reimagines the original color for something new.



80, 20.811, 5.001



82, 26.978, 5.643



87, 14.646, 231.352



47, 5.173, 3.510



38, 72.240, 28.855



8, 28.981, 15.220

Previews

White Background



This preview shows how the CIELCh color 80, 20.813, 4.996 looks on a white background.

Color Contrast Check

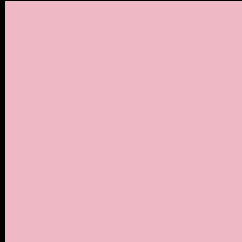
Large Text (above 18pt) WCAG AA × Fail

Any Text WCAG AA × Fail

Large Text (above 18pt) WCAG AAA × Fail

Any Text WCAG AAA × Fail

Black Background



This preview shows how the CIELCh color 80, 20.813, 4.996 looks on a black background.

Color Contrast Check

Large Text (above 18pt) WCAG AA ✓ Pass

Any Text WCAG AA ✓ Pass

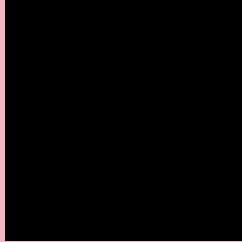
Large Text (above 18pt) WCAG AAA ✓ Pass

Any Text WCAG AAA ✓ Pass

If you want to check with other color combinations, try the [Color Contrast Checker](#).

CIELCh 80, 20.813, 4.996

Background



This preview shows how black text looks on a background with the CIELCh color 80, 20.813, 4.996.



This preview shows how white text looks on a background with the CIELCh color 80, 20.813, 4.996.

Color Blindness Simulation

Color vision deficiency is a very complex topic, and I could not describe the different causes any better than Wikipedia does, so if you want to learn more, you should check out their [article about color blindness](#).

Dichromacy



Original Color


80, 20.813, 4.996

Protanopia

80, 2.897, 312.532

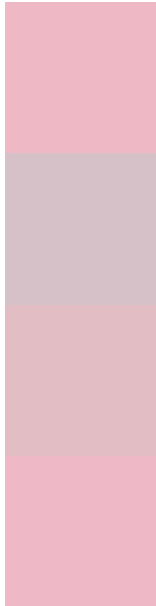
Deuteranopia

80, 10.197, 14.221



Tritanopia
80, 21.728, 359.903

Trichromacy



Original Color
80, 20.813, 4.996

Protanomaly
80, 8.634, 354.562

Deuteranomaly
80, 14.280, 7.727

Tritanomaly
80, 21.578, 1.235

Monochromacy



Original Color
80, 20.813, 4.996

Achromatopsia
81, 0.010, 296.813

Achromatomaly
81, 7.361, 3.208

CSS Examples

Text

The CSS property to change the color of the text to CIELCh 80, 20.813, 4.996 is called "color". The color property can be set on classes, ids or directly on the HTML element.

This example shows how text in the color `rgb(238, 185, 196)` looks like.

```
.text, #text, p{  
    color:rgb(238, 185, 196)  
}
```

If you want to add a text shadow in that color use the text-shadow property, you can generate a text shadow directly with our [CSS Text Shadow Generator](#).

Here you see how black text with a 4 pixel rgb(238, 185, 196) colored shadow looks like.

```
.shadow{ text-shadow: 4px 4px 2px rgb(238, 185, 196) }
```

Border

The CSS property to change the border of an element to CIELCh 80, 20.813, 4.996 is called "border". The border property can be set on classes, ids or directly on the HTML element.

This example shows the color as border, it can be applied via the CSS property "border" or "border-color".

```
.border, #border, table{ border:4px solid rgb(238, 185, 196) }
```

If only the border color should be changed use the property border-color.

```
.border{ border-color:rgb(238, 185, 196) }
```

If you want to add a box shadow in that color use:

Here you see how a box with a 4 pixel rgb(238, 185, 196) colored shadow looks like.

```
.boxshadow{ -moz-box-shadow:4px 4px 4px  
4px rgb(238, 185, 196); -webkit-box-  
shadow:4px 4px 4px 4px rgb(238, 185, 196);  
box-shadow:4px 4px 4px 4px rgb(238, 185,  
196) }
```

Background

The CSS property to change the background color of an element to CIELCh 80, 20.813, 4.996 is called "background". The background property can be set on classes, ids or directly on the HTML element.

```
.background, #background, body{  
background: rgb(238, 185, 196) }
```

If only the background color should be changed can be used:

```
.background{ background-color: rgb(238,  
185, 196) }
```

This example shows the color as background, it is applied via the CSS property "background".

To optimize and compress your CSS code, you can use our [online CSS compressor and optimizer](#) based on csstidy. If you want to create a linear or radial gradient as background or border, check our [CSS Gradient Generator](#).

Hey! You found this booklet interesting? Support Converting Colors with the new Membership Option!

The pro membership hides all ads, plus gives you double the colors in the color bucket, and more awesome pro features!

[Learn more, Memberships starting at \\$2.50/m!](#)

**Follow me
on Twitter!**

@ConvertingColor