

Converting Colors

CIELCh(80, 23.908, 40.671)

Have a look what the booklet for
CIELCh(80, 23.908, 40.671) contains.

CIELCh(80, 24.008, 41.480)	3
<i>Conversions</i>	4
<i>Details</i>	6
<i>Harmonies</i>	11
<i>Previews</i>	20
<i>Color Blindness Simulation</i>	23
<i>CSS Examples</i>	26

Color

CIELCh(80, 24.008, 41.480)

Conversions

Conversions Part 1

Format	Color
Hex	F2BAAA
RGB	242, 186, 170
RGB Percent	95%, 73%, 67%
CMY	0.0524, 0.2719, 0.3346
CMYK	0.00, 0.23, 0.30, 0.05
HSL	13°, 73%, 81%
HSV	13°, 30%, 95%
XYZ	61.2089, 56.6813, 45.5825
YIQ	200.9200, 38.5120, 6.8960

Conversions

Conversions Part 2

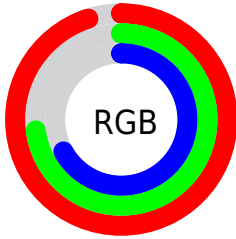
Format	Color
R _Y B	242, 191, 170
Decimal	15907498
CIE Lab	80.00, 17.99, 15.90
CIE LCh	80, 24.008, 41.480
Yxy	56.6813, 0.3744, 0.3467
Android (android.graphics.Color)	4294097578 (0xFFFF2BAAA)
YUV	200.9200, -15.2436, 36.0272
Hunter-Lab	75.2870, 13.3697, 16.8037

Details

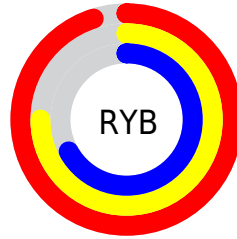
The CIELCh color **80, 24.008, 41.480** is a light color, and the websafe version is hex **FFCCCC**. A complement of this color would be **87, 19.585, 223.853**, and the grayscale version is **81, 0.010, 296.813**.

A 20% lighter version of the original color is **96, 9.881, 80.734**, and **60, 24.057, 41.668** is the 20% darker color. If you saturate the color by 10%, you get **75, 33.434, 41.561**, and if you desaturate by 10%, it is **85, 15.294, 41.559**.

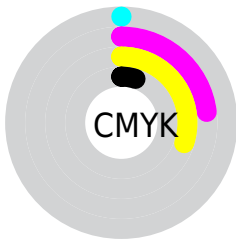
Distribution



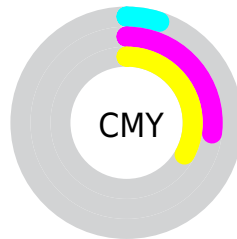
- Red (95%)
- Green (73%)
- Blue (67%)



- Red (95%)
- Yellow (75%)
- Blue (67%)



- Cyan (0%)
- Magenta (23%)
- Yellow (30%)
- Black (5%)



- Cyan (5%)
- Magenta (27%)
- Yellow (33%)

Brightness & Saturation Gradients

These gradients show how the CIELCh color 80, 24.008, 41.480 changes by changing the brightness by 10 percent. The first figure shows a shift by +10% for each color and the second figure -10%.

Similar to the brightness gradients but the following saturation gradients show a change of the CIELCh color 80, 24.008, 41.480 by changing the saturation by 10% instead.

80, 24.008, 41.480

80, 24.008, 41.480

100, 24.008,
41.480

70, 24.008, 41.480

60, 24.008, 41.480

50, 24.008, 41.480

40, 24.008, 41.480

30, 24.008, 41.480

20, 24.008, 41.480

10, 24.008, 41.480

0, 24.008, 41.480

80, 24.008, 41.480

80, 24.008, 41.480

75, 33.434, 41.561

85, 15.294, 41.559

70, 43.578, 41.819

90, 7.258, 41.721

66, 54.375, 42.285

95, 0.158, 226.026

62, 65.630, 42.944

99, 4.604, 199.257

59, 76.888, 43.676

56, 87.110, 44.116

53, 94.749, 43.791

53, 94.903, 43.791

Harmonies

Complementary

The Complementary color scheme is a pair of colors which are on the opposite of each other on the color wheel.



80, 24.008, 41.480



87, 19.585, 223.853

Rectangle

The Rectangle color scheme consists of four colors that form a rectangle on the color wheel.



80, 24.008, 41.480



80, 24.008, 91.480



80, 24.008, 221.480



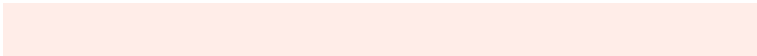
80, 24.008, 271.480

Sweetspot

The Sweet Spot groups the original color and five complimentary colors.



80, 24.007, 41.487



95, 6.953, 41.733



78, 39.269, 333.080



50, 4.860, 41.709



0, 0.000, 0.000



53, 0.007, 296.813

Same Dimension

The Same Dimension uses a secret algorithm to generate beautiful new colors.



80, 24.007, 41.487



81, 31.123, 41.514



89, 27.908, 91.167



47, 4.182, 41.726



41, 76.775, 44.241



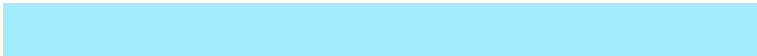
10, 25.886, 36.470

Inverse Universe

The Inverse Universe completely reimagines the original color for something new.



87, 19.585, 223.853



89, 24.137, 224.474



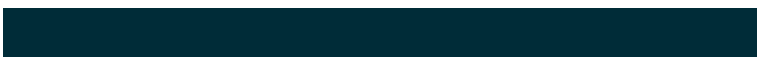
77, 28.216, 279.420



49, 3.947, 222.560



55, 34.818, 240.373



16, 14.930, 233.673

Previews

White Background



This preview shows how the CIELCh color 80, 24.008, 41.480 looks on a white background.

Color Contrast Check

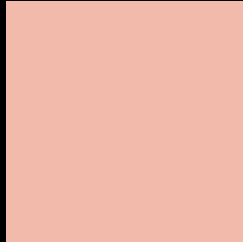
Large Text (above 18pt) WCAG AA × Fail

Any Text WCAG AA × Fail

Large Text (above 18pt) WCAG AAA × Fail

Any Text WCAG AAA × Fail

Black Background



This preview shows how the CIELCh color 80, 24.008, 41.480 looks on a black background.

Color Contrast Check

Large Text (above 18pt) WCAG AA ✓ Pass

Any Text WCAG AA ✓ Pass

Large Text (above 18pt) WCAG AAA ✓ Pass

Any Text WCAG AAA ✓ Pass

If you want to check with other color combinations, try the [Color Contrast Checker](#).

CIELCh 80, 24.008, 41.480

Background



This preview shows how black text looks on a background with the CIELCh color 80, 24.008, 41.480.

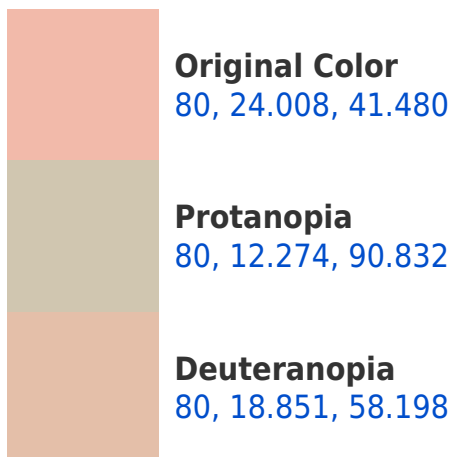


This preview shows how white text looks on a background with the CIELCh color 80, 24.008, 41.480.

Color Blindness Simulation

Color vision deficiency is a very complex topic, and I could not describe the different causes any better than Wikipedia does, so if you want to learn more, you should check out their [article about color blindness](#).

Dichromacy





Tritanopia
80, 24.530, 4.051

Trichromacy



Original Color
80, 24.008, 41.480

Protanomaly
80, 14.731, 65.697

Deuteranomaly
80, 20.587, 51.276

Tritanomaly
80, 23.190, 17.449

Monochromacy



Original Color
80, 24.008, 41.480

Achromatopsia
81, 0.010, 296.813

Achromatomaly
80, 8.361, 38.353

CSS Examples

Text

The CSS property to change the color of the text to CIELCh 80, 24.008, 41.480 is called "color". The color property can be set on classes, ids or directly on the HTML element.

This example shows how text in the color `rgb(242, 186, 170)` looks like.

```
.text, #text, p{  
    color:rgb(242, 186, 170)  
}
```

If you want to add a text shadow in that color use the text-shadow property, you can generate a text shadow directly with our [CSS Text Shadow Generator](#).

Here you see how black text with a 4 pixel rgb(242, 186, 170) colored shadow looks like.

```
.shadow{ text-shadow: 4px 4px 2px rgb(242, 186, 170) }
```

Border

The CSS property to change the border of an element to CIELCh 80, 24.008, 41.480 is called "border". The border property can be set on classes, ids or directly on the HTML element.

This example shows the color as border, it can be applied via the CSS property "border" or "border-color".

```
.border, #border, table{ border:4px solid rgb(242, 186, 170) }
```

If only the border color should be changed use the property `border-color`.

```
.border{ border-color:rgb(242, 186, 170) }
```

If you want to add a box shadow in that color use:

Here you see how a box with a 4 pixel `rgb(242, 186, 170)` colored shadow looks like.

```
.boxshadow{ -moz-box-shadow:4px 4px 4px  
4px rgb(242, 186, 170); -webkit-box-  
shadow:4px 4px 4px 4px rgb(242, 186, 170);  
box-shadow:4px 4px 4px 4px rgb(242, 186,  
170) }
```

Background

The CSS property to change the background color of an element to CIELCh 80, 24.008, 41.480 is called "background". The background property can be set on classes, ids or directly on the HTML element.

```
.background, #background, body{  
background: rgb(242, 186, 170) }
```

If only the background color should be changed can be used:

```
.background{ background-color: rgb(242,  
186, 170) }
```

This example shows the color as background, it is applied via the CSS property "background".

To optimize and compress your CSS code, you can use our [online CSS compressor and optimizer](#) based on csstidy. If you want to create a linear or radial gradient as background or border, check our [CSS Gradient Generator](#).

Hey! You found this booklet interesting? Support Converting Colors with the new Membership Option!

The pro membership hides all ads, plus gives you double the colors in the color bucket, and more awesome pro features!

[Learn more, Memberships starting at \\$2.50/m!](#)

**Follow me
on Twitter!**

@ConvertingColor