

Converting Colors

CIELCh(80, 24.458, 44.708)

Have a look what the booklet for
CIELCh(80, 24.458, 44.708) contains.

CIELCh(80, 24.389, 45.078)	3
<i>Conversions</i>	4
<i>Details</i>	6
<i>Harmonies</i>	11
<i>Previews</i>	20
<i>Color Blindness Simulation</i>	23
<i>CSS Examples</i>	26

Color

CIELCh(80, 24.389, 45.078)

Conversions

Conversions Part 1

Format	Color
Hex	F1BAA7
RGB	241, 186, 167
RGB Percent	95%, 73%, 65%
CMY	0.0544, 0.2701, 0.3447
CMYK	0.00, 0.23, 0.31, 0.05
HSL	15°, 73%, 80%
HSV	15°, 31%, 95%
XYZ	60.8844, 56.6813, 44.3443
YIQ	200.2790, 38.8790, 5.7510

Conversions

Conversions Part 2

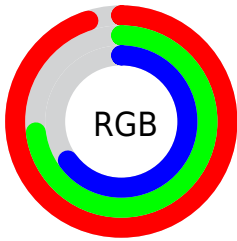
Format	Color
R _Y B	241, 193, 167
Decimal	15841959
CIE Lab	80.00, 17.22, 17.27
CIE LCh	80, 24.389, 45.078
Yxy	56.6813, 0.3760, 0.3501
Android (android.graphics.Color)	4294032039 (0xFFF1BAA7)
YUV	200.2790, -16.4065, 35.7123
Hunter-Lab	75.2870, 12.6004, 17.7788

Details

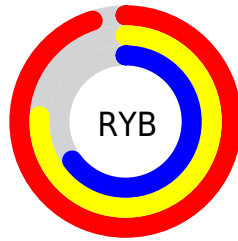
The CIELCh color **80, 24.389, 45.078** is a light color, and the websafe version is hex **FFCCCC**. A complement of this color would be **85, 19.927, 228.670**, and the grayscale version is **81, 0.010, 296.813**.

A 20% lighter version of the original color is **96, 11.260, 84.278**, and **60, 24.492, 45.398** is the 20% darker color. If you saturate the color by 10%, you get **75, 33.687, 44.949**, and if you desaturate by 10%, it is **85, 15.783, 45.346**.

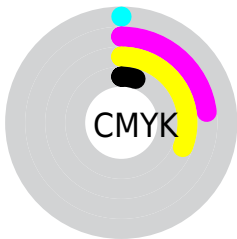
Distribution



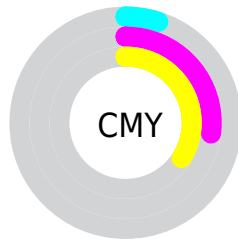
- Red (95%)
- Green (73%)
- Blue (65%)



- Red (95%)
- Yellow (76%)
- Blue (65%)



- Cyan (0%)
- Magenta (23%)
- Yellow (31%)
- Black (5%)



- Cyan (5%)
- Magenta (27%)
- Yellow (34%)

Brightness & Saturation Gradients

These gradients show how the CIELCh color 80, 24.389, 45.078 changes by changing the brightness by 10 percent. The first figure shows a shift by +10% for each color and the second figure -10%.

Similar to the brightness gradients but the following saturation gradients show a change of the CIELCh color 80, 24.389, 45.078 by changing the saturation by 10% instead.

 80, 24.389, 45.078

 80, 24.389, 45.078

 100, 24.389,
45.078

 70, 24.389, 45.078

 60, 24.389, 45.078

 50, 24.389, 45.078

 40, 24.389, 45.078

 30, 24.389, 45.078

 20, 24.389, 45.078

 10, 24.389, 45.078

 0, 24.389, 45.078

 80, 24.389, 45.078

 80, 24.389, 45.078

75, 33.687, 44.949

85, 15.783, 45.346

71, 43.684, 44.969

90, 7.834, 45.684

67, 54.315, 45.156

95, 0.485, 44.971

63, 65.382, 45.482

99, 4.782, 199.241

59, 76.400, 45.808

56, 86.282, 45.754

54, 93.233, 45.031

Harmonies

Complementary

The Complementary color scheme is a pair of colors which are on the opposite of each other on the color wheel.



80, 24.389, 45.078



85, 19.927, 228.670

Rectangle

The Rectangle color scheme consists of four colors that form a rectangle on the color wheel.



80, 24.389, 45.078



80, 24.389, 95.078



80, 24.389, 225.078



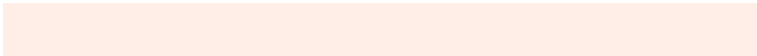
80, 24.389, 275.078

Sweetspot

The Sweet Spot groups the original color and five complimentary colors.



80, 24.388, 45.085



95, 6.854, 45.740



77, 39.469, 334.448



50, 4.791, 45.691



0, 0.000, 0.000



53, 0.007, 296.813

Same Dimension

The Same Dimension uses a secret algorithm to generate beautiful new colors.



80, 24.388, 45.085



81, 31.585, 44.982



89, 29.612, 93.456



48, 4.123, 45.725



42, 75.527, 45.534



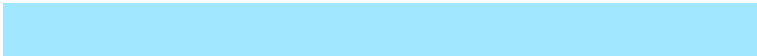
10, 25.399, 38.847

Inverse Universe

The Inverse Universe completely reimagines the original color for something new.



85, 19.927, 228.670



88, 24.558, 229.473



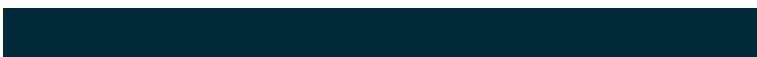
76, 30.275, 281.801



49, 3.900, 226.868



53, 36.023, 247.627



15, 15.186, 240.129

Previews

White Background



This preview shows how the CIELCh color 80, 24.389, 45.078 looks on a white background.

Color Contrast Check

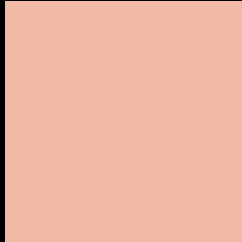
Large Text (above 18pt) WCAG AA × Fail

Any Text WCAG AA × Fail

Large Text (above 18pt) WCAG AAA × Fail

Any Text WCAG AAA × Fail

Black Background



This preview shows how the CIE LCh color 80, 24.389, 45.078 looks on a black background.

Color Contrast Check

Large Text (above 18pt) WCAG AA ✓ Pass

Any Text WCAG AA ✓ Pass

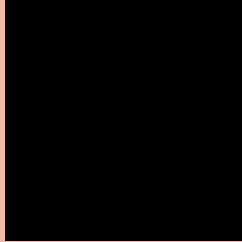
Large Text (above 18pt) WCAG AAA ✓ Pass

Any Text WCAG AAA ✓ Pass

If you want to check with other color combinations, try the [Color Contrast Checker](#).

CIELCh 80, 24.389, 45.078

Background



This preview shows how black text looks on a background with the CIELCh color 80, 24.389, 45.078.



This preview shows how white text looks on a background with the CIELCh color 80, 24.389, 45.078.

Color Blindness Simulation

Color vision deficiency is a very complex topic, and I could not describe the different causes any better than Wikipedia does, so if you want to learn more, you should check out their [article about color blindness](#).

Dichromacy



Original Color

80, 24.389, 45.078

Protanopia

80, 13.799, 92.678

Deuteranopia

80, 20.266, 60.747



Tritanopia
80, 24.530, 4.051

Trichromacy



Original Color
80, 24.389, 45.078

Protanomaly
80, 15.964, 69.369

Deuteranomaly
80, 21.558, 54.635

Tritanomaly
80, 23.212, 18.745

Monochromacy



Original Color
80, 24.389, 45.078

Achromatopsia
81, 0.010, 296.813

Achromatomaly
80, 8.436, 45.904

CSS Examples

Text

The CSS property to change the color of the text to CIELCh 80, 24.389, 45.078 is called "color". The color property can be set on classes, ids or directly on the HTML element.

This example shows how text in the color `rgb(241, 186, 167)` looks like.

```
.text, #text, p{  
    color:rgb(241, 186, 167)  
}
```

If you want to add a text shadow in that color use the text-shadow property, you can generate a text shadow directly with our [CSS Text Shadow Generator](#).

Here you see how black text with a 4 pixel rgb(241, 186, 167) colored shadow looks like.

```
.shadow{ text-shadow: 4px 4px 2px rgb(241, 186, 167) }
```

Border

The CSS property to change the border of an element to CIELCh 80, 24.389, 45.078 is called "border". The border property can be set on classes, ids or directly on the HTML element.

This example shows the color as border, it can be applied via the CSS property "border" or "border-color".

```
.border, #border, table{ border:4px solid rgb(241, 186, 167) }
```

If only the border color should be changed use the property `border-color`.

```
.border{ border-color:rgb(241, 186, 167) }
```

If you want to add a box shadow in that color use:

Here you see how a box with a 4 pixel `rgb(241, 186, 167)` colored shadow looks like.

```
.boxshadow{ -moz-box-shadow:4px 4px 4px  
4px rgb(241, 186, 167); -webkit-box-  
shadow:4px 4px 4px 4px rgb(241, 186, 167);  
box-shadow:4px 4px 4px 4px rgb(241, 186,  
167) }
```

Background

The CSS property to change the background color of an element to CIELCh 80, 24.389, 45.078 is called "background". The background property can be set on classes, ids or directly on the HTML element.

```
.background, #background, body{  
background: rgb(241, 186, 167) }
```

If only the background color should be changed can be used:

```
.background{ background-color: rgb(241,  
186, 167) }
```

This example shows the color as background, it is applied via the CSS property "background".

To optimize and compress your CSS code, you can use our [online CSS compressor and optimizer](#) based on csstidy. If you want to create a linear or radial gradient as background or border, check our [CSS Gradient Generator](#).

Hey! You found this booklet interesting? Support Converting Colors with the new Membership Option!

The pro membership hides all ads, plus gives you double the colors in the color bucket, and more awesome pro features!

[Learn more, Memberships starting at \\$2.50/m!](#)

**Follow me
on Twitter!**

@ConvertingColor