

Converting Colors

CIELCh(80, 25.009, 69.254)

Have a look what the booklet for
CIELCh(80, 25.009, 69.254) contains.

CIELCh(80, 25.009, 69.254)	3
<i>Conversions</i>	4
<i>Details</i>	6
<i>Harmonies</i>	11
<i>Previews</i>	20
<i>Color Blindness Simulation</i>	23
<i>CSS Examples</i>	26

Color

CIELCh(80, 25.009, 69.254)

Conversions

Conversions Part 1

Format	Color
Hex	E6BF9B
RGB	230, 191, 155
RGB Percent	90%, 75%, 61%
CMY	0.0966, 0.2496, 0.3908
CMYK	0.00, 0.17, 0.33, 0.10
HSL	29°, 60%, 76%
HSV	29°, 33%, 90%
XYZ	57.4086, 56.6813, 39.0774
YIQ	198.5570, 34.8000, -2.9280

Conversions

Conversions Part 2

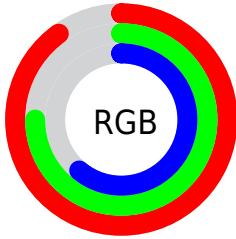
Format	Color
R _Y B	230, 224, 155
Decimal	15122331
CIE Lab	80.00, 8.86, 23.39
CIE LCh	80, 25.009, 69.254
Yxy	56.6813, 0.3748, 0.3701
Android (android.graphics.Color)	4293312411 (0xFFE6BF9B)
YUV	198.5570, -21.4736, 27.5755
Hunter-Lab	75.2870, 4.3595, 21.9266

Details

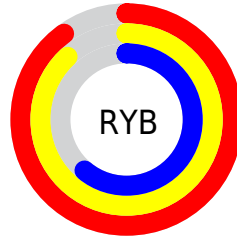
The CIELCh color **80, 25.009, 69.254** is a light color, and the websafe version is hex **FFCC99**. A complement of this color would be **77, 22.560, 258.426**, and the grayscale version is **80, 0.010, 296.813**.

A 20% lighter version of the original color is **97, 19.037, 99.691**, and **60, 24.784, 69.772** is the 20% darker color. If you saturate the color by 10%, you get **77, 33.534, 68.040**, and if you desaturate by 10%, it is **83, 16.890, 70.477**.

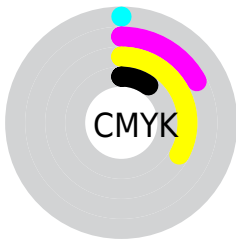
Distribution



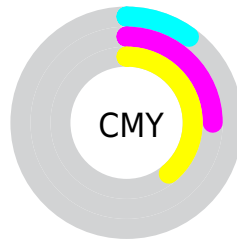
- Red (90%)
- Green (75%)
- Blue (61%)



- Red (90%)
- Yellow (88%)
- Blue (61%)



- Cyan (0%)
- Magenta (17%)
- Yellow (33%)
- Black (10%)



- Cyan (10%)
- Magenta (25%)
- Yellow (39%)

Brightness & Saturation Gradients

These gradients show how the CIELCh color 80, 25.009, 69.254 changes by changing the brightness by 10 percent. The first figure shows a shift by +10% for each color and the second figure -10%.

Similar to the brightness gradients but the following saturation gradients show a change of the CIELCh color 80, 25.009, 69.254 by changing the saturation by 10% instead.

80, 25.009, 69.254

80, 25.009, 69.254

100, 25.009,
69.254

70, 25.009, 69.254

60, 25.009, 69.254

50, 25.009, 69.254

40, 25.009, 69.254

30, 25.009, 69.254

20, 25.009, 69.254

10, 25.009, 69.254

0, 25.009, 69.254

80, 25.009, 69.254

80, 25.009, 69.254

77, 33.534, 68.040

83, 16.890, 70.477

73, 42.429, 66.811

87, 9.170, 71.672

70, 51.579, 65.554

91, 1.823, 72.686

67, 60.703, 64.199

94, 5.185, 254.181

64, 69.217, 62.590

97, 7.332, 214.208

62, 76.107, 60.420

98, 8.396, 198.953

60, 79.888, 58.396

Harmonies

Complementary

The Complementary color scheme is a pair of colors which are on the opposite of each other on the color wheel.



80, 25.009, 69.254



77, 22.560, 258.426

Rectangle

The Rectangle color scheme consists of four colors that form a rectangle on the color wheel.



80, 25.009, 69.254



80, 25.009, 119.254



80, 25.009, 249.254



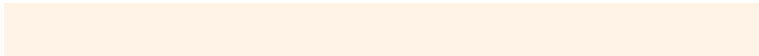
80, 25.009, 299.254

Sweetspot

The Sweet Spot groups the original color and five complimentary colors.



80, 25.009, 69.261



96, 7.872, 71.964



72, 34.966, 344.873



51, 5.390, 71.801



0, 0.000, 0.000



53, 0.007, 296.813

Same Dimension

The Same Dimension uses a secret algorithm to generate beautiful new colors.



80, 25.009, 69.261



85, 33.078, 68.449



89, 37.137, 105.559



46, 4.098, 72.033



47, 65.749, 59.079



12, 20.933, 58.422

Inverse Universe

The Inverse Universe completely reimagines the original color for something new.



77, 22.560, 258.426



81, 29.135, 259.904



67, 40.049, 293.034



46, 3.996, 254.499



40, 52.952, 281.911



9, 19.114, 273.041

Previews

White Background



This preview shows how the CIELCh color 80, 25.009, 69.254 looks on a white background.

Color Contrast Check

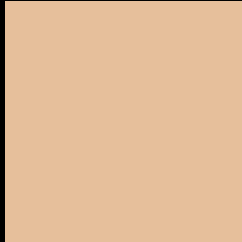
Large Text (above 18pt) WCAG AA × Fail

Any Text WCAG AA × Fail

Large Text (above 18pt) WCAG AAA × Fail

Any Text WCAG AAA × Fail

Black Background



This preview shows how the CIELCh color 80, 25.009, 69.254 looks on a black background.

Color Contrast Check

Large Text (above 18pt) WCAG AA ✓ Pass

Any Text WCAG AA ✓ Pass

Large Text (above 18pt) WCAG AAA ✓ Pass

Any Text WCAG AAA ✓ Pass

If you want to check with other color combinations, try the [Color Contrast Checker](#).

CIELCh 80, 25.009, 69.254

Background



This preview shows how black text looks on a background with the CIELCh color 80, 25.009, 69.254.



This preview shows how white text looks on a background with the CIELCh color 80, 25.009, 69.254.

Color Blindness Simulation

Color vision deficiency is a very complex topic, and I could not describe the different causes any better than Wikipedia does, so if you want to learn more, you should check out their [article about color blindness](#).

Dichromacy



Original Color
80, 25.009, 69.254

Protanopia
80, 21.277, 94.249

Deuteranopia
80, 25.559, 67.864



Tritanopia
80, 20.299, 358.153

Trichromacy



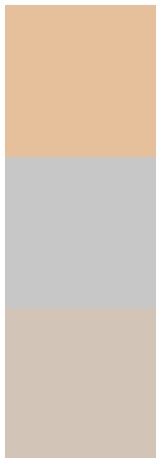
Original Color
80, 25.009, 69.254

Protanomaly
80, 22.023, 84.786

Deuteranomaly
80, 25.282, 68.551

Tritanomaly
80, 17.846, 25.876

Monochromacy



Original Color
80, 25.009, 69.254

Achromatopsia
80, 0.010, 296.813

Achromatomaly
80, 8.713, 71.807

CSS Examples

Text

The CSS property to change the color of the text to CIELCh 80, 25.009, 69.254 is called "color". The color property can be set on classes, ids or directly on the HTML element.

This example shows how text in the color `rgb(230, 191, 155)` looks like.

```
.text, #text, p{  
    color:rgb(230, 191, 155)  
}
```

If you want to add a text shadow in that color use the text-shadow property, you can generate a text shadow directly with our [CSS Text Shadow Generator](#).

Here you see how black text with a 4 pixel rgb(230, 191, 155) colored shadow looks like.

```
.shadow{ text-shadow: 4px 4px 2px rgb(230, 191, 155) }
```

Border

The CSS property to change the border of an element to CIELCh 80, 25.009, 69.254 is called "border". The border property can be set on classes, ids or directly on the HTML element.

This example shows the color as border, it can be applied via the CSS property "border" or "border-color".

```
.border, #border, table{ border:4px solid rgb(230, 191, 155) }
```

If only the border color should be changed use the property `border-color`.

```
.border{ border-color:rgb(230, 191, 155) }
```

If you want to add a box shadow in that color use:

Here you see how a box with a 4 pixel `rgb(230, 191, 155)` colored shadow looks like.

```
.boxshadow{ -moz-box-shadow:4px 4px 4px  
4px rgb(230, 191, 155); -webkit-box-  
shadow:4px 4px 4px 4px rgb(230, 191, 155);  
box-shadow:4px 4px 4px 4px rgb(230, 191,  
155) }
```

Background

The CSS property to change the background color of an element to CIELCh 80, 25.009, 69.254 is called "background". The background property can be set on classes, ids or directly on the HTML element.

```
.background, #background, body{  
background: rgb(230, 191, 155) }
```

If only the background color should be changed can be used:

```
.background{ background-color: rgb(230,  
191, 155) }
```

This example shows the color as background, it is applied via the CSS property "background".

To optimize and compress your CSS code, you can use our [online CSS compressor and optimizer](#) based on csstidy. If you want to create a linear or radial gradient as background or border, check our [CSS Gradient Generator](#).

Hey! You found this booklet interesting? Support Converting Colors with the new Membership Option!

The pro membership hides all ads, plus gives you double the colors in the color bucket, and more awesome pro features!

[Learn more, Memberships starting at \\$2.50/m!](#)

**Follow me
on Twitter!**

@ConvertingColor