

Converting Colors

CIELCh(80, 27.086, 0.535)

Have a look what the booklet for
CIELCh(80, 27.086, 0.535) contains.

CIELCh(80, 27.039, 0.079)	3
<i>Conversions</i>	4
<i>Details</i>	6
<i>Harmonies</i>	11
<i>Previews</i>	20
<i>Color Blindness Simulation</i>	23
<i>CSS Examples</i>	26

Color

CIELCh(80, 27.039, 0.079)

Conversions

Conversions Part 1

Format	Color
Hex	F7B4C7
RGB	247, 180, 199
RGB Percent	97%, 71%, 78%
CMY	0.0305, 0.2932, 0.2187
CMYK	0.00, 0.27, 0.19, 0.03
HSL	343°, 81%, 84%
HSV	343°, 27%, 97%
XYZ	65.1400, 56.6813, 61.6746
YIQ	202.1990, 33.8330, 20.1130

Conversions

Conversions Part 2

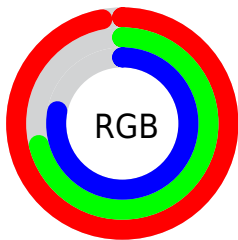
Format	Color
R _Y B	247, 180, 199
Decimal	16233671
CIE Lab	80.00, 27.04, 0.04
CIE LCh	80, 27.039, 0.079
Yxy	56.6813, 0.3550, 0.3089
Android (android.graphics.Color)	4294423751 (0xFF7B4C7)
YUV	202.1990, -1.5771, 39.2905
Hunter-Lab	75.2870, 22.6901, 4.1309

Details

The CIELCh color $80, 27.039, 0.079$ is a light color, and the websafe version is hex `FFCCCC`. A complement of this color would be $93, 24.822, 174.460$, and the grayscale version is $81, 0.010, 296.813$.

A 20% lighter version of the original color is $95, 11.855, 324.828$, and $60, 26.945, 0.716$ is the 20% darker color. If you saturate the color by 10%, you get $74, 37.510, 1.579$, and if you desaturate by 10%, it is $86, 16.753, 358.820$.

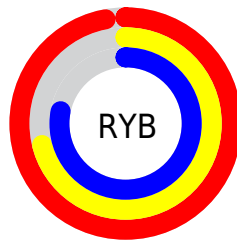
Distribution



Red (97%)

Green (71%)

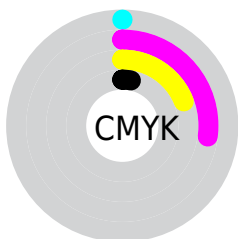
Blue (78%)



Red (97%)

Yellow (71%)

Blue (78%)

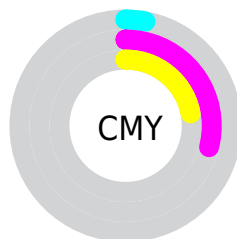


Cyan (0%)

Magenta (27%)

Yellow (19%)

Black (3%)



Cyan (3%)

Magenta (29%)

Yellow (22%)

Brightness & Saturation Gradients

These gradients show how the CIELCh color 80, 27.039, 0.079 changes by changing the brightness by 10 percent. The first figure shows a shift by +10% for each color and the second figure -10%.

Similar to the brightness gradients but the following saturation gradients show a change of the CIELCh color 80, 27.039, 0.079 by changing the saturation by 10% instead.

 80, 27.039, 0.079

 80, 27.039, 0.079

 100, 27.039, 0.079

 70, 27.039, 0.079

 60, 27.039, 0.079

 50, 27.039, 0.079

 40, 27.039, 0.079

 30, 27.039, 0.079

 20, 27.039, 0.079

 10, 27.039, 0.079

 0, 27.039, 0.079

 80, 27.039, 0.079

 80, 27.039, 0.079

74, 37.510, 1.579

86, 16.753,
358.820

69, 47.918, 3.399

93, 6.813, 357.704

64, 57.884, 5.662

99, 2.706, 177.070

59, 66.948, 8.522

99, 2.690, 199.481

56, 74.668, 12.154

54, 80.823, 16.698

52, 85.620, 22.121

52, 86.966, 23.725

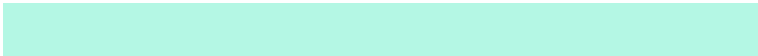
Harmonies

Complementary

The Complementary color scheme is a pair of colors which are on the opposite of each other on the color wheel.



80, 27.039, 0.079



93, 24.822, 174.460

Rectangle

The Rectangle color scheme consists of four colors that form a rectangle on the color wheel.



80, 27.039, 0.079



80, 27.039, 50.079



80, 27.039, 180.079



80, 27.039, 230.079

Sweetspot

The Sweet Spot groups the original color and five complimentary colors.



80, 27.036, 0.082



95, 7.883, 357.804



80, 39.224, 316.901



50, 5.621, 357.969



0, 0.000, 0.000



53, 0.007, 296.813

Same Dimension

The Same Dimension uses a secret algorithm to generate beautiful new colors.



80, 27.036, 0.082



79, 34.048, 0.939



83, 22.285, 39.192



48, 5.435, 357.965



39, 69.806, 22.619



9, 29.717, 12.242

Inverse Universe

The Inverse Universe completely reimagines the original color for something new.



80, 27.036, 0.082



79, 34.048, 0.939



89, 18.488, 220.682



48, 5.435, 357.965



39, 69.806, 22.619



9, 29.717, 12.242

Previews

White Background



This preview shows how the CIELCh color 80, 27.039, 0.079 looks on a white background.

Color Contrast Check

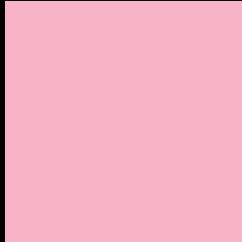
Large Text (above 18pt) WCAG AA × Fail

Any Text WCAG AA × Fail

Large Text (above 18pt) WCAG AAA × Fail

Any Text WCAG AAA × Fail

Black Background



This preview shows how the CIELCh color 80, 27.039, 0.079 looks on a black background.

Color Contrast Check

Large Text (above 18pt) WCAG AA ✓ Pass

Any Text WCAG AA ✓ Pass

Large Text (above 18pt) WCAG AAA ✓ Pass

Any Text WCAG AAA ✓ Pass

If you want to check with other color combinations, try the [Color Contrast Checker](#).

CIELCh 80, 27.039, 0.079

Background



This preview shows how black text looks on a background with the CIELCh color 80, 27.039, 0.079.

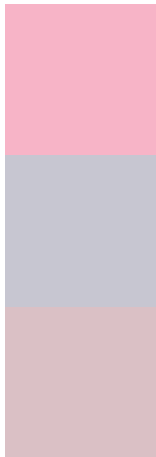


This preview shows how white text looks on a background with the CIELCh color 80, 27.039, 0.079.

Color Blindness Simulation

Color vision deficiency is a very complex topic, and I could not describe the different causes any better than Wikipedia does, so if you want to learn more, you should check out their [article about color blindness](#).


Dichromacy



Original Color
80, 27.039, 0.079

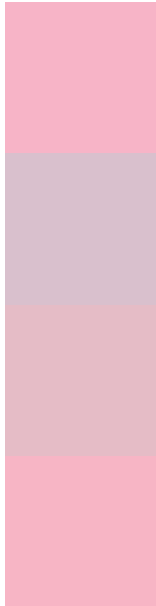
Protanopia
80, 5.880, 294.201

Deuteranopia
80, 10.065, 4.921



Tritanopia
80, 26.029, 5.253

Trichromacy



Original Color
80, 27.039, 0.079

Protanomaly
80, 11.525, 343.508

Deuteranomaly
80, 16.246, 1.758

Tritanomaly
80, 26.250, 3.006

Monochromacy



Original Color
80, 27.039, 0.079

Achromatopsia
81, 0.010, 296.813

Achromatomaly
81, 9.650, 357.549

CSS Examples

Text

The CSS property to change the color of the text to CIELCh 80, 27.039, 0.079 is called "color". The color property can be set on classes, ids or directly on the HTML element.

This example shows how text in the color `rgb(247, 180, 199)` looks like.

```
.text, #text, p{  
    color:rgb(247, 180, 199)  
}
```

If you want to add a text shadow in that color use the text-shadow property, you can generate a text shadow directly with our [CSS Text Shadow Generator](#).

Here you see how black text with a 4 pixel rgb(247, 180, 199) colored shadow looks like.

```
.shadow{ text-shadow: 4px 4px 2px rgb(247, 180, 199) }
```

Border

The CSS property to change the border of an element to CIELCh 80, 27.039, 0.079 is called "border". The border property can be set on classes, ids or directly on the HTML element.

This example shows the color as border, it can be applied via the CSS property "border" or "border-color".

```
.border, #border, table{ border:4px solid rgb(247, 180, 199) }
```

If only the border color should be changed use the property `border-color`.

```
.border{ border-color:rgb(247, 180, 199) }
```

If you want to add a box shadow in that color use:

Here you see how a box with a 4 pixel `rgb(247, 180, 199)` colored shadow looks like.

```
.boxshadow{ -moz-box-shadow:4px 4px 4px  
4px rgb(247, 180, 199); -webkit-box-  
shadow:4px 4px 4px 4px rgb(247, 180, 199);  
box-shadow:4px 4px 4px 4px rgb(247, 180,  
199) }
```

Background

The CSS property to change the background color of an element to CIELCh 80, 27.039, 0.079 is called "background". The background property can be set on classes, ids or directly on the HTML element.

```
.background, #background, body{  
background: rgb(247, 180, 199) }
```

If only the background color should be changed can be used:

```
.background{ background-color: rgb(247,  
180, 199) }
```

This example shows the color as background, it is applied via the CSS property "background".

To optimize and compress your CSS code, you can use our [online CSS compressor and optimizer](#) based on csstidy. If you want to create a linear or radial gradient as background or border, check our [CSS Gradient Generator](#).

Hey! You found this booklet interesting? Support Converting Colors with the new Membership Option!

The pro membership hides all ads, plus gives you double the colors in the color bucket, and more awesome pro features!

[Learn more, Memberships starting at \\$2.50/m!](#)

**Follow me
on Twitter!**

@ConvertingColor