

Converting Colors

CIELCh(80, 6.381, 357.503)

Have a look what the booklet for
CIELCh(80, 6.381, 357.503) contains.

CIELCh(80, 6.502, 355.738)	3
<i>Conversions</i>	4
<i>Details</i>	6
<i>Harmonies</i>	11
<i>Previews</i>	20
<i>Color Blindness Simulation</i>	23
<i>CSS Examples</i>	26

Color

CIELCh(80, 6.502, 355.738)

Conversions

Conversions Part 1

Format	Color
Hex	D2C2C7
RGB	210, 194, 199
RGB Percent	82%, 76%, 78%
CMY	0.1748, 0.2375, 0.2179
CMYK	0.00, 0.08, 0.05, 0.17
HSL	341°, 15%, 79%
HSV	341°, 8%, 83%
XYZ	56.4463, 56.6813, 62.2584
YIQ	199.3540, 7.9310, 4.9470

Conversions

Conversions Part 2

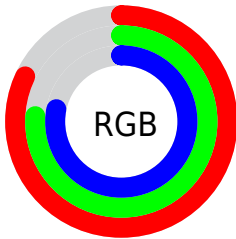
Format	Color
R_{YB}	210, 194, 199
Decimal	13812423
CIE _{Lab}	80.00, 6.48, -0.48
CIE _{LCh}	80, 6.502, 355.738
Yxy	56.6813, 0.3218, 0.3232
Android (android.graphics.Color)	4292002503 (0xFFD2C2C7)
YUV	199.3540, -0.1745, 9.3365
Hunter-Lab	75.2870, 2.0780, 3.6712

Details

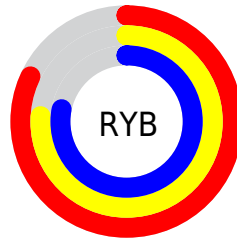
The CIELCh color $80, 6.502, 355.738$ is a light color, and the websafe version is hex `CCCCCC`. A complement of this color would be $83, 6.362, 174.493$, and the grayscale version is $81, 0.010, 296.813$.

A 20% lighter version of the original color is $99, 3.114, 324.451$, and $60, 6.543, 354.524$ is the 20% darker color. If you saturate the color by 10%, you get $74, 15.338, 356.845$, and if you desaturate by 10%, it is $86, 1.996, 175.150$.

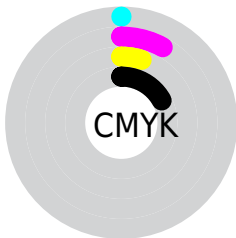
Distribution



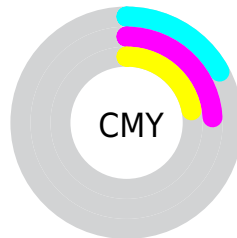
- Red (82%)
- Green (76%)
- Blue (78%)



- Red (82%)
- Yellow (76%)
- Blue (78%)



- Cyan (0%)
- Magenta (8%)
- Yellow (5%)
- Black (17%)



- Cyan (17%)
- Magenta (24%)
- Yellow (22%)

Brightness & Saturation Gradients

These gradients show how the CIELCh color 80, 6.502, 355.738 changes by changing the brightness by 10 percent. The first figure shows a shift by +10% for each color and the second figure -10%.

Similar to the brightness gradients but the following saturation gradients show a change of the CIELCh color 80, 6.502, 355.738 by changing the saturation by 10% instead.

80, 6.502, 355.738

80, 6.502, 355.738

100, 6.502,
355.738

70, 6.502, 355.738

60, 6.502, 355.738

50, 6.502, 355.738

40, 6.502, 355.738

30, 6.502, 355.738

20, 6.502, 355.738

10, 6.502, 355.738

0, 6.502, 355.738

80, 6.502, 355.738

80, 6.502, 355.738

74, 15.338,
356.845

86, 1.996, 175.150

69, 24.442,
358.081

92, 10.121,
174.137

64, 33.669,
359.537

97, 16.537,
176.239

59, 42.785, 1.296

97, 14.862,
198.516

55, 51.455, 3.470

51, 59.264, 6.204

48, 65.815, 9.671

46, 70.897, 14.028

45, 74.721, 19.264

Harmonies

Complementary

The Complementary color scheme is a pair of colors which are on the opposite of each other on the color wheel.



80, 6.502, 355.738



83, 6.362, 174.493

Rectangle

The Rectangle color scheme consists of four colors that form a rectangle on the color wheel.



80, 6.502, 355.738



80, 6.502, 45.738



80, 6.502, 175.738



80, 6.502, 225.738

Sweetspot

The Sweet Spot groups the original color and five complimentary colors.



80, 6.500, 355.748



99, 1.979, 355.008



80, 9.447, 315.499



53, 1.125, 354.984



0, 0.000, 0.000



53, 0.007, 296.813

Same Dimension

The Same Dimension uses a secret algorithm to generate beautiful new colors.



80, 6.500, 355.748



94, 9.016, 355.909



81, 5.105, 37.363



41, 4.842, 355.942



35, 63.738, 19.556



4, 20.543, 4.931

Inverse Universe

The Inverse Universe completely reimagines the original color for something new.



80, 6.500, 355.748



94, 9.016, 355.909



82, 4.870, 217.825



41, 4.842, 355.942



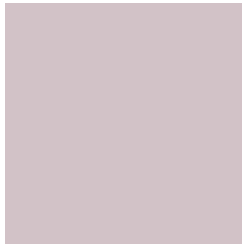
35, 63.738, 19.556



4, 20.543, 4.931

Previews

White Background



This preview shows how the CIELCh color 80, 6.502, 355.738 looks on a white background.

Color Contrast Check

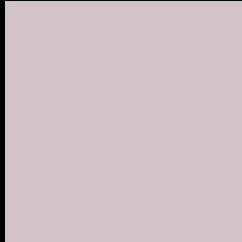
Large Text (above 18pt) WCAG AA × Fail

Any Text WCAG AA × Fail

Large Text (above 18pt) WCAG AAA × Fail

Any Text WCAG AAA × Fail

Black Background



This preview shows how the CIELCh color 80, 6.502, 355.738 looks on a black background.

Color Contrast Check

Large Text (above 18pt) WCAG AA ✓ Pass

Any Text WCAG AA ✓ Pass

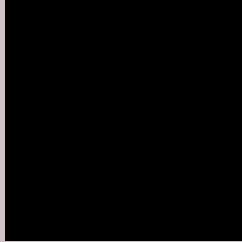
Large Text (above 18pt) WCAG AAA ✓ Pass

Any Text WCAG AAA ✓ Pass

If you want to check with other color combinations, try the [Color Contrast Checker](#).

CIELCh 80, 6.502, 355.738

Background



This preview shows how black text looks on a background with the CIELCh color 80, 6.502, 355.738.



This preview shows how white text looks on a background with the CIELCh color 80, 6.502, 355.738.

Color Blindness Simulation

Color vision deficiency is a very complex topic, and I could not describe the different causes any better than Wikipedia does, so if you want to learn more, you should check out their [article about color blindness](#).

Dichromacy



Original Color

80, 6.502, 355.738

Protanopia

80, 2.605, 324.451

Deuteranopia

80, 10.213, 355.647



Tritanopia
80, 10.613, 331.429

Trichromacy



Original Color
80, 6.502, 355.738

Protanomaly
80, 3.649, 343.857

Deuteranomaly
80, 8.973, 355.632

Tritanomaly
80, 8.578, 337.042

Monochromacy



Original Color
80, 6.502, 355.738

Achromatopsia
81, 0.010, 296.813

Achromatomaly
80, 2.459, 353.766

CSS Examples

Text

The CSS property to change the color of the text to CIELCh 80, 6.502, 355.738 is called "color". The color property can be set on classes, ids or directly on the HTML element.

This example shows how text in the color `rgb(210, 194, 199)` looks like.

```
.text, #text, p{  
    color:rgb(210, 194, 199)  
}
```

If you want to add a text shadow in that color use the text-shadow property, you can generate a text shadow directly with our [CSS Text Shadow Generator](#).

Here you see how black text with a 4 pixel rgb(210, 194, 199) colored shadow looks like.

```
.shadow{ text-shadow: 4px 4px 2px rgb(210, 194, 199) }
```

Border

The CSS property to change the border of an element to CIELCh 80, 6.502, 355.738 is called "border". The border property can be set on classes, ids or directly on the HTML element.

This example shows the color as border, it can be applied via the CSS property "border" or "border-color".

```
.border, #border, table{ border:4px solid rgb(210, 194, 199) }
```

If only the border color should be changed use the property `border-color`.

```
.border{ border-color:rgb(210, 194, 199) }
```

If you want to add a box shadow in that color use:

Here you see how a box with a 4 pixel `rgb(210, 194, 199)` colored shadow looks like.

```
.boxshadow{ -moz-box-shadow:4px 4px 4px  
4px rgb(210, 194, 199); -webkit-box-  
shadow:4px 4px 4px 4px rgb(210, 194, 199);  
box-shadow:4px 4px 4px 4px rgb(210, 194,  
199) }
```

Background

The CSS property to change the background color of an element to CIELCh 80, 6.502, 355.738 is called "background". The background property can be set on classes, ids or directly on the HTML element.

```
.background, #background, body{  
background: rgb(210, 194, 199) }
```

If only the background color should be changed can be used:

```
.background{ background-color: rgb(210,  
194, 199) }
```

This example shows the color as background, it is applied via the CSS property "background".

To optimize and compress your CSS code, you can use our [online CSS compressor and optimizer](#) based on csstidy. If you want to create a linear or radial gradient as background or border, check our [CSS Gradient Generator](#).

Hey! You found this booklet interesting? Support Converting Colors with the new Membership Option!

The pro membership hides all ads, plus gives you double the colors in the color bucket, and more awesome pro features!

[Learn more, Memberships starting at \\$2.50/m!](#)

**Follow me
on Twitter!**

@ConvertingColor