

Converting Colors

CIELCh(80, 6.444, 29.664)

Have a look what the booklet for
CIELCh(80, 6.444, 29.664) contains.

CIELCh(80, 6.447, 29.262)	3
<i>Conversions</i>	4
<i>Details</i>	6
<i>Harmonies</i>	11
<i>Previews</i>	20
<i>Color Blindness Simulation</i>	23
<i>CSS Examples</i>	26

Color

CIELCh(80, 6.447, 29.262)

Conversions

Conversions Part 1

Format	Color
Hex	D4C3C1
RGB	212, 195, 193
RGB Percent	83%, 76%, 76%
CMY	0.1698, 0.2365, 0.2443
CMYK	0.00, 0.08, 0.09, 0.17
HSL	6°, 18%, 79%
HSV	6°, 9%, 83%
XYZ	56.1006, 56.6813, 58.2579
YIQ	199.8550, 10.7740, 2.9820

Conversions

Conversions Part 2

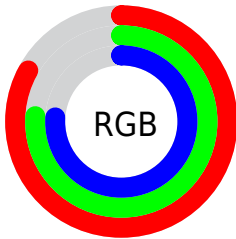
Format	Color
R _Y B	212, 195, 193
Decimal	13943745
CIE Lab	80.00, 5.62, 3.15
CIE LCh	80, 6.447, 29.262
Yxy	56.6813, 0.3280, 0.3314
Android (android.graphics.Color)	4292133825 (0xFFD4C3C1)
YUV	199.8550, -3.3795, 10.6512
Hunter-Lab	75.2870, 1.2584, 6.8216

Details

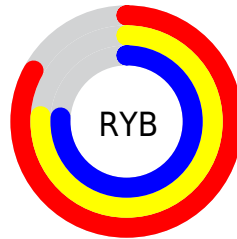
The CIELCh color $80, 6.447, 29.262$ is a light color, and the websafe version is hex `CCCCCC`. A complement of this color would be $83, 6.083, 209.116$, and the grayscale version is $80, 0.010, 296.813$.

A 20% lighter version of the original color is $99, 1.836, 74.893$, and $60, 6.397, 24.997$ is the 20% darker color. If you saturate the color by 10%, you get $75, 14.206, 29.694$, and if you desaturate by 10%, it is $85, 0.709, 209.961$.

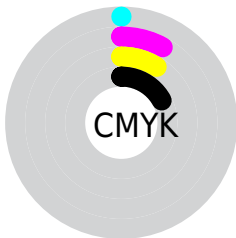
Distribution



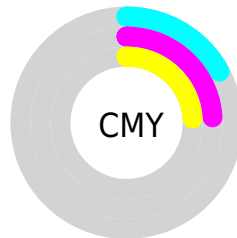
- Red (83%)
- Green (76%)
- Blue (76%)



- Red (83%)
- Yellow (76%)
- Blue (76%)



- Cyan (0%)
- Magenta (8%)
- Yellow (9%)
- Black (17%)



- Cyan (17%)
- Magenta (24%)
- Yellow (24%)

Brightness & Saturation Gradients

These gradients show how the CIELCh color 80, 6.447, 29.262 changes by changing the brightness by 10 percent. The first figure shows a shift by +10% for each color and the second figure -10%.

Similar to the brightness gradients but the following saturation gradients show a change of the CIELCh color 80, 6.447, 29.262 by changing the saturation by 10% instead.

80, 6.447, 29.262

80, 6.447, 29.262

100, 6.447, 29.262

70, 6.447, 29.262

60, 6.447, 29.262

50, 6.447, 29.262

40, 6.447, 29.262

30, 6.447, 29.262

20, 6.447, 29.262

10, 6.447, 29.262

0, 6.447, 29.262

80, 6.447, 29.262

80, 6.447, 29.262

75, 14.206, 29.694

85, 0.709, 209.961

70, 22.612, 30.252

91, 7.311, 209.096

65, 31.671, 31.036

96, 13.368,
206.349

60, 41.348, 32.112

97, 14.465,
198.542

56, 51.531, 33.544

52, 62.002, 35.362

49, 72.348, 37.487

47, 81.703, 39.554

45, 88.600, 40.947

Harmonies

Complementary

The Complementary color scheme is a pair of colors which are on the opposite of each other on the color wheel.



80, 6.447, 29.262



83, 6.083, 209.116

Rectangle

The Rectangle color scheme consists of four colors that form a rectangle on the color wheel.



80, 6.447, 29.262



80, 6.447, 79.262



80, 6.447, 209.262



80, 6.447, 259.262

Sweetspot

The Sweet Spot groups the original color and five complimentary colors.



80, 6.446, 29.281



98, 2.446, 28.949



80, 11.471, 327.763



52, 1.860, 29.025



0, 0.000, 0.000



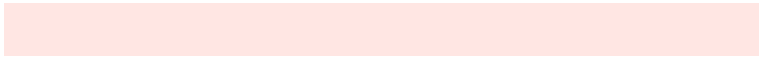
53, 0.007, 296.813

Same Dimension

The Same Dimension uses a secret algorithm to generate beautiful new colors.



80, 6.446, 29.281



93, 9.272, 29.365



82, 6.633, 84.241



42, 4.124, 29.299



36, 75.777, 41.322



6, 20.564, 25.180

Inverse Universe

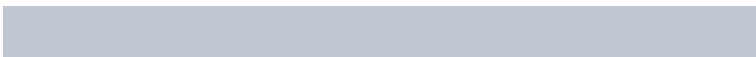
The Inverse Universe completely reimagines the original color for something new.



83, 6.083, 209.116



97, 8.624, 209.076



80, 6.585, 266.657



44, 3.880, 209.107



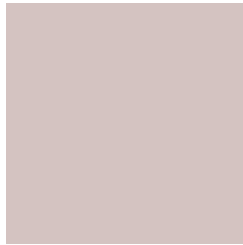
58, 32.945, 215.173



13, 13.120, 211.363

Previews

White Background



This preview shows how the CIELCh color 80, 6.447, 29.262 looks on a white background.

Color Contrast Check

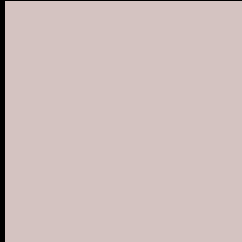
Large Text (above 18pt) WCAG AA × Fail

Any Text WCAG AA × Fail

Large Text (above 18pt) WCAG AAA × Fail

Any Text WCAG AAA × Fail

Black Background



This preview shows how the CIELCh color 80, 6.447, 29.262 looks on a black background.

Color Contrast Check

Large Text (above 18pt) WCAG AA ✓ Pass

Any Text WCAG AA ✓ Pass

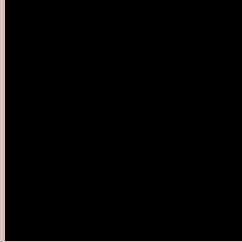
Large Text (above 18pt) WCAG AAA ✓ Pass

Any Text WCAG AAA ✓ Pass

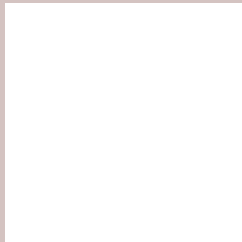
If you want to check with other color combinations, try the [Color Contrast Checker](#).

CIELCh 80, 6.447, 29.262

Background



This preview shows how black text looks on a background with the CIELCh color 80, 6.447, 29.262.



This preview shows how white text looks on a background with the CIELCh color 80, 6.447, 29.262.

Color Blindness Simulation

Color vision deficiency is a very complex topic, and I could not describe the different causes any better than Wikipedia does, so if you want to learn more, you should check out their [article about color blindness](#).

Dichromacy



Original Color

80, 6.447, 29.262

Protanopia

80, 2.800, 68.529

Deuteranopia

80, 10.174, 17.190



Tritanopia
80, 11.745, 333.862

Trichromacy



Original Color
80, 6.447, 29.262

Protanomaly
80, 3.691, 45.019

Deuteranomaly
80, 8.636, 20.027

Tritanomaly
80, 8.813, 347.207

Monochromacy



Original Color
80, 6.447, 29.262

Achromatopsia
81, 0.010, 296.813

Achromatomaly
80, 2.269, 32.846

CSS Examples

Text

The CSS property to change the color of the text to CIELCh 80, 6.447, 29.262 is called "color". The color property can be set on classes, ids or directly on the HTML element.

This example shows how text in the color `rgb(212, 195, 193)` looks like.

```
.text, #text, p{  
    color:rgb(212, 195, 193)  
}
```

If you want to add a text shadow in that color use the text-shadow property, you can generate a text shadow directly with our [CSS Text Shadow Generator](#).

Here you see how black text with a 4 pixel rgb(212, 195, 193) colored shadow looks like.

```
.shadow{ text-shadow: 4px 4px 2px rgb(212, 195, 193) }
```

Border

The CSS property to change the border of an element to CIELCh 80, 6.447, 29.262 is called "border". The border property can be set on classes, ids or directly on the HTML element.

This example shows the color as border, it can be applied via the CSS property "border" or "border-color".

```
.border, #border, table{ border:4px solid rgb(212, 195, 193) }
```

If only the border color should be changed use the property `border-color`.

```
.border{ border-color:rgb(212, 195, 193) }
```

If you want to add a box shadow in that color use:

Here you see how a box with a 4 pixel `rgb(212, 195, 193)` colored shadow looks like.

```
.boxshadow{ -moz-box-shadow:4px 4px 4px  
4px rgb(212, 195, 193); -webkit-box-  
shadow:4px 4px 4px 4px rgb(212, 195, 193);  
box-shadow:4px 4px 4px 4px rgb(212, 195,  
193) }
```

Background

The CSS property to change the background color of an element to CIELCh 80, 6.447, 29.262 is called "background". The background property can be set on classes, ids or directly on the HTML element.

```
.background, #background, body{  
background: rgb(212, 195, 193) }
```

If only the background color should be changed can be used:

```
.background{ background-color: rgb(212,  
195, 193) }
```

This example shows the color as background, it is applied via the CSS property "background".

To optimize and compress your CSS code, you can use our [online CSS compressor and optimizer](#) based on csstidy. If you want to create a linear or radial gradient as background or border, check our [CSS Gradient Generator](#).

Hey! You found this booklet interesting? Support Converting Colors with the new Membership Option!

The pro membership hides all ads, plus gives you double the colors in the color bucket, and more awesome pro features!

[Learn more, Memberships starting at \\$2.50/m!](#)

**Follow me
on Twitter!**

@ConvertingColor