

Converting Colors

CIELCh(80, 7.121, 14.979)

Have a look what the booklet for
CIELCh(80, 7.121, 14.979) contains.

CIELCh(80, 7.113, 15.624)	3
<i>Conversions</i>	4
<i>Details</i>	6
<i>Harmonies</i>	11
<i>Previews</i>	20
<i>Color Blindness Simulation</i>	23
<i>CSS Examples</i>	26

Color

CIELCh(80, 7.113, 15.624)

Conversions

Conversions Part 1

Format	Color
Hex	D5C2C3
RGB	213, 194, 195
RGB Percent	84%, 76%, 76%
CMY	0.1646, 0.2391, 0.2352
CMYK	0.00, 0.09, 0.08, 0.16
HSL	357°, 18%, 80%
HSV	357°, 9%, 84%
XYZ	56.5940, 56.6813, 59.5981
YIQ	199.7950, 11.0030, 4.3390

Conversions

Conversions Part 2

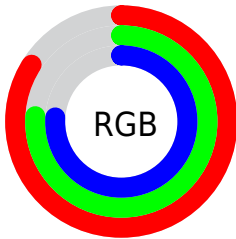
Format	Color
R _Y B	213, 194, 195
Decimal	14009027
CIE Lab	80.00, 6.85, 1.92
CIE LCh	80, 7.113, 15.624
Yxy	56.6813, 0.3274, 0.3279
Android (android.graphics.Color)	4292199107 (0xFFD5C2C3)
YUV	199.7950, -2.3639, 11.5808
Hunter-Lab	75.2870, 2.4280, 5.7662

Details

The CIELCh color **80, 7.113, 15.624** is a light color, and the websafe version is hex **CCCCCC**. A complement of this color would be **84, 6.759, 194.530**, and the grayscale version is **81, 0.010, 296.813**.

A 20% lighter version of the original color is **99, 2.044, 349.329**, and **60, 7.182, 15.593** is the 20% darker color. If you saturate the color by 10%, you get **74, 15.636, 16.597**, and if you desaturate by 10%, it is **86, 0.830, 195.669**.

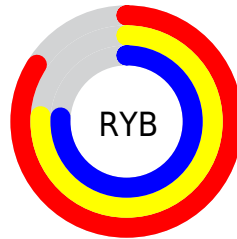
Distribution



Red (84%)

Green (76%)

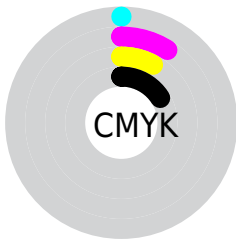
Blue (76%)



Red (84%)

Yellow (76%)

Blue (76%)

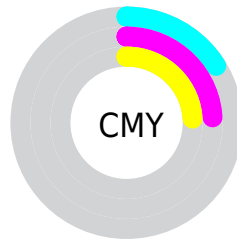


Cyan (0%)

Magenta (9%)

Yellow (8%)

Black (16%)



Cyan (16%)

Magenta (24%)

Yellow (24%)

Brightness & Saturation Gradients

These gradients show how the CIELCh color 80, 7.113, 15.624 changes by changing the brightness by 10 percent. The first figure shows a shift by +10% for each color and the second figure -10%.

Similar to the brightness gradients but the following saturation gradients show a change of the CIELCh color 80, 7.113, 15.624 by changing the saturation by 10% instead.

80, 7.113, 15.624

80, 7.113, 15.624

100, 7.113, 15.624

70, 7.113, 15.624

60, 7.113, 15.624

50, 7.113, 15.624

40, 7.113, 15.624

30, 7.113, 15.624

20, 7.113, 15.624

10, 7.113, 15.624

0, 7.113, 15.624

80, 7.113, 15.624

80, 7.113, 15.624

74, 15.636, 16.597

86, 0.830, 195.669

69, 24.739, 17.760

92, 8.215, 194.446

63, 34.357, 19.230

97, 14.043,
198.569

58, 44.349, 21.114

54, 54.478, 23.534

50, 64.427, 26.597

47, 73.829, 30.316

45, 82.201, 34.417

45, 88.627, 37.986

Harmonies

Complementary

The Complementary color scheme is a pair of colors which are on the opposite of each other on the color wheel.



80, 7.113, 15.624



84, 6.759, 194.530

Rectangle

The Rectangle color scheme consists of four colors that form a rectangle on the color wheel.



80, 7.113, 15.624



80, 7.113, 65.624



80, 7.113, 195.624



80, 7.113, 245.624

Sweetspot

The Sweet Spot groups the original color and five complimentary colors.



80, 7.111, 15.639



98, 2.711, 15.025



80, 12.022, 323.071



52, 2.061, 15.136



0, 0.000, 0.000



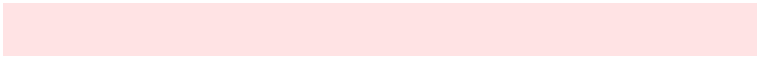
53, 0.007, 296.813

Same Dimension

The Same Dimension uses a secret algorithm to generate beautiful new colors.



80, 7.111, 15.639



92, 10.231, 15.839



82, 5.907, 66.818



42, 4.554, 15.685



35, 75.173, 37.740



5, 21.968, 17.428

Inverse Universe

The Inverse Universe completely reimagines the original color for something new.



80, 7.111, 15.639



92, 10.231, 15.839



82, 5.732, 249.009



42, 4.554, 15.685



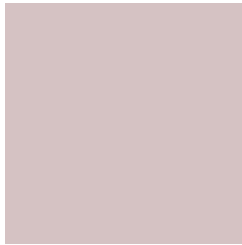
35, 75.173, 37.740



5, 21.968, 17.428

Previews

White Background



This preview shows how the CIELCh color 80, 7.113, 15.624 looks on a white background.

Color Contrast Check

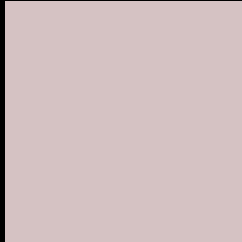
Large Text (above 18pt) WCAG AA × Fail

Any Text WCAG AA × Fail

Large Text (above 18pt) WCAG AAA × Fail

Any Text WCAG AAA × Fail

Black Background



This preview shows how the CIE LCh color 80, 7.113, 15.624 looks on a black background.

Color Contrast Check

Large Text (above 18pt) WCAG AA ✓ Pass

Any Text WCAG AA ✓ Pass

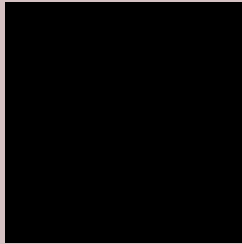
Large Text (above 18pt) WCAG AAA ✓ Pass

Any Text WCAG AAA ✓ Pass

If you want to check with other color combinations, try the [Color Contrast Checker](#).

CIELCh 80, 7.113, 15.624

Background



This preview shows how black text looks on a background with the CIELCh color 80, 7.113, 15.624.



This preview shows how white text looks on a background with the CIELCh color 80, 7.113, 15.624.

Color Blindness Simulation

Color vision deficiency is a very complex topic, and I could not describe the different causes any better than Wikipedia does, so if you want to learn more, you should check out their [article about color blindness](#).

Dichromacy



Original Color

80, 7.113, 15.624

Protanopia

80, 1.841, 19.252

Deuteranopia

80, 10.247, 11.275



Tritanopia
80, 11.633, 337.024

Trichromacy



Original Color
80, 7.113, 15.624

Protanomaly
80, 3.703, 19.547

Deuteranomaly
80, 9.049, 13.357

Tritanomaly
80, 9.409, 345.748

Monochromacy



Original Color
80, 7.113, 15.624

Achromatopsia
81, 0.010, 296.813

Achromatomaly
80, 2.580, 19.393

CSS Examples

Text

The CSS property to change the color of the text to CIELCh 80, 7.113, 15.624 is called "color". The color property can be set on classes, ids or directly on the HTML element.

This example shows how text in the color `rgb(213, 194, 195)` looks like.

```
.text, #text, p{  
    color:rgb(213, 194, 195)  
}
```

If you want to add a text shadow in that color use the text-shadow property, you can generate a text shadow directly with our [CSS Text Shadow Generator](#).

Here you see how black text with a 4 pixel rgb(213, 194, 195) colored shadow looks like.

```
.shadow{ text-shadow: 4px 4px 2px rgb(213, 194, 195) }
```

Border

The CSS property to change the border of an element to CIELCh 80, 7.113, 15.624 is called "border". The border property can be set on classes, ids or directly on the HTML element.

This example shows the color as border, it can be applied via the CSS property "border" or "border-color".

```
.border, #border, table{ border:4px solid rgb(213, 194, 195) }
```

If only the border color should be changed use the property `border-color`.

```
.border{ border-color:rgb(213, 194, 195) }
```

If you want to add a box shadow in that color use:

Here you see how a box with a 4 pixel `rgb(213, 194, 195)` colored shadow looks like.

```
.boxshadow{ -moz-box-shadow:4px 4px 4px  
4px rgb(213, 194, 195); -webkit-box-  
shadow:4px 4px 4px 4px rgb(213, 194, 195);  
box-shadow:4px 4px 4px 4px rgb(213, 194,  
195) }
```

Background

The CSS property to change the background color of an element to CIELCh 80, 7.113, 15.624 is called "background". The background property can be set on classes, ids or directly on the HTML element.

```
.background, #background, body{  
background: rgb(213, 194, 195) }
```

If only the background color should be changed can be used:

```
.background{ background-color: rgb(213,  
194, 195) }
```

This example shows the color as background, it is applied via the CSS property "background".

To optimize and compress your CSS code, you can use our [online CSS compressor and optimizer](#) based on csstidy. If you want to create a linear or radial gradient as background or border, check our [CSS Gradient Generator](#).

Hey! You found this booklet interesting? Support Converting Colors with the new Membership Option!

The pro membership hides all ads, plus gives you double the colors in the color bucket, and more awesome pro features!

[Learn more, Memberships starting at \\$2.50/m!](#)

**Follow me
on Twitter!**

@ConvertingColor