

Converting Colors

CIELCh(80, 7.189, 351.122)

Have a look what the booklet for
CIELCh(80, 7.189, 351.122) contains.

CIELCh(80, 7.312, 349.354)	3
<i>Conversions</i>	4
<i>Details</i>	6
<i>Harmonies</i>	11
<i>Previews</i>	20
<i>Color Blindness Simulation</i>	23
<i>CSS Examples</i>	26

Color

CIELCh(80, 7.312, 349.354)

Conversions

Conversions Part 1

Format	Color
Hex	D3C2C9
RGB	211, 194, 201
RGB Percent	83%, 76%, 79%
CMY	0.1723, 0.2390, 0.2116
CMYK	0.00, 0.08, 0.05, 0.17
HSL	335°, 16%, 79%
HSV	335°, 8%, 83%
XYZ	56.7297, 56.6813, 63.2397
YIQ	199.8810, 7.8850, 5.7810

Conversions

Conversions Part 2

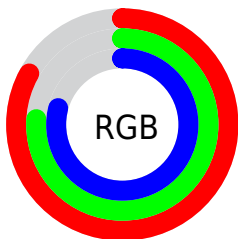
Format	Color
R _Y B	211, 194, 201
Decimal	13877961
CIE Lab	80.00, 7.19, -1.35
CIE LCh	80, 7.312, 349.354
Yxy	56.6813, 0.3211, 0.3209
Android (android.graphics.Color)	4292068041 (0xFFD3C2C9)
YUV	199.8810, 0.5517, 9.7514
Hunter-Lab	75.2870, 2.7498, 2.8984

Details

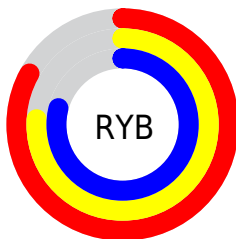
The CIELCh color $80, 7.312, 349.354$ is a light color, and the websafe version is hex `CCCCCC`. A complement of this color would be $83, 7.195, 168.056$, and the grayscale version is $81, 0.010, 296.813$.

A 20% lighter version of the original color is $99, 3.114, 324.451$, and $60, 7.418, 348.003$ is the 20% darker color. If you saturate the color by 10%, you get $74, 16.622, 350.388$, and if you desaturate by 10%, it is $86, 1.729, 168.806$.

Distribution



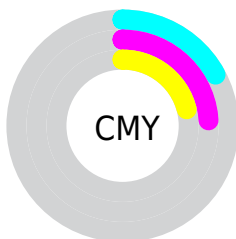
- Red (83%)
- Green (76%)
- Blue (79%)



- Red (83%)
- Yellow (76%)
- Blue (79%)



- Cyan (0%)
- Magenta (8%)
- Yellow (5%)
- Black (17%)



- Cyan (17%)
- Magenta (24%)
- Yellow (21%)

Brightness & Saturation Gradients

These gradients show how the CIELCh color 80, 7.312, 349.354 changes by changing the brightness by 10 percent. The first figure shows a shift by +10% for each color and the second figure -10%.

Similar to the brightness gradients but the following saturation gradients show a change of the CIELCh color 80, 7.312, 349.354 by changing the saturation by 10% instead.

■ 80, 7.312, 349.354

■ 80, 7.312, 349.354

■ 100, 7.312,
349.354

■ 70, 7.312, 349.354

■ 60, 7.312, 349.354

■ 50, 7.312, 349.354

■ 40, 7.312, 349.354

■ 30, 7.312, 349.354

■ 20, 7.312, 349.354

■ 10, 7.312, 349.354

■ 0, 7.312, 349.354

■ 80, 7.312, 349.354

■ 80, 7.312, 349.354

74, 16.622,
350.388

86, 1.729, 168.806

69, 26.107,
351.529

91, 10.443,
167.792

64, 35.589,
352.848

97, 17.498,
169.073

59, 44.793,
354.410

97, 14.996,
190.068

55, 53.337,
356.308

97, 14.667,
198.528

51, 60.758,
358.668

48, 66.607, 1.652

46, 70.619, 5.438

45, 73.013, 10.105

Harmonies

Complementary

The Complementary color scheme is a pair of colors which are on the opposite of each other on the color wheel.



80, 7.312, 349.354



83, 7.195, 168.056

Rectangle

The Rectangle color scheme consists of four colors that form a rectangle on the color wheel.



80, 7.312, 349.354



80, 7.312, 39.354



80, 7.312, 169.354



80, 7.312, 219.354

Sweetspot

The Sweet Spot groups the original color and five complimentary colors.



80, 7.310, 349.361



99, 2.100, 348.630



80, 9.791, 312.248



53, 1.194, 348.608



0, 0.000, 0.000



53, 0.007, 296.813

Same Dimension

The Same Dimension uses a secret algorithm to generate beautiful new colors.



80, 7.310, 349.361



93, 10.615, 349.568



80, 5.860, 27.114



41, 5.122, 349.497



36, 61.982, 10.147



5, 21.072, 359.432

Inverse Universe

The Inverse Universe completely reimagines the original color for something new.



80, 7.310, 349.361



93, 10.615, 349.568



83, 5.565, 206.857



41, 5.122, 349.497



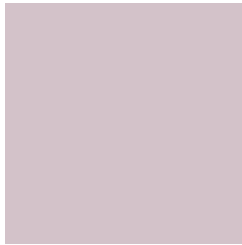
36, 61.982, 10.147



5, 21.072, 359.432

Previews

White Background



This preview shows how the CIELCh color 80, 7.312, 349.354 looks on a white background.

Color Contrast Check

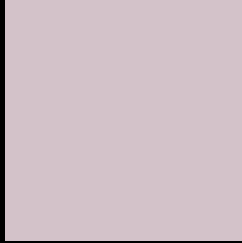
Large Text (above 18pt) WCAG AA × Fail

Any Text WCAG AA × Fail

Large Text (above 18pt) WCAG AAA × Fail

Any Text WCAG AAA × Fail

Black Background



This preview shows how the CIELCh color 80, 7.312, 349.354 looks on a black background.

Color Contrast Check

Large Text (above 18pt) WCAG AA ✓ Pass

Any Text WCAG AA ✓ Pass

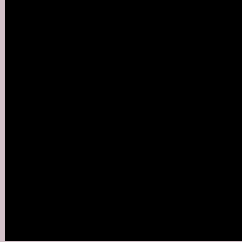
Large Text (above 18pt) WCAG AAA ✓ Pass

Any Text WCAG AAA ✓ Pass

If you want to check with other color combinations, try the [Color Contrast Checker](#).

CIELCh 80, 7.312, 349.354

Background



This preview shows how black text looks on a background with the CIELCh color 80, 7.312, 349.354.



This preview shows how white text looks on a background with the CIELCh color 80, 7.312, 349.354.

Color Blindness Simulation

Color vision deficiency is a very complex topic, and I could not describe the different causes any better than Wikipedia does, so if you want to learn more, you should check out their [article about color blindness](#).

Dichromacy



Original Color

80, 7.312, 349.354

Protanopia

80, 3.536, 314.741

Deuteranopia

80, 10.104, 351.968



Tritanopia
80, 10.613, 331.429

Trichromacy



Original Color
80, 7.312, 349.354

Protanomaly
80, 4.617, 335.893

Deuteranomaly
80, 8.868, 351.453

Tritanomaly
80, 9.482, 337.806

Monochromacy



Original Color
80, 7.312, 349.354

Achromatopsia
81, 0.010, 296.813

Achromatomaly
80, 2.459, 353.766

CSS Examples

Text

The CSS property to change the color of the text to CIELCh 80, 7.312, 349.354 is called "color". The color property can be set on classes, ids or directly on the HTML element.

This example shows how text in the color `rgb(211, 194, 201)` looks like.

```
.text, #text, p{  
    color:rgb(211, 194, 201)  
}
```

If you want to add a text shadow in that color use the text-shadow property, you can generate a text shadow directly with our [CSS Text Shadow Generator](#).

Here you see how black text with a 4 pixel rgb(211, 194, 201) colored shadow looks like.

```
.shadow{ text-shadow: 4px 4px 2px rgb(211, 194, 201) }
```

Border

The CSS property to change the border of an element to CIELCh 80, 7.312, 349.354 is called "border". The border property can be set on classes, ids or directly on the HTML element.

This example shows the color as border, it can be applied via the CSS property "border" or "border-color".

```
.border, #border, table{ border:4px solid rgb(211, 194, 201) }
```

If only the border color should be changed use the property `border-color`.

```
.border{ border-color:rgb(211, 194, 201) }
```

If you want to add a box shadow in that color use:

Here you see how a box with a 4 pixel `rgb(211, 194, 201)` colored shadow looks like.

```
.boxshadow{ -moz-box-shadow:4px 4px 4px  
4px rgb(211, 194, 201); -webkit-box-  
shadow:4px 4px 4px 4px rgb(211, 194, 201);  
box-shadow:4px 4px 4px 4px rgb(211, 194,  
201) }
```

Background

The CSS property to change the background color of an element to CIELCh 80, 7.312, 349.354 is called "background". The background property can be set on classes, ids or directly on the HTML element.

```
.background, #background, body{  
background: rgb(211, 194, 201) }
```

If only the background color should be changed can be used:

```
.background{ background-color: rgb(211,  
194, 201) }
```

This example shows the color as background, it is applied via the CSS property "background".

To optimize and compress your CSS code, you can use our [online CSS compressor and optimizer](#) based on csstidy. If you want to create a linear or radial gradient as background or border, check our [CSS Gradient Generator](#).

Hey! You found this booklet interesting? Support Converting Colors with the new Membership Option!

The pro membership hides all ads, plus gives you double the colors in the color bucket, and more awesome pro features!

[Learn more, Memberships starting at \\$2.50/m!](#)

**Follow me
on Twitter!**

@ConvertingColor