

Converting Colors

CIELCh(80, 7.266, 19.903)

Have a look what the booklet for
CIELCh(80, 7.266, 19.903) contains.

CIELCh(80, 7.104, 19.889)	3
<i>Conversions</i>	4
<i>Details</i>	6
<i>Harmonies</i>	11
<i>Previews</i>	20
<i>Color Blindness Simulation</i>	23
<i>CSS Examples</i>	26

Color

CIELCh(80, 7.104, 19.889)

Conversions

Conversions Part 1

Format	Color
Hex	D5C2C2
RGB	213, 194, 194
RGB Percent	84%, 76%, 76%
CMY	0.1644, 0.2389, 0.2389
CMYK	0.00, 0.09, 0.09, 0.16
HSL	0°, 18%, 80%
HSV	0°, 9%, 84%
XYZ	56.5254, 56.6813, 59.0521
YIQ	199.6810, 11.3240, 4.0280

Conversions

Conversions Part 2

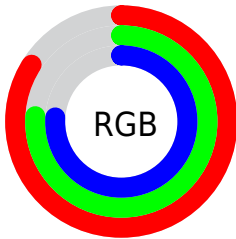
Format	Color
R _Y B	213, 194, 194
Decimal	14009026
CIE Lab	80.00, 6.68, 2.42
CIE LCh	80, 7.104, 19.889
Yxy	56.6813, 0.3281, 0.3290
Android (android.graphics.Color)	4292199106 (0xFFD5C2C2)
YUV	199.6810, -2.8007, 11.6808
Hunter-Lab	75.2870, 2.2655, 6.1961

Details

The CIELCh color **80, 7.104, 19.889** is a light color, and the websafe version is hex **CCCCCC**. A complement of this color would be **84, 6.715, 199.022**, and the grayscale version is **81, 0.010, 296.813**.

A 20% lighter version of the original color is **99, 1.759, 19.148**, and **60, 7.177, 20.067** is the 20% darker color. If you saturate the color by 10%, you get **74, 15.673, 20.746**, and if you desaturate by 10%, it is **86, 0.828, 200.067**.

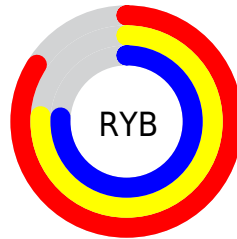
Distribution



Red (84%)

Green (76%)

Blue (76%)



Red (84%)

Yellow (76%)

Blue (76%)

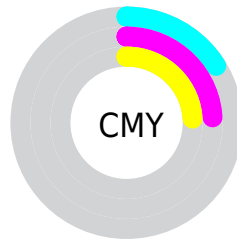


Cyan (0%)

Magenta (9%)

Yellow (9%)

Black (16%)



Cyan (16%)

Magenta (24%)

Yellow (24%)

Brightness & Saturation Gradients

These gradients show how the CIELCh color 80, 7.104, 19.889 changes by changing the brightness by 10 percent. The first figure shows a shift by +10% for each color and the second figure -10%.

Similar to the brightness gradients but the following saturation gradients show a change of the CIELCh color 80, 7.104, 19.889 by changing the saturation by 10% instead.

80, 7.104, 19.889

80, 7.104, 19.889

100, 7.104, 19.889

70, 7.104, 19.889

60, 7.104, 19.889

50, 7.104, 19.889

40, 7.104, 19.889

30, 7.104, 19.889

20, 7.104, 19.889

10, 7.104, 19.889

0, 7.104, 19.889

80, 7.104, 19.889

80, 7.104, 19.889

74, 15.673, 20.746

86, 0.828, 200.067

69, 24.895, 21.794

92, 8.159, 198.953

63, 34.726, 23.154

97, 14.021,
198.571

58, 45.044, 24.931

54, 55.627, 27.235

50, 66.148, 30.145

47, 76.148, 33.588

45, 84.792, 37.099

45, 90.710, 39.723

Harmonies

Complementary

The Complementary color scheme is a pair of colors which are on the opposite of each other on the color wheel.



80, 7.104, 19.889



84, 6.715, 199.022

Rectangle

The Rectangle color scheme consists of four colors that form a rectangle on the color wheel.



80, 7.104, 19.889



80, 7.104, 69.889



80, 7.104, 199.889



80, 7.104, 249.889

Sweetspot

The Sweet Spot groups the original color and five complimentary colors.



80, 7.102, 19.905



98, 2.702, 19.359



81, 12.274, 324.908



52, 2.054, 19.460



0, 0.000, 0.000



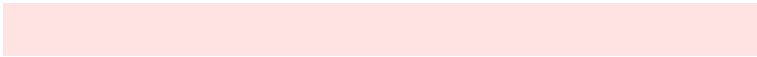
53, 0.007, 296.813

Same Dimension

The Same Dimension uses a secret algorithm to generate beautiful new colors.



80, 7.102, 19.905



92, 10.224, 20.079



82, 6.125, 74.274



42, 4.549, 19.945



35, 77.346, 39.901



5, 21.997, 19.776

Inverse Universe

The Inverse Universe completely reimagines the original color for something new.



84, 6.715, 199.022



98, 9.529, 198.890



81, 6.001, 256.636



44, 4.286, 198.991



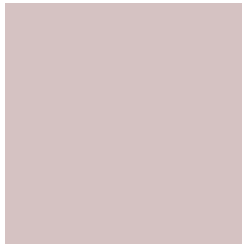
63, 37.112, 196.416



15, 14.555, 196.411

Previews

White Background



This preview shows how the CIELCh color 80, 7.104, 19.889 looks on a white background.

Color Contrast Check

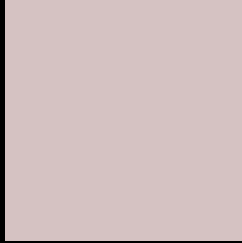
Large Text (above 18pt) WCAG AA × Fail

Any Text WCAG AA × Fail

Large Text (above 18pt) WCAG AAA × Fail

Any Text WCAG AAA × Fail

Black Background



This preview shows how the CIE LCh color 80, 7.104, 19.889 looks on a black background.

Color Contrast Check

Large Text (above 18pt) WCAG AA ✓ Pass

Any Text WCAG AA ✓ Pass

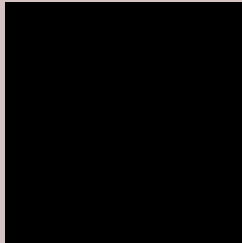
Large Text (above 18pt) WCAG AAA ✓ Pass

Any Text WCAG AAA ✓ Pass

If you want to check with other color combinations, try the [Color Contrast Checker](#).

CIELCh 80, 7.104, 19.889

Background



This preview shows how black text looks on a background with the CIELCh color 80, 7.104, 19.889.

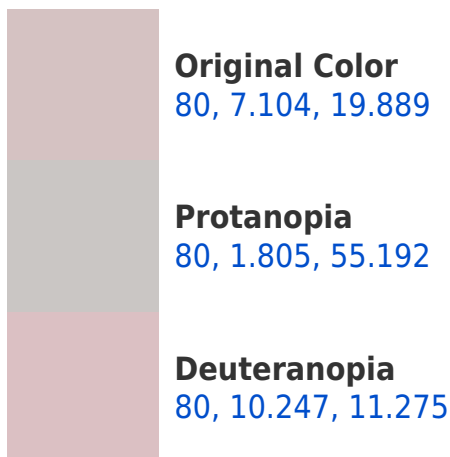


This preview shows how white text looks on a background with the CIELCh color 80, 7.104, 19.889.

Color Blindness Simulation

Color vision deficiency is a very complex topic, and I could not describe the different causes any better than Wikipedia does, so if you want to learn more, you should check out their [article about color blindness](#).

Dichromacy





Tritanopia
80, 11.633, 337.024

Trichromacy



Original Color
80, 7.104, 19.889

Protanomaly
80, 3.493, 37.167

Deuteranomaly
80, 9.049, 13.357

Tritanomaly
80, 9.127, 348.514

Monochromacy



Original Color
80, 7.104, 19.889

Achromatopsia
81, 0.010, 296.813

Achromatomaly
80, 2.580, 19.393

CSS Examples

Text

The CSS property to change the color of the text to CIELCh 80, 7.104, 19.889 is called "color". The color property can be set on classes, ids or directly on the HTML element.

This example shows how text in the color `rgb(213, 194, 194)` looks like.

```
.text, #text, p{  
    color:rgb(213, 194, 194)  
}
```

If you want to add a text shadow in that color use the text-shadow property, you can generate a text shadow directly with our [CSS Text Shadow Generator](#).

Here you see how black text with a 4 pixel rgb(213, 194, 194) colored shadow looks like.

```
.shadow{ text-shadow: 4px 4px 2px rgb(213, 194, 194) }
```

Border

The CSS property to change the border of an element to CIELCh 80, 7.104, 19.889 is called "border". The border property can be set on classes, ids or directly on the HTML element.

This example shows the color as border, it can be applied via the CSS property "border" or "border-color".

```
.border, #border, table{ border:4px solid rgb(213, 194, 194) }
```

If only the border color should be changed use the property `border-color`.

```
.border{ border-color:rgb(213, 194, 194) }
```

If you want to add a box shadow in that color use:

Here you see how a box with a 4 pixel `rgb(213, 194, 194)` colored shadow looks like.

```
.boxshadow{ -moz-box-shadow:4px 4px 4px  
4px rgb(213, 194, 194); -webkit-box-  
shadow:4px 4px 4px 4px rgb(213, 194, 194);  
box-shadow:4px 4px 4px 4px rgb(213, 194,  
194) }
```

Background

The CSS property to change the background color of an element to CIELCh 80, 7.104, 19.889 is called "background". The background property can be set on classes, ids or directly on the HTML element.

```
.background, #background, body{  
background: rgb(213, 194, 194) }
```

If only the background color should be changed can be used:

```
.background{ background-color: rgb(213,  
194, 194) }
```

This example shows the color as background, it is applied via the CSS property "background".

To optimize and compress your CSS code, you can use our [online CSS compressor and optimizer](#) based on csstidy. If you want to create a linear or radial gradient as background or border, check our [CSS Gradient Generator](#).

Hey! You found this booklet interesting? Support Converting Colors with the new Membership Option!

The pro membership hides all ads, plus gives you double the colors in the color bucket, and more awesome pro features!

[Learn more, Memberships starting at \\$2.50/m!](#)

**Follow me
on Twitter!**

@ConvertingColor