

Converting Colors

CIELCh(80, 7.841, 2.393)

Have a look what the booklet for
CIELCh(80, 7.841, 2.393) contains.

CIELCh(80, 7.736, 4.057)	3
<i>Conversions</i>	4
<i>Details</i>	6
<i>Harmonies</i>	11
<i>Previews</i>	20
<i>Color Blindness Simulation</i>	23
<i>CSS Examples</i>	26

Color

CIELCh(80, 7.736, 4.057)

Conversions

Conversions Part 1

Format	Color
Hex	D6C2C6
RGB	214, 194, 198
RGB Percent	84%, 76%, 78%
CMY	0.1625, 0.2409, 0.2252
CMYK	0.00, 0.09, 0.07, 0.16
HSL	348°, 19%, 80%
HSV	348°, 9%, 84%
XYZ	56.9444, 56.6813, 61.1061
YIQ	200.4360, 10.6360, 5.4840

Conversions

Conversions Part 2

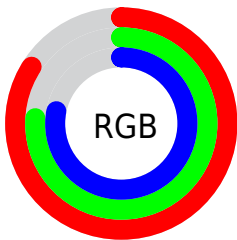
Format	Color
RYB	214, 194, 198
Decimal	14074566
CIELab	80.00, 7.72, 0.55
CIElCh	80, 7.736, 4.057
Yxy	56.6813, 0.3259, 0.3244
Android (android.graphics.Color)	4292264646 (0xFFD6C2C6)
YUV	200.4360, -1.2009, 11.8956
Hunter-Lab	75.2870, 3.2589, 4.5786

Details

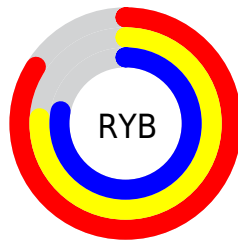
The CIELCh color **80, 7.736, 4.057** is a light color, and the websafe version is hex **CCCCCC**. A complement of this color would be **84, 7.453, 182.500**, and the grayscale version is **81, 0.010, 296.813**.

A 20% lighter version of the original color is **99, 3.114, 324.451**, and **60, 7.843, 3.519** is the 20% darker color. If you saturate the color by 10%, you get **74, 16.414, 5.196**, and if you desaturate by 10%, it is **86, 0.511, 184.256**.

Distribution



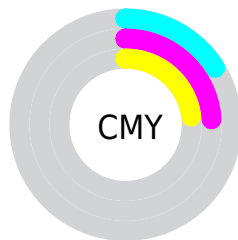
- Red (84%)
- Green (76%)
- Blue (78%)



- Red (84%)
- Yellow (76%)
- Blue (78%)



- Cyan (0%)
- Magenta (9%)
- Yellow (7%)
- Black (16%)



- Cyan (16%)
- Magenta (24%)
- Yellow (23%)

Brightness & Saturation Gradients

These gradients show how the CIELCh color 80, 7.736, 4.057 changes by changing the brightness by 10 percent. The first figure shows a shift by +10% for each color and the second figure -10%.

Similar to the brightness gradients but the following saturation gradients show a change of the CIELCh color 80, 7.736, 4.057 by changing the saturation by 10% instead.

80, 7.736, 4.057

80, 7.736, 4.057

100, 7.736, 4.057

70, 7.736, 4.057

60, 7.736, 4.057

50, 7.736, 4.057

40, 7.736, 4.057

30, 7.736, 4.057

20, 7.736, 4.057

10, 7.736, 4.057

0, 7.736, 4.057

80, 7.736, 4.057

80, 7.736, 4.057

74, 16.414, 5.196

86, 0.511, 184.256

69, 25.473, 6.512

92, 8.311, 182.469

63, 34.791, 8.107

97, 14.445,
185.883

59, 44.158, 10.082

97, 13.870,
198.580

54, 53.270, 12.568

51, 61.761, 15.719

48, 69.306, 19.674

46, 75.761, 24.460

45, 81.349, 29.719

Harmonies

Complementary

The Complementary color scheme is a pair of colors which are on the opposite of each other on the color wheel.



80, 7.736, 4.057



84, 7.453, 182.500

Rectangle

The Rectangle color scheme consists of four colors that form a rectangle on the color wheel.



80, 7.736, 4.057



80, 7.736, 54.057



80, 7.736, 184.057



80, 7.736, 234.057

Sweetspot

The Sweet Spot groups the original color and five complimentary colors.



80, 7.734, 4.068



98, 2.817, 3.315



80, 12.162, 319.206



52, 2.140, 3.436



0, 0.000, 0.000



53, 0.007, 296.813

Same Dimension

The Same Dimension uses a secret algorithm to generate beautiful new colors.



80, 7.734, 4.068



93, 10.545, 4.257



81, 6.111, 50.864



42, 4.702, 4.075



36, 68.640, 29.117



5, 22.055, 10.874

Inverse Universe

The Inverse Universe completely reimagines the original color for something new.



80, 7.734, 4.068



93, 10.545, 4.257



82, 5.813, 232.350



42, 4.702, 4.075



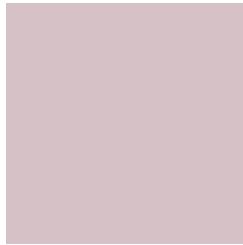
36, 68.640, 29.117



5, 22.055, 10.874

Previews

White Background



This preview shows how the CIELCh color 80, 7.736, 4.057 looks on a white background.

Color Contrast Check

Large Text (above 18pt) WCAG AA × Fail

Any Text WCAG AA × Fail

Large Text (above 18pt) WCAG AAA × Fail

Any Text WCAG AAA × Fail

Black Background



This preview shows how the CIELCh color 80, 7.736, 4.057 looks on a black background.

Color Contrast Check

Large Text (above 18pt) WCAG AA ✓ Pass

Any Text WCAG AA ✓ Pass

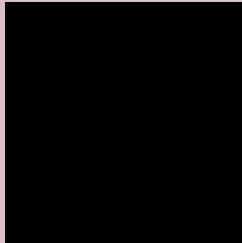
Large Text (above 18pt) WCAG AAA ✓ Pass

Any Text WCAG AAA ✓ Pass

If you want to check with other color combinations, try the [Color Contrast Checker](#).

CIELCh 80, 7.736, 4.057

Background



This preview shows how black text looks on a background with the CIELCh color 80, 7.736, 4.057.



This preview shows how white text looks on a background with the CIELCh color 80, 7.736, 4.057.

Color Blindness Simulation

Color vision deficiency is a very complex topic, and I could not describe the different causes any better than Wikipedia does, so if you want to learn more, you should check out their [article about color blindness](#).

Dichromacy



Original Color

80, 7.736, 4.057

Protanopia

80, 2.186, 332.319

Deuteranopia

80, 10.203, 2.037



Tritanopia
80, 11.633, 337.024

Trichromacy



Original Color

80, 7.736, 4.057

Protanomaly

80, 4.030, 356.287

Deuteranomaly

80, 8.967, 2.891

Tritanomaly

80, 9.713, 343.151

Monochromacy



Original Color

80, 7.736, 4.057

Achromatopsia

81, 0.010, 296.813

Achromatomaly

80, 2.636, 7.791

CSS Examples

Text

The CSS property to change the color of the text to CIELCh 80, 7.736, 4.057 is called "color". The color property can be set on classes, ids or directly on the HTML element.

This example shows how text in the color `rgb(214, 194, 198)` looks like.

```
.text, #text, p{  
    color:rgb(214, 194, 198)  
}
```

If you want to add a text shadow in that color use the text-shadow property, you can generate a text shadow directly with our [CSS Text Shadow Generator](#).

Here you see how black text with a 4 pixel rgb(214, 194, 198) colored shadow looks like.

```
.shadow{ text-shadow: 4px 4px 2px rgb(214, 194, 198) }
```

Border

The CSS property to change the border of an element to CIELCh 80, 7.736, 4.057 is called "border". The border property can be set on classes, ids or directly on the HTML element.

This example shows the color as border, it can be applied via the CSS property "border" or "border-color".

```
.border, #border, table{ border:4px solid rgb(214, 194, 198) }
```

If only the border color should be changed use the property `border-color`.

```
.border{ border-color:rgb(214, 194, 198) }
```

If you want to add a box shadow in that color use:

Here you see how a box with a 4 pixel `rgb(214, 194, 198)` colored shadow looks like.

```
.boxshadow{ -moz-box-shadow:4px 4px 4px  
4px rgb(214, 194, 198); -webkit-box-  
shadow:4px 4px 4px 4px rgb(214, 194, 198);  
box-shadow:4px 4px 4px 4px rgb(214, 194,  
198) }
```

Background

The CSS property to change the background color of an element to CIELCh 80, 7.736, 4.057 is called "background". The background property can be set on classes, ids or directly on the HTML element.

```
.background, #background, body{  
background: rgb(214, 194, 198) }
```

If only the background color should be changed can be used:

```
.background{ background-color: rgb(214,  
194, 198) }
```

This example shows the color as background, it is applied via the CSS property "background".

To optimize and compress your CSS code, you can use our [online CSS compressor and optimizer](#) based on csstidy. If you want to create a linear or radial gradient as background or border, check our [CSS Gradient Generator](#).

Hey! You found this booklet interesting? Support Converting Colors with the new Membership Option!

The pro membership hides all ads, plus gives you double the colors in the color bucket, and more awesome pro features!

[Learn more, Memberships starting at \\$2.50/m!](#)

**Follow me
on Twitter!**

@ConvertingColor