

Converting Colors

CIELCh(80, 8.952, 18.537)

Have a look what the booklet for
CIELCh(80, 8.952, 18.537) contains.

CIELCh(80, 9.019, 20.060)	3
<i>Conversions</i>	4
<i>Details</i>	6
<i>Harmonies</i>	11
<i>Previews</i>	20
<i>Color Blindness Simulation</i>	23
<i>CSS Examples</i>	26

Color

CIELCh(80, 9.019, 20.060)

Conversions

Conversions Part 1

Format	Color
Hex	D9C1C1
RGB	217, 193, 193
RGB Percent	85%, 76%, 76%
CMY	0.1494, 0.2435, 0.2435
CMYK	0.00, 0.11, 0.11, 0.15
HSL	0°, 24%, 80%
HSV	0°, 11%, 85%
XYZ	57.2511, 56.6813, 58.3201
YIQ	200.1760, 14.3040, 5.0880

Conversions

Conversions Part 2

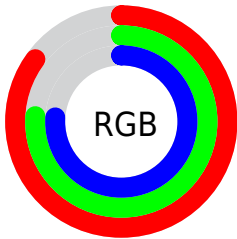
Format	Color
R _Y B	217, 193, 193
Decimal	14270913
CIE Lab	80.00, 8.47, 3.09
CIE LCh	80, 9.019, 20.060
Yxy	56.6813, 0.3324, 0.3291
Android (android.graphics.Color)	4292460993 (0xFFD9C1C1)
YUV	200.1760, -3.5378, 14.7546
Hunter-Lab	75.2870, 3.9859, 6.7726

Details

The CIELCh color $80, 9.019, 20.060$ is a light color, and the websafe version is hex `CCCCCC`. A complement of this color would be $85, 8.406, 198.888$, and the grayscale version is $81, 0.010, 296.813$.

A 20% lighter version of the original color is $98, 2.114, 19.235$, and $60, 9.222, 16.818$ is the 20% darker color. If you saturate the color by 10%, you get $74, 17.856, 20.948$, and if you desaturate by 10%, it is $86, 0.835, 18.782$.

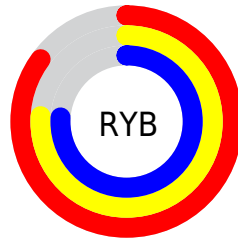
Distribution



Red (85%)

Green (76%)

Blue (76%)



Red (85%)

Yellow (76%)

Blue (76%)

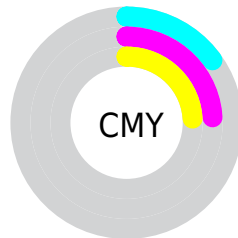


Cyan (0%)

Magenta (11%)

Yellow (11%)

Black (15%)



Cyan (15%)

Magenta (24%)

Yellow (24%)

Brightness & Saturation Gradients

These gradients show how the CIELCh color 80, 9.019, 20.060 changes by changing the brightness by 10 percent. The first figure shows a shift by +10% for each color and the second figure -10%.

Similar to the brightness gradients but the following saturation gradients show a change of the CIELCh color 80, 9.019, 20.060 by changing the saturation by 10% instead.

80, 9.019, 20.060

80, 9.019, 20.060

100, 9.019, 20.060

70, 9.019, 20.060

60, 9.019, 20.060

50, 9.019, 20.060

40, 9.019, 20.060

30, 9.019, 20.060

20, 9.019, 20.060

10, 9.019, 20.060

0, 9.019, 20.060

80, 9.019, 20.060

80, 9.019, 20.060

74, 17.856, 20.948

86, 0.835, 18.782

68, 27.353, 22.057

92, 6.729, 199.060

63, 37.449, 23.501

97, 12.801,
198.651

58, 47.999, 25.387

54, 58.754, 27.824

50, 69.357, 30.871

48, 79.292, 34.395

46, 87.546, 37.791

45, 92.549, 40.001

Harmonies

Complementary

The Complementary color scheme is a pair of colors which are on the opposite of each other on the color wheel.



80, 9.019, 20.060



85, 8.406, 198.888

Rectangle

The Rectangle color scheme consists of four colors that form a rectangle on the color wheel.



80, 9.019, 20.060



80, 9.019, 70.060



80, 9.019, 200.060



80, 9.019, 250.060

Sweetspot

The Sweet Spot groups the original color and five complimentary colors.



80, 9.017, 20.073



98, 2.702, 19.355



81, 15.469, 325.030



52, 2.054, 19.457



0, 0.000, 0.000



53, 0.007, 296.813

Same Dimension

The Same Dimension uses a secret algorithm to generate beautiful new colors.



80, 9.017, 20.073



91, 12.180, 20.239



83, 7.750, 74.021



43, 4.638, 19.943



36, 78.233, 39.930



5, 23.838, 20.276

Inverse Universe

The Inverse Universe completely reimagines the original color for something new.



85, 8.406, 198.888



98, 11.200, 198.771



82, 7.546, 256.930



45, 4.370, 198.985



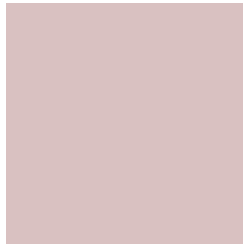
64, 37.523, 196.410



16, 15.071, 196.406

Previews

White Background



This preview shows how the CIELCh color 80, 9.019, 20.060 looks on a white background.

Color Contrast Check

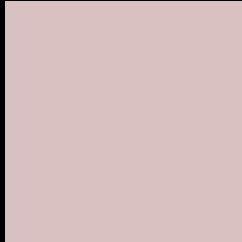
Large Text (above 18pt) WCAG AA × Fail

Any Text WCAG AA × Fail

Large Text (above 18pt) WCAG AAA × Fail

Any Text WCAG AAA × Fail

Black Background



This preview shows how the CIELCh color 80, 9.019, 20.060 looks on a black background.

Color Contrast Check

Large Text (above 18pt) WCAG AA ✓ Pass

Any Text WCAG AA ✓ Pass

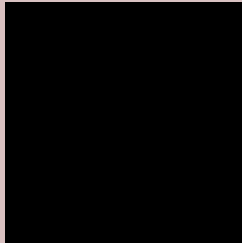
Large Text (above 18pt) WCAG AAA ✓ Pass

Any Text WCAG AAA ✓ Pass

If you want to check with other color combinations, try the [Color Contrast Checker](#).

CIELCh 80, 9.019, 20.060

Background



This preview shows how black text looks on a background with the CIELCh color 80, 9.019, 20.060.



This preview shows how white text looks on a background with the CIELCh color 80, 9.019, 20.060.

Color Blindness Simulation

Color vision deficiency is a very complex topic, and I could not describe the different causes any better than Wikipedia does, so if you want to learn more, you should check out their [article about color blindness](#).

Dichromacy



Original Color

80, 9.019, 20.060

Protanopia

80, 2.117, 49.341

Deuteranopia

80, 10.557, 17.332



Tritanopia
80, 13.041, 342.794

Trichromacy



Original Color
80, 9.019, 20.060

Protanomaly
80, 4.487, 26.412

Deuteranomaly
80, 10.174, 17.190

Tritanomaly
80, 10.768, 353.934

Monochromacy



Original Color
80, 9.019, 20.060

Achromatopsia
81, 0.010, 296.813

Achromatomaly
80, 3.326, 19.500

CSS Examples

Text

The CSS property to change the color of the text to CIELCh 80, 9.019, 20.060 is called "color". The color property can be set on classes, ids or directly on the HTML element.

This example shows how text in the color `rgb(217, 193, 193)` looks like.

```
.text, #text, p{  
    color:rgb(217, 193, 193)  
}
```

If you want to add a text shadow in that color use the text-shadow property, you can generate a text shadow directly with our [CSS Text Shadow Generator](#).

Here you see how black text with a 4 pixel rgb(217, 193, 193) colored shadow looks like.

```
.shadow{ text-shadow: 4px 4px 2px rgb(217, 193, 193) }
```

Border

The CSS property to change the border of an element to CIELCh 80, 9.019, 20.060 is called "border". The border property can be set on classes, ids or directly on the HTML element.

This example shows the color as border, it can be applied via the CSS property "border" or "border-color".

```
.border, #border, table{ border:4px solid rgb(217, 193, 193) }
```

If only the border color should be changed use the property `border-color`.

```
.border{ border-color:rgb(217, 193, 193) }
```

If you want to add a box shadow in that color use:

Here you see how a box with a 4 pixel `rgb(217, 193, 193)` colored shadow looks like.

```
.boxshadow{ -moz-box-shadow:4px 4px 4px  
4px rgb(217, 193, 193); -webkit-box-  
shadow:4px 4px 4px 4px rgb(217, 193, 193);  
box-shadow:4px 4px 4px 4px rgb(217, 193,  
193) }
```

Background

The CSS property to change the background color of an element to CIELCh 80, 9.019, 20.060 is called "background". The background property can be set on classes, ids or directly on the HTML element.

```
.background, #background, body{  
background: rgb(217, 193, 193) }
```

If only the background color should be changed can be used:

```
.background{ background-color: rgb(217,  
193, 193) }
```

This example shows the color as background, it is applied via the CSS property "background".

To optimize and compress your CSS code, you can use our [online CSS compressor and optimizer](#) based on csstidy. If you want to create a linear or radial gradient as background or border, check our [CSS Gradient Generator](#).

Hey! You found this booklet interesting? Support Converting Colors with the new Membership Option!

The pro membership hides all ads, plus gives you double the colors in the color bucket, and more awesome pro features!

[Learn more, Memberships starting at \\$2.50/m!](#)

**Follow me
on Twitter!**

@ConvertingColor