

Converting Colors

CIELCh(80, 81.126, 18.164)

Have a look what the booklet for
CIELCh(80, 81.126, 18.164) contains.

CIELCh(68, 52.412, 7.986)	3
<i>Conversions</i>	4
<i>Details</i>	6
<i>Harmonies</i>	11
<i>Previews</i>	20
<i>Color Blindness Simulation</i>	23
<i>CSS Examples</i>	26

Color

CIELCh(68, 52.412, 7.986)

Conversions

Conversions Part 1

Format	Color
Hex	FE7D9B
RGB	254, 125, 155
RGB Percent	100%, 49%, 61%
CMY	0.0054, 0.5107, 0.3929
CMYK	0.00, 0.51, 0.39, 0.01
HSL	346°, 98%, 74%
HSV	346°, 51%, 99%
XYZ	53.9440, 37.9720, 35.4171
YIQ	166.9910, 67.2540, 36.6780

Conversions

Conversions Part 2

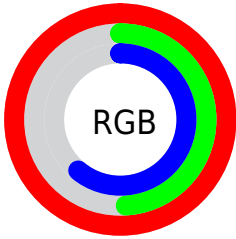
Format	Color
RYB	254, 125, 155
Decimal	16678299
CIELab	68.00, 51.90, 7.28
CIElCh	68, 52.412, 7.986
Yxy	37.9720, 0.4236, 0.2982
Android (android.graphics.Color)	4294868379 (0xFFFE7D9B)
YUV	166.9910, -5.9116, 76.3069
Hunter-Lab	61.6215, 48.4231, 9.0579

Details

The CIELCh color **68, 52.412, 7.986** is a light color, and the websafe version is hex **FF6699**. A complement of this color would be **92, 42.961, 175.413**, and the grayscale version is **68, 0.008, 296.813**.

A 20% lighter version of the original color is **81, 30.993, 353.834**, and **48, 52.384, 8.298** is the 20% darker color. If you saturate the color by 10%, you get **63, 62.561, 10.570**, and if you desaturate by 10%, it is **73, 41.781, 5.939**.

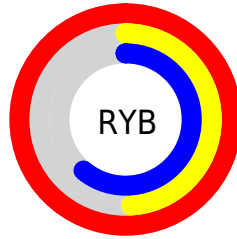
Distribution



Red (100%)

Green (49%)

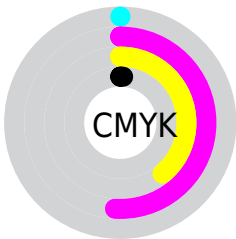
Blue (61%)



Red (100%)

Yellow (49%)

Blue (61%)

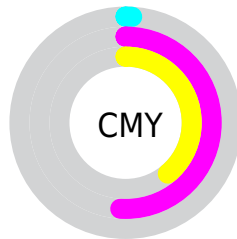


Cyan (0%)

Magenta (51%)

Yellow (39%)

Black (1%)



Cyan (1%)

Magenta (51%)

Yellow (39%)

Brightness & Saturation Gradients

These gradients show how the CIELCh color 68, 52.412, 7.986 changes by changing the brightness by 10 percent. The first figure shows a shift by +10% for each color and the second figure -10%.

Similar to the brightness gradients but the following saturation gradients show a change of the CIELCh color 68, 52.412, 7.986 by changing the saturation by 10% instead.

 68, 52.412, 7.986  68, 52.412, 7.986

 100, 52.412, 7.986  58, 52.412, 7.986

 88, 52.412, 7.986  48, 52.412, 7.986

 98, 52.412, 7.986  38, 52.412, 7.986


 28, 52.412, 7.986

 18, 52.412, 7.986

 8, 52.412, 7.986

 0, 52.412, 7.986

 68, 52.412, 7.986  68, 52.412, 7.986

 63, 62.561, 10.570  73, 41.781, 5.939

■ 59, 71.785, 13.849

■ 79, 31.071, 4.284

■ 56, 79.720, 17.976

■ 86, 20.564, 2.917

■ 54, 86.281, 22.985

■ 92, 10.431, 1.750

■ 53, 91.475, 28.059

■ 99, 0.759, 0.046

100, 0.476,
200.767

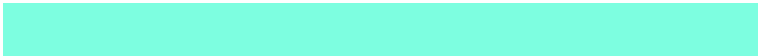
Harmonies

Complementary

The Complementary color scheme is a pair of colors which are on the opposite of each other on the color wheel.



68, 52.412, 7.986



92, 42.961, 175.413

Rectangle

The Rectangle color scheme consists of four colors that form a rectangle on the color wheel.



68, 52.412, 7.986



68, 52.412, 57.986



68, 52.412, 187.986



68, 52.412, 237.986

Sweetspot

The Sweet Spot groups the original color and five complimentary colors.



68, 52.409, 7.988



90, 14.698, 2.222



68, 75.642, 319.933



47, 10.077, 2.468



0, 0.000, 0.000



53, 0.007, 296.813

Same Dimension

The Same Dimension uses a secret algorithm to generate beautiful new colors.



68, 52.409, 7.988



63, 63.029, 10.633



74, 45.448, 45.881



50, 5.497, 1.608



40, 73.372, 27.013



10, 31.793, 16.970

Inverse Universe

The Inverse Universe completely reimagines the original color for something new.



68, 52.409, 7.988



63, 63.029, 10.633



83, 31.673, 233.249



50, 5.497, 1.608



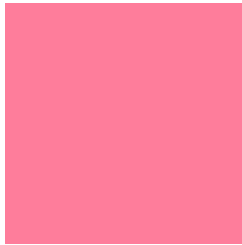
40, 73.372, 27.013



10, 31.793, 16.970

Previews

White Background



This preview shows how the CIELCh color 68, 52.412, 7.986 looks on a white background.

Color Contrast Check

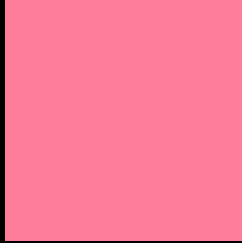
Large Text (above 18pt) WCAG AA × Fail

Any Text WCAG AA × Fail

Large Text (above 18pt) WCAG AAA × Fail

Any Text WCAG AAA × Fail

Black Background



This preview shows how the CIELCh color 68, 52.412, 7.986 looks on a black background.

Color Contrast Check

Large Text (above 18pt) WCAG AA ✓ Pass

Any Text WCAG AA ✓ Pass

Large Text (above 18pt) WCAG AAA ✓ Pass

Any Text WCAG AAA ✓ Pass

If you want to check with other color combinations, try the [Color Contrast Checker](#).

CIELCh 68, 52.412, 7.986

Background



This preview shows how black text looks on a background with the CIELCh color 68, 52.412, 7.986.

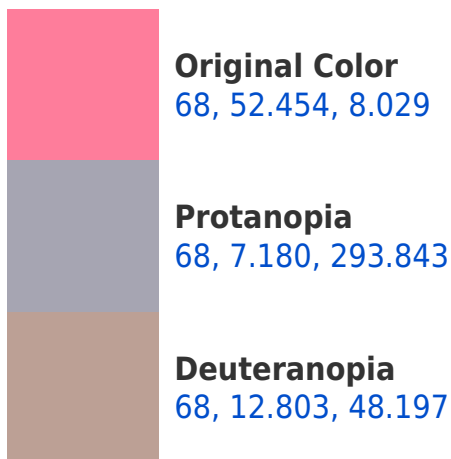


This preview shows how white text looks on a background with the CIELCh color 68, 52.412, 7.986.

Color Blindness Simulation

Color vision deficiency is a very complex topic, and I could not describe the different causes any better than Wikipedia does, so if you want to learn more, you should check out their [article about color blindness](#).

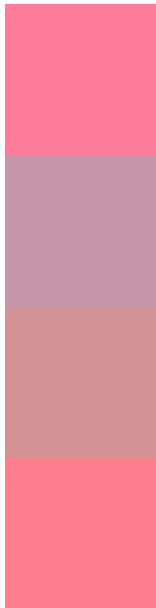
Dichromacy





Tritanopia
68, 50.974, 19.789

Trichromacy



Original Color
68, 52.454, 8.029

Protanomaly
67, 21.401, 350.751

Deuteranomaly
67, 26.260, 17.291

Tritanomaly
68, 51.336, 15.838

Monochromacy



Original Color
68, 52.454, 8.029

Achromatopsia
68, 0.008, 296.813

Achromatomaly
67, 19.285, 3.166

CSS Examples

Text

The CSS property to change the color of the text to CIELCh 68, 52.412, 7.986 is called "color". The color property can be set on classes, ids or directly on the HTML element.

This example shows how text in the color `rgb(254, 125, 155)` looks like.

```
.text, #text, p{  
    color:rgb(254, 125, 155)  
}
```

If you want to add a text shadow in that color use the text-shadow property, you can generate a text shadow directly with our [CSS Text Shadow Generator](#).

Here you see how black text with a 4 pixel rgb(254, 125, 155) colored shadow looks like.

```
.shadow{ text-shadow: 4px 4px 2px rgb(254, 125, 155) }
```

Border

The CSS property to change the border of an element to CIELCh 68, 52.412, 7.986 is called "border". The border property can be set on classes, ids or directly on the HTML element.

This example shows the color as border, it can be applied via the CSS property "border" or "border-color".

```
.border, #border, table{ border:4px solid rgb(254, 125, 155) }
```

If only the border color should be changed use the property `border-color`.

```
.border{ border-color:rgb(254, 125, 155) }
```

If you want to add a box shadow in that color use:

Here you see how a box with a 4 pixel `rgb(254, 125, 155)` colored shadow looks like.

```
.boxshadow{ -moz-box-shadow:4px 4px 4px  
4px rgb(254, 125, 155); -webkit-box-  
shadow:4px 4px 4px 4px rgb(254, 125, 155);  
box-shadow:4px 4px 4px 4px rgb(254, 125,  
155) }
```

Background

The CSS property to change the background color of an element to CIELCh 68, 52.412, 7.986 is called "background". The background property can be set on classes, ids or directly on the HTML element.

```
.background, #background, body{  
background: rgb(254, 125, 155) }
```

If only the background color should be changed can be used:

```
.background{ background-color: rgb(254,  
125, 155) }
```

This example shows the color as background, it is applied via the CSS property "background".

To optimize and compress your CSS code, you can use our [online CSS compressor and optimizer](#) based on csstidy. If you want to create a linear or radial gradient as background or border, check our [CSS Gradient Generator](#).

Hey! You found this booklet interesting? Support Converting Colors with the new Membership Option!

The pro membership hides all ads, plus gives you double the colors in the color bucket, and more awesome pro features!

[Learn more, Memberships starting at \\$2.50/m!](#)

**Follow me
on Twitter!**

@ConvertingColor