

Converting Colors

CIELCh(80, 9.026, 57.072)

Have a look what the booklet for
CIELCh(80, 9.026, 57.072) contains.

CIELCh(80, 8.971, 55.951)	3
<i>Conversions</i>	4
<i>Details</i>	6
<i>Harmonies</i>	11
<i>Previews</i>	20
<i>Color Blindness Simulation</i>	23
<i>CSS Examples</i>	26

Color

CIELCh(80, 8.971, 55.951)

Conversions

Conversions Part 1

Format	Color
Hex	D6C3B9
RGB	214, 195, 185
RGB Percent	84%, 76%, 73%
CMY	0.1617, 0.2362, 0.2754
CMYK	0.00, 0.09, 0.14, 0.16
HSL	21°, 26%, 78%
HSV	21°, 14%, 84%
XYZ	55.8596, 56.6813, 53.7695
YIQ	199.5410, 14.5340, 0.9180

Conversions

Conversions Part 2

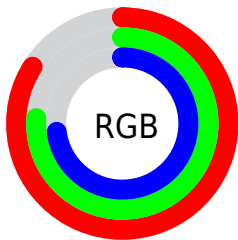
Format	Color
R _Y B	214, 200, 185
Decimal	14074809
CIE Lab	80.00, 5.02, 7.43
CIE LCh	80, 8.971, 55.951
Yxy	56.6813, 0.3359, 0.3408
Android (android.graphics.Color)	4292264889 (0xFFD6C3B9)
YUV	199.5410, -7.1687, 12.6805
Hunter-Lab	75.2870, 0.6870, 10.3563

Details

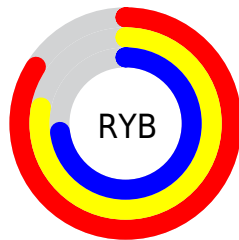
The CIELCh color $80, 8.971, 55.951$ is a light color, and the websafe version is hex `CCCCCC`. A complement of this color would be $81, 8.387, 238.527$, and the grayscale version is $80, 0.010, 296.813$.

A 20% lighter version of the original color is $99, 5.669, 98.867$, and $60, 8.927, 54.365$ is the 20% darker color. If you saturate the color by 10%, you get $76, 16.153, 55.212$, and if you desaturate by 10%, it is $84, 2.273, 56.623$.

Distribution



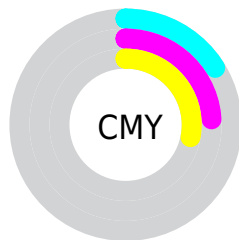
- Red (84%)
- Green (76%)
- Blue (73%)



- Red (84%)
- Yellow (78%)
- Blue (73%)



- Cyan (0%)
- Magenta (9%)
- Yellow (14%)
- Black (16%)



- Cyan (16%)
- Magenta (24%)
- Yellow (28%)

Brightness & Saturation Gradients

These gradients show how the CIELCh color 80, 8.971, 55.951 changes by changing the brightness by 10 percent. The first figure shows a shift by +10% for each color and the second figure -10%.

Similar to the brightness gradients but the following saturation gradients show a change of the CIELCh color 80, 8.971, 55.951 by changing the saturation by 10% instead.

80, 8.971, 55.951

80, 8.971, 55.951

100, 8.971, 55.951

70, 8.971, 55.951

60, 8.971, 55.951

50, 8.971, 55.951

40, 8.971, 55.951

30, 8.971, 55.951

20, 8.971, 55.951

10, 8.971, 55.951

0, 8.971, 55.951

80, 8.971, 55.951

80, 8.971, 55.951

76, 16.153, 55.212

84, 2.273, 56.623

72, 23.863, 54.500

88, 3.989, 237.819

68, 32.127, 53.858

92, 9.864, 238.601

65, 40.939, 53.297

96, 12.521,
208.668

61, 50.222, 52.807

97, 13.806,
198.585

58, 59.749, 52.325

55, 68.993, 51.673

52, 76.887, 50.455

51, 81.042, 49.418

Harmonies

Complementary

The Complementary color scheme is a pair of colors which are on the opposite of each other on the color wheel.



80, 8.971, 55.951



81, 8.387, 238.527

Rectangle

The Rectangle color scheme consists of four colors that form a rectangle on the color wheel.



80, 8.971, 55.951



80, 8.971, 105.951



80, 8.971, 235.951



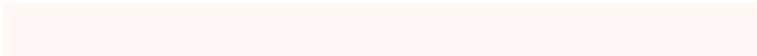
80, 8.971, 285.951

Sweetspot

The Sweet Spot groups the original color and five complimentary colors.



80, 8.971, 55.967



98, 2.950, 56.610



78, 14.864, 336.611



52, 2.103, 56.578



0, 0.000, 0.000



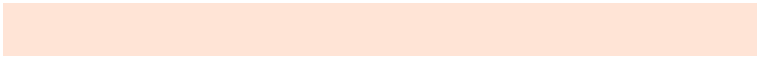
53, 0.007, 296.813

Same Dimension

The Same Dimension uses a secret algorithm to generate beautiful new colors.



80, 8.971, 55.967



92, 12.324, 55.769



84, 12.810, 100.821



43, 3.705, 56.278



41, 68.197, 49.981



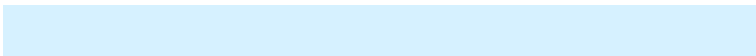
8, 17.870, 41.882

Inverse Universe

The Inverse Universe completely reimagines the original color for something new.



81, 8.387, 238.527



94, 11.359, 238.819



77, 13.049, 283.978



43, 3.543, 238.106



45, 39.063, 263.697



9, 13.813, 252.377

Previews

White Background



This preview shows how the CIELCh color 80, 8.971, 55.951 looks on a white background.

Color Contrast Check

Large Text (above 18pt) WCAG AA × Fail

Any Text WCAG AA × Fail

Large Text (above 18pt) WCAG AAA × Fail

Any Text WCAG AAA × Fail

Black Background



This preview shows how the CIE LCh color 80, 8.971, 55.951 looks on a black background.

Color Contrast Check

Large Text (above 18pt) WCAG AA ✓ Pass

Any Text WCAG AA ✓ Pass

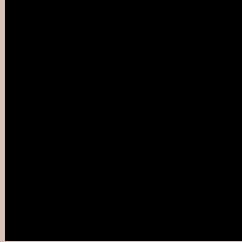
Large Text (above 18pt) WCAG AAA ✓ Pass

Any Text WCAG AAA ✓ Pass

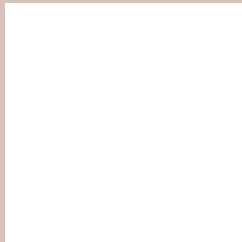
If you want to check with other color combinations, try the [Color Contrast Checker](#).

CIELCh 80, 8.971, 55.951

Background



This preview shows how black text looks on a background with the CIELCh color 80, 8.971, 55.951.



This preview shows how white text looks on a background with the CIELCh color 80, 8.971, 55.951.

Color Blindness Simulation

Color vision deficiency is a very complex topic, and I could not describe the different causes any better than Wikipedia does, so if you want to learn more, you should check out their [article about color blindness](#).

Dichromacy



Original Color

80, 8.971, 55.951

Protanopia

80, 6.876, 87.017

Deuteranopia

80, 12.090, 38.013



Tritanopia
80, 12.176, 339.479

Trichromacy



Original Color
80, 8.971, 55.951

Protanomaly
80, 7.152, 74.082

Deuteranomaly
80, 10.817, 43.077

Tritanomaly
80, 9.127, 359.698

Monochromacy



Original Color
80, 8.971, 55.951

Achromatopsia
80, 0.010, 296.813

Achromatomaly
80, 3.032, 51.068

CSS Examples

Text

The CSS property to change the color of the text to CIELCh 80, 8.971, 55.951 is called "color". The color property can be set on classes, ids or directly on the HTML element.

This example shows how text in the color `rgb(214, 195, 185)` looks like.

```
.text, #text, p{  
    color:rgb(214, 195, 185)  
}
```

If you want to add a text shadow in that color use the text-shadow property, you can generate a text shadow directly with our [CSS Text Shadow Generator](#).

Here you see how black text with a 4 pixel rgb(214, 195, 185) colored shadow looks like.

```
.shadow{ text-shadow: 4px 4px 2px rgb(214, 195, 185) }
```

Border

The CSS property to change the border of an element to CIELCh 80, 8.971, 55.951 is called "border". The border property can be set on classes, ids or directly on the HTML element.

This example shows the color as border, it can be applied via the CSS property "border" or "border-color".

```
.border, #border, table{ border:4px solid rgb(214, 195, 185) }
```

If only the border color should be changed use the property `border-color`.

```
.border{ border-color:rgb(214, 195, 185) }
```

If you want to add a box shadow in that color use:

Here you see how a box with a 4 pixel `rgb(214, 195, 185)` colored shadow looks like.

```
.boxshadow{ -moz-box-shadow:4px 4px 4px  
4px rgb(214, 195, 185); -webkit-box-  
shadow:4px 4px 4px 4px rgb(214, 195, 185);  
box-shadow:4px 4px 4px 4px rgb(214, 195,  
185) }
```

Background

The CSS property to change the background color of an element to CIELCh 80, 8.971, 55.951 is called "background". The background property can be set on classes, ids or directly on the HTML element.

```
.background, #background, body{  
background: rgb(214, 195, 185) }
```

If only the background color should be changed can be used:

```
.background{ background-color: rgb(214,  
195, 185) }
```

This example shows the color as background, it is applied via the CSS property "background".

To optimize and compress your CSS code, you can use our [online CSS compressor and optimizer](#) based on csstidy. If you want to create a linear or radial gradient as background or border, check our [CSS Gradient Generator](#).

Hey! You found this booklet interesting? Support Converting Colors with the new Membership Option!

The pro membership hides all ads, plus gives you double the colors in the color bucket, and more awesome pro features!

[Learn more, Memberships starting at \\$2.50/m!](#)

**Follow me
on Twitter!**

@ConvertingColor