

Converting Colors

CIELCh(80, 9.055, 28.514)

Have a look what the booklet for
CIELCh(80, 9.055, 28.514) contains.

CIELCh(80, 9.115, 26.713)	3
<i>Conversions</i>	4
<i>Details</i>	6
<i>Harmonies</i>	11
<i>Previews</i>	20
<i>Color Blindness Simulation</i>	23
<i>CSS Examples</i>	26

Color

CIELCh(80, 9.115, 26.713)

Conversions

Conversions Part 1

Format	Color
Hex	D9C1BF
RGB	217, 193, 191
RGB Percent	85%, 76%, 75%
CMY	0.1488, 0.2429, 0.2508
CMYK	0.00, 0.11, 0.12, 0.15
HSL	5°, 26%, 80%
HSV	5°, 12%, 85%
XYZ	57.1171, 56.6813, 57.2454
YIQ	199.9480, 14.9460, 4.4660

Conversions

Conversions Part 2

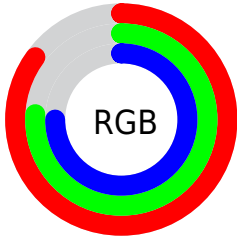
Format	Color
R_{YB}	217, 193, 191
Decimal	14270911
CIE Lab	80.00, 8.14, 4.10
CIE LCh	80, 9.115, 26.713
Yxy	56.6813, 0.3339, 0.3314
Android (android.graphics.Color)	4292460991 (0xFFD9C1BF)
YUV	199.9480, -4.4114, 14.9546
Hunter-Lab	75.2870, 3.6682, 7.6190

Details

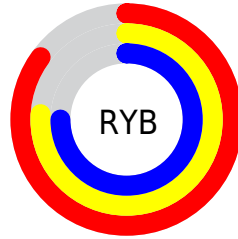
The CIELCh color **80, 9.115, 26.713** is a light color, and the websafe version is hex **CCCCCC**. A complement of this color would be **84, 8.427, 206.103**, and the grayscale version is **81, 0.010, 296.813**.

A 20% lighter version of the original color is **98, 2.338, 45.008**, and **60, 9.272, 23.748** is the 20% darker color. If you saturate the color by 10%, you get **75, 17.424, 27.303**, and if you desaturate by 10%, it is **86, 1.446, 25.998**.

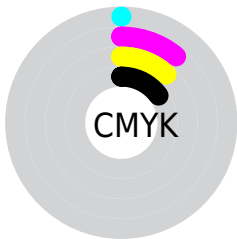
Distribution



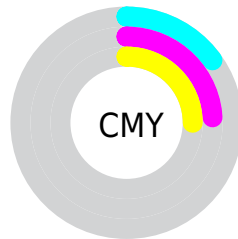
- Red (85%)
- Green (76%)
- Blue (75%)



- Red (85%)
- Yellow (76%)
- Blue (75%)



- Cyan (0%)
- Magenta (11%)
- Yellow (12%)
- Black (15%)



- Cyan (15%)
- Magenta (24%)
- Yellow (25%)

Brightness & Saturation Gradients

These gradients show how the CIELCh color 80, 9.115, 26.713 changes by changing the brightness by 10 percent. The first figure shows a shift by +10% for each color and the second figure -10%.


Similar to the brightness gradients but the following saturation gradients show a change of the CIELCh color 80, 9.115, 26.713 by changing the saturation by 10% instead.

 80, 9.115, 26.713

 80, 9.115, 26.713

 100, 9.115, 26.713

 70, 9.115, 26.713

 60, 9.115, 26.713


 50, 9.115, 26.713

 40, 9.115, 26.713

 30, 9.115, 26.713

 20, 9.115, 26.713

 10, 9.115, 26.713

 0, 9.115, 26.713

 80, 9.115, 26.713

 80, 9.115, 26.713

75, 17.424, 27.303

86, 1.446, 25.998

69, 26.401, 28.072

91, 5.628, 206.249

64, 36.030, 29.114

97, 12.144,
203.201

59, 46.232, 30.504

97, 12.756,
198.654

55, 56.838, 32.314

52, 67.554, 34.560

49, 77.844, 37.098

47, 86.569, 39.383

46, 91.532, 40.718

Harmonies

Complementary

The Complementary color scheme is a pair of colors which are on the opposite of each other on the color wheel.



80, 9.115, 26.713



84, 8.427, 206.103

Rectangle

The Rectangle color scheme consists of four colors that form a rectangle on the color wheel.



80, 9.115, 26.713



80, 9.115, 76.713



80, 9.115, 206.713



80, 9.115, 256.713

Sweetspot

The Sweet Spot groups the original color and five complimentary colors.



80, 9.114, 26.727



97, 3.357, 26.276



80, 16.021, 326.945



52, 2.393, 26.335



0, 0.000, 0.000



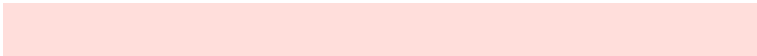
53, 0.007, 296.813

Same Dimension

The Same Dimension uses a secret algorithm to generate beautiful new colors.



80, 9.114, 26.727



91, 12.246, 26.839



83, 8.830, 80.720



43, 4.310, 26.597



36, 77.159, 40.867



6, 22.643, 24.171

Inverse Universe

The Inverse Universe completely reimagines the original color for something new.



84, 8.427, 206.103



97, 11.155, 206.048



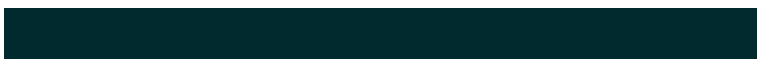
81, 8.681, 263.951



45, 4.055, 206.178



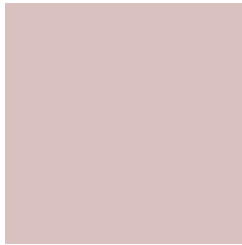
60, 34.111, 209.623



15, 13.888, 207.139

Previews

White Background



This preview shows how the CIELCh color 80, 9.115, 26.713 looks on a white background.

Color Contrast Check

Large Text (above 18pt) WCAG AA × Fail

Any Text WCAG AA × Fail

Large Text (above 18pt) WCAG AAA × Fail

Any Text WCAG AAA × Fail

Black Background



This preview shows how the CIE LCh color 80, 9.115, 26.713 looks on a black background.

Color Contrast Check

Large Text (above 18pt) WCAG AA ✓ Pass

Any Text WCAG AA ✓ Pass

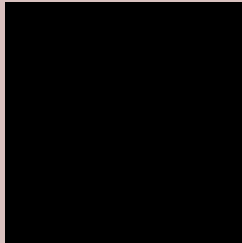
Large Text (above 18pt) WCAG AAA ✓ Pass

Any Text WCAG AAA ✓ Pass

If you want to check with other color combinations, try the [Color Contrast Checker](#).

CIELCh 80, 9.115, 26.713

Background



This preview shows how black text looks on a background with the CIELCh color 80, 9.115, 26.713.



This preview shows how white text looks on a background with the CIELCh color 80, 9.115, 26.713.

Color Blindness Simulation

Color vision deficiency is a very complex topic, and I could not describe the different causes any better than Wikipedia does, so if you want to learn more, you should check out their [article about color blindness](#).

Dichromacy



Original Color

80, 9.115, 26.713

Protanopia

80, 2.800, 68.529

Deuteranopia

80, 10.599, 23.048



Tritanopia
80, 13.041, 342.794

Trichromacy



Original Color
80, 9.115, 26.713

Protanomaly
80, 4.741, 39.219

Deuteranomaly
80, 10.213, 23.125

Tritanomaly
80, 10.768, 353.934

Monochromacy



Original Color
80, 9.115, 26.713

Achromatopsia
81, 0.010, 296.813

Achromatomaly
80, 3.326, 19.500

CSS Examples

Text

The CSS property to change the color of the text to CIELCh 80, 9.115, 26.713 is called "color". The color property can be set on classes, ids or directly on the HTML element.

This example shows how text in the color `rgb(217, 193, 191)` looks like.

```
.text, #text, p{  
    color:rgb(217, 193, 191)  
}
```

If you want to add a text shadow in that color use the text-shadow property, you can generate a text shadow directly with our [CSS Text Shadow Generator](#).

Here you see how black text with a 4 pixel rgb(217, 193, 191) colored shadow looks like.

```
.shadow{ text-shadow: 4px 4px 2px rgb(217, 193, 191) }
```

Border

The CSS property to change the border of an element to CIELCh 80, 9.115, 26.713 is called "border". The border property can be set on classes, ids or directly on the HTML element.

This example shows the color as border, it can be applied via the CSS property "border" or "border-color".

```
.border, #border, table{ border:4px solid rgb(217, 193, 191) }
```

If only the border color should be changed use the property `border-color`.

```
.border{ border-color:rgb(217, 193, 191) }
```

If you want to add a box shadow in that color use:

Here you see how a box with a 4 pixel `rgb(217, 193, 191)` colored shadow looks like.

```
.boxshadow{ -moz-box-shadow:4px 4px 4px  
4px rgb(217, 193, 191); -webkit-box-  
shadow:4px 4px 4px 4px rgb(217, 193, 191);  
box-shadow:4px 4px 4px 4px rgb(217, 193,  
191) }
```

Background

The CSS property to change the background color of an element to CIELCh 80, 9.115, 26.713 is called "background". The background property can be set on classes, ids or directly on the HTML element.

```
.background, #background, body{  
background: rgb(217, 193, 191) }
```

If only the background color should be changed can be used:

```
.background{ background-color: rgb(217,  
193, 191) }
```

This example shows the color as background, it is applied via the CSS property "background".

To optimize and compress your CSS code, you can use our [online CSS compressor and optimizer](#) based on csstidy. If you want to create a linear or radial gradient as background or border, check our [CSS Gradient Generator](#).

Hey! You found this booklet interesting? Support Converting Colors with the new Membership Option!

The pro membership hides all ads, plus gives you double the colors in the color bucket, and more awesome pro features!

[Learn more, Memberships starting at \\$2.50/m!](#)

**Follow me
on Twitter!**

@ConvertingColor