

Converting Colors

CIELCh(80, 9.243, 33.790)

Have a look what the booklet for
CIELCh(80, 9.243, 33.790) contains.

CIELCh(80, 9.334, 33.137)	3
<i>Conversions</i>	4
<i>Details</i>	6
<i>Harmonies</i>	11
<i>Previews</i>	20
<i>Color Blindness Simulation</i>	23
<i>CSS Examples</i>	26

Color

CIELCh(80, 9.334, 33.137)

Conversions

Conversions Part 1

Format	Color
Hex	D9C1BD
RGB	217, 193, 189
RGB Percent	85%, 76%, 74%
CMY	0.1483, 0.2424, 0.2581
CMYK	0.00, 0.11, 0.13, 0.15
HSL	9°, 27%, 80%
HSV	9°, 13%, 85%
XYZ	56.9847, 56.6813, 56.1829
YIQ	199.7200, 15.5880, 3.8440

Conversions

Conversions Part 2

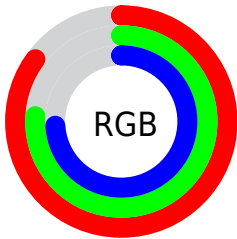
Format	Color
R _Y B	217, 194, 189
Decimal	14270909
CIE Lab	80.00, 7.82, 5.10
CIE LCh	80, 9.334, 33.137
Yxy	56.6813, 0.3355, 0.3337
Android (android.graphics.Color)	4292460989 (0xFFD9C1BD)
YUV	199.7200, -5.2850, 15.1546
Hunter-Lab	75.2870, 3.3544, 8.4557

Details

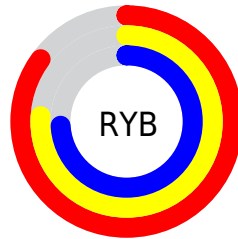
The CIELCh color **80, 9.334, 33.137** is a light color, and the websafe version is hex **CCCCCC**. A complement of this color would be **84, 8.576, 213.204**, and the grayscale version is **81, 0.010, 296.813**.

A 20% lighter version of the original color is **98, 2.923, 63.312**, and **60, 9.460, 30.499** is the 20% darker color. If you saturate the color by 10%, you get **75, 17.279, 33.424**, and if you desaturate by 10%, it is **85, 2.010, 32.813**.

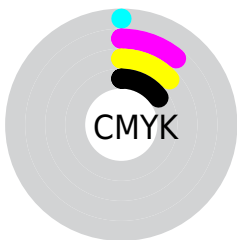
Distribution



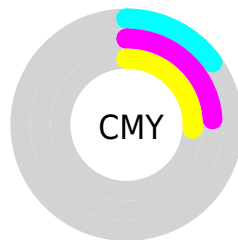
- Red (85%)
- Green (76%)
- Blue (74%)



- Red (85%)
- Yellow (76%)
- Blue (74%)



- Cyan (0%)
- Magenta (11%)
- Yellow (13%)
- Black (15%)



- Cyan (15%)
- Magenta (24%)
- Yellow (26%)

Brightness & Saturation Gradients

These gradients show how the CIELCh color 80, 9.334, 33.137 changes by changing the brightness by 10 percent. The first figure shows a shift by +10% for each color and the second figure -10%.

Similar to the brightness gradients but the following saturation gradients show a change of the CIELCh color 80, 9.334, 33.137 by changing the saturation by 10% instead.

80, 9.334, 33.137

80, 9.334, 33.137

100, 9.334, 33.137

70, 9.334, 33.137

60, 9.334, 33.137

50, 9.334, 33.137

40, 9.334, 33.137

30, 9.334, 33.137

20, 9.334, 33.137

10, 9.334, 33.137

0, 9.334, 33.137

80, 9.334, 33.137

80, 9.334, 33.137

75, 17.279, 33.424

85, 2.010, 32.813

70, 25.887, 33.855

91, 4.743, 213.221

65, 35.165, 34.506

96, 10.984,
213.218

61, 45.070, 35.433

97, 12.711,
198.657

57, 55.481, 36.677

53, 66.135, 38.225

50, 76.486, 39.913

48, 85.329, 41.224

47, 90.064, 41.803

Harmonies

Complementary

The Complementary color scheme is a pair of colors which are on the opposite of each other on the color wheel.



80, 9.334, 33.137



84, 8.576, 213.204

Rectangle

The Rectangle color scheme consists of four colors that form a rectangle on the color wheel.



80, 9.334, 33.137



80, 9.334, 83.137



80, 9.334, 213.137



80, 9.334, 263.137

Sweetspot

The Sweet Spot groups the original color and five complimentary colors.



80, 9.333, 33.151



98, 3.178, 32.903



80, 16.483, 329.052



52, 2.266, 32.942



0, 0.000, 0.000



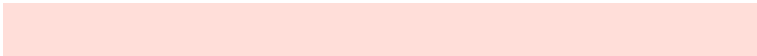
53, 0.007, 296.813

Same Dimension

The Same Dimension uses a secret algorithm to generate beautiful new colors.



80, 9.333, 33.151



91, 12.482, 33.203



83, 10.093, 86.709



43, 4.082, 33.076



37, 75.815, 42.083



7, 21.691, 27.864

Inverse Universe

The Inverse Universe completely reimagines the original color for something new.



84, 8.576, 213.204



96, 11.290, 213.221



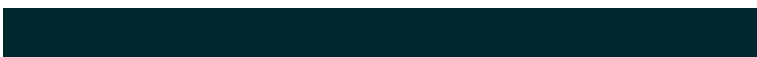
80, 10.023, 270.152



45, 3.841, 213.198



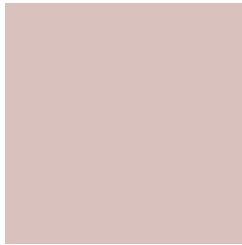
56, 32.698, 223.013



14, 13.267, 217.841

Previews

White Background



This preview shows how the CIELCh color 80, 9.334, 33.137 looks on a white background.

Color Contrast Check

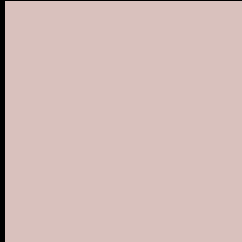
Large Text (above 18pt) WCAG AA × Fail

Any Text WCAG AA × Fail

Large Text (above 18pt) WCAG AAA × Fail

Any Text WCAG AAA × Fail

Black Background



This preview shows how the CIELCh color 80, 9.334, 33.137 looks on a black background.

Color Contrast Check

Large Text (above 18pt) WCAG AA ✓ Pass

Any Text WCAG AA ✓ Pass

Large Text (above 18pt) WCAG AAA ✓ Pass

Any Text WCAG AAA ✓ Pass

If you want to check with other color combinations, try the [Color Contrast Checker](#).

CIELCh 80, 9.334, 33.137

Background



This preview shows how black text looks on a background with the CIELCh color 80, 9.334, 33.137.



This preview shows how white text looks on a background with the CIELCh color 80, 9.334, 33.137.

Color Blindness Simulation

Color vision deficiency is a very complex topic, and I could not describe the different causes any better than Wikipedia does, so if you want to learn more, you should check out their [article about color blindness](#).

Dichromacy



Original Color

80, 9.334, 33.137

Protanopia

80, 3.871, 74.613

Deuteranopia

80, 11.131, 28.395



Tritanopia
80, 13.041, 342.794

Trichromacy



Original Color
80, 9.334, 33.137

Protanomaly
80, 5.535, 48.241

Deuteranomaly
80, 10.747, 28.661

Tritanomaly
80, 10.556, 356.535

Monochromacy



Original Color
80, 9.334, 33.137

Achromatopsia
81, 0.010, 296.813

Achromatomaly
80, 3.136, 39.202

CSS Examples

Text

The CSS property to change the color of the text to CIELCh 80, 9.334, 33.137 is called "color". The color property can be set on classes, ids or directly on the HTML element.

This example shows how text in the color `rgb(217, 193, 189)` looks like.

```
.text, #text, p{  
    color:rgb(217, 193, 189)  
}
```

If you want to add a text shadow in that color use the text-shadow property, you can generate a text shadow directly with our [CSS Text Shadow Generator](#).

Here you see how black text with a 4 pixel rgb(217, 193, 189) colored shadow looks like.

```
.shadow{ text-shadow: 4px 4px 2px rgb(217, 193, 189) }
```

Border

The CSS property to change the border of an element to CIELCh 80, 9.334, 33.137 is called "border". The border property can be set on classes, ids or directly on the HTML element.

This example shows the color as border, it can be applied via the CSS property "border" or "border-color".

```
.border, #border, table{ border:4px solid rgb(217, 193, 189) }
```

If only the border color should be changed use the property `border-color`.

```
.border{ border-color:rgb(217, 193, 189) }
```

If you want to add a box shadow in that color use:

Here you see how a box with a 4 pixel `rgb(217, 193, 189)` colored shadow looks like.

```
.boxshadow{ -moz-box-shadow:4px 4px 4px  
4px rgb(217, 193, 189); -webkit-box-  
shadow:4px 4px 4px 4px rgb(217, 193, 189);  
box-shadow:4px 4px 4px 4px rgb(217, 193,  
189) }
```

Background

The CSS property to change the background color of an element to CIELCh 80, 9.334, 33.137 is called "background". The background property can be set on classes, ids or directly on the HTML element.

```
.background, #background, body{  
background: rgb(217, 193, 189) }
```

If only the background color should be changed can be used:

```
.background{ background-color: rgb(217,  
193, 189) }
```

This example shows the color as background, it is applied via the CSS property "background".

To optimize and compress your CSS code, you can use our [online CSS compressor and optimizer](#) based on csstidy. If you want to create a linear or radial gradient as background or border, check our [CSS Gradient Generator](#).

Hey! You found this booklet interesting? Support Converting Colors with the new Membership Option!

The pro membership hides all ads, plus gives you double the colors in the color bucket, and more awesome pro features!

[Learn more, Memberships starting at \\$2.50/m!](#)

**Follow me
on Twitter!**

@ConvertingColor