

Converting Colors

CIELCh(80, 9.549, 20.123)

Have a look what the booklet for
CIELCh(80, 9.549, 20.123) contains.

CIELCh(80, 9.402, 20.093)	3
<i>Conversions</i>	4
<i>Details</i>	6
<i>Harmonies</i>	11
<i>Previews</i>	20
<i>Color Blindness Simulation</i>	23
<i>CSS Examples</i>	26

Color

CIELCh(80, 9.402, 20.093)

Conversions

Conversions Part 1

Format	Color
Hex	DAC1C1
RGB	218, 193, 193
RGB Percent	85%, 76%, 76%
CMY	0.1464, 0.2444, 0.2444
CMYK	0.00, 0.11, 0.11, 0.15
HSL	0°, 25%, 80%
HSV	0°, 11%, 85%
XYZ	57.3968, 56.6813, 58.1732
YIQ	200.4750, 14.9000, 5.3000

Conversions

Conversions Part 2

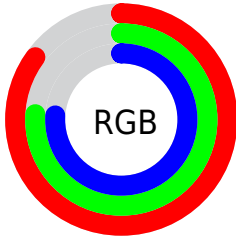
Format	Color
R _Y B	218, 193, 193
Decimal	14336449
CIE Lab	80.00, 8.83, 3.23
CIE LCh	80, 9.402, 20.093
Yxy	56.6813, 0.3332, 0.3291
Android (android.graphics.Color)	4292526529 (0xFFDAC1C1)
YUV	200.4750, -3.6852, 15.3694
Hunter-Lab	75.2870, 4.3314, 6.8883

Details

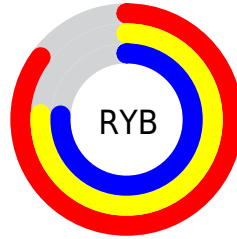
The CIELCh color **80, 9.402, 20.093** is a light color, and the websafe version is hex **CCCCCC**. A complement of this color would be **85, 8.739, 198.863**, and the grayscale version is **81, 0.010, 296.813**.

A 20% lighter version of the original color is **98, 2.114, 19.235**, and **60, 9.630, 17.012** is the 20% darker color. If you saturate the color by 10%, you get **74, 18.292, 20.988**, and if you desaturate by 10%, it is **86, 1.167, 19.004**.

Distribution



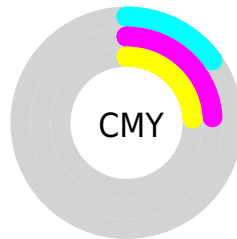
- Red (85%)
- Green (76%)
- Blue (76%)



- Red (85%)
- Yellow (76%)
- Blue (76%)



- Cyan (0%)
- Magenta (11%)
- Yellow (11%)
- Black (15%)



- Cyan (15%)
- Magenta (24%)
- Yellow (24%)

Brightness & Saturation Gradients

These gradients show how the CIELCh color 80, 9.402, 20.093 changes by changing the brightness by 10 percent. The first figure shows a shift by +10% for each color and the second figure -10%.

Similar to the brightness gradients but the following saturation gradients show a change of the CIELCh color 80, 9.402, 20.093 by changing the saturation by 10% instead.

80, 9.402, 20.093

80, 9.402, 20.093

100, 9.402, 20.093

70, 9.402, 20.093

60, 9.402, 20.093

50, 9.402, 20.093

40, 9.402, 20.093

30, 9.402, 20.093

20, 9.402, 20.093

10, 9.402, 20.093

0, 9.402, 20.093

80, 9.402, 20.093

80, 9.402, 20.093

74, 18.292, 20.988

86, 1.167, 19.004

68, 27.843, 22.110

92, 6.443, 199.082

63, 37.991, 23.571

97, 12.558,
198.667

58, 48.585, 25.478

54, 59.373, 27.942

50, 69.989, 31.015

48, 79.906, 34.552

46, 88.070, 37.918

45, 92.791, 40.001

Harmonies

Complementary

The Complementary color scheme is a pair of colors which are on the opposite of each other on the color wheel.



80, 9.402, 20.093



85, 8.739, 198.863

Rectangle

The Rectangle color scheme consists of four colors that form a rectangle on the color wheel.



80, 9.402, 20.093



80, 9.402, 70.093



80, 9.402, 200.093



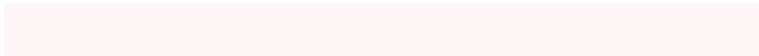
80, 9.402, 250.093

Sweetspot

The Sweet Spot groups the original color and five complimentary colors.



80, 9.400, 20.105



98, 2.702, 19.354



81, 16.102, 325.054



52, 2.054, 19.455



0, 0.000, 0.000



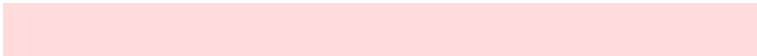
53, 0.007, 296.813

Same Dimension

The Same Dimension uses a secret algorithm to generate beautiful new colors.



80, 9.400, 20.105



90, 13.170, 20.322



83, 8.074, 73.971



43, 4.638, 19.942



36, 78.233, 39.930



5, 23.838, 20.275

Inverse Universe

The Inverse Universe completely reimagines the original color for something new.



85, 8.739, 198.863



98, 12.028, 198.714



82, 7.851, 256.990



45, 4.370, 198.984



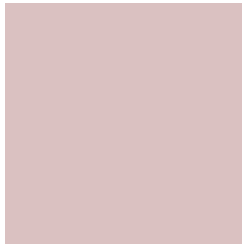
64, 37.524, 196.407



16, 15.071, 196.404

Previews

White Background



This preview shows how the CIELCh color 80, 9.402, 20.093 looks on a white background.

Color Contrast Check

Large Text (above 18pt) WCAG AA × Fail

Any Text WCAG AA × Fail

Large Text (above 18pt) WCAG AAA × Fail

Any Text WCAG AAA × Fail

Black Background



This preview shows how the CIELCh color 80, 9.402, 20.093 looks on a black background.

Color Contrast Check

Large Text (above 18pt) WCAG AA ✓ Pass

Any Text WCAG AA ✓ Pass

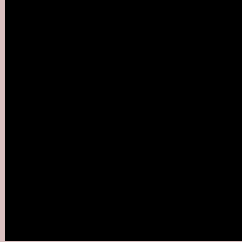
Large Text (above 18pt) WCAG AAA ✓ Pass

Any Text WCAG AAA ✓ Pass

If you want to check with other color combinations, try the [Color Contrast Checker](#).

CIELCh 80, 9.402, 20.093

Background



This preview shows how black text looks on a background with the CIELCh color 80, 9.402, 20.093.



This preview shows how white text looks on a background with the CIELCh color 80, 9.402, 20.093.

Color Blindness Simulation

Color vision deficiency is a very complex topic, and I could not describe the different causes any better than Wikipedia does, so if you want to learn more, you should check out their [article about color blindness](#).

Dichromacy



Original Color

80, 9.402, 20.093

Protanopia

80, 2.425, 60.288

Deuteranopia

80, 10.557, 17.332



Tritanopia
80, 13.041, 342.794

Trichromacy



Original Color
80, 9.402, 20.093

Protanomaly
80, 4.585, 32.994

Deuteranomaly
80, 10.174, 17.190

Tritanomaly
80, 11.105, 354.833

Monochromacy



Original Color
80, 9.402, 20.093

Achromatopsia
81, 0.010, 296.813

Achromatomaly
80, 3.326, 19.500

CSS Examples

Text

The CSS property to change the color of the text to CIELCh 80, 9.402, 20.093 is called "color". The color property can be set on classes, ids or directly on the HTML element.

This example shows how text in the color `rgb(218, 193, 193)` looks like.

```
.text, #text, p{  
    color:rgb(218, 193, 193)  
}
```

If you want to add a text shadow in that color use the text-shadow property, you can generate a text shadow directly with our [CSS Text Shadow Generator](#).

Here you see how black text with a 4 pixel rgb(218, 193, 193) colored shadow looks like.

```
.shadow{ text-shadow: 4px 4px 2px rgb(218, 193, 193) }
```

Border

The CSS property to change the border of an element to CIELCh 80, 9.402, 20.093 is called "border". The border property can be set on classes, ids or directly on the HTML element.

This example shows the color as border, it can be applied via the CSS property "border" or "border-color".

```
.border, #border, table{ border:4px solid rgb(218, 193, 193) }
```

If only the border color should be changed use the property `border-color`.

```
.border{ border-color:rgb(218, 193, 193) }
```

If you want to add a box shadow in that color use:

Here you see how a box with a 4 pixel `rgb(218, 193, 193)` colored shadow looks like.

```
.boxshadow{ -moz-box-shadow:4px 4px 4px  
4px rgb(218, 193, 193); -webkit-box-  
shadow:4px 4px 4px 4px rgb(218, 193, 193);  
box-shadow:4px 4px 4px 4px rgb(218, 193,  
193) }
```

Background

The CSS property to change the background color of an element to CIELCh 80, 9.402, 20.093 is called "background". The background property can be set on classes, ids or directly on the HTML element.

```
.background, #background, body{  
background: rgb(218, 193, 193) }
```

If only the background color should be changed can be used:

```
.background{ background-color: rgb(218,  
193, 193) }
```

This example shows the color as background, it is applied via the CSS property "background".

To optimize and compress your CSS code, you can use our [online CSS compressor and optimizer](#) based on csstidy. If you want to create a linear or radial gradient as background or border, check our [CSS Gradient Generator](#).

Hey! You found this booklet interesting? Support Converting Colors with the new Membership Option!

The pro membership hides all ads, plus gives you double the colors in the color bucket, and more awesome pro features!

[Learn more, Memberships starting at \\$2.50/m!](#)

**Follow me
on Twitter!**

@ConvertingColor