

Converting Colors

CIELCh(80, 9.832, 44.775)

Have a look what the booklet for
CIELCh(80, 9.832, 44.775) contains.

CIELCh(80, 9.739, 45.704)	3
<i>Conversions</i>	4
<i>Details</i>	6
<i>Harmonies</i>	11
<i>Previews</i>	20
<i>Color Blindness Simulation</i>	23
<i>CSS Examples</i>	26

Color

CIELCh(80, 9.739, 45.704)

Conversions

Conversions Part 1

Format	Color
Hex	D9C2BA
RGB	217, 194, 186
RGB Percent	85%, 76%, 73%
CMY	0.1503, 0.2404, 0.2718
CMYK	0.00, 0.11, 0.14, 0.15
HSL	15°, 29%, 79%
HSV	15°, 14%, 85%
XYZ	56.5743, 56.6813, 54.2427
YIQ	199.9650, 16.2760, 2.3880

Conversions

Conversions Part 2

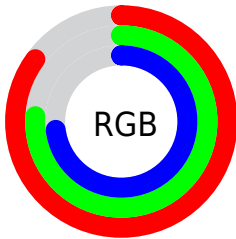
Format	Color
R _Y B	217, 197, 186
Decimal	14271162
CIE Lab	80.00, 6.80, 6.97
CIE LCh	80, 9.739, 45.704
Yxy	56.6813, 0.3378, 0.3384
Android (android.graphics.Color)	4292461242 (0xFFD9C2BA)
YUV	199.9650, -6.8847, 14.9397
Hunter-Lab	75.2870, 2.3814, 9.9837

Details

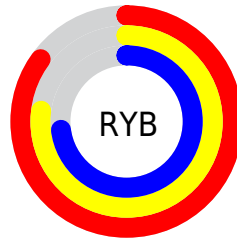
The CIELCh color $80, 9.739, 45.704$ is a light color, and the websafe version is hex `CCCCCC`. A complement of this color would be $82, 8.937, 227.342$, and the grayscale version is $81, 0.010, 296.813$.

A 20% lighter version of the original color is $98, 4.417, 86.084$, and $60, 9.812, 43.711$ is the 20% darker color. If you saturate the color by 10%, you get $75, 17.227, 45.394$, and if you desaturate by 10%, it is $85, 2.814, 46.012$.

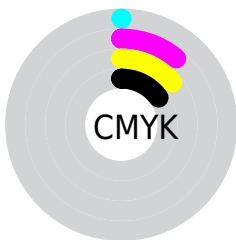
Distribution



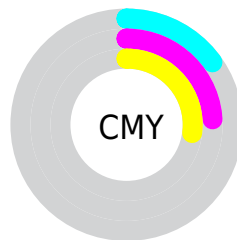
- Red (85%)
- Green (76%)
- Blue (73%)



- Red (85%)
- Yellow (77%)
- Blue (73%)



- Cyan (0%)
- Magenta (11%)
- Yellow (14%)
- Black (15%)



- Cyan (15%)
- Magenta (24%)
- Yellow (27%)

Brightness & Saturation Gradients

These gradients show how the CIELCh color 80, 9.739, 45.704 changes by changing the brightness by 10 percent. The first figure shows a shift by +10% for each color and the second figure -10%.

Similar to the brightness gradients but the following saturation gradients show a change of the CIELCh color 80, 9.739, 45.704 by changing the saturation by 10% instead.

 80, 9.739, 45.704

 80, 9.739, 45.704

 100, 9.739, 45.704

 70, 9.739, 45.704

 60, 9.739, 45.704

 50, 9.739, 45.704

 40, 9.739, 45.704

 30, 9.739, 45.704

 20, 9.739, 45.704

 10, 9.739, 45.704

 0, 9.739, 45.704

 80, 9.739, 45.704

 80, 9.739, 45.704

75, 17.227, 45.394

85, 2.814, 46.012

71, 25.326, 45.166

89, 3.600, 226.859

67, 34.064, 45.071

94, 9.560, 227.299

63, 43.426, 45.135

97, 12.873,
198.646

59, 53.326, 45.360

56, 63.519, 45.693

53, 73.433, 45.940

50, 81.846, 45.624

49, 85.767, 45.265

Harmonies

Complementary

The Complementary color scheme is a pair of colors which are on the opposite of each other on the color wheel.



80, 9.739, 45.704



82, 8.937, 227.342

Rectangle

The Rectangle color scheme consists of four colors that form a rectangle on the color wheel.



80, 9.739, 45.704



80, 9.739, 95.704



80, 9.739, 225.704



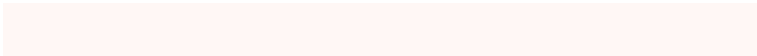
80, 9.739, 275.704

Sweetspot

The Sweet Spot groups the original color and five complimentary colors.



80, 9.738, 45.719



98, 2.984, 46.011



79, 16.818, 333.260



52, 2.127, 46.010



0, 0.000, 0.000



53, 0.007, 296.813

Same Dimension

The Same Dimension uses a secret algorithm to generate beautiful new colors.



80, 9.738, 45.719



91, 13.363, 45.619



84, 12.542, 95.517



43, 3.755, 45.890



39, 71.415, 45.750



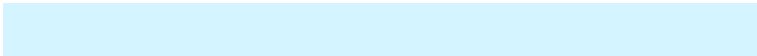
7, 18.780, 34.570

Inverse Universe

The Inverse Universe completely reimagines the original color for something new.



82, 8.937, 227.342



94, 12.035, 227.551



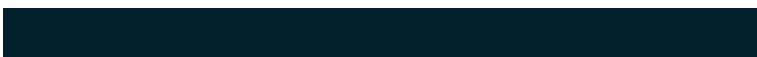
78, 12.667, 279.091



44, 3.556, 227.035



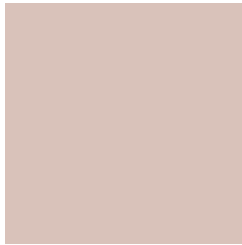
50, 34.152, 247.630



11, 12.834, 237.718

Previews

White Background



This preview shows how the CIELCh color 80, 9.739, 45.704 looks on a white background.

Color Contrast Check

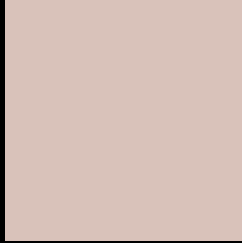
Large Text (above 18pt) WCAG AA × Fail

Any Text WCAG AA × Fail

Large Text (above 18pt) WCAG AAA × Fail

Any Text WCAG AAA × Fail

Black Background



This preview shows how the CIE LCh color 80, 9.739, 45.704 looks on a black background.

Color Contrast Check

Large Text (above 18pt) WCAG AA ✓ Pass

Any Text WCAG AA ✓ Pass

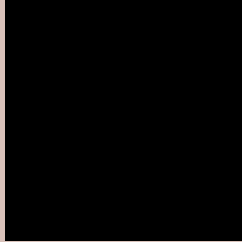
Large Text (above 18pt) WCAG AAA ✓ Pass

Any Text WCAG AAA ✓ Pass

If you want to check with other color combinations, try the [Color Contrast Checker](#).

CIELCh 80, 9.739, 45.704

Background



This preview shows how black text looks on a background with the CIELCh color 80, 9.739, 45.704.

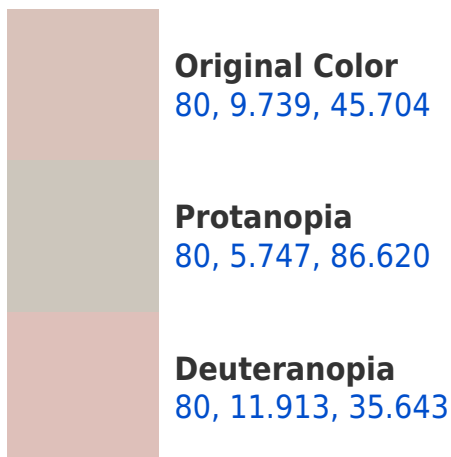


This preview shows how white text looks on a background with the CIELCh color 80, 9.739, 45.704.

Color Blindness Simulation

Color vision deficiency is a very complex topic, and I could not describe the different causes any better than Wikipedia does, so if you want to learn more, you should check out their [article about color blindness](#).

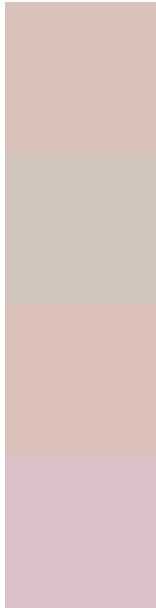
Dichromacy





Tritanopia
80, 13.041, 342.794

Trichromacy



Original Color
80, 9.739, 45.704

Protanomaly
80, 6.838, 63.832

Deuteranomaly
80, 10.965, 39.817

Tritanomaly
80, 10.367, 359.238

Monochromacy



Original Color
80, 9.739, 45.704

Achromatopsia
81, 0.010, 296.813

Achromatomaly
80, 3.353, 47.747

CSS Examples

Text

The CSS property to change the color of the text to CIELCh 80, 9.739, 45.704 is called "color". The color property can be set on classes, ids or directly on the HTML element.

This example shows how text in the color `rgb(217, 194, 186)` looks like.

```
.text, #text, p{  
    color:rgb(217, 194, 186)  
}
```

If you want to add a text shadow in that color use the text-shadow property, you can generate a text shadow directly with our [CSS Text Shadow Generator](#).

Here you see how black text with a 4 pixel rgb(217, 194, 186) colored shadow looks like.

```
.shadow{ text-shadow: 4px 4px 2px rgb(217, 194, 186) }
```

Border

The CSS property to change the border of an element to CIELCh 80, 9.739, 45.704 is called "border". The border property can be set on classes, ids or directly on the HTML element.

This example shows the color as border, it can be applied via the CSS property "border" or "border-color".

```
.border, #border, table{ border:4px solid rgb(217, 194, 186) }
```

If only the border color should be changed use the property `border-color`.

```
.border{ border-color:rgb(217, 194, 186) }
```

If you want to add a box shadow in that color use:

Here you see how a box with a 4 pixel `rgb(217, 194, 186)` colored shadow looks like.

```
.boxshadow{ -moz-box-shadow:4px 4px 4px  
4px rgb(217, 194, 186); -webkit-box-  
shadow:4px 4px 4px 4px rgb(217, 194, 186);  
box-shadow:4px 4px 4px 4px rgb(217, 194,  
186) }
```

Background

The CSS property to change the background color of an element to CIELCh 80, 9.739, 45.704 is called "background". The background property can be set on classes, ids or directly on the HTML element.

```
.background, #background, body{  
background: rgb(217, 194, 186) }
```

If only the background color should be changed can be used:

```
.background{ background-color: rgb(217,  
194, 186) }
```

This example shows the color as background, it is applied via the CSS property "background".

To optimize and compress your CSS code, you can use our [online CSS compressor and optimizer](#) based on csstidy. If you want to create a linear or radial gradient as background or border, check our [CSS Gradient Generator](#).

Hey! You found this booklet interesting? Support Converting Colors with the new Membership Option!

The pro membership hides all ads, plus gives you double the colors in the color bucket, and more awesome pro features!

[Learn more, Memberships starting at \\$2.50/m!](#)

**Follow me
on Twitter!**

@ConvertingColor