

Converting Colors

CIELCh(80, 9.859, 1.351)

Have a look what the booklet for
CIELCh(80, 9.859, 1.351) contains.

CIELCh(80, 9.845, 1.312)	3
<i>Conversions</i>	4
<i>Details</i>	6
<i>Harmonies</i>	11
<i>Previews</i>	20
<i>Color Blindness Simulation</i>	23
<i>CSS Examples</i>	26

Color

CIELCh(80, 9.845, 1.312)

Conversions

Conversions Part 1

Format	Color
Hex	D9C0C6
RGB	217, 192, 198
RGB Percent	85%, 75%, 78%
CMY	0.1481, 0.2461, 0.2226
CMYK	0.00, 0.12, 0.09, 0.15
HSL	346°, 25%, 80%
HSV	346°, 12%, 85%
XYZ	57.8103, 56.6813, 61.4645
YIQ	200.1590, 12.9740, 7.1660

Conversions

Conversions Part 2

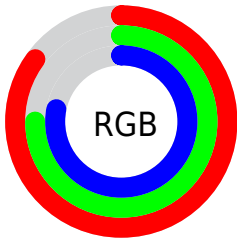
Format	Color
R _Y B	217, 192, 198
Decimal	14270662
CIE Lab	80.00, 9.84, 0.23
CIE LCh	80, 9.845, 1.312
Yxy	56.6813, 0.3285, 0.3221
Android (android.graphics.Color)	4292460742 (0xFFD9C0C6)
YUV	200.1590, -1.0644, 14.7696
Hunter-Lab	75.2870, 5.3119, 4.2964

Details

The CIELCh color **80, 9.845, 1.312** is a light color, and the websafe version is hex **CCCCCC**. A complement of this color would be **85, 9.454, 179.260**, and the grayscale version is **81, 0.010, 296.813**.

A 20% lighter version of the original color is **98, 4.358, 324.523**, and **60, 9.538, 3.251** is the 20% darker color. If you saturate the color by 10%, you get **74, 18.817, 2.485**, and if you desaturate by 10%, it is **86, 1.262, 359.979**.

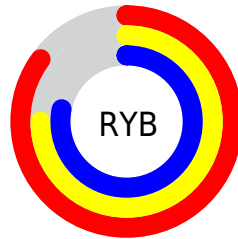
Distribution



Red (85%)

Green (75%)

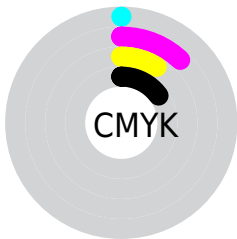
Blue (78%)



Red (85%)

Yellow (75%)

Blue (78%)

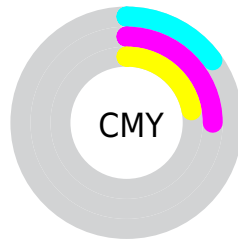


Cyan (0%)

Magenta (12%)

Yellow (9%)

Black (15%)



Cyan (15%)

Magenta (25%)

Yellow (22%)

Brightness & Saturation Gradients

These gradients show how the CIELCh color 80, 9.845, 1.312 changes by changing the brightness by 10 percent. The first figure shows a shift by +10% for each color and the second figure -10%.

Similar to the brightness gradients but the following saturation gradients show a change of the CIELCh color 80, 9.845, 1.312 by changing the saturation by 10% instead.

80, 9.845, 1.312

80, 9.845, 1.312

100, 9.845, 1.312

70, 9.845, 1.312

60, 9.845, 1.312

50, 9.845, 1.312

40, 9.845, 1.312

30, 9.845, 1.312

20, 9.845, 1.312

10, 9.845, 1.312

0, 9.845, 1.312

80, 9.845, 1.312

80, 9.845, 1.312

74, 18.817, 2.485

86, 1.262, 359.979

69, 28.104, 3.850

92, 6.896, 179.627

63, 37.547, 5.499

97, 13.452,
182.632

59, 46.896, 7.535

97, 12.692,
198.658

54, 55.800, 10.095

51, 63.866, 13.340

48, 70.777, 17.418

46, 76.465, 22.375

46, 80.692, 26.973

Harmonies

Complementary

The Complementary color scheme is a pair of colors which are on the opposite of each other on the color wheel.



80, 9.845, 1.312



85, 9.454, 179.260

Rectangle

The Rectangle color scheme consists of four colors that form a rectangle on the color wheel.



80, 9.845, 1.312



80, 9.845, 51.312



80, 9.845, 181.312



80, 9.845, 231.312

Sweetspot

The Sweet Spot groups the original color and five complimentary colors.



80, 9.843, 1.320



98, 2.865, 0.329



80, 14.988, 317.773



52, 2.176, 0.449



0, 0.000, 0.000



53, 0.007, 296.813

Same Dimension

The Same Dimension uses a secret algorithm to generate beautiful new colors.



80, 9.843, 1.320



91, 13.720, 1.611



81, 7.790, 44.866



43, 4.869, 1.094



36, 67.722, 26.024



5, 23.784, 9.880

Inverse Universe

The Inverse Universe completely reimagines the original color for something new.



80, 9.843, 1.320



91, 13.720, 1.611



83, 7.273, 226.117



43, 4.869, 1.094



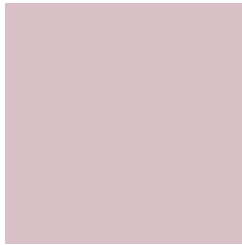
36, 67.722, 26.024



5, 23.784, 9.880

Previews

White Background



This preview shows how the CIELCh color 80, 9.845, 1.312 looks on a white background.

Color Contrast Check

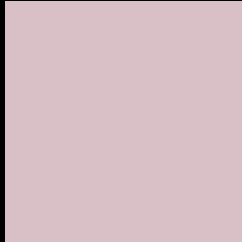
Large Text (above 18pt) WCAG AA × Fail

Any Text WCAG AA × Fail

Large Text (above 18pt) WCAG AAA × Fail

Any Text WCAG AAA × Fail

Black Background



This preview shows how the CIELCh color 80, 9.845, 1.312 looks on a black background.

Color Contrast Check

Large Text (above 18pt) WCAG AA ✓ Pass

Any Text WCAG AA ✓ Pass

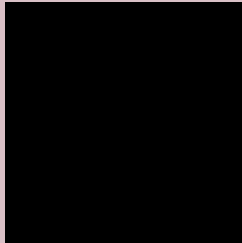
Large Text (above 18pt) WCAG AAA ✓ Pass

Any Text WCAG AAA ✓ Pass

If you want to check with other color combinations, try the [Color Contrast Checker](#).

CIELCh 80, 9.845, 1.312

Background



This preview shows how black text looks on a background with the CIELCh color 80, 9.845, 1.312.



This preview shows how white text looks on a background with the CIELCh color 80, 9.845, 1.312.

Color Blindness Simulation

Color vision deficiency is a very complex topic, and I could not describe the different causes any better than Wikipedia does, so if you want to learn more, you should check out their [article about color blindness](#).

Dichromacy





Tritanopia
80, 12.751, 341.737

Trichromacy



Original Color

80, 9.845, 1.312

Protanomaly

80, 5.178, 348.824

Deuteranomaly

80, 10.203, 2.037

Tritanomaly

80, 11.853, 347.826

Monochromacy



Original Color

80, 9.845, 1.312

Achromatopsia

81, 0.010, 296.813

Achromatomaly

80, 3.492, 1.823

CSS Examples

Text

The CSS property to change the color of the text to CIELCh 80, 9.845, 1.312 is called "color". The color property can be set on classes, ids or directly on the HTML element.

This example shows how text in the color `rgb(217, 192, 198)` looks like.

```
.text, #text, p{  
    color:rgb(217, 192, 198)  
}
```

If you want to add a text shadow in that color use the text-shadow property, you can generate a text shadow directly with our [CSS Text Shadow Generator](#).

Here you see how black text with a 4 pixel rgb(217, 192, 198) colored shadow looks like.

```
.shadow{ text-shadow: 4px 4px 2px rgb(217, 192, 198) }
```

Border

The CSS property to change the border of an element to CIELCh 80, 9.845, 1.312 is called "border". The border property can be set on classes, ids or directly on the HTML element.

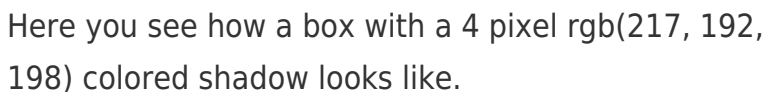
This example shows the color as border, it can be applied via the CSS property "border" or "border-color".

```
.border, #border, table{ border:4px solid rgb(217, 192, 198) }
```

If only the border color should be changed use the property `border-color`.

```
.border{ border-color:rgb(217, 192, 198) }
```

If you want to add a box shadow in that color use:



Here you see how a box with a 4 pixel `rgb(217, 192, 198)` colored shadow looks like.

```
.boxshadow{ -moz-box-shadow:4px 4px 4px 4px rgb(217, 192, 198); -webkit-box-shadow:4px 4px 4px 4px rgb(217, 192, 198); box-shadow:4px 4px 4px 4px rgb(217, 192, 198) }
```

Background

The CSS property to change the background color of an element to CIELCh 80, 9.845, 1.312 is called "background". The background property can be set on classes, ids or directly on the HTML element.

```
.background, #background, body{  
background: rgb(217, 192, 198) }
```

If only the background color should be changed can be used:

```
.background{ background-color: rgb(217,  
192, 198) }
```

This example shows the color as background, it is applied via the CSS property "background".

To optimize and compress your CSS code, you can use our [online CSS compressor and optimizer](#) based on csstidy. If you want to create a linear or radial gradient as background or border, check our [CSS Gradient Generator](#).

Hey! You found this booklet interesting? Support Converting Colors with the new Membership Option!

The pro membership hides all ads, plus gives you double the colors in the color bucket, and more awesome pro features!

[Learn more, Memberships starting at \\$2.50/m!](#)

**Follow me
on Twitter!**

@ConvertingColor