

Converting Colors

CIELCh(81, 10.005, 15.432)

Have a look what the booklet for
CIELCh(81, 10.005, 15.432) contains.

CIELCh(81, 10.165, 14.206)	3
<i>Conversions</i>	4
<i>Details</i>	6
<i>Harmonies</i>	11
<i>Previews</i>	20
<i>Color Blindness Simulation</i>	23
<i>CSS Examples</i>	26

Color

CIELCh(81, 10.165, 14.206)

Conversions

Conversions Part 1

Format	Color
Hex	DEC3C5
RGB	222, 195, 197
RGB Percent	87%, 76%, 77%
CMY	0.1301, 0.2360, 0.2282
CMYK	0.00, 0.12, 0.11, 0.13
HSL	356°, 29%, 82%
HSV	356°, 12%, 87%
XYZ	59.5979, 58.4711, 60.8585
YIQ	203.3010, 15.4500, 6.3460

Conversions

Conversions Part 2

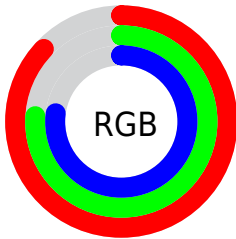
Format	Color
R _Y B	222, 195, 197
Decimal	14599109
CIE Lab	81.00, 9.85, 2.49
CIE LCh	81, 10.165, 14.206
Yxy	58.4711, 0.3331, 0.3268
Android (android.graphics.Color)	4292789189 (0xFFDEC3C5)
YUV	203.3010, -3.1064, 16.3990
Hunter-Lab	76.4664, 5.3066, 6.3384

Details

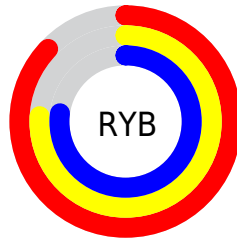
The CIELCh color $81, 10.165, 14.206$ is a light color, and the websafe version is hex `CCCCCC`. A complement of this color would be $86, 9.506, 192.459$, and the grayscale version is $82, 0.010, 296.813$.

A 20% lighter version of the original color is $99, 1.478, 335.465$, and $61, 10.436, 14.288$ is the 20% darker color. If you saturate the color by 10%, you get $75, 19.158, 15.269$, and if you desaturate by 10%, it is $87, 1.750, 13.107$.

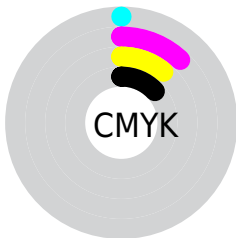
Distribution



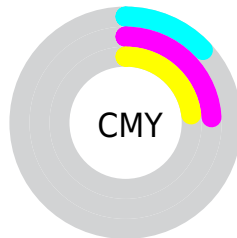
- Red (87%)
- Green (76%)
- Blue (77%)



- Red (87%)
- Yellow (76%)
- Blue (77%)



- Cyan (0%)
- Magenta (12%)
- Yellow (11%)
- Black (13%)



- Cyan (13%)
- Magenta (24%)
- Yellow (23%)


Brightness & Saturation Gradients


These gradients show how the CIELCh color 81, 10.165, 14.206 changes by changing the brightness by 10 percent. The first figure shows a shift by +10% for each color and the second figure -10%.

Similar to the brightness gradients but the following saturation gradients show a change of the CIELCh color 81, 10.165, 14.206 by changing the saturation by 10% instead.

 81, 10.165, 14.206

 81, 10.165, 14.206

 100, 10.165,
14.206

 71, 10.165, 14.206

 61, 10.165, 14.206

 51, 10.165, 14.206

 41, 10.165, 14.206

 31, 10.165, 14.206

 21, 10.165, 14.206

 11, 10.165, 14.206

 1, 10.165, 14.206

 0, 10.165, 14.206

81, 10.165, 14.206

81, 10.165, 14.206

75, 19.158, 15.269

87, 1.750, 13.107

69, 28.703, 16.562

93, 6.094, 192.851

64, 38.703, 18.195

98, 11.214,
198.757

59, 48.966, 20.282

55, 59.211, 22.950

51, 69.090, 26.304

49, 78.241, 30.321

47, 86.196, 34.645

46, 91.103, 37.536

Harmonies

Complementary

The Complementary color scheme is a pair of colors which are on the opposite of each other on the color wheel.



81, 10.165, 14.206



86, 9.506, 192.459

Rectangle

The Rectangle color scheme consists of four colors that form a rectangle on the color wheel.



81, 10.165, 14.206



81, 10.165, 64.206



81, 10.165, 194.206



81, 10.165, 244.206

Sweetspot

The Sweet Spot groups the original color and five complimentary colors.



81, 10.163, 14.217



97, 3.638, 13.406



81, 16.902, 322.769



51, 2.592, 13.494



0, 0.000, 0.000



53, 0.007, 296.813

Same Dimension

The Same Dimension uses a secret algorithm to generate beautiful new colors.



81, 10.163, 14.217



90, 14.172, 14.508



84, 8.358, 64.550



43, 4.653, 13.954



36, 75.201, 36.889



5, 23.747, 17.078

Inverse Universe

The Inverse Universe completely reimagines the original color for something new.



81, 10.163, 14.217



90, 14.172, 14.508



84, 7.978, 247.404



43, 4.653, 13.954



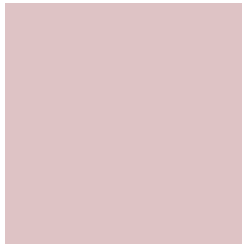
36, 75.201, 36.889



5, 23.747, 17.078

Previews

White Background



This preview shows how the CIELCh color 81, 10.165, 14.206 looks on a white background.

Color Contrast Check

Large Text (above 18pt) WCAG AA × Fail

Any Text WCAG AA × Fail

Large Text (above 18pt) WCAG AAA × Fail

Any Text WCAG AAA × Fail

Black Background



This preview shows how the CIE LCh color 81, 10.165, 14.206 looks on a black background.

Color Contrast Check

Large Text (above 18pt) WCAG AA ✓ Pass

Any Text WCAG AA ✓ Pass

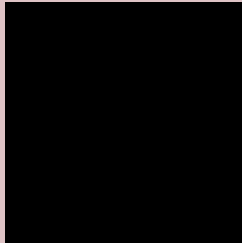
Large Text (above 18pt) WCAG AAA ✓ Pass

Any Text WCAG AAA ✓ Pass

If you want to check with other color combinations, try the [Color Contrast Checker](#).

CIELCh 81, 10.165, 14.206

Background



This preview shows how black text looks on a background with the CIELCh color 81, 10.165, 14.206.



This preview shows how white text looks on a background with the CIELCh color 81, 10.165, 14.206.

Color Blindness Simulation

Color vision deficiency is a very complex topic, and I could not describe the different causes any better than Wikipedia does, so if you want to learn more, you should check out their [article about color blindness](#).

Dichromacy



Original Color

81, 10.165, 14.206

Protanopia

81, 1.836, 19.246

Deuteranopia

81, 10.165, 14.206



Tritanopia
81, 13.607, 344.769

Trichromacy



Original Color
81, 10.165, 14.206

Protanomaly
81, 4.841, 13.396

Deuteranomaly
81, 10.165, 14.206

Tritanomaly
81, 11.974, 354.139

Monochromacy



Original Color
81, 10.165, 14.206

Achromatopsia
82, 0.010, 296.813

Achromatomaly
81, 3.725, 11.383

CSS Examples

Text

The CSS property to change the color of the text to CIELCh 81, 10.165, 14.206 is called "color". The color property can be set on classes, ids or directly on the HTML element.

This example shows how text in the color `rgb(222, 195, 197)` looks like.

```
.text, #text, p{  
    color:rgb(222, 195, 197)  
}
```

If you want to add a text shadow in that color use the text-shadow property, you can generate a text shadow directly with our [CSS Text Shadow Generator](#).

Here you see how black text with a 4 pixel rgb(222, 195, 197) colored shadow looks like.

```
.shadow{ text-shadow: 4px 4px 2px rgb(222, 195, 197) }
```

Border

The CSS property to change the border of an element to CIELCh 81, 10.165, 14.206 is called "border". The border property can be set on classes, ids or directly on the HTML element.

This example shows the color as border, it can be applied via the CSS property "border" or "border-color".

```
.border, #border, table{ border:4px solid rgb(222, 195, 197) }
```

If only the border color should be changed use the property `border-color`.

```
.border{ border-color:rgb(222, 195, 197) }
```

If you want to add a box shadow in that color use:

Here you see how a box with a 4 pixel `rgb(222, 195, 197)` colored shadow looks like.

```
.boxshadow{ -moz-box-shadow:4px 4px 4px  
4px rgb(222, 195, 197); -webkit-box-  
shadow:4px 4px 4px 4px rgb(222, 195, 197);  
box-shadow:4px 4px 4px 4px rgb(222, 195,  
197) }
```

Background

The CSS property to change the background color of an element to CIELCh 81, 10.165, 14.206 is called "background". The background property can be set on classes, ids or directly on the HTML element.

```
.background, #background, body{  
background: rgb(222, 195, 197) }
```

If only the background color should be changed can be used:

```
.background{ background-color: rgb(222,  
195, 197) }
```

This example shows the color as background, it is applied via the CSS property "background".

To optimize and compress your CSS code, you can use our [online CSS compressor and optimizer](#) based on csstidy. If you want to create a linear or radial gradient as background or border, check our [CSS Gradient Generator](#).

Hey! You found this booklet interesting? Support Converting Colors with the new Membership Option!

The pro membership hides all ads, plus gives you double the colors in the color bucket, and more awesome pro features!

[Learn more, Memberships starting at \\$2.50/m!](#)

**Follow me
on Twitter!**

@ConvertingColor