

Converting Colors

CIELCh(81, 10.355, 3.092)

Have a look what the booklet for
CIELCh(81, 10.355, 3.092) contains.

CIELCh(81, 10.035, 4.905)	3
<i>Conversions</i>	4
<i>Details</i>	6
<i>Harmonies</i>	11
<i>Previews</i>	20
<i>Color Blindness Simulation</i>	23
<i>CSS Examples</i>	26

Color

CIELCh(81, 10.035, 4.905)

Conversions

Conversions Part 1

Format	Color
Hex	<code>DDC3C8</code>
RGB	<code>221, 195, 200</code>
RGB Percent	<code>87%, 76%, 78%</code>
CMY	<code>0.1340, 0.2359, 0.2163</code>
CMYK	<code>0.00, 0.12, 0.10, 0.13</code>
HSL	<code>348°, 28%, 82%</code>
HSV	<code>348°, 12%, 87%</code>
XYZ	<code>59.6581, 58.4711, 62.6902</code>
YIQ	<code>203.3440, 13.8910, 7.0670</code>

Conversions

Conversions Part 2

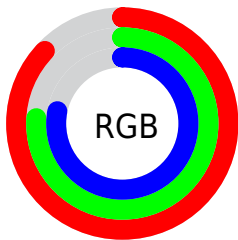
Format	Color
R _Y B	221, 195, 200
Decimal	14533576
CIE Lab	81.00, 10.00, 0.86
CIE LCh	81, 10.035, 4.905
Yxy	58.4711, 0.3299, 0.3234
Android (android.graphics.Color)	4292723656 (0xFFDDC3C8)
YUV	203.3440, -1.6486, 15.4843
Hunter-Lab	76.4664, 5.4472, 4.9182

Details

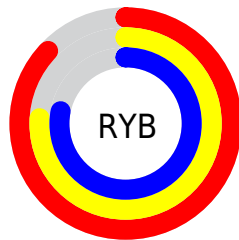
The CIELCh color **81, 10.035, 4.905** is a light color, and the websafe version is hex **CCCCCC**. A complement of this color would be **86, 9.566, 182.858**, and the grayscale version is **82, 0.010, 296.813**.

A 20% lighter version of the original color is **99, 1.871, 324.342**, and **61, 10.283, 4.655** is the 20% darker color. If you saturate the color by 10%, you get **75, 19.042, 6.077**, and if you desaturate by 10%, it is **87, 1.470, 3.631**.

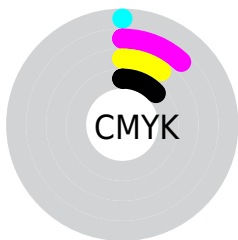
Distribution



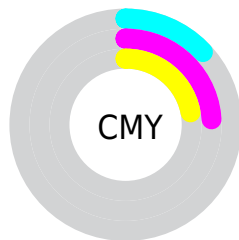
- Red (87%)
- Green (76%)
- Blue (78%)



- Red (87%)
- Yellow (76%)
- Blue (78%)



- Cyan (0%)
- Magenta (12%)
- Yellow (10%)
- Black (13%)



- Cyan (13%)
- Magenta (24%)
- Yellow (22%)

Brightness & Saturation Gradients

These gradients show how the CIELCh color 81, 10.035, 4.905 changes by changing the brightness by 10 percent. The first figure shows a shift by +10% for each color and the second figure -10%.

Similar to the brightness gradients but the following saturation gradients show a change of the CIELCh color 81, 10.035, 4.905 by changing the saturation by 10% instead.



81, 10.035, 4.905

81, 10.035, 4.905

75, 19.042, 6.077

87, 1.470, 3.631

70, 28.429, 7.456

93, 6.627, 183.262

64, 38.052, 9.140

98, 11.612,
194.589

59, 47.673, 11.240

98, 11.530,
198.736

55, 56.962, 13.893

51, 65.541, 17.255

49, 73.110, 21.443

47, 79.582, 26.419

46, 84.318, 30.717

Harmonies

Complementary

The Complementary color scheme is a pair of colors which are on the opposite of each other on the color wheel.



81, 10.035, 4.905



86, 9.566, 182.858

Rectangle

The Rectangle color scheme consists of four colors that form a rectangle on the color wheel.



81, 10.035, 4.905



81, 10.035, 54.905



81, 10.035, 184.905



81, 10.035, 234.905

Sweetspot

The Sweet Spot groups the original color and five complimentary colors.



81, 10.033, 4.914



97, 3.754, 4.047



81, 15.750, 319.318



51, 2.673, 4.144



0, 0.000, 0.000



53, 0.007, 296.813

Same Dimension

The Same Dimension uses a secret algorithm to generate beautiful new colors.



81, 10.033, 4.914



91, 13.495, 5.172



83, 7.970, 50.731



43, 4.782, 4.661



36, 69.784, 29.758



5, 23.738, 11.961

Inverse Universe

The Inverse Universe completely reimagines the original color for something new.



81, 10.033, 4.914



91, 13.495, 5.172



84, 7.472, 232.542



43, 4.782, 4.661



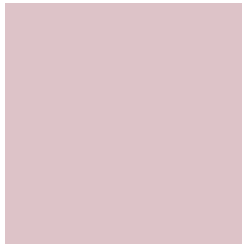
36, 69.784, 29.758



5, 23.738, 11.961

Previews

White Background



This preview shows how the CIELCh color 81, 10.035, 4.905 looks on a white background.

Color Contrast Check

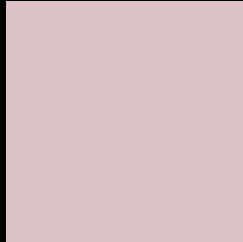
Large Text (above 18pt) WCAG AA × Fail

Any Text WCAG AA × Fail

Large Text (above 18pt) WCAG AAA × Fail

Any Text WCAG AAA × Fail

Black Background



This preview shows how the CIELCh color 81, 10.035, 4.905 looks on a black background.

Color Contrast Check

Large Text (above 18pt) WCAG AA ✓ Pass

Any Text WCAG AA ✓ Pass

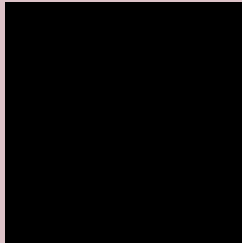
Large Text (above 18pt) WCAG AAA ✓ Pass

Any Text WCAG AAA ✓ Pass

If you want to check with other color combinations, try the [Color Contrast Checker](#).

CIELCh 81, 10.035, 4.905

Background



This preview shows how black text looks on a background with the CIELCh color 81, 10.035, 4.905.



This preview shows how white text looks on a background with the CIELCh color 81, 10.035, 4.905.

Color Blindness Simulation

Color vision deficiency is a very complex topic, and I could not describe the different causes any better than Wikipedia does, so if you want to learn more, you should check out their [article about color blindness](#).

Dichromacy



Original Color

81, 10.035, 4.905

Protanopia

81, 2.180, 332.315

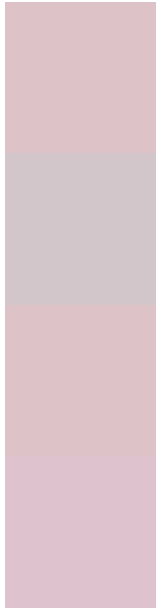
Deuteranopia

81, 10.035, 4.905



Tritanopia
81, 13.623, 341.992

Trichromacy



Original Color
81, 10.035, 4.905

Protanomaly
81, 4.914, 354.120

Deuteranomaly
81, 10.035, 4.905

Tritanomaly
81, 12.134, 348.796

Monochromacy



Original Color
81, 10.035, 4.905

Achromatopsia
82, 0.010, 296.813

Achromatomaly
81, 3.482, 1.815

CSS Examples

Text

The CSS property to change the color of the text to CIELCh 81, 10.035, 4.905 is called "color". The color property can be set on classes, ids or directly on the HTML element.

This example shows how text in the color `rgb(221, 195, 200)` looks like.

```
.text, #text, p{  
    color:rgb(221, 195, 200)  
}
```

If you want to add a text shadow in that color use the text-shadow property, you can generate a text shadow directly with our [CSS Text Shadow Generator](#).

Here you see how black text with a 4 pixel rgb(221, 195, 200) colored shadow looks like.

```
.shadow{ text-shadow: 4px 4px 2px rgb(221, 195, 200) }
```

Border

The CSS property to change the border of an element to CIELCh 81, 10.035, 4.905 is called "border". The border property can be set on classes, ids or directly on the HTML element.

This example shows the color as border, it can be applied via the CSS property "border" or "border-color".

```
.border, #border, table{ border:4px solid rgb(221, 195, 200) }
```

If only the border color should be changed use the property `border-color`.

```
.border{ border-color:rgb(221, 195, 200) }
```

If you want to add a box shadow in that color use:

Here you see how a box with a 4 pixel `rgb(221, 195, 200)` colored shadow looks like.

```
.boxshadow{ -moz-box-shadow:4px 4px 4px 4px rgb(221, 195, 200); -webkit-box-shadow:4px 4px 4px 4px rgb(221, 195, 200); box-shadow:4px 4px 4px 4px rgb(221, 195, 200) }
```

Background

The CSS property to change the background color of an element to CIELCh 81, 10.035, 4.905 is called "background". The background property can be set on classes, ids or directly on the HTML element.

```
.background, #background, body{  
background: rgb(221, 195, 200) }
```

If only the background color should be changed can be used:

```
.background{ background-color: rgb(221,  
195, 200) }
```

This example shows the color as background, it is applied via the CSS property "background".

To optimize and compress your CSS code, you can use our [online CSS compressor and optimizer](#) based on csstidy. If you want to create a linear or radial gradient as background or border, check our [CSS Gradient Generator](#).

Hey! You found this booklet interesting? Support Converting Colors with the new Membership Option!

The pro membership hides all ads, plus gives you double the colors in the color bucket, and more awesome pro features!

[Learn more, Memberships starting at \\$2.50/m!](#)

**Follow me
on Twitter!**

@ConvertingColor