

Converting Colors

CIELCh(81, 11.120, 41.229)

Have a look what the booklet for
CIELCh(81, 11.120, 41.229) contains.

CIELCh(81, 11.308, 39.176)	3
<i>Conversions</i>	4
<i>Details</i>	6
<i>Harmonies</i>	11
<i>Previews</i>	20
<i>Color Blindness Simulation</i>	23
<i>CSS Examples</i>	26

Color

CIELCh(81, 11.308, 39.176)

Conversions

Conversions Part 1

Format	Color
Hex	DFC3BC
RGB	223, 195, 188
RGB Percent	87%, 76%, 74%
CMY	0.1247, 0.2345, 0.2620
CMYK	0.00, 0.13, 0.16, 0.12
HSL	12°, 35%, 81%
HSV	12°, 16%, 88%
XYZ	59.1444, 58.4711, 55.8507
YIQ	202.5740, 18.9350, 3.7590

Conversions

Conversions Part 2

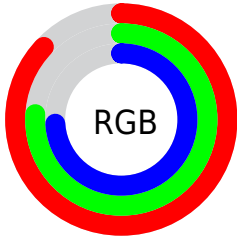
Format	Color
R _Y B	223, 197, 188
Decimal	14664636
CIE Lab	81.00, 8.77, 7.14
CIE LCh	81, 11.308, 39.176
Yxy	58.4711, 0.3410, 0.3371
Android (android.graphics.Color)	4292854716 (0xFFDFC3BC)
YUV	202.5740, -7.1850, 17.9136
Hunter-Lab	76.4664, 4.2481, 10.2214

Details

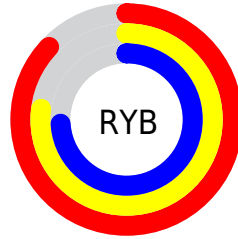
The CIELCh color **81, 11.308, 39.176** is a light color, and the websafe version is hex **FFCCCC**. A complement of this color would be **85, 10.216, 220.069**, and the grayscale version is **82, 0.010, 296.813**.

A 20% lighter version of the original color is **99, 4.181, 95.099**, and **61, 11.536, 37.250** is the 20% darker color. If you saturate the color by 10%, you get **76, 19.306, 39.192**, and if you desaturate by 10%, it is **86, 3.932, 39.227**.

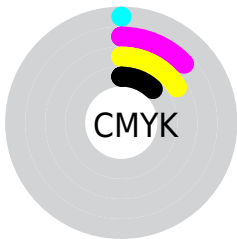
Distribution



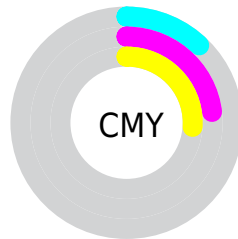
- Red (87%)
- Green (76%)
- Blue (74%)



- Red (87%)
- Yellow (77%)
- Blue (74%)



- Cyan (0%)
- Magenta (13%)
- Yellow (16%)
- Black (12%)



- Cyan (12%)
- Magenta (23%)
- Yellow (26%)


Brightness & Saturation Gradients

These gradients show how the CIELCh color 81, 11.308, 39.176 changes by changing the brightness by 10 percent. The first figure shows a shift by +10% for each color and the second figure -10%.

Similar to the brightness gradients but the following saturation gradients show a change of the CIELCh color 81, 11.308, 39.176 by changing the saturation by 10% instead.

 81, 11.308, 39.176

 81, 11.308, 39.176

 100, 11.308,
39.176

 71, 11.308, 39.176

 61, 11.308, 39.176

 51, 11.308, 39.176

 41, 11.308, 39.176

 31, 11.308, 39.176

 21, 11.308, 39.176

 11, 11.308, 39.176

 1, 11.308, 39.176

 0, 11.308, 39.176

81, 11.308, 39.176

81, 11.308, 39.176

76, 19.306, 39.192

86, 3.932, 39.227

71, 27.972, 39.335

91, 2.874, 219.805

67, 37.318, 39.664

96, 9.148, 219.507

62, 47.308, 40.216

98, 10.764,
198.788

59, 57.816, 41.004

55, 68.543, 41.972

52, 78.803, 42.887

50, 87.134, 43.156

49, 90.093, 43.210

Harmonies

Complementary

The Complementary color scheme is a pair of colors which are on the opposite of each other on the color wheel.



81, 11.308, 39.176



85, 10.216, 220.069

Rectangle

The Rectangle color scheme consists of four colors that form a rectangle on the color wheel.



81, 11.308, 39.176



81, 11.308, 89.176



81, 11.308, 219.176



81, 11.308, 269.176

Sweetspot

The Sweet Spot groups the original color and five complimentary colors.



81, 11.307, 39.189



97, 3.843, 39.219



80, 19.586, 331.499



51, 2.630, 39.227



0, 0.000, 0.000



53, 0.007, 296.813

Same Dimension

The Same Dimension uses a secret algorithm to generate beautiful new colors.



81, 11.307, 39.189



89, 15.482, 39.177



85, 13.417, 91.745



44, 4.007, 39.225



39, 75.033, 43.593



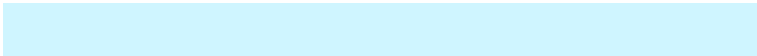
8, 22.335, 32.205

Inverse Universe

The Inverse Universe completely reimagines the original color for something new.



85, 10.216, 220.069



94, 13.648, 220.226



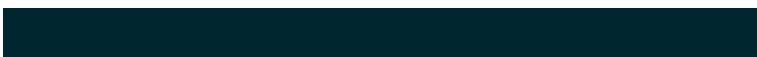
80, 13.457, 275.834



46, 3.778, 219.855



54, 33.252, 235.438



14, 13.541, 228.346

Previews

White Background



This preview shows how the CIELCh color 81, 11.308, 39.176 looks on a white background.

Color Contrast Check

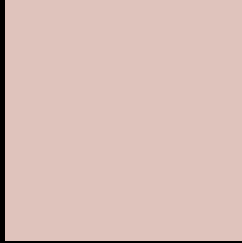
Large Text (above 18pt) WCAG AA × Fail

Any Text WCAG AA × Fail

Large Text (above 18pt) WCAG AAA × Fail

Any Text WCAG AAA × Fail

Black Background



This preview shows how the CIELCh color 81, 11.308, 39.176 looks on a black background.

Color Contrast Check

Large Text (above 18pt) WCAG AA ✓ Pass

Any Text WCAG AA ✓ Pass

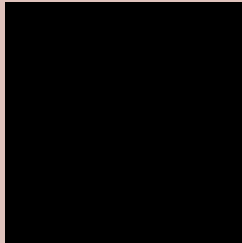
Large Text (above 18pt) WCAG AAA ✓ Pass

Any Text WCAG AAA ✓ Pass

If you want to check with other color combinations, try the [Color Contrast Checker](#).

CIELCh 81, 11.308, 39.176

Background



This preview shows how black text looks on a background with the CIELCh color 81, 11.308, 39.176.



This preview shows how white text looks on a background with the CIELCh color 81, 11.308, 39.176.

Color Blindness Simulation

Color vision deficiency is a very complex topic, and I could not describe the different causes any better than Wikipedia does, so if you want to learn more, you should check out their [article about color blindness](#).

Dichromacy



Original Color

81, 11.308, 39.176

Protanopia

81, 5.420, 80.841

Deuteranopia

81, 12.642, 34.750



Tritanopia
81, 14.847, 348.288

Trichromacy



Original Color
81, 11.308, 39.176

Protanomaly
81, 7.053, 56.518

Deuteranomaly
81, 12.263, 35.181

Tritanomaly
81, 12.499, 3.188

Monochromacy



Original Color
81, 11.308, 39.176

Achromatopsia
82, 0.010, 296.813

Achromatomaly
81, 3.841, 35.510

CSS Examples

Text

The CSS property to change the color of the text to CIELCh 81, 11.308, 39.176 is called "color". The color property can be set on classes, ids or directly on the HTML element.

This example shows how text in the color `rgb(223, 195, 188)` looks like.

```
.text, #text, p{  
    color:rgb(223, 195, 188)  
}
```

If you want to add a text shadow in that color use the text-shadow property, you can generate a text shadow directly with our [CSS Text Shadow Generator](#).

Here you see how black text with a 4 pixel rgb(223, 195, 188) colored shadow looks like.

```
.shadow{ text-shadow: 4px 4px 2px rgb(223, 195, 188) }
```

Border

The CSS property to change the border of an element to CIELCh 81, 11.308, 39.176 is called "border". The border property can be set on classes, ids or directly on the HTML element.

This example shows the color as border, it can be applied via the CSS property "border" or "border-color".

```
.border, #border, table{ border:4px solid rgb(223, 195, 188) }
```

If only the border color should be changed use the property `border-color`.

```
.border{ border-color:rgb(223, 195, 188) }
```

If you want to add a box shadow in that color use:

Here you see how a box with a 4 pixel `rgb(223, 195, 188)` colored shadow looks like.

```
.boxshadow{ -moz-box-shadow:4px 4px 4px  
4px rgb(223, 195, 188); -webkit-box-  
shadow:4px 4px 4px 4px rgb(223, 195, 188);  
box-shadow:4px 4px 4px 4px rgb(223, 195,  
188) }
```

Background

The CSS property to change the background color of an element to CIELCh 81, 11.308, 39.176 is called "background". The background property can be set on classes, ids or directly on the HTML element.

```
.background, #background, body{  
background: rgb(223, 195, 188) }
```

If only the background color should be changed can be used:

```
.background{ background-color: rgb(223,  
195, 188) }
```

This example shows the color as background, it is applied via the CSS property "background".

To optimize and compress your CSS code, you can use our [online CSS compressor and optimizer](#) based on csstidy. If you want to create a linear or radial gradient as background or border, check our [CSS Gradient Generator](#).

Hey! You found this booklet interesting? Support Converting Colors with the new Membership Option!

The pro membership hides all ads, plus gives you double the colors in the color bucket, and more awesome pro features!

[Learn more, Memberships starting at \\$2.50/m!](#)

**Follow me
on Twitter!**

@ConvertingColor