

Converting Colors

CIELCh(81, 11.238, 2.602)

Have a look what the booklet for
CIELCh(81, 11.238, 2.602) contains.

CIELCh(81, 11.409, 1.377)	3
<i>Conversions</i>	4
<i>Details</i>	6
<i>Harmonies</i>	11
<i>Previews</i>	20
<i>Color Blindness Simulation</i>	23
<i>CSS Examples</i>	26

Color

CIELCh(81, 11.409, 1.377)

Conversions

Conversions Part 1

Format	Color
Hex	DFC2C9
RGB	223, 194, 201
RGB Percent	87%, 76%, 79%
CMY	0.1256, 0.2393, 0.2119
CMYK	0.00, 0.13, 0.10, 0.13
HSL	346°, 31%, 82%
HSV	346°, 13%, 87%
XYZ	60.2484, 58.4711, 63.3525
YIQ	203.4690, 15.0370, 8.3250

Conversions

Conversions Part 2

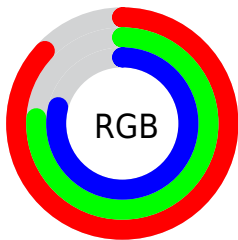
Format	Color
R _Y B	223, 194, 201
Decimal	14664393
CIE Lab	81.00, 11.41, 0.27
CIE LCh	81, 11.409, 1.377
Yxy	58.4711, 0.3309, 0.3211
Android (android.graphics.Color)	4292854473 (0xFFDFC2C9)
YUV	203.4690, -1.2172, 17.1287
Hunter-Lab	76.4664, 6.8252, 4.4047

Details

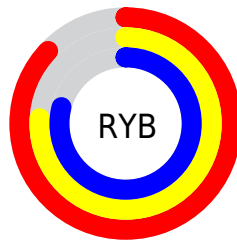
The CIELCh color **81, 11.409, 1.377** is a light color, and the websafe version is hex **FFCCCC**. A complement of this color would be **87, 10.900, 179.005**, and the grayscale version is **82, 0.010, 296.813**.

A 20% lighter version of the original color is **99, 2.492, 324.405**, and **61, 11.741, 1.128** is the 20% darker color. If you saturate the color by 10%, you get **75, 20.631, 2.576**, and if you desaturate by 10%, it is **87, 2.575, 0.223**.

Distribution



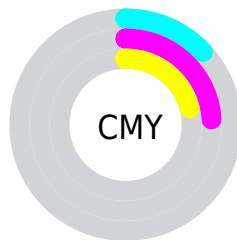
- Red (87%)
- Green (76%)
- Blue (79%)



- Red (87%)
- Yellow (76%)
- Blue (79%)



- Cyan (0%)
- Magenta (13%)
- Yellow (10%)
- Black (13%)



- Cyan (13%)
- Magenta (24%)
- Yellow (21%)

Brightness & Saturation Gradients

These gradients show how the CIELCh color 81, 11.409, 1.377 changes by changing the brightness by 10 percent. The first figure shows a shift by +10% for each color and the second figure -10%.

Similar to the brightness gradients but the following saturation gradients show a change of the CIELCh color 81, 11.409, 1.377 by changing the saturation by 10% instead.

81, 11.409, 1.377

81, 11.409, 1.377

100, 11.409, 1.377

71, 11.409, 1.377

61, 11.409, 1.377

51, 11.409, 1.377

41, 11.409, 1.377

31, 11.409, 1.377

21, 11.409, 1.377

11, 11.409, 1.377

1, 11.409, 1.377

0, 11.409, 1.377

81, 11.409, 1.377

81, 11.409, 1.377

75, 20.631, 2.576

87, 2.575, 0.223

70, 30.155, 3.980

93, 5.828, 179.658

64, 39.804, 5.683

98, 11.061,
190.045

59, 49.302, 7.793

98, 10.835,
198.783

55, 58.280, 10.452

52, 66.333, 13.823

49, 73.168, 18.049

48, 78.768, 23.143

47, 82.275, 26.955

Harmonies

Complementary

The Complementary color scheme is a pair of colors which are on the opposite of each other on the color wheel.



81, 11.409, 1.377



87, 10.900, 179.005

Rectangle

The Rectangle color scheme consists of four colors that form a rectangle on the color wheel.



81, 11.409, 1.377



81, 11.409, 51.377



81, 11.409, 181.377



81, 11.409, 231.377

Sweetspot

The Sweet Spot groups the original color and five complimentary colors.



81, 11.407, 1.384



97, 3.831, 0.372



81, 17.322, 317.841



51, 2.727, 0.469



0, 0.000, 0.000



53, 0.007, 296.813

Same Dimension

The Same Dimension uses a secret algorithm to generate beautiful new colors.



81, 11.407, 1.384



89, 15.762, 1.738



83, 9.045, 44.818



44, 4.965, 0.993



37, 68.434, 25.976



6, 25.291, 10.646

Inverse Universe

The Inverse Universe completely reimagines the original color for something new.



81, 11.407, 1.384



89, 15.762, 1.738



85, 8.362, 226.208



44, 4.965, 0.993



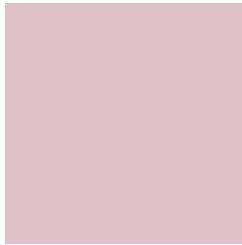
37, 68.434, 25.976



6, 25.291, 10.646

Previews

White Background



This preview shows how the CIELCh color 81, 11.409, 1.377 looks on a white background.

Color Contrast Check

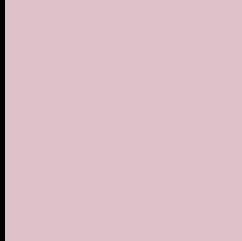
Large Text (above 18pt) WCAG AA × Fail

Any Text WCAG AA × Fail

Large Text (above 18pt) WCAG AAA × Fail

Any Text WCAG AAA × Fail

Black Background



This preview shows how the CIELCh color 81, 11.409, 1.377 looks on a black background.

Color Contrast Check

Large Text (above 18pt) WCAG AA ✓ Pass

Any Text WCAG AA ✓ Pass

Large Text (above 18pt) WCAG AAA ✓ Pass

Any Text WCAG AAA ✓ Pass

If you want to check with other color combinations, try the [Color Contrast Checker](#).

CIELCh 81, 11.409, 1.377

Background



This preview shows how black text looks on a background with the CIELCh color 81, 11.409, 1.377.



This preview shows how white text looks on a background with the CIELCh color 81, 11.409, 1.377.

Color Blindness Simulation

Color vision deficiency is a very complex topic, and I could not describe the different causes any better than Wikipedia does, so if you want to learn more, you should check out their [article about color blindness](#).

Dichromacy



Original Color

81, 11.409, 1.377

Protanopia

81, 3.051, 318.849

Deuteranopia

81, 10.173, 2.020



Tritanopia
81, 13.908, 345.701

Trichromacy



Original Color
81, 11.409, 1.377

Protanomaly
81, 5.757, 346.225

Deuteranomaly
81, 10.532, 2.698

Tritanomaly
81, 13.109, 351.485

Monochromacy



Original Color
81, 11.409, 1.377

Achromatopsia
82, 0.010, 296.813

Achromatomaly
81, 3.836, 3.544

CSS Examples

Text

The CSS property to change the color of the text to CIELCh 81, 11.409, 1.377 is called "color". The color property can be set on classes, ids or directly on the HTML element.

This example shows how text in the color `rgb(223, 194, 201)` looks like.

```
.text, #text, p{  
    color:rgb(223, 194, 201)  
}
```

If you want to add a text shadow in that color use the text-shadow property, you can generate a text shadow directly with our [CSS Text Shadow Generator](#).

Here you see how black text with a 4 pixel rgb(223, 194, 201) colored shadow looks like.

```
.shadow{ text-shadow: 4px 4px 2px rgb(223, 194, 201) }
```

Border

The CSS property to change the border of an element to CIELCh 81, 11.409, 1.377 is called "border". The border property can be set on classes, ids or directly on the HTML element.

This example shows the color as border, it can be applied via the CSS property "border" or "border-color".

```
.border, #border, table{ border:4px solid rgb(223, 194, 201) }
```

If only the border color should be changed use the property `border-color`.

```
.border{ border-color:rgb(223, 194, 201) }
```

If you want to add a box shadow in that color use:

Here you see how a box with a 4 pixel `rgb(223, 194, 201)` colored shadow looks like.

```
.boxshadow{ -moz-box-shadow:4px 4px 4px 4px rgb(223, 194, 201); -webkit-box-shadow:4px 4px 4px 4px rgb(223, 194, 201); box-shadow:4px 4px 4px 4px rgb(223, 194, 201) }
```

Background

The CSS property to change the background color of an element to CIELCh 81, 11.409, 1.377 is called "background". The background property can be set on classes, ids or directly on the HTML element.

```
.background, #background, body{  
background: rgb(223, 194, 201) }
```

If only the background color should be changed can be used:

```
.background{ background-color: rgb(223,  
194, 201) }
```

This example shows the color as background, it is applied via the CSS property "background".

To optimize and compress your CSS code, you can use our [online CSS compressor and optimizer](#) based on csstidy. If you want to create a linear or radial gradient as background or border, check our [CSS Gradient Generator](#).

Hey! You found this booklet interesting? Support Converting Colors with the new Membership Option!

The pro membership hides all ads, plus gives you double the colors in the color bucket, and more awesome pro features!

[Learn more, Memberships starting at \\$2.50/m!](#)

**Follow me
on Twitter!**

@ConvertingColor