

# Converting Colors

CIELCh(81, 11.632, 51.663)

Have a look what the booklet for  
CIELCh(81, 11.632, 51.663) contains.

<b>CIELCh(81, 11.850, 52.274)</b> .....	3
<b><i>Conversions</i></b> .....	4
<b><i>Details</i></b> .....	6
<b><i>Harmonies</i></b> .....	11
<b><i>Previews</i></b> .....	20
<b><i>Color Blindness Simulation</i></b> .....	23
<b><i>CSS Examples</i></b> .....	26

# Color

**CIELCh(81, 11.850, 52.274)**

# Conversions

## Conversions Part 1

Format	Color
Hex	DEC4B8
RGB	222, 196, 184
RGB Percent	87%, 77%, 72%
CMY	0.1294, 0.2313, 0.2784
CMYK	0.00, 0.12, 0.17, 0.13
HSL	19°, 37%, 80%
HSV	19°, 17%, 87%
XYZ	58.5168, 58.4711, 53.5498
YIQ	202.4060, 19.3480, 1.7800

# Conversions

## Conversions Part 2

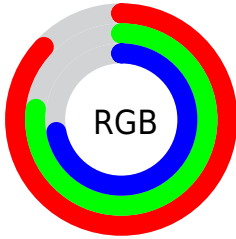
Format	Color
RYB	222, 202, 184
Decimal	14599352
CIELab	81.00, 7.25, 9.37
CIELCh	81, 11.850, 52.274
Yxy	58.4711, 0.3431, 0.3429
Android (android.graphics.Color)	4292789432 (0xFFDEC4B8)
YUV	202.4060, -9.0742, 17.1839
Hunter-Lab	76.4664, 2.7831, 12.0054

# Details

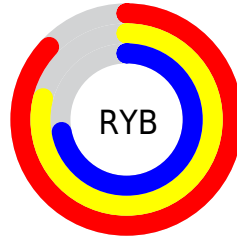
The CIELCh color  $81, 11.850, 52.274$  is a light color, and the websafe version is hex `CCCCCC`. A complement of this color would be  $83, 10.789, 235.124$ , and the grayscale version is  $82, 0.010, 296.813$ .

A 20% lighter version of the original color is  $99, 6.620, 103.477$ , and  $61, 12.040, 50.849$  is the 20% darker color. If you saturate the color by 10%, you get  $77, 19.497, 51.680$ , and if you desaturate by 10%, it is  $85, 4.747, 52.905$ .

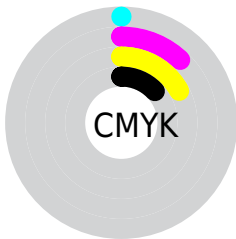
# Distribution



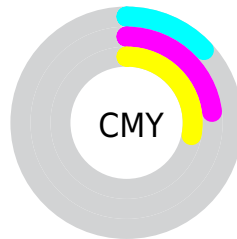
- Red (87%)
- Green (77%)
- Blue (72%)



- Red (87%)
- Yellow (79%)
- Blue (72%)



- Cyan (0%)
- Magenta (12%)
- Yellow (17%)
- Black (13%)



- Cyan (13%)
- Magenta (23%)
- Yellow (28%)

# Brightness & Saturation Gradients


These gradients show how the CIELCh color 81, 11.850, 52.274 changes by changing the brightness by 10 percent. The first figure shows a shift by +10% for each color and the second figure -10%.

Similar to the brightness gradients but the following saturation gradients show a change of the CIELCh color 81, 11.850, 52.274 by changing the saturation by 10% instead.



 81, 11.850, 52.274

 81, 11.850, 52.274

 100, 11.850,  
52.274

 71, 11.850, 52.274

 61, 11.850, 52.274

 51, 11.850, 52.274

 41, 11.850, 52.274

 31, 11.850, 52.274

 21, 11.850, 52.274

 11, 11.850, 52.274

 1, 11.850, 52.274

 0, 11.850, 52.274

81, 11.850, 52.274

81, 11.850, 52.274

77, 19.497, 51.680

85, 4.747, 52.905

73, 27.731, 51.147

90, 1.863, 234.036

69, 36.573, 50.711

94, 8.034, 234.570

65, 45.995, 50.382

98, 11.152,  
198.761

61, 55.877, 50.140

58, 65.897, 49.892

55, 75.328, 49.385

52, 82.843, 48.139

52, 84.799, 47.802

# Harmonies

# Complementary

The Complementary color scheme is a pair of colors which are on the opposite of each other on the color wheel.



81, 11.850, 52.274



83, 10.789, 235.124

# Rectangle

The Rectangle color scheme consists of four colors that form a rectangle on the color wheel.



81, 11.850, 52.274



81, 11.850, 102.274



81, 11.850, 232.274



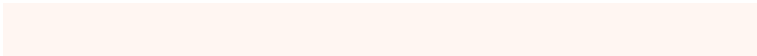
81, 11.850, 282.274

# Sweetspot

The Sweet Spot groups the original color and five complimentary colors.



81, 11.850, 52.287



98, 3.702, 53.006



79, 19.848, 335.465



52, 2.533, 52.976



0, 0.000, 0.000



53, 0.007, 296.813



# Same Dimension

The Same Dimension uses a secret algorithm to generate beautiful new colors.



81, 11.850, 52.287



90, 16.517, 52.035



86, 16.131, 98.427



45, 3.854, 52.770



41, 70.873, 48.336



9, 20.801, 41.154



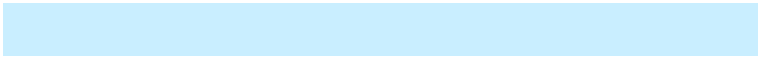


# Inverse Universe

The Inverse Universe completely reimagines the original color for something new.



83, 10.789, 235.124



92, 14.671, 235.579



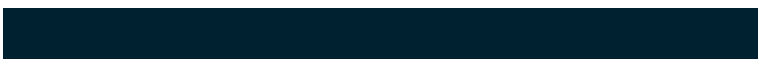
78, 16.438, 282.593



45, 3.670, 234.394



48, 37.978, 258.825

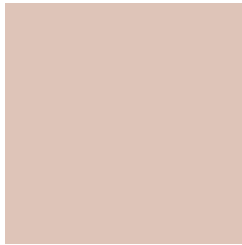


11, 14.458, 249.026



# Previews

## White Background



This preview shows how the CIELCh color 81, 11.850, 52.274 looks on a white background.

## Color Contrast Check

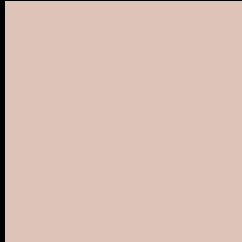
Large Text (above 18pt) WCAG AA × Fail

Any Text WCAG AA × Fail

Large Text (above 18pt) WCAG AAA × Fail

Any Text WCAG AAA × Fail

# Black Background



This preview shows how the CIELCh color 81, 11.850, 52.274 looks on a black background.

## Color Contrast Check

Large Text (above 18pt) WCAG AA ✓ Pass

Any Text WCAG AA ✓ Pass

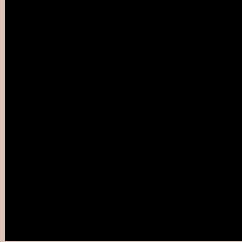
Large Text (above 18pt) WCAG AAA ✓ Pass

Any Text WCAG AAA ✓ Pass

If you want to check with other color combinations, try the [Color Contrast Checker](#).

# CIELCh 81, 11.850, 52.274

## Background



This preview shows how black text looks on a background with the CIELCh color 81, 11.850, 52.274.



This preview shows how white text looks on a background with the CIELCh color 81, 11.850, 52.274.

# Color Blindness Simulation

Color vision deficiency is a very complex topic, and I could not describe the different causes any better than Wikipedia does, so if you want to learn more, you should check out their [article about color blindness](#).

## Dichromacy



### Original Color

81, 11.850, 52.274

### Protanopia

81, 8.350, 90.988

### Deuteranopia

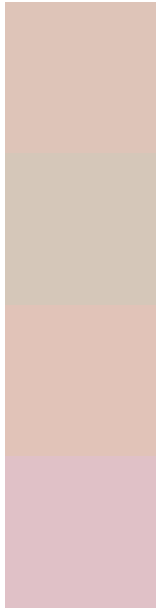
81, 13.798, 42.698



**Tritanopia**  
81, 14.817, 345.726



# Trichromacy



**Original Color**  
81, 11.850, 52.274

**Protanomaly**  
81, 9.118, 73.773

**Deuteranomaly**  
81, 12.952, 46.728

**Tritanomaly**  
81, 12.006, 5.040

# Monochromacy



**Original Color**  
81, 11.850, 52.274

**Achromatopsia**  
81, 0.010, 296.813

**Achromatomaly**  
81, 4.250, 57.947

# CSS Examples

## Text

The CSS property to change the color of the text to CIELCh 81, 11.850, 52.274 is called "color". The color property can be set on classes, ids or directly on the HTML element.

This example shows how text in the color `rgb(222, 196, 184)` looks like.

```
.text, #text, p{  
    color:rgb(222, 196, 184)  
}
```

If you want to add a text shadow in that color use the text-shadow property, you can generate a text shadow directly with our [CSS Text Shadow Generator](#).

Here you see how black text with a 4 pixel rgb(222, 196, 184) colored shadow looks like.

```
.shadow{ text-shadow: 4px 4px 2px rgb(222, 196, 184) }
```

## Border

The CSS property to change the border of an element to CIELCh 81, 11.850, 52.274 is called "border". The border property can be set on classes, ids or directly on the HTML element.

This example shows the color as border, it can be applied via the CSS property "border" or "border-color".

```
.border, #border, table{ border:4px solid rgb(222, 196, 184) }
```

If only the border color should be changed use the property `border-color`.

```
.border{ border-color:rgb(222, 196, 184) }
```

If you want to add a box shadow in that color use:

Here you see how a box with a 4 pixel `rgb(222, 196, 184)` colored shadow looks like.

```
.boxshadow{ -moz-box-shadow:4px 4px 4px 4px rgb(222, 196, 184); -webkit-box-shadow:4px 4px 4px 4px rgb(222, 196, 184); box-shadow:4px 4px 4px 4px rgb(222, 196, 184) }
```

# Background

The CSS property to change the background color of an element to CIELCh 81, 11.850, 52.274 is called "background". The background property can be set on classes, ids or directly on the HTML element.

```
.background, #background, body{  
background: rgb(222, 196, 184) }
```

If only the background color should be changed can be used:

```
.background{ background-color: rgb(222,  
196, 184) }
```

This example shows the color as background, it is applied via the CSS property "background".

To optimize and compress your CSS code, you can use our [online CSS compressor and optimizer](#) based on csstidy. If you want to create a linear or radial gradient as background or border, check our [CSS Gradient Generator](#).

Hey! You found this booklet interesting? Support Converting Colors with the new Membership Option!

The pro membership hides all ads, plus gives you double the colors in the color bucket, and more awesome pro features!

**[Learn more, Memberships starting at \\$2.50/m!](#)**

**Follow me  
on Twitter!**

@ConvertingColor