

Converting Colors

CIELCh(81, 12.036, 38.013)

Have a look what the booklet for
CIELCh(81, 12.036, 38.013) contains.

CIELCh(81, 12.049, 38.013)	3
<i>Conversions</i>	4
<i>Details</i>	6
<i>Harmonies</i>	11
<i>Previews</i>	20
<i>Color Blindness Simulation</i>	23
<i>CSS Examples</i>	26

Color

CIELCh(81, 12.049, 38.013)

Conversions

Conversions Part 1

Format	Color
Hex	E1C3BC
RGB	225, 195, 188
RGB Percent	88%, 76%, 74%
CMY	0.1189, 0.2365, 0.2639
CMYK	0.00, 0.13, 0.16, 0.12
HSL	11°, 38%, 81%
HSV	11°, 16%, 88%
XYZ	59.4471, 58.4711, 55.5613
YIQ	203.1720, 20.1270, 4.1830

Conversions

Conversions Part 2

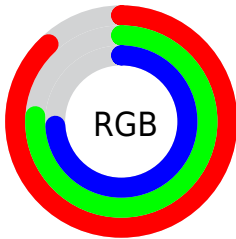
Format	Color
R _Y B	225, 197, 188
Decimal	14795708
CIE Lab	81.00, 9.49, 7.42
CIE LCh	81, 12.049, 38.013
Yxy	58.4711, 0.3427, 0.3370
Android (android.graphics.Color)	4292985788 (0xFFE1C3BC)
YUV	203.1720, -7.4798, 19.1432
Hunter-Lab	76.4664, 4.9547, 10.4457

Details

The CIELCh color **81, 12.049, 38.013** is a light color, and the websafe version is hex **FFCCCC**. A complement of this color would be **85, 10.816, 218.766**, and the grayscale version is **82, 0.010, 296.813**.

A 20% lighter version of the original color is **99, 4.181, 95.099**, and **61, 11.937, 36.701** is the 20% darker color. If you saturate the color by 10%, you get **76, 20.197, 38.097**, and if you desaturate by 10%, it is **86, 4.537, 38.017**.

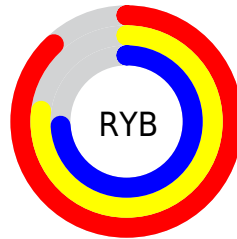
Distribution



Red (88%)

Green (76%)

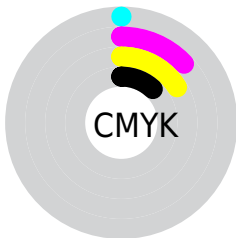
Blue (74%)



Red (88%)

Yellow (77%)

Blue (74%)

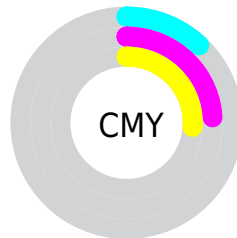


Cyan (0%)

Magenta (13%)

Yellow (16%)

Black (12%)



Cyan (12%)

Magenta (24%)

Yellow (26%)


Brightness & Saturation Gradients

These gradients show how the CIELCh color 81, 12.049, 38.013 changes by changing the brightness by 10 percent. The first figure shows a shift by +10% for each color and the second figure -10%.

Similar to the brightness gradients but the following saturation gradients show a change of the CIELCh color 81, 12.049, 38.013 by changing the saturation by 10% instead.

 81, 12.049, 38.013

 81, 12.049, 38.013

 100, 12.049,
38.013

 71, 12.049, 38.013

 61, 12.049, 38.013

 51, 12.049, 38.013

 41, 12.049, 38.013

 31, 12.049, 38.013

 21, 12.049, 38.013

 11, 12.049, 38.013

 1, 12.049, 38.013

 0, 12.049, 38.013

81, 12.049, 38.013

81, 12.049, 38.013

76, 20.197, 38.097

86, 4.537, 38.017

71, 29.022, 38.320

91, 2.391, 218.565

67, 38.533, 38.742

96, 8.779, 218.266

62, 48.684, 39.402

98, 10.274,
198.821

58, 59.332, 40.313

55, 70.150, 41.412

52, 80.399, 42.442

50, 88.533, 42.776

49, 90.952, 42.890

Harmonies

Complementary

The Complementary color scheme is a pair of colors which are on the opposite of each other on the color wheel.



81, 12.049, 38.013



85, 10.816, 218.766

Rectangle

The Rectangle color scheme consists of four colors that form a rectangle on the color wheel.



81, 12.049, 38.013



81, 12.049, 88.013



81, 12.049, 218.013



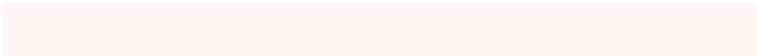
81, 12.049, 268.013

Sweetspot

The Sweet Spot groups the original color and five complimentary colors.



81, 12.048, 38.025



97, 3.867, 37.997



80, 20.919, 330.961



51, 2.646, 38.009



0, 0.000, 0.000



53, 0.007, 296.813

Same Dimension

The Same Dimension uses a secret algorithm to generate beautiful new colors.



81, 12.048, 38.025



89, 16.472, 38.037



86, 13.943, 90.361



44, 4.032, 38.026



38, 75.370, 43.265



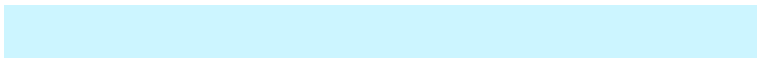
8, 22.487, 31.512

Inverse Universe

The Inverse Universe completely reimagines the original color for something new.



85, 10.816, 218.766



94, 14.400, 218.918



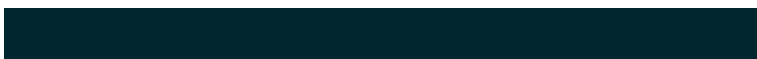
80, 13.942, 274.712



46, 3.800, 218.559



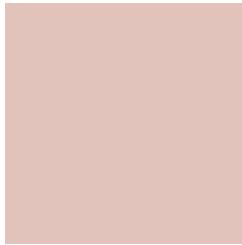
55, 33.105, 233.083



14, 13.542, 226.382

Previews

White Background



This preview shows how the CIELCh color 81, 12.049, 38.013 looks on a white background.

Color Contrast Check

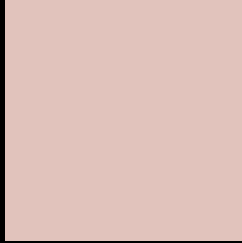
Large Text (above 18pt) WCAG AA × Fail

Any Text WCAG AA × Fail

Large Text (above 18pt) WCAG AAA × Fail

Any Text WCAG AAA × Fail

Black Background



This preview shows how the CIELCh color 81, 12.049, 38.013 looks on a black background.

Color Contrast Check

Large Text (above 18pt) WCAG AA ✓ Pass

Any Text WCAG AA ✓ Pass

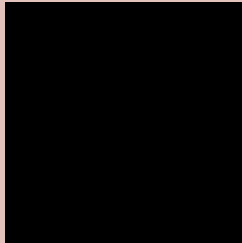
Large Text (above 18pt) WCAG AAA ✓ Pass

Any Text WCAG AAA ✓ Pass

If you want to check with other color combinations, try the [Color Contrast Checker](#).

CIELCh 81, 12.049, 38.013

Background



This preview shows how black text looks on a background with the CIELCh color 81, 12.049, 38.013.

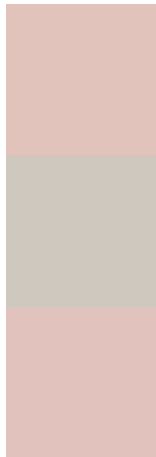


This preview shows how white text looks on a background with the CIELCh color 81, 12.049, 38.013.

Color Blindness Simulation

Color vision deficiency is a very complex topic, and I could not describe the different causes any better than Wikipedia does, so if you want to learn more, you should check out their [article about color blindness](#).

Dichromacy



Original Color

81, 12.049, 38.013

Protanopia

81, 5.420, 80.841

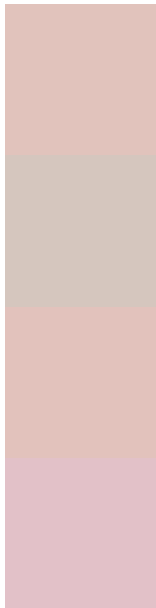
Deuteranopia

81, 12.642, 34.750



Tritanopia
81, 15.162, 349.083

Trichromacy



Original Color
81, 12.049, 38.013

Protanomaly
81, 7.053, 56.518

Deuteranomaly
81, 12.642, 34.750

Tritanomaly
81, 12.861, 3.727

Monochromacy



Original Color
81, 12.049, 38.013

Achromatopsia
82, 0.010, 296.813

Achromatomaly
81, 4.369, 40.843

CSS Examples

Text

The CSS property to change the color of the text to CIELCh 81, 12.049, 38.013 is called "color". The color property can be set on classes, ids or directly on the HTML element.

This example shows how text in the color `rgb(225, 195, 188)` looks like.

```
.text, #text, p{  
    color:rgb(225, 195, 188)  
}
```

If you want to add a text shadow in that color use the text-shadow property, you can generate a text shadow directly with our [CSS Text Shadow Generator](#).

Here you see how black text with a 4 pixel rgb(225, 195, 188) colored shadow looks like.

```
.shadow{ text-shadow: 4px 4px 2px rgb(225, 195, 188) }
```

Border

The CSS property to change the border of an element to CIELCh 81, 12.049, 38.013 is called "border". The border property can be set on classes, ids or directly on the HTML element.

This example shows the color as border, it can be applied via the CSS property "border" or "border-color".

```
.border, #border, table{ border:4px solid rgb(225, 195, 188) }
```

If only the border color should be changed use the property `border-color`.

```
.border{ border-color:rgb(225, 195, 188) }
```

If you want to add a box shadow in that color use:

Here you see how a box with a 4 pixel `rgb(225, 195, 188)` colored shadow looks like.

```
.boxshadow{ -moz-box-shadow:4px 4px 4px  
4px rgb(225, 195, 188); -webkit-box-  
shadow:4px 4px 4px 4px rgb(225, 195, 188);  
box-shadow:4px 4px 4px 4px rgb(225, 195,  
188) }
```

Background

The CSS property to change the background color of an element to CIELCh 81, 12.049, 38.013 is called "background". The background property can be set on classes, ids or directly on the HTML element.

```
.background, #background, body{  
background: rgb(225, 195, 188) }
```

If only the background color should be changed can be used:

```
.background{ background-color: rgb(225,  
195, 188) }
```

This example shows the color as background, it is applied via the CSS property "background".

To optimize and compress your CSS code, you can use our [online CSS compressor and optimizer](#) based on csstidy. If you want to create a linear or radial gradient as background or border, check our [CSS Gradient Generator](#).

Hey! You found this booklet interesting? Support Converting Colors with the new Membership Option!

The pro membership hides all ads, plus gives you double the colors in the color bucket, and more awesome pro features!

[Learn more, Memberships starting at \\$2.50/m!](#)

**Follow me
on Twitter!**

@ConvertingColor