

Converting Colors

CIELCh(81, 12.296, 35.070)

Have a look what the booklet for
CIELCh(81, 12.296, 35.070) contains.

CIELCh(81, 12.263, 35.181)	3
<i>Conversions</i>	4
<i>Details</i>	6
<i>Harmonies</i>	11
<i>Previews</i>	20
<i>Color Blindness Simulation</i>	23
<i>CSS Examples</i>	26

Color

CIELCh(81, 12.263, 35.181)

Conversions

Conversions Part 1

Format	Color
Hex	E1C2BC
RGB	225, 194, 188
RGB Percent	88%, 76%, 74%
CMY	0.1161, 0.2377, 0.2613
CMYK	0.00, 0.14, 0.16, 0.12
HSL	10°, 38%, 81%
HSV	10°, 16%, 88%
XYZ	59.6684, 58.4711, 55.9322
YIQ	202.5850, 20.4020, 4.7060

Conversions

Conversions Part 2

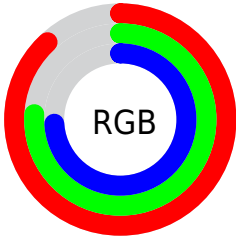
Format	Color
R _Y B	225, 195, 188
Decimal	14795452
CIE Lab	81.00, 10.02, 7.07
CIE LCh	81, 12.263, 35.181
Yxy	58.4711, 0.3428, 0.3359
Android (android.graphics.Color)	4292985532 (0xFFE1C2BC)
YUV	202.5850, -7.1904, 19.6580
Hunter-Lab	76.4664, 5.4713, 10.1582

Details

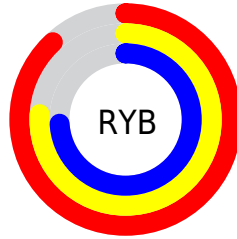
The CIELCh color **81, 12.263, 35.181** is a light color, and the websafe version is hex **FFCCCC**. A complement of this color would be **86, 10.994, 215.497**, and the grayscale version is **82, 0.010, 296.813**.

A 20% lighter version of the original color is **99, 3.809, 88.002**, and **61, 12.183, 33.726** is the 20% darker color. If you saturate the color by 10%, you get **76, 20.577, 35.411**, and if you desaturate by 10%, it is **86, 4.599, 35.051**.

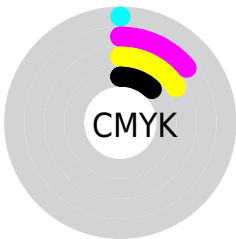
Distribution



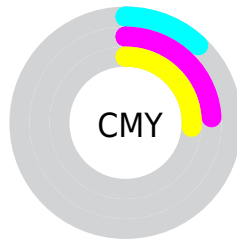
- Red (88%)
- Green (76%)
- Blue (74%)



- Red (88%)
- Yellow (76%)
- Blue (74%)



- Cyan (0%)
- Magenta (14%)
- Yellow (16%)
- Black (12%)



- Cyan (12%)
- Magenta (24%)
- Yellow (26%)

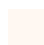
Brightness & Saturation Gradients

These gradients show how the CIELCh color 81, 12.263, 35.181 changes by changing the brightness by 10 percent. The first figure shows a shift by +10% for each color and the second figure -10%.

Similar to the brightness gradients but the following saturation gradients show a change of the CIELCh color 81, 12.263, 35.181 by changing the saturation by 10% instead.

 81, 12.263, 35.181

 81, 12.263, 35.181

 100, 12.263,
35.181

 71, 12.263, 35.181

 61, 12.263, 35.181

 51, 12.263, 35.181

 41, 12.263, 35.181

 31, 12.263, 35.181

 21, 12.263, 35.181

 11, 12.263, 35.181

 1, 12.263, 35.181

 0, 12.263, 35.181

81, 12.263, 35.181

81, 12.263, 35.181

76, 20.577, 35.411

86, 4.599, 35.051

71, 29.579, 35.800

92, 2.464, 215.472

66, 39.268, 36.412

97, 8.883, 212.191

62, 49.586, 37.294

98, 10.043,
198.837

58, 60.376, 38.469

54, 71.296, 39.879

51, 81.598, 41.263

49, 89.694, 41.955

49, 92.084, 42.191

Harmonies

Complementary

The Complementary color scheme is a pair of colors which are on the opposite of each other on the color wheel.



81, 12.263, 35.181



86, 10.994, 215.497

Rectangle

The Rectangle color scheme consists of four colors that form a rectangle on the color wheel.



81, 12.263, 35.181



81, 12.263, 85.181



81, 12.263, 215.181



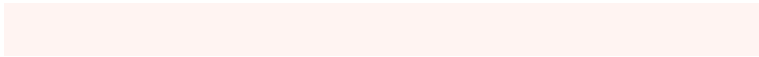
81, 12.263, 265.181

Sweetspot

The Sweet Spot groups the original color and five complimentary colors.



81, 12.262, 35.193



97, 3.935, 35.015



80, 21.416, 329.820



51, 2.693, 35.035



0, 0.000, 0.000



53, 0.007, 296.813

Same Dimension

The Same Dimension uses a secret algorithm to generate beautiful new colors.



81, 12.262, 35.193



88, 16.765, 35.258



86, 13.513, 87.667



44, 4.103, 35.100



38, 76.158, 42.526



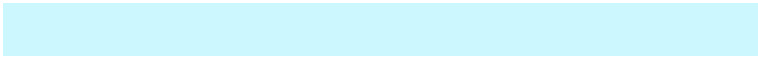
7, 22.879, 29.824

Inverse Universe

The Inverse Universe completely reimagines the original color for something new.



86, 10.994, 215.497



94, 14.629, 215.593



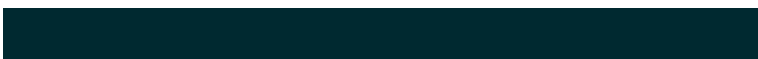
81, 13.427, 272.082



46, 3.863, 215.390



56, 32.961, 227.198



14, 13.607, 221.531

Previews

White Background



This preview shows how the CIELCh color 81, 12.263, 35.181 looks on a white background.

Color Contrast Check

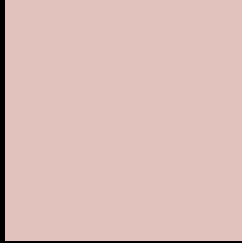
Large Text (above 18pt) WCAG AA × Fail

Any Text WCAG AA × Fail

Large Text (above 18pt) WCAG AAA × Fail

Any Text WCAG AAA × Fail

Black Background



This preview shows how the CIELCh color 81, 12.263, 35.181 looks on a black background.

Color Contrast Check

Large Text (above 18pt) WCAG AA ✓ Pass

Any Text WCAG AA ✓ Pass

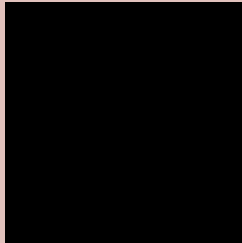
Large Text (above 18pt) WCAG AAA ✓ Pass

Any Text WCAG AAA ✓ Pass

If you want to check with other color combinations, try the [Color Contrast Checker](#).

CIELCh 81, 12.263, 35.181

Background



This preview shows how black text looks on a background with the CIELCh color 81, 12.263, 35.181.



This preview shows how white text looks on a background with the CIELCh color 81, 12.263, 35.181.

Color Blindness Simulation

Color vision deficiency is a very complex topic, and I could not describe the different causes any better than Wikipedia does, so if you want to learn more, you should check out their [article about color blindness](#).

Dichromacy





Tritanopia
81, 15.479, 349.847

Trichromacy



Original Color
81, 12.263, 35.181

Protanomaly
81, 7.062, 51.308

Deuteranomaly
81, 12.642, 34.750

Tritanomaly
81, 13.225, 4.238

Monochromacy



Original Color
81, 12.263, 35.181

Achromatopsia
82, 0.010, 296.813

Achromatomaly
81, 4.202, 34.140

CSS Examples

Text

The CSS property to change the color of the text to CIELCh 81, 12.263, 35.181 is called "color". The color property can be set on classes, ids or directly on the HTML element.

This example shows how text in the color `rgb(225, 194, 188)` looks like.

```
.text, #text, p{  
    color:rgb(225, 194, 188)  
}
```

If you want to add a text shadow in that color use the text-shadow property, you can generate a text shadow directly with our [CSS Text Shadow Generator](#).

Here you see how black text with a 4 pixel rgb(225, 194, 188) colored shadow looks like.

```
.shadow{ text-shadow: 4px 4px 2px rgb(225, 194, 188) }
```

Border

The CSS property to change the border of an element to CIELCh 81, 12.263, 35.181 is called "border". The border property can be set on classes, ids or directly on the HTML element.

This example shows the color as border, it can be applied via the CSS property "border" or "border-color".

```
.border, #border, table{ border:4px solid rgb(225, 194, 188) }
```

If only the border color should be changed use the property `border-color`.

```
.border{ border-color:rgb(225, 194, 188) }
```

If you want to add a box shadow in that color use:

Here you see how a box with a 4 pixel `rgb(225, 194, 188)` colored shadow looks like.

```
.boxshadow{ -moz-box-shadow:4px 4px 4px 4px rgb(225, 194, 188); -webkit-box-shadow:4px 4px 4px 4px rgb(225, 194, 188); box-shadow:4px 4px 4px 4px rgb(225, 194, 188) }
```

Background

The CSS property to change the background color of an element to CIELCh 81, 12.263, 35.181 is called "background". The background property can be set on classes, ids or directly on the HTML element.

```
.background, #background, body{  
background: rgb(225, 194, 188) }
```

If only the background color should be changed can be used:

```
.background{ background-color: rgb(225,  
194, 188) }
```

This example shows the color as background, it is applied via the CSS property "background".

To optimize and compress your CSS code, you can use our [online CSS compressor and optimizer](#) based on csstidy. If you want to create a linear or radial gradient as background or border, check our [CSS Gradient Generator](#).

Hey! You found this booklet interesting? Support Converting Colors with the new Membership Option!

The pro membership hides all ads, plus gives you double the colors in the color bucket, and more awesome pro features!

[Learn more, Memberships starting at \\$2.50/m!](#)

**Follow me
on Twitter!**

@ConvertingColor