

Converting Colors

CIELCh(81, 12.928, 11.033)

Have a look what the booklet for
CIELCh(81, 12.928, 11.033) contains.

CIELCh(81, 12.941, 11.040)	3
<i>Conversions</i>	4
<i>Details</i>	6
<i>Harmonies</i>	11
<i>Previews</i>	20
<i>Color Blindness Simulation</i>	23
<i>CSS Examples</i>	26

Color

CIELCh(81, 12.941, 11.040)

Conversions

Conversions Part 1

Format	Color
Hex	E3C1C5
RGB	227, 193, 197
RGB Percent	89%, 76%, 77%
CMY	0.1100, 0.2433, 0.2276
CMYK	0.00, 0.15, 0.13, 0.11
HSL	353°, 38%, 82%
HSV	353°, 15%, 89%
XYZ	60.7954, 58.4711, 60.8767
YIQ	203.6220, 18.9800, 8.4520

Conversions

Conversions Part 2

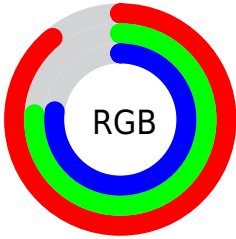
Format	Color
R _Y B	227, 193, 197
Decimal	14926277
CIE Lab	81.00, 12.70, 2.48
CIE LCh	81, 12.941, 11.040
Yxy	58.4711, 0.3375, 0.3246
Android (android.graphics.Color)	4293116357 (0xFFE3C1C5)
YUV	203.6220, -3.2646, 20.5025
Hunter-Lab	76.4664, 8.1020, 6.3243

Details

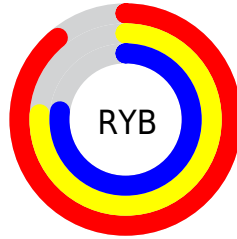
The CIELCh color **81, 12.941, 11.040** is a light color, and the websafe version is hex **FFCCCC**. A complement of this color would be **88, 12.003, 188.571**, and the grayscale version is **82, 0.010, 296.813**.

A 20% lighter version of the original color is **99, 2.709, 330.514**, and **61, 12.991, 10.839** is the 20% darker color. If you saturate the color by 10%, you get **75, 22.245, 12.220**, and if you desaturate by 10%, it is **87, 4.167, 10.004**.

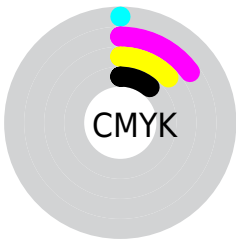
Distribution



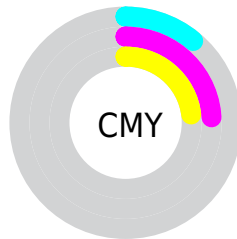
- Red (89%)
- Green (76%)
- Blue (77%)



- Red (89%)
- Yellow (76%)
- Blue (77%)



- Cyan (0%)
- Magenta (15%)
- Yellow (13%)
- Black (11%)



- Cyan (11%)
- Magenta (24%)
- Yellow (23%)

Brightness & Saturation Gradients

These gradients show how the CIELCh color 81, 12.941, 11.040 changes by changing the brightness by 10 percent. The first figure shows a shift by +10% for each color and the second figure -10%.

Similar to the brightness gradients but the following saturation gradients show a change of the CIELCh color 81, 12.941, 11.040 by changing the saturation by 10% instead.

81, 12.941, 11.040

81, 12.941, 11.040

100, 12.941,
11.040

71, 12.941, 11.040

61, 12.941, 11.040

51, 12.941, 11.040

41, 12.941, 11.040

31, 12.941, 11.040

21, 12.941, 11.040

11, 12.941, 11.040

1, 12.941, 11.040

0, 12.941, 11.040

81, 12.941, 11.040

81, 12.941, 11.040

75, 22.245, 12.220

87, 4.167, 10.004

69, 32.019, 13.655

93, 4.062, 189.495

64, 42.120, 15.453

98, 9.530, 198.873

59, 52.305, 17.734

55, 62.246, 20.638

52, 71.587, 24.278

49, 80.031, 28.641

48, 87.305, 33.387

47, 90.488, 35.542

Harmonies

Complementary

The Complementary color scheme is a pair of colors which are on the opposite of each other on the color wheel.



81, 12.941, 11.040



88, 12.003, 188.571

Rectangle

The Rectangle color scheme consists of four colors that form a rectangle on the color wheel.



81, 12.941, 11.040



81, 12.941, 61.040



81, 12.941, 191.040



81, 12.941, 241.040

Sweetspot

The Sweet Spot groups the original color and five complimentary colors.



81, 12.939, 11.048



97, 3.669, 9.889



81, 20.929, 321.460



51, 2.613, 9.981



0, 0.000, 0.000



53, 0.007, 296.813

Same Dimension

The Same Dimension uses a secret algorithm to generate beautiful new colors.



81, 12.939, 11.048



88, 17.258, 11.393



84, 10.466, 58.417



45, 4.865, 10.475



37, 74.963, 34.781



6, 26.784, 16.882

Inverse Universe

The Inverse Universe completely reimagines the original color for something new.



81, 12.939, 11.048



88, 17.258, 11.393



85, 9.753, 241.487



45, 4.865, 10.475



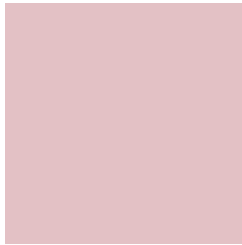
37, 74.963, 34.781



6, 26.784, 16.882

Previews

White Background



This preview shows how the CIELCh color 81, 12.941, 11.040 looks on a white background.

Color Contrast Check

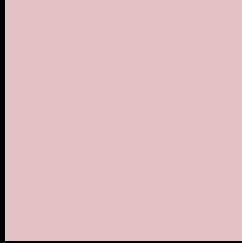
Large Text (above 18pt) WCAG AA × Fail

Any Text WCAG AA × Fail

Large Text (above 18pt) WCAG AAA × Fail

Any Text WCAG AAA × Fail

Black Background



This preview shows how the CIELCh color 81, 12.941, 11.040 looks on a black background.

Color Contrast Check

Large Text (above 18pt) WCAG AA ✓ Pass

Any Text WCAG AA ✓ Pass

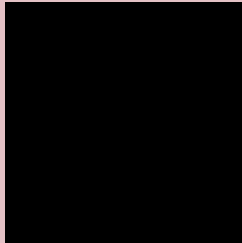
Large Text (above 18pt) WCAG AAA ✓ Pass

Any Text WCAG AAA ✓ Pass

If you want to check with other color combinations, try the [Color Contrast Checker](#).

CIELCh 81, 12.941, 11.040

Background



This preview shows how black text looks on a background with the CIELCh color 81, 12.941, 11.040.



This preview shows how white text looks on a background with the CIELCh color 81, 12.941, 11.040.

Color Blindness Simulation

Color vision deficiency is a very complex topic, and I could not describe the different causes any better than Wikipedia does, so if you want to learn more, you should check out their [article about color blindness](#).

Dichromacy



Original Color

81, 12.941, 11.040

Protanopia

81, 1.916, 3.198

Deuteranopia

81, 10.165, 14.206



Tritanopia
81, 15.815, 350.589

Trichromacy



Original Color
81, 12.941, 11.040

Protanomaly
81, 6.138, 4.809

Deuteranomaly
81, 11.358, 12.266

Tritanomaly
81, 14.588, 357.115

Monochromacy



Original Color
81, 12.941, 11.040

Achromatopsia
82, 0.010, 296.813

Achromatomaly
82, 4.462, 12.826

CSS Examples

Text

The CSS property to change the color of the text to CIELCh 81, 12.941, 11.040 is called "color". The color property can be set on classes, ids or directly on the HTML element.

This example shows how text in the color `rgb(227, 193, 197)` looks like.

```
.text, #text, p{  
    color:rgb(227, 193, 197)  
}
```

If you want to add a text shadow in that color use the text-shadow property, you can generate a text shadow directly with our [CSS Text Shadow Generator](#).

Here you see how black text with a 4 pixel rgb(227, 193, 197) colored shadow looks like.

```
.shadow{ text-shadow: 4px 4px 2px rgb(227, 193, 197) }
```

Border

The CSS property to change the border of an element to CIELCh 81, 12.941, 11.040 is called "border". The border property can be set on classes, ids or directly on the HTML element.

This example shows the color as border, it can be applied via the CSS property "border" or "border-color".

```
.border, #border, table{ border:4px solid rgb(227, 193, 197) }
```

If only the border color should be changed use the property border-color.

```
.border{ border-color:rgb(227, 193, 197) }
```

If you want to add a box shadow in that color use:

Here you see how a box with a 4 pixel rgb(227, 193, 197) colored shadow looks like.

```
.boxshadow{ -moz-box-shadow:4px 4px 4px  
4px rgb(227, 193, 197); -webkit-box-  
shadow:4px 4px 4px 4px rgb(227, 193, 197);  
box-shadow:4px 4px 4px 4px rgb(227, 193,  
197) }
```

Background

The CSS property to change the background color of an element to CIELCh 81, 12.941, 11.040 is called "background". The background property can be set on classes, ids or directly on the HTML element.

```
.background, #background, body{  
background: rgb(227, 193, 197) }
```

If only the background color should be changed can be used:

```
.background{ background-color: rgb(227,  
193, 197) }
```

This example shows the color as background, it is applied via the CSS property "background".

To optimize and compress your CSS code, you can use our [online CSS compressor and optimizer](#) based on csstidy. If you want to create a linear or radial gradient as background or border, check our [CSS Gradient Generator](#).

Hey! You found this booklet interesting? Support Converting Colors with the new Membership Option!

The pro membership hides all ads, plus gives you double the colors in the color bucket, and more awesome pro features!

[Learn more, Memberships starting at \\$2.50/m!](#)

**Follow me
on Twitter!**

@ConvertingColor