

Converting Colors

CIELCh(81, 14.913, 47.573)

Have a look what the booklet for
CIELCh(81, 14.913, 47.573) contains.

CIELCh(81, 14.913, 47.573)	3
<i>Conversions</i>	4
<i>Details</i>	6
<i>Harmonies</i>	11
<i>Previews</i>	20
<i>Color Blindness Simulation</i>	23
<i>CSS Examples</i>	26

Color

CIELCh(81, 14.913, 47.573)

Conversions

Conversions Part 1

Format	Color
Hex	E4C2B5
RGB	228, 194, 181
RGB Percent	89%, 76%, 71%
CMY	0.1055, 0.2389, 0.2899
CMYK	0.00, 0.15, 0.21, 0.11
HSL	17°, 47%, 80%
HSV	17°, 21%, 89%
XYZ	59.6843, 58.4711, 51.9030
YIQ	202.6840, 24.4370, 3.1650

Conversions

Conversions Part 2

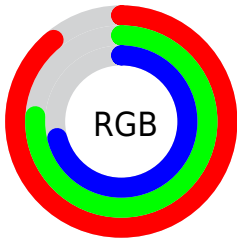
Format	Color
RYB	228, 199, 181
Decimal	14992053
CIELab	81.00, 10.06, 11.01
CIElCh	81, 14.913, 47.573
Yxy	58.4711, 0.3510, 0.3438
Android (android.graphics.Color)	4293182133 (0xFFE4C2B5)
YUV	202.6840, -10.6902, 22.2021
Hunter-Lab	76.4664, 5.5085, 13.2822

Details

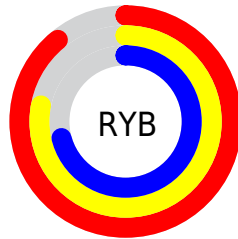
The CIELCh color **81, 14.913, 47.573** is a light color, and the websafe version is hex **FFCCCC**. A complement of this color would be **84, 13.164, 230.289**, and the grayscale version is **82, 0.010, 296.813**.

A 20% lighter version of the original color is **99, 7.237, 98.190**, and **61, 15.001, 46.967** is the 20% darker color. If you saturate the color by 10%, you get **76, 23.053, 47.210**, and if you desaturate by 10%, it is **86, 7.380, 48.023**.

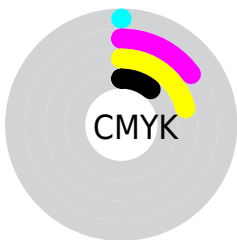
Distribution



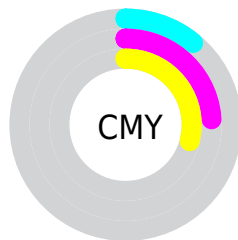
- Red (89%)
- Green (76%)
- Blue (71%)



- Red (89%)
- Yellow (78%)
- Blue (71%)



- Cyan (0%)
- Magenta (15%)
- Yellow (21%)
- Black (11%)



- Cyan (11%)
- Magenta (24%)
- Yellow (29%)

Brightness & Saturation Gradients

These gradients show how the CIELCh color 81, 14.913, 47.573 changes by changing the brightness by 10 percent. The first figure shows a shift by +10% for each color and the second figure -10%.

Similar to the brightness gradients but the following saturation gradients show a change of the CIELCh color 81, 14.913, 47.573 by changing the saturation by 10% instead.

81, 14.913, 47.573

81, 14.913, 47.573

100, 14.913,
47.573

71, 14.913, 47.573

61, 14.913, 47.573

51, 14.913, 47.573

41, 14.913, 47.573

31, 14.913, 47.573

21, 14.913, 47.573

11, 14.913, 47.573

1, 14.913, 47.573

0, 14.913, 47.573

81, 14.913, 47.573

81, 14.913, 47.573

76, 23.053, 47.210

86, 7.380, 48.023

72, 31.841, 46.946

90, 0.403, 47.231

68, 41.283, 46.819

95, 6.075, 229.331

64, 51.321, 46.836

98, 9.154, 198.899

60, 61.776, 46.967

57, 72.200, 47.077

54, 81.598, 46.808

52, 88.417, 45.934

Harmonies

Complementary

The Complementary color scheme is a pair of colors which are on the opposite of each other on the color wheel.



81, 14.913, 47.573



84, 13.164, 230.289

Rectangle

The Rectangle color scheme consists of four colors that form a rectangle on the color wheel.



81, 14.913, 47.573



81, 14.913, 97.573



81, 14.913, 227.573



81, 14.913, 277.573

Sweetspot

The Sweet Spot groups the original color and five complimentary colors.



81, 14.912, 47.584



97, 4.488, 48.204



79, 25.040, 334.365



51, 2.985, 48.182



0, 0.000, 0.000



53, 0.007, 296.813

Same Dimension

The Same Dimension uses a secret algorithm to generate beautiful new colors.



81, 14.912, 47.584



87, 20.166, 47.402



87, 19.227, 95.867



46, 3.953, 48.072



41, 73.169, 46.435



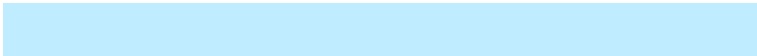
9, 22.578, 38.745

Inverse Universe

The Inverse Universe completely reimagines the original color for something new.



84, 13.164, 230.289



91, 17.258, 230.757



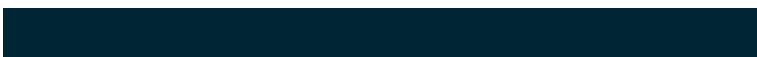
78, 19.557, 281.110



46, 3.748, 229.383



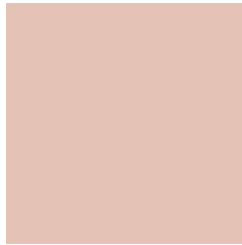
51, 36.160, 251.507



13, 14.446, 242.782

Previews

White Background



This preview shows how the CIELCh color 81, 14.913, 47.573 looks on a white background.

Color Contrast Check

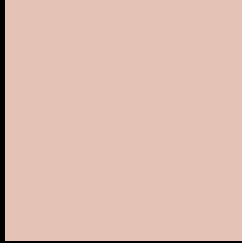
Large Text (above 18pt) WCAG AA × Fail

Any Text WCAG AA × Fail

Large Text (above 18pt) WCAG AAA × Fail

Any Text WCAG AAA × Fail

Black Background



This preview shows how the CIELCh color 81, 14.913, 47.573 looks on a black background.

Color Contrast Check

Large Text (above 18pt) WCAG AA ✓ Pass

Any Text WCAG AA ✓ Pass

Large Text (above 18pt) WCAG AAA ✓ Pass

Any Text WCAG AAA ✓ Pass

If you want to check with other color combinations, try the [Color Contrast Checker](#).

CIELCh 81, 14.913, 47.573

Background



This preview shows how black text looks on a background with the CIELCh color 81, 14.913, 47.573.



This preview shows how white text looks on a background with the CIELCh color 81, 14.913, 47.573.

Color Blindness Simulation

Color vision deficiency is a very complex topic, and I could not describe the different causes any better than Wikipedia does, so if you want to learn more, you should check out their [article about color blindness](#).

Dichromacy



Original Color

81, 14.913, 47.573

Protanopia

81, 8.976, 89.671

Deuteranopia

81, 14.913, 47.573



Tritanopia
81, 17.139, 353.278

Trichromacy



Original Color
81, 14.913, 47.573

Protanomaly
81, 10.112, 66.670

Deuteranomaly
81, 14.913, 47.573

Tritanomaly
81, 14.925, 10.431

Monochromacy



Original Color
81, 14.913, 47.573

Achromatopsia
82, 0.010, 296.813

Achromatomaly
81, 5.184, 50.225

CSS Examples

Text

The CSS property to change the color of the text to CIELCh 81, 14.913, 47.573 is called "color". The color property can be set on classes, ids or directly on the HTML element.

This example shows how text in the color `rgb(228, 194, 181)` looks like.

```
.text, #text, p{  
    color:rgb(228, 194, 181)  
}
```

If you want to add a text shadow in that color use the text-shadow property, you can generate a text shadow directly with our [CSS Text Shadow Generator](#).

Here you see how black text with a 4 pixel rgb(228, 194, 181) colored shadow looks like.

```
.shadow{ text-shadow: 4px 4px 2px rgb(228, 194, 181) }
```

Border

The CSS property to change the border of an element to CIELCh 81, 14.913, 47.573 is called "border". The border property can be set on classes, ids or directly on the HTML element.

This example shows the color as border, it can be applied via the CSS property "border" or "border-color".

```
.border, #border, table{ border:4px solid rgb(228, 194, 181) }
```

If only the border color should be changed use the property `border-color`.

```
.border{ border-color:rgb(228, 194, 181) }
```

If you want to add a box shadow in that color use:

Here you see how a box with a 4 pixel `rgb(228, 194, 181)` colored shadow looks like.

```
.boxshadow{ -moz-box-shadow:4px 4px 4px 4px rgb(228, 194, 181); -webkit-box-shadow:4px 4px 4px 4px rgb(228, 194, 181); box-shadow:4px 4px 4px 4px rgb(228, 194, 181) }
```

Background

The CSS property to change the background color of an element to CIELCh 81, 14.913, 47.573 is called "background". The background property can be set on classes, ids or directly on the HTML element.

```
.background, #background, body{  
background: rgb(228, 194, 181) }
```

If only the background color should be changed can be used:

```
.background{ background-color: rgb(228,  
194, 181) }
```

This example shows the color as background, it is applied via the CSS property "background".

To optimize and compress your CSS code, you can use our [online CSS compressor and optimizer](#) based on csstidy. If you want to create a linear or radial gradient as background or border, check our [CSS Gradient Generator](#).

Hey! You found this booklet interesting? Support Converting Colors with the new Membership Option!

The pro membership hides all ads, plus gives you double the colors in the color bucket, and more awesome pro features!

[Learn more, Memberships starting at \\$2.50/m!](#)

**Follow me
on Twitter!**

@ConvertingColor