

Converting Colors

CIELCh(81, 15.236, 48.832)

Have a look what the booklet for
CIELCh(81, 15.236, 48.832) contains.

CIELCh(81, 15.192, 49.265)	3
<i>Conversions</i>	4
<i>Details</i>	6
<i>Harmonies</i>	11
<i>Previews</i>	20
<i>Color Blindness Simulation</i>	23
<i>CSS Examples</i>	26

Color

CIELCh(81, 15.192, 49.265)

Conversions

Conversions Part 1

Format	Color
Hex	E4C2B4
RGB	228, 194, 180
RGB Percent	89%, 76%, 71%
CMY	0.1053, 0.2386, 0.2935
CMYK	0.00, 0.15, 0.21, 0.11
HSL	18°, 47%, 80%
HSV	18°, 21%, 89%
XYZ	59.6227, 58.4711, 51.4027
YIQ	202.5700, 24.7580, 2.8540

Conversions

Conversions Part 2

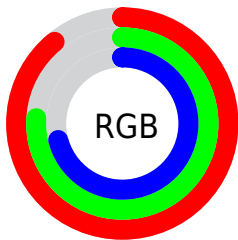
Format	Color
R _Y B	228, 200, 180
Decimal	14992052
CIE Lab	81.00, 9.91, 11.51
CIE LCh	81, 15.192, 49.265
Yxy	58.4711, 0.3518, 0.3450
Android (android.graphics.Color)	4293182132 (0xFFE4C2B4)
YUV	202.5700, -11.1270, 22.3021
Hunter-Lab	76.4664, 5.3647, 13.6702

Details

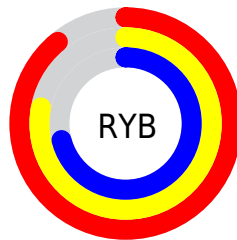
The CIELCh color $81, 15.192, 49.265$ is a light color, and the websafe version is hex `FFCCCC`. A complement of this color would be $84, 13.418, 232.343$, and the grayscale version is $82, 0.010, 296.813$.

A 20% lighter version of the original color is $99, 7.736, 98.883$, and $61, 15.299, 48.736$ is the 20% darker color. If you saturate the color by 10%, you get $77, 23.312, 48.822$, and if you desaturate by 10%, it is $86, 7.669, 49.789$.

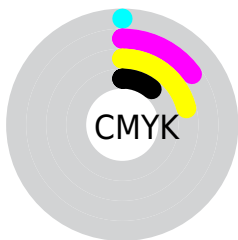
Distribution



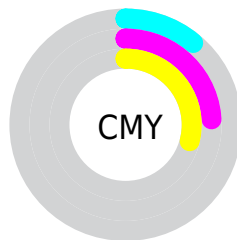
- Red (89%)
- Green (76%)
- Blue (71%)



- Red (89%)
- Yellow (78%)
- Blue (71%)



- Cyan (0%)
- Magenta (15%)
- Yellow (21%)
- Black (11%)



- Cyan (11%)
- Magenta (24%)
- Yellow (29%)


Brightness & Saturation Gradients

These gradients show how the CIELCh color 81, 15.192, 49.265 changes by changing the brightness by 10 percent. The first figure shows a shift by +10% for each color and the second figure -10%.

Similar to the brightness gradients but the following saturation gradients show a change of the CIELCh color 81, 15.192, 49.265 by changing the saturation by 10% instead.

 81, 15.192, 49.265

 81, 15.192, 49.265

 100, 15.192,
49.265

 71, 15.192, 49.265

 61, 15.192, 49.265

 51, 15.192, 49.265

 41, 15.192, 49.265

 31, 15.192, 49.265

 21, 15.192, 49.265

 11, 15.192, 49.265

 1, 15.192, 49.265

 0, 15.192, 49.265

81, 15.192, 49.265

81, 15.192, 49.265

77, 23.312, 48.822

86, 7.669, 49.789

72, 32.068, 48.470

90, 0.693, 49.661

68, 41.466, 48.242

95, 5.793, 231.223

64, 51.445, 48.143

98, 9.132, 198.901

61, 61.819, 48.135

57, 72.125, 48.075

55, 81.343, 47.600

52, 87.746, 46.597

Harmonies

Complementary

The Complementary color scheme is a pair of colors which are on the opposite of each other on the color wheel.



81, 15.192, 49.265



84, 13.418, 232.343

Rectangle

The Rectangle color scheme consists of four colors that form a rectangle on the color wheel.



81, 15.192, 49.265



81, 15.192, 99.265



81, 15.192, 229.265



81, 15.192, 279.265

Sweetspot

The Sweet Spot groups the original color and five complimentary colors.



81, 15.191, 49.275



97, 4.474, 50.025



79, 25.280, 335.071



51, 2.975, 49.998



0, 0.000, 0.000



53, 0.007, 296.813

Same Dimension

The Same Dimension uses a secret algorithm to generate beautiful new colors.



81, 15.191, 49.275



88, 20.075, 49.079



87, 19.967, 96.905



46, 3.940, 49.869



41, 72.596, 47.119



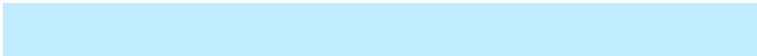
9, 22.384, 39.966

Inverse Universe

The Inverse Universe completely reimagines the original color for something new.



84, 13.418, 232.343



91, 17.253, 232.803



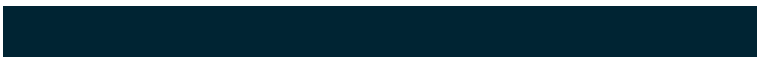
78, 20.380, 282.200



46, 3.741, 231.305



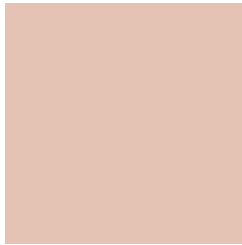
50, 36.953, 254.424



13, 14.630, 245.455

Previews

White Background



This preview shows how the CIELCh color 81, 15.192, 49.265 looks on a white background.

Color Contrast Check

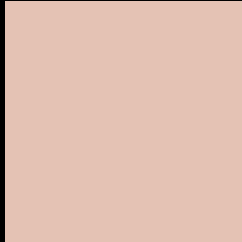
Large Text (above 18pt) WCAG AA × Fail

Any Text WCAG AA × Fail

Large Text (above 18pt) WCAG AAA × Fail

Any Text WCAG AAA × Fail

Black Background



This preview shows how the CIELCh color 81, 15.192, 49.265 looks on a black background.

Color Contrast Check

Large Text (above 18pt) WCAG AA ✓ Pass

Any Text WCAG AA ✓ Pass

Large Text (above 18pt) WCAG AAA ✓ Pass

Any Text WCAG AAA ✓ Pass

If you want to check with other color combinations, try the [Color Contrast Checker](#).

CIELCh 81, 15.192, 49.265

Background



This preview shows how black text looks on a background with the CIELCh color 81, 15.192, 49.265.



This preview shows how white text looks on a background with the CIELCh color 81, 15.192, 49.265.

Color Blindness Simulation

Color vision deficiency is a very complex topic, and I could not describe the different causes any better than Wikipedia does, so if you want to learn more, you should check out their [article about color blindness](#).

Dichromacy



Original Color

81, 15.192, 49.265

Protanopia

81, 9.478, 90.674

Deuteranopia

81, 15.192, 49.265



Tritanopia
81, 17.139, 353.278

Trichromacy



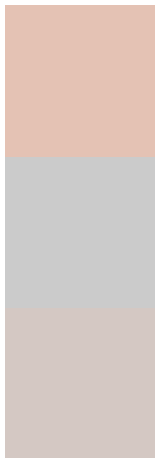
Original Color
81, 15.192, 49.265

Protanomaly
81, 10.678, 71.884

Deuteranomaly
81, 15.192, 49.265

Tritanomaly
81, 14.473, 12.182

Monochromacy



Original Color
81, 15.192, 49.265

Achromatopsia
82, 0.010, 296.813

Achromatomaly
81, 5.184, 50.225

CSS Examples

Text

The CSS property to change the color of the text to CIELCh 81, 15.192, 49.265 is called "color". The color property can be set on classes, ids or directly on the HTML element.

This example shows how text in the color `rgb(228, 194, 180)` looks like.

```
.text, #text, p{  
    color:rgb(228, 194, 180)  
}
```

If you want to add a text shadow in that color use the text-shadow property, you can generate a text shadow directly with our [CSS Text Shadow Generator](#).

Here you see how black text with a 4 pixel rgb(228, 194, 180) colored shadow looks like.

```
.shadow{ text-shadow: 4px 4px 2px rgb(228, 194, 180) }
```

Border

The CSS property to change the border of an element to CIELCh 81, 15.192, 49.265 is called "border". The border property can be set on classes, ids or directly on the HTML element.

This example shows the color as border, it can be applied via the CSS property "border" or "border-color".

```
.border, #border, table{ border:4px solid rgb(228, 194, 180) }
```

If only the border color should be changed use the property `border-color`.

```
.border{ border-color:rgb(228, 194, 180) }
```

If you want to add a box shadow in that color use:

Here you see how a box with a 4 pixel `rgb(228, 194, 180)` colored shadow looks like.

```
.boxshadow{ -moz-box-shadow:4px 4px 4px 4px rgb(228, 194, 180); -webkit-box-shadow:4px 4px 4px 4px rgb(228, 194, 180); box-shadow:4px 4px 4px 4px rgb(228, 194, 180) }
```

Background

The CSS property to change the background color of an element to CIELCh 81, 15.192, 49.265 is called "background". The background property can be set on classes, ids or directly on the HTML element.

```
.background, #background, body{  
background: rgb(228, 194, 180) }
```

If only the background color should be changed can be used:

```
.background{ background-color: rgb(228,  
194, 180) }
```

This example shows the color as background, it is applied via the CSS property "background".

To optimize and compress your CSS code, you can use our [online CSS compressor and optimizer](#) based on csstidy. If you want to create a linear or radial gradient as background or border, check our [CSS Gradient Generator](#).

Hey! You found this booklet interesting? Support Converting Colors with the new Membership Option!

The pro membership hides all ads, plus gives you double the colors in the color bucket, and more awesome pro features!

[Learn more, Memberships starting at \\$2.50/m!](#)

**Follow me
on Twitter!**

@ConvertingColor