

# Converting Colors

CIELCh(81, 16.606, 61.553)

Have a look what the booklet for  
CIELCh(81, 16.606, 61.553) contains.

<b>CIELCh(81, 16.844, 61.080)</b> .....	3
<i><b>Conversions</b></i> .....	4
<i><b>Details</b></i> .....	6
<i><b>Harmonies</b></i> .....	11
<i><b>Previews</b></i> .....	20
<i><b>Color Blindness Simulation</b></i> .....	23
<i><b>CSS Examples</b></i> .....	26

# Color

**CIELCh(81, 16.844, 61.080)**

# Conversions

## Conversions Part 1

Format	Color
Hex	E3C3AE
RGB	227, 195, 174
RGB Percent	89%, 76%, 68%
CMY	0.1095, 0.2349, 0.3173
CMYK	0.00, 0.14, 0.23, 0.11
HSL	24°, 49%, 79%
HSV	24°, 23%, 89%
XYZ	58.8869, 58.4711, 48.2683
YIQ	202.1740, 25.8130, 0.2530

# Conversions

## Conversions Part 2

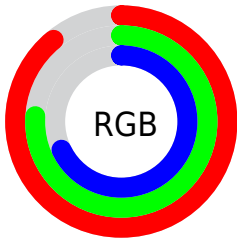
Format	Color
R <sub>Y</sub> B	227, 209, 174
Decimal	14926766
CIE Lab	81.00, 8.15, 14.74
CIE LCh	81, 16.844, 61.080
Yxy	58.4711, 0.3555, 0.3530
Android (android.graphics.Color)	4293116846 (0xFFE3C3AE)
YUV	202.1740, -13.8898, 21.7724
Hunter-Lab	76.4664, 3.6469, 16.1006

# Details

The CIELCh color **81, 16.844, 61.080** is a light color, and the websafe version is hex **FFCCCC**. A complement of this color would be **81, 15.176, 246.462**, and the grayscale version is **81, 0.010, 296.813**.

A 20% lighter version of the original color is **99, 11.203, 103.755**, and **61, 16.663, 59.675** is the 20% darker color. If you saturate the color by 10%, you get **77, 24.865, 60.142**, and if you desaturate by 10%, it is **85, 9.322, 62.055**.

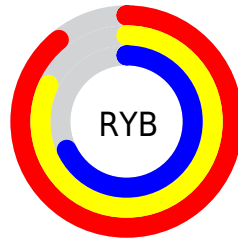
# Distribution



Red (89%)

Green (76%)

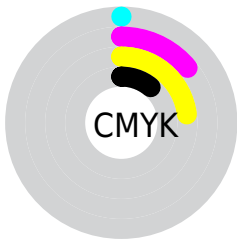
Blue (68%)



Red (89%)

Yellow (82%)

Blue (68%)

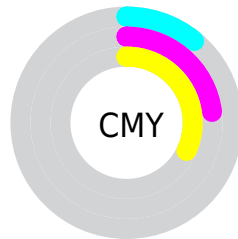


Cyan (0%)

Magenta (14%)

Yellow (23%)

Black (11%)



Cyan (11%)

Magenta (23%)

Yellow (32%)

# Brightness & Saturation Gradients


These gradients show how the CIELCh color 81, 16.844, 61.080 changes by changing the brightness by 10 percent. The first figure shows a shift by +10% for each color and the second figure -10%.

Similar to the brightness gradients but the following saturation gradients show a change of the CIELCh color 81, 16.844, 61.080 by changing the saturation by 10% instead.



 81, 16.844, 61.080

 81, 16.844, 61.080

 100, 16.844,  
61.080

 71, 16.844, 61.080

 61, 16.844, 61.080

 51, 16.844, 61.080

 41, 16.844, 61.080

 31, 16.844, 61.080

 21, 16.844, 61.080

 11, 16.844, 61.080

 1, 16.844, 61.080

 0, 16.844, 61.080

81, 16.844, 61.080

81, 16.844, 61.080

77, 24.865, 60.142

85, 9.322, 62.055

73, 33.408, 59.233

89, 2.259, 62.896

70, 42.457, 58.366

93, 4.391, 244.236

66, 51.919, 57.526

97, 8.127, 217.704

63, 61.543, 56.641

98, 9.486, 198.876

60, 70.757, 55.535

57, 78.471, 53.836

56, 82.517, 52.373

# Harmonies

# Complementary

The Complementary color scheme is a pair of colors which are on the opposite of each other on the color wheel.



81, 16.844, 61.080



81, 15.176, 246.462

# Rectangle

The Rectangle color scheme consists of four colors that form a rectangle on the color wheel.



81, 16.844, 61.080



81, 16.844, 111.080



81, 16.844, 241.080



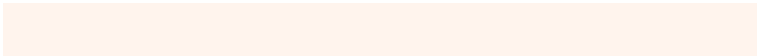
81, 16.844, 291.080

# Sweetspot

The Sweet Spot groups the original color and five complimentary colors.



81, 16.844, 61.090



97, 5.266, 62.638



77, 26.094, 339.688



51, 3.428, 62.585



0, 0.000, 0.000



53, 0.007, 296.813

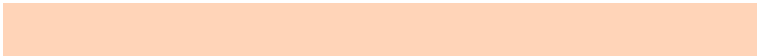


# Same Dimension

The Same Dimension uses a secret algorithm to generate beautiful new colors.



81, 16.844, 61.090



88, 22.553, 60.627



88, 24.374, 102.465



46, 3.953, 62.421



44, 68.565, 52.992



11, 21.309, 49.591



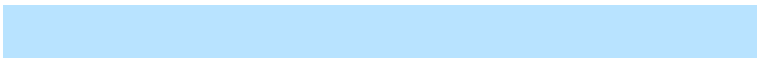


# Inverse Universe

The Inverse Universe completely reimagines the original color for something new.



81, 15.176, 246.462



88, 19.827, 247.268



74, 25.375, 287.935



46, 3.806, 244.572



44, 44.662, 271.697

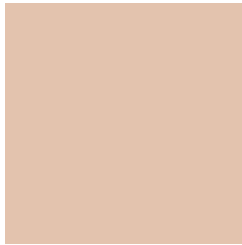


11, 16.670, 262.257



# Previews

## White Background



This preview shows how the CIELCh color 81, 16.844, 61.080 looks on a white background.

## Color Contrast Check

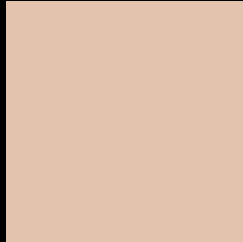
Large Text (above 18pt) WCAG AA × Fail

Any Text WCAG AA × Fail

Large Text (above 18pt) WCAG AAA × Fail

Any Text WCAG AAA × Fail

# Black Background



This preview shows how the CIELCh color 81, 16.844, 61.080 looks on a black background.

## Color Contrast Check

Large Text (above 18pt) WCAG AA ✓ Pass

Any Text WCAG AA ✓ Pass

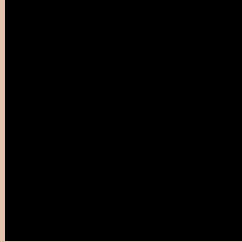
Large Text (above 18pt) WCAG AAA ✓ Pass

Any Text WCAG AAA ✓ Pass

If you want to check with other color combinations, try the [Color Contrast Checker](#).

**CIELCh 81, 16.844, 61.080**

## **Background**



This preview shows how black text looks on a background with the CIELCh color 81, 16.844, 61.080.



This preview shows how white text looks on a background with the CIELCh color 81, 16.844, 61.080.

# Color Blindness Simulation

Color vision deficiency is a very complex topic, and I could not describe the different causes any better than Wikipedia does, so if you want to learn more, you should check out their [article about color blindness](#).

## Dichromacy



### Original Color

81, 16.844, 61.080

### Protanopia

81, 13.251, 92.141

### Deuteranopia

81, 17.763, 56.534



**Tritanopia**  
81, 16.572, 354.273



# Trichromacy



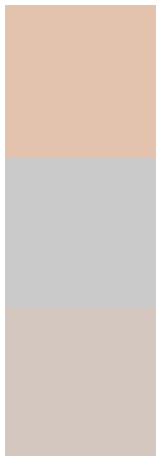
**Original Color**  
81, 16.844, 61.080

**Protanomaly**  
81, 14.042, 79.281

**Deuteranomaly**  
81, 17.441, 57.302

**Tritanomaly**  
81, 14.414, 16.346

# Monochromacy



**Original Color**  
81, 16.844, 61.080

**Achromatopsia**  
81, 0.010, 296.813

**Achromatomaly**  
81, 5.812, 59.134

# CSS Examples

## Text

The CSS property to change the color of the text to CIELCh 81, 16.844, 61.080 is called "color". The color property can be set on classes, ids or directly on the HTML element.

This example shows how text in the color `rgb(227, 195, 174)` looks like.

```
.text, #text, p{  
    color:rgb(227, 195, 174)  
}
```

If you want to add a text shadow in that color use the text-shadow property, you can generate a text shadow directly with our [CSS Text Shadow Generator](#).

Here you see how black text with a 4 pixel rgb(227, 195, 174) colored shadow looks like.

```
.shadow{ text-shadow: 4px 4px 2px rgb(227, 195, 174) }
```

## Border

The CSS property to change the border of an element to CIELCh 81, 16.844, 61.080 is called "border". The border property can be set on classes, ids or directly on the HTML element.

This example shows the color as border, it can be applied via the CSS property "border" or "border-color".

```
.border, #border, table{ border:4px solid rgb(227, 195, 174) }
```

If only the border color should be changed use the property `border-color`.

```
.border{ border-color:rgb(227, 195, 174) }
```

If you want to add a box shadow in that color use:

Here you see how a box with a 4 pixel `rgb(227, 195, 174)` colored shadow looks like.

```
.boxshadow{ -moz-box-shadow:4px 4px 4px  
4px rgb(227, 195, 174); -webkit-box-  
shadow:4px 4px 4px 4px rgb(227, 195, 174);  
box-shadow:4px 4px 4px 4px rgb(227, 195,  
174) }
```

# Background

The CSS property to change the background color of an element to CIELCh 81, 16.844, 61.080 is called "background". The background property can be set on classes, ids or directly on the HTML element.

```
.background, #background, body{  
background: rgb(227, 195, 174) }
```

If only the background color should be changed can be used:

```
.background{ background-color: rgb(227,  
195, 174) }
```

This example shows the color as background, it is applied via the CSS property "background".

To optimize and compress your CSS code, you can use our [online CSS compressor and optimizer](#) based on csstidy. If you want to create a linear or radial gradient as background or border, check our [CSS Gradient Generator](#).

Hey! You found this booklet interesting? Support Converting Colors with the new Membership Option!

The pro membership hides all ads, plus gives you double the colors in the color bucket, and more awesome pro features!

**[Learn more, Memberships starting at \\$2.50/m!](#)**

**Follow me  
on Twitter!**

@ConvertingColor