

Converting Colors

CIELCh(81, 17.548, 54.168)

Have a look what the booklet for
CIELCh(81, 17.548, 54.168) contains.

CIELCh(81, 17.425, 55.233)	3
<i>Conversions</i>	4
<i>Details</i>	6
<i>Harmonies</i>	11
<i>Previews</i>	20
<i>Color Blindness Simulation</i>	23
<i>CSS Examples</i>	26

Color

CIELCh(81, 17.425, 55.233)

Conversions

Conversions Part 1

Format	Color
Hex	E6C2AF
RGB	230, 194, 175
RGB Percent	90%, 76%, 69%
CMY	0.0982, 0.2394, 0.3139
CMYK	0.00, 0.16, 0.24, 0.10
HSL	21°, 52%, 79%
HSV	21°, 24%, 90%
XYZ	59.6322, 58.4711, 48.6770
YIQ	202.5980, 27.5550, 1.7230

Conversions

Conversions Part 2

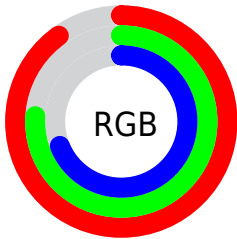
Format	Color
R _Y B	230, 204, 175
Decimal	15123119
CIE Lab	81.00, 9.94, 14.31
CIE LCh	81, 17.425, 55.233
Yxy	58.4711, 0.3575, 0.3506
Android (android.graphics.Color)	4293313199 (0xFFE6C2AF)
YUV	202.5980, -13.6058, 24.0316
Hunter-Lab	76.4664, 5.3869, 15.7836

Details

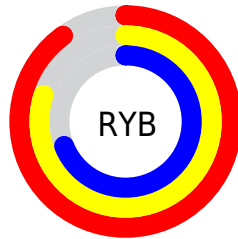
The CIELCh color **81, 17.425, 55.233** is a light color, and the websafe version is hex **FFCCCC**. A complement of this color would be **83, 15.357, 239.901**, and the grayscale version is **82, 0.010, 296.813**.

A 20% lighter version of the original color is **98, 10.243, 101.272**, and **61, 17.350, 53.523** is the 20% darker color. If you saturate the color by 10%, you get **77, 25.631, 54.527**, and if you desaturate by 10%, it is **85, 9.781, 56.003**.

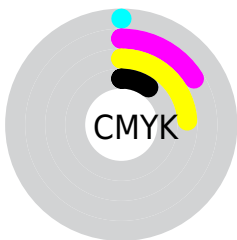
Distribution



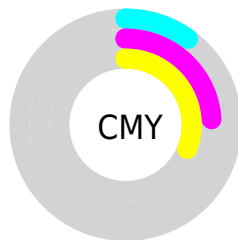
- Red (90%)
- Green (76%)
- Blue (69%)



- Red (90%)
- Yellow (80%)
- Blue (69%)



- Cyan (0%)
- Magenta (16%)
- Yellow (24%)
- Black (10%)



- Cyan (10%)
- Magenta (24%)
- Yellow (31%)


Brightness & Saturation Gradients

These gradients show how the CIELCh color 81, 17.425, 55.233 changes by changing the brightness by 10 percent. The first figure shows a shift by +10% for each color and the second figure -10%.

Similar to the brightness gradients but the following saturation gradients show a change of the CIELCh color 81, 17.425, 55.233 by changing the saturation by 10% instead.

 81, 17.425, 55.233

 81, 17.425, 55.233

 100, 17.425,
55.233

 71, 17.425, 55.233

 61, 17.425, 55.233

 51, 17.425, 55.233

 41, 17.425, 55.233

 31, 17.425, 55.233

 21, 17.425, 55.233

 11, 17.425, 55.233

 1, 17.425, 55.233

 0, 17.425, 55.233

81, 17.425, 55.233

81, 17.425, 55.233

77, 25.631, 54.527

85, 9.781, 56.003

73, 34.430, 53.884

90, 2.655, 56.683

69, 43.809, 53.322

94, 4.005, 237.868

65, 53.679, 52.828

98, 8.252, 201.963

62, 63.786, 52.335

98, 8.537, 198.943

59, 73.534, 51.651

56, 81.735, 50.357

55, 85.725, 49.291

Harmonies

Complementary

The Complementary color scheme is a pair of colors which are on the opposite of each other on the color wheel.



81, 17.425, 55.233



83, 15.357, 239.901

Rectangle

The Rectangle color scheme consists of four colors that form a rectangle on the color wheel.



81, 17.425, 55.233



81, 17.425, 105.233



81, 17.425, 235.233



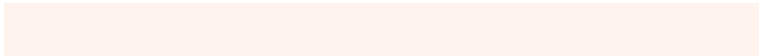
81, 17.425, 285.233

Sweetspot

The Sweet Spot groups the original color and five complimentary colors.



81, 17.425, 55.243



97, 5.221, 56.512



77, 27.954, 337.433



51, 3.400, 56.470



0, 0.000, 0.000



53, 0.007, 296.813

Same Dimension

The Same Dimension uses a secret algorithm to generate beautiful new colors.



81, 17.425, 55.243



87, 23.421, 54.860



88, 24.015, 99.629



46, 3.923, 56.341



43, 70.506, 49.893



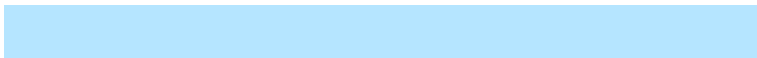
10, 21.763, 44.679

Inverse Universe

The Inverse Universe completely reimagines the original color for something new.



83, 15.357, 239.901



89, 19.999, 240.687



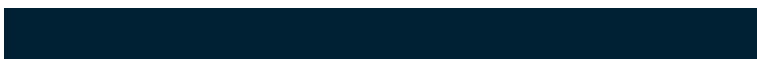
76, 24.825, 285.491



46, 3.749, 238.185



47, 40.476, 263.975



12, 15.520, 254.529

Previews

White Background



This preview shows how the CIELCh color 81, 17.425, 55.233 looks on a white background.

Color Contrast Check

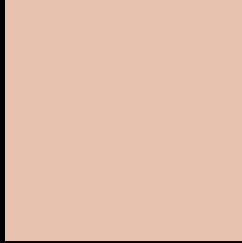
Large Text (above 18pt) WCAG AA × Fail

Any Text WCAG AA × Fail

Large Text (above 18pt) WCAG AAA × Fail

Any Text WCAG AAA × Fail

Black Background



This preview shows how the CIELCh color 81, 17.425, 55.233 looks on a black background.

Color Contrast Check

Large Text (above 18pt) WCAG AA ✓ Pass

Any Text WCAG AA ✓ Pass

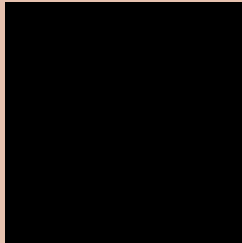
Large Text (above 18pt) WCAG AAA ✓ Pass

Any Text WCAG AAA ✓ Pass

If you want to check with other color combinations, try the [Color Contrast Checker](#).

CIELCh 81, 17.425, 55.233

Background



This preview shows how black text looks on a background with the CIELCh color 81, 17.425, 55.233.



This preview shows how white text looks on a background with the CIELCh color 81, 17.425, 55.233.

Color Blindness Simulation

Color vision deficiency is a very complex topic, and I could not describe the different causes any better than Wikipedia does, so if you want to learn more, you should check out their [article about color blindness](#).

Dichromacy





Tritanopia
81, 17.604, 356.047

Trichromacy



Original Color
81, 17.425, 55.233

Protanomaly
81, 13.347, 75.737

Deuteranomaly
81, 17.425, 55.233

Tritanomaly
81, 15.590, 16.768

Monochromacy



Original Color
81, 17.425, 55.233

Achromatopsia
82, 0.010, 296.813

Achromatomaly
81, 6.103, 56.886

CSS Examples

Text

The CSS property to change the color of the text to CIELCh 81, 17.425, 55.233 is called "color". The color property can be set on classes, ids or directly on the HTML element.

This example shows how text in the color `rgb(230, 194, 175)` looks like.

```
.text, #text, p{  
    color:rgb(230, 194, 175)  
}
```

If you want to add a text shadow in that color use the text-shadow property, you can generate a text shadow directly with our [CSS Text Shadow Generator](#).

Here you see how black text with a 4 pixel rgb(230, 194, 175) colored shadow looks like.

```
.shadow{ text-shadow: 4px 4px 2px rgb(230, 194, 175) }
```

Border

The CSS property to change the border of an element to CIELCh 81, 17.425, 55.233 is called "border". The border property can be set on classes, ids or directly on the HTML element.

This example shows the color as border, it can be applied via the CSS property "border" or "border-color".

```
.border, #border, table{ border:4px solid rgb(230, 194, 175) }
```

If only the border color should be changed use the property `border-color`.

```
.border{ border-color:rgb(230, 194, 175) }
```

If you want to add a box shadow in that color use:

Here you see how a box with a 4 pixel `rgb(230, 194, 175)` colored shadow looks like.

```
.boxshadow{ -moz-box-shadow:4px 4px 4px  
4px rgb(230, 194, 175); -webkit-box-  
shadow:4px 4px 4px 4px rgb(230, 194, 175);  
box-shadow:4px 4px 4px 4px rgb(230, 194,  
175) }
```

Background

The CSS property to change the background color of an element to CIELCh 81, 17.425, 55.233 is called "background". The background property can be set on classes, ids or directly on the HTML element.

```
.background, #background, body{  
background: rgb(230, 194, 175) }
```

If only the background color should be changed can be used:

```
.background{ background-color: rgb(230,  
194, 175) }
```

This example shows the color as background, it is applied via the CSS property "background".

To optimize and compress your CSS code, you can use our [online CSS compressor and optimizer](#) based on csstidy. If you want to create a linear or radial gradient as background or border, check our [CSS Gradient Generator](#).

Hey! You found this booklet interesting? Support Converting Colors with the new Membership Option!

The pro membership hides all ads, plus gives you double the colors in the color bucket, and more awesome pro features!

[Learn more, Memberships starting at \\$2.50/m!](#)

**Follow me
on Twitter!**

@ConvertingColor