

Converting Colors

CIELCh(81, 17.870, 60.480)

Have a look what the booklet for
CIELCh(81, 17.870, 60.480) contains.

CIELCh(81, 17.825, 60.590)	3
<i>Conversions</i>	4
<i>Details</i>	6
<i>Harmonies</i>	11
<i>Previews</i>	20
<i>Color Blindness Simulation</i>	23
<i>CSS Examples</i>	26

Color

CIELCh(81, 17.825, 60.590)

Conversions

Conversions Part 1

Format	Color
Hex	E5C3AD
RGB	229, 195, 173
RGB Percent	90%, 76%, 68%
CMY	0.1034, 0.2367, 0.3229
CMYK	0.00, 0.15, 0.24, 0.10
HSL	24°, 51%, 79%
HSV	24°, 24%, 90%
XYZ	59.1390, 58.4711, 47.5273
YIQ	202.6580, 27.3260, 0.3660

Conversions

Conversions Part 2

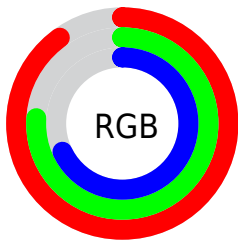
Format	Color
R _Y B	229, 209, 173
Decimal	15057837
CIE Lab	81.00, 8.75, 15.53
CIE LCh	81, 17.825, 60.590
Yxy	58.4711, 0.3581, 0.3541
Android (android.graphics.Color)	4293247917 (0xFFE5C3AD)
YUV	202.6580, -14.6214, 23.1019
Hunter-Lab	76.4664, 4.2355, 16.6751

Details

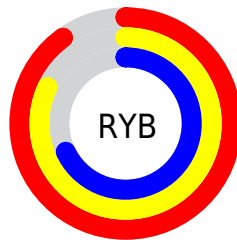
The CIELCh color **81, 17.825, 60.590** is a light color, and the websafe version is hex **FFCCCC**. A complement of this color would be **81, 15.945, 246.216**, and the grayscale version is **81, 0.010, 296.813**.

A 20% lighter version of the original color is **99, 12.212, 104.125**, and **61, 17.725, 59.198** is the 20% darker color. If you saturate the color by 10%, you get **77, 25.953, 59.669**, and if you desaturate by 10%, it is **85, 10.206, 61.552**.

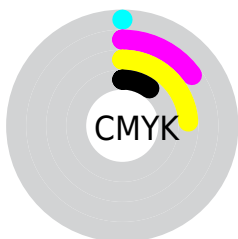
Distribution



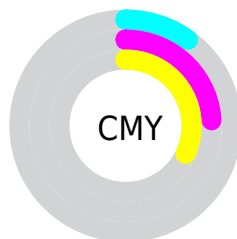
- Red (90%)
- Green (76%)
- Blue (68%)



- Red (90%)
- Yellow (82%)
- Blue (68%)



- Cyan (0%)
- Magenta (15%)
- Yellow (24%)
- Black (10%)



- Cyan (10%)
- Magenta (24%)
- Yellow (32%)


Brightness & Saturation Gradients

These gradients show how the CIELCh color 81, 17.825, 60.590 changes by changing the brightness by 10 percent. The first figure shows a shift by +10% for each color and the second figure -10%.

Similar to the brightness gradients but the following saturation gradients show a change of the CIELCh color 81, 17.825, 60.590 by changing the saturation by 10% instead.

 81, 17.825, 60.590

 81, 17.825, 60.590

 100, 17.825,
60.590

 71, 17.825, 60.590

 61, 17.825, 60.590

 51, 17.825, 60.590

 41, 17.825, 60.590

 31, 17.825, 60.590

 21, 17.825, 60.590

 11, 17.825, 60.590

 1, 17.825, 60.590

 0, 17.825, 60.590

81, 17.825, 60.590

81, 17.825, 60.590

77, 25.953, 59.669

85, 10.206, 61.552

73, 34.611, 58.780

89, 3.058, 62.433

70, 43.778, 57.936

93, 3.666, 243.733

66, 53.348, 57.116

97, 7.683, 217.875

63, 63.041, 56.242

98, 8.976, 198.912

60, 72.231, 55.116

57, 79.755, 53.340

56, 83.105, 52.142

Harmonies

Complementary

The Complementary color scheme is a pair of colors which are on the opposite of each other on the color wheel.



81, 17.825, 60.590



81, 15.945, 246.216

Rectangle

The Rectangle color scheme consists of four colors that form a rectangle on the color wheel.



81, 17.825, 60.590



81, 17.825, 110.590



81, 17.825, 240.590



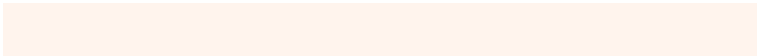
81, 17.825, 290.590

Sweetspot

The Sweet Spot groups the original color and five complimentary colors.



81, 17.825, 60.599



97, 5.261, 62.237



77, 27.534, 339.789



51, 3.425, 62.185



0, 0.000, 0.000



53, 0.007, 296.813

Same Dimension

The Same Dimension uses a secret algorithm to generate beautiful new colors.



81, 17.825, 60.599



87, 23.428, 60.159



88, 25.705, 102.338



46, 3.950, 62.023



44, 68.690, 52.774



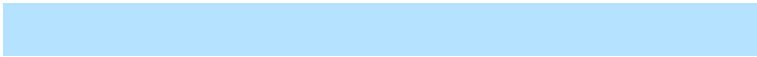
11, 21.334, 49.255

Inverse Universe

The Inverse Universe completely reimagines the original color for something new.



81, 15.945, 246.216



88, 20.455, 247.009



74, 26.820, 288.111



46, 3.801, 244.157



44, 44.363, 271.225



11, 16.585, 261.774

Previews

White Background



This preview shows how the CIELCh color 81, 17.825, 60.590 looks on a white background.

Color Contrast Check

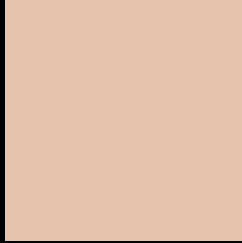
Large Text (above 18pt) WCAG AA × Fail

Any Text WCAG AA × Fail

Large Text (above 18pt) WCAG AAA × Fail

Any Text WCAG AAA × Fail

Black Background



This preview shows how the CIELCh color 81, 17.825, 60.590 looks on a black background.

Color Contrast Check

Large Text (above 18pt) WCAG AA ✓ Pass

Any Text WCAG AA ✓ Pass

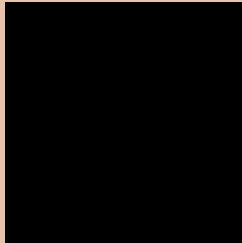
Large Text (above 18pt) WCAG AAA ✓ Pass

Any Text WCAG AAA ✓ Pass

If you want to check with other color combinations, try the [Color Contrast Checker](#).

CIELCh 81, 17.825, 60.590

Background



This preview shows how black text looks on a background with the CIELCh color 81, 17.825, 60.590.



This preview shows how white text looks on a background with the CIELCh color 81, 17.825, 60.590.

Color Blindness Simulation

Color vision deficiency is a very complex topic, and I could not describe the different causes any better than Wikipedia does, so if you want to learn more, you should check out their [article about color blindness](#).

Dichromacy



Original Color

81, 17.825, 60.590

Protanopia

81, 13.759, 92.706

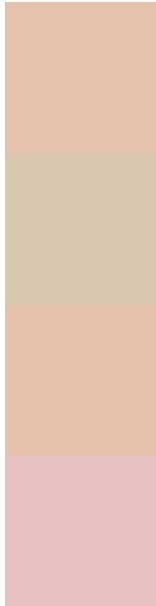
Deuteranopia

81, 18.433, 57.033



Tritanopia
81, 17.472, 353.890

Trichromacy



Original Color
81, 17.825, 60.590

Protanomaly
81, 14.510, 80.232

Deuteranomaly
81, 18.111, 57.783

Tritanomaly
81, 14.802, 18.524

Monochromacy



Original Color
81, 17.825, 60.590

Achromatopsia
81, 0.010, 296.813

Achromatomaly
81, 6.451, 60.558

CSS Examples

Text

The CSS property to change the color of the text to CIELCh 81, 17.825, 60.590 is called "color". The color property can be set on classes, ids or directly on the HTML element.

This example shows how text in the color `rgb(229, 195, 173)` looks like.

```
.text, #text, p{  
    color:rgb(229, 195, 173)  
}
```

If you want to add a text shadow in that color use the text-shadow property, you can generate a text shadow directly with our [CSS Text Shadow Generator](#).

Here you see how black text with a 4 pixel rgb(229, 195, 173) colored shadow looks like.

```
.shadow{ text-shadow: 4px 4px 2px rgb(229, 195, 173) }
```

Border

The CSS property to change the border of an element to CIELCh 81, 17.825, 60.590 is called "border". The border property can be set on classes, ids or directly on the HTML element.

This example shows the color as border, it can be applied via the CSS property "border" or "border-color".

```
.border, #border, table{ border:4px solid rgb(229, 195, 173) }
```

If only the border color should be changed use the property `border-color`.

```
.border{ border-color:rgb(229, 195, 173) }
```

If you want to add a box shadow in that color use:

Here you see how a box with a 4 pixel `rgb(229, 195, 173)` colored shadow looks like.

```
.boxshadow{ -moz-box-shadow:4px 4px 4px  
4px rgb(229, 195, 173); -webkit-box-  
shadow:4px 4px 4px 4px rgb(229, 195, 173);  
box-shadow:4px 4px 4px 4px rgb(229, 195,  
173) }
```

Background

The CSS property to change the background color of an element to CIELCh 81, 17.825, 60.590 is called "background". The background property can be set on classes, ids or directly on the HTML element.

```
.background, #background, body{  
background: rgb(229, 195, 173) }
```

If only the background color should be changed can be used:

```
.background{ background-color: rgb(229,  
195, 173) }
```

This example shows the color as background, it is applied via the CSS property "background".

To optimize and compress your CSS code, you can use our [online CSS compressor and optimizer](#) based on csstidy. If you want to create a linear or radial gradient as background or border, check our [CSS Gradient Generator](#).

Hey! You found this booklet interesting? Support Converting Colors with the new Membership Option!

The pro membership hides all ads, plus gives you double the colors in the color bucket, and more awesome pro features!

[Learn more, Memberships starting at \\$2.50/m!](#)

**Follow me
on Twitter!**

@ConvertingColor