

Converting Colors

CIELCh(81, 20.314, 73.590)

Have a look what the booklet for
CIELCh(81, 20.314, 73.590) contains.

CIELCh(81, 20.389, 72.908)	3
<i>Conversions</i>	4
<i>Details</i>	6
<i>Harmonies</i>	11
<i>Previews</i>	20
<i>Color Blindness Simulation</i>	23
<i>CSS Examples</i>	26

Color

CIELCh(81, 20.389, 72.908)

Conversions

Conversions Part 1

Format	Color
Hex	E2C4A5
RGB	226, 196, 165
RGB Percent	89%, 77%, 65%
CMY	0.1131, 0.2307, 0.3523
CMYK	0.00, 0.13, 0.27, 0.11
HSL	30°, 51%, 77%
HSV	30°, 27%, 89%
XYZ	57.9990, 58.4711, 43.9014
YIQ	201.4360, 27.8310, -3.2810

Conversions

Conversions Part 2

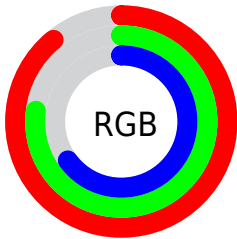
Format	Color
RYB	224, 226, 165
Decimal	14861477
CIELab	81.00, 5.99, 19.49
CIELCh	81, 20.389, 72.908
Yxy	58.4711, 0.3617, 0.3646
Android (android.graphics.Color)	4293051557 (0xFFE2C4A5)
YUV	201.4360, -17.9629, 21.5426
Hunter-Lab	76.4664, 1.5743, 19.4865

Details

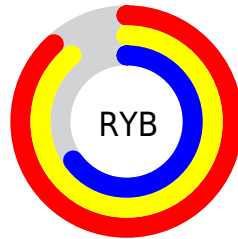
The CIELCh color **81, 20.389, 72.908** is a light color, and the websafe version is hex **FFCC99**. A complement of this color would be **78, 19.009, 260.470**, and the grayscale version is **81, 0.010, 296.813**.

A 20% lighter version of the original color is **99, 16.725, 106.386**, and **61, 20.374, 72.214** is the 20% darker color. If you saturate the color by 10%, you get **78, 28.601, 71.637**, and if you desaturate by 10%, it is **84, 12.538, 74.174**.

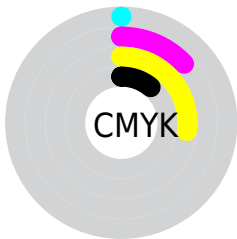
Distribution



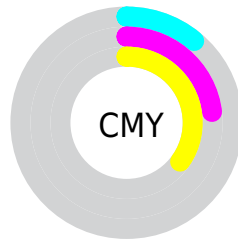
- Red (89%)
- Green (77%)
- Blue (65%)



- Red (88%)
- Yellow (89%)
- Blue (65%)



- Cyan (0%)
- Magenta (13%)
- Yellow (27%)
- Black (11%)



- Cyan (11%)
- Magenta (23%)
- Yellow (35%)

Brightness & Saturation Gradients

These gradients show how the CIELCh color 81, 20.389, 72.908 changes by changing the brightness by 10 percent. The first figure shows a shift by +10% for each color and the second figure -10%.

Similar to the brightness gradients but the following saturation gradients show a change of the CIELCh color 81, 20.389, 72.908 by changing the saturation by 10% instead.

81, 20.389, 72.908

81, 20.389, 72.908

100, 20.389,
72.908

71, 20.389, 72.908

61, 20.389, 72.908

51, 20.389, 72.908

41, 20.389, 72.908

31, 20.389, 72.908

21, 20.389, 72.908

11, 20.389, 72.908

1, 20.389, 72.908

0, 20.389, 72.908

81, 20.389, 72.908

81, 20.389, 72.908

78, 28.601, 71.637

84, 12.538, 74.174

75, 37.155, 70.342

88, 5.034, 75.376

72, 45.981, 69.021

91, 2.148, 256.861

69, 54.889, 67.634

94, 8.774, 256.714

66, 63.479, 66.086

97, 8.810, 209.756

63, 70.993, 64.172

98, 9.788, 198.855

61, 76.381, 61.564

60, 77.794, 60.742

Harmonies

Complementary

The Complementary color scheme is a pair of colors which are on the opposite of each other on the color wheel.



81, 20.389, 72.908



78, 19.009, 260.470

Rectangle

The Rectangle color scheme consists of four colors that form a rectangle on the color wheel.



81, 20.389, 72.908



81, 20.389, 122.908



81, 20.389, 252.908



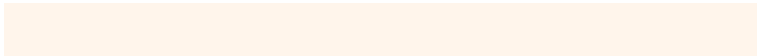
81, 20.389, 302.908

Sweetspot

The Sweet Spot groups the original color and five complimentary colors.



81, 20.389, 72.916



97, 6.380, 75.253



74, 27.915, 346.123



51, 4.550, 75.076



0, 0.000, 0.000



53, 0.007, 296.813

Same Dimension

The Same Dimension uses a secret algorithm to generate beautiful new colors.



81, 20.389, 72.916



88, 26.984, 72.248



89, 31.381, 107.561



45, 4.096, 75.091



48, 64.275, 61.421



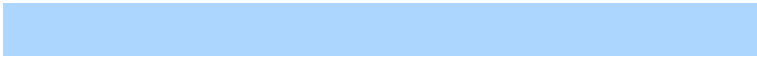
11, 19.652, 61.167

Inverse Universe

The Inverse Universe completely reimagines the original color for something new.



78, 19.009, 260.470



84, 24.774, 261.519



70, 33.479, 293.428



45, 4.011, 257.606



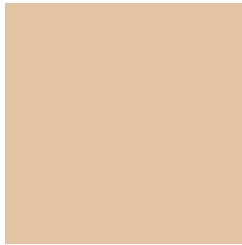
38, 55.386, 284.700



8, 19.238, 275.523

Previews

White Background



This preview shows how the CIELCh color 81, 20.389, 72.908 looks on a white background.

Color Contrast Check

Large Text (above 18pt) WCAG AA × Fail

Any Text WCAG AA × Fail

Large Text (above 18pt) WCAG AAA × Fail

Any Text WCAG AAA × Fail

Black Background



This preview shows how the CIELCh color 81, 20.389, 72.908 looks on a black background.

Color Contrast Check

Large Text (above 18pt) WCAG AA ✓ Pass

Any Text WCAG AA ✓ Pass

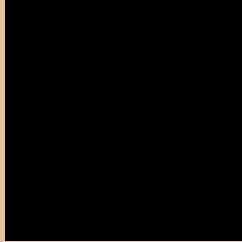
Large Text (above 18pt) WCAG AAA ✓ Pass

Any Text WCAG AAA ✓ Pass

If you want to check with other color combinations, try the [Color Contrast Checker](#).

CIELCh 81, 20.389, 72.908

Background



This preview shows how black text looks on a background with the CIELCh color 81, 20.389, 72.908.



This preview shows how white text looks on a background with the CIELCh color 81, 20.389, 72.908.

Color Blindness Simulation

Color vision deficiency is a very complex topic, and I could not describe the different causes any better than Wikipedia does, so if you want to learn more, you should check out their [article about color blindness](#).

Dichromacy



Original Color

81, 20.389, 72.908

Protanopia

81, 18.561, 93.869

Deuteranopia

81, 21.590, 61.313



Tritanopia
81, 16.572, 354.273

Trichromacy



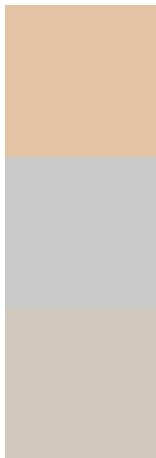
Original Color
81, 20.389, 72.908

Protanomaly
81, 19.019, 85.389

Deuteranomaly
81, 21.053, 64.458

Tritanomaly
81, 13.741, 24.830

Monochromacy



Original Color
81, 20.389, 72.908

Achromatopsia
81, 0.010, 296.813

Achromatomaly
81, 7.131, 74.098

CSS Examples

Text

The CSS property to change the color of the text to CIELCh 81, 20.389, 72.908 is called "color". The color property can be set on classes, ids or directly on the HTML element.

This example shows how text in the color `rgb(226, 196, 165)` looks like.

```
.text, #text, p{  
    color:rgb(226, 196, 165)  
}
```

If you want to add a text shadow in that color use the text-shadow property, you can generate a text shadow directly with our [CSS Text Shadow Generator](#).

Here you see how black text with a 4 pixel rgb(226, 196, 165) colored shadow looks like.

```
.shadow{ text-shadow: 4px 4px 2px rgb(226, 196, 165) }
```

Border

The CSS property to change the border of an element to CIELCh 81, 20.389, 72.908 is called "border". The border property can be set on classes, ids or directly on the HTML element.

This example shows the color as border, it can be applied via the CSS property "border" or "border-color".

```
.border, #border, table{ border:4px solid rgb(226, 196, 165) }
```

If only the border color should be changed use the property `border-color`.

```
.border{ border-color:rgb(226, 196, 165) }
```

If you want to add a box shadow in that color use:

Here you see how a box with a 4 pixel `rgb(226, 196, 165)` colored shadow looks like.

```
.boxshadow{ -moz-box-shadow:4px 4px 4px  
4px rgb(226, 196, 165); -webkit-box-  
shadow:4px 4px 4px 4px rgb(226, 196, 165);  
box-shadow:4px 4px 4px 4px rgb(226, 196,  
165) }
```

Background

The CSS property to change the background color of an element to CIELCh 81, 20.389, 72.908 is called "background". The background property can be set on classes, ids or directly on the HTML element.

```
.background, #background, body{  
background: rgb(226, 196, 165) }
```

If only the background color should be changed can be used:

```
.background{ background-color: rgb(226,  
196, 165) }
```

This example shows the color as background, it is applied via the CSS property "background".

To optimize and compress your CSS code, you can use our [online CSS compressor and optimizer](#) based on csstidy. If you want to create a linear or radial gradient as background or border, check our [CSS Gradient Generator](#).

Hey! You found this booklet interesting? Support Converting Colors with the new Membership Option!

The pro membership hides all ads, plus gives you double the colors in the color bucket, and more awesome pro features!

[Learn more, Memberships starting at \\$2.50/m!](#)

**Follow me
on Twitter!**

@ConvertingColor