

Converting Colors

CIELCh(81, 27.688, 18.705)

Have a look what the booklet for
CIELCh(81, 27.688, 18.705) contains.

CIELCh(81, 27.541, 18.458)	3
<i>Conversions</i>	4
<i>Details</i>	6
<i>Harmonies</i>	11
<i>Previews</i>	20
<i>Color Blindness Simulation</i>	23
<i>CSS Examples</i>	26

Color

CIELCh(81, 27.541, 18.458)

Conversions

Conversions Part 1

Format	Color
Hex	FEB7BA
RGB	254, 183, 186
RGB Percent	100%, 72%, 73%
CMY	0.0040, 0.2824, 0.2707
CMYK	0.00, 0.28, 0.27, 0.00
HSL	357°, 97%, 86%
HSV	357°, 28%, 100%
XYZ	66.6569, 58.4711, 54.2170
YIQ	204.5710, 41.3530, 15.9850

Conversions

Conversions Part 2

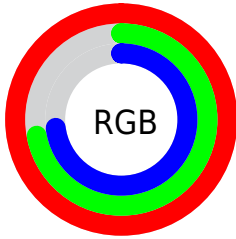
Format	Color
RYB	254, 183, 186
Decimal	16693178
CIELab	81.00, 26.12, 8.72
CIElCh	81, 27.541, 18.458
Yxy	58.4711, 0.3717, 0.3260
Android (android.graphics.Color)	4294883258 (0xFFFEb7BA)
YUV	204.5710, -9.1555, 43.3492
Hunter-Lab	76.4664, 21.7849, 11.4880

Details

The CIELCh color **81, 27.541, 18.458** is a light color, and the websafe version is hex **FFCCCC**. A complement of this color would be **95, 23.085, 194.131**, and the grayscale version is **82, 0.010, 296.813**.

A 20% lighter version of the original color is **96, 5.914, 4.680**, and **61, 27.347, 18.921** is the 20% darker color. If you saturate the color by 10%, you get **75, 38.640, 19.906**, and if you desaturate by 10%, it is **88, 17.066, 17.327**.

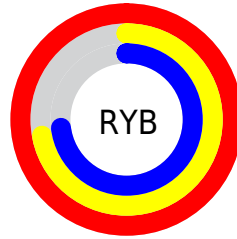
Distribution



Red (100%)

Green (72%)

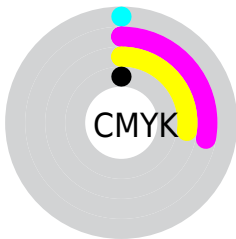
Blue (73%)



Red (100%)

Yellow (72%)

Blue (73%)

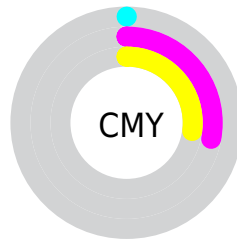


Cyan (0%)

Magenta (28%)

Yellow (27%)

Black (0%)



Cyan (0%)

Magenta (28%)

Yellow (27%)

Brightness & Saturation Gradients

These gradients show how the CIELCh color 81, 27.541, 18.458 changes by changing the brightness by 10 percent. The first figure shows a shift by +10% for each color and the second figure -10%.

Similar to the brightness gradients but the following saturation gradients show a change of the CIELCh color 81, 27.541, 18.458 by changing the saturation by 10% instead.

 81, 27.541, 18.458

 81, 27.541, 18.458

 100, 27.541,
18.458

 71, 27.541, 18.458

 61, 27.541, 18.458

 51, 27.541, 18.458

 41, 27.541, 18.458

 31, 27.541, 18.458

 21, 27.541, 18.458

 11, 27.541, 18.458

 1, 27.541, 18.458

 0, 27.541, 18.458

81, 27.541, 18.458

81, 27.541, 18.458

75, 38.640, 19.906

88, 17.066, 17.327

69, 50.215, 21.767

94, 7.285, 16.390

64, 61.995, 24.167

100, 0.354,
201.257

60, 73.610, 27.214

56, 84.614, 30.912

54, 94.384, 34.955

53, 101.602,
38.405

53, 102.648,
38.854

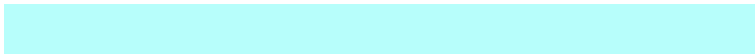
Harmonies

Complementary

The Complementary color scheme is a pair of colors which are on the opposite of each other on the color wheel.



81, 27.541, 18.458



95, 23.085, 194.131

Rectangle

The Rectangle color scheme consists of four colors that form a rectangle on the color wheel.



81, 27.541, 18.458



81, 27.541, 68.458



81, 27.541, 198.458



81, 27.541, 248.458

Sweetspot

The Sweet Spot groups the original color and five complimentary colors.



81, 27.539, 18.463



95, 7.354, 16.395



83, 43.926, 324.538



49, 5.256, 16.530



0, 0.000, 0.000



53, 0.007, 296.813

Same Dimension

The Same Dimension uses a secret algorithm to generate beautiful new colors.



81, 27.539, 18.463



77, 34.297, 19.294



88, 22.708, 66.571



49, 5.256, 16.530



40, 82.422, 38.388



10, 33.025, 25.486

Inverse Universe

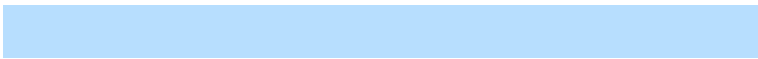
The Inverse Universe completely reimagines the original color for something new.



81, 27.539, 18.463



77, 34.297, 19.294



87, 20.500, 253.989



49, 5.256, 16.530



40, 82.422, 38.388



10, 33.025, 25.486

Previews

White Background



This preview shows how the CIELCh color 81, 27.541, 18.458 looks on a white background.

Color Contrast Check

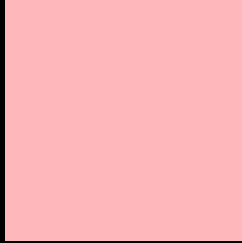
Large Text (above 18pt) WCAG AA × Fail

Any Text WCAG AA × Fail

Large Text (above 18pt) WCAG AAA × Fail

Any Text WCAG AAA × Fail

Black Background



This preview shows how the CIE LCh color 81, 27.541, 18.458 looks on a black background.

Color Contrast Check

Large Text (above 18pt) WCAG AA ✓ Pass

Any Text WCAG AA ✓ Pass

Large Text (above 18pt) WCAG AAA ✓ Pass

Any Text WCAG AAA ✓ Pass

If you want to check with other color combinations, try the [Color Contrast Checker](#).

CIELCh 81, 27.541, 18.458

Background



This preview shows how black text looks on a background with the CIELCh color 81, 27.541, 18.458.

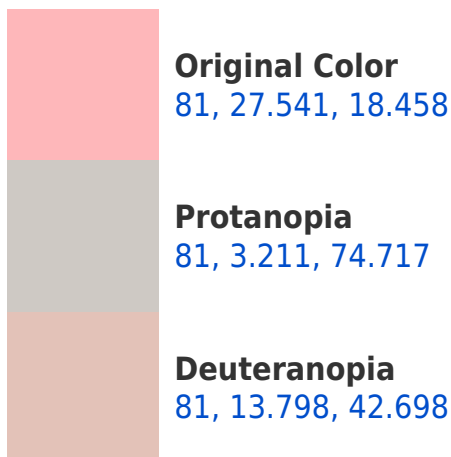


This preview shows how white text looks on a background with the CIELCh color 81, 27.541, 18.458.

Color Blindness Simulation

Color vision deficiency is a very complex topic, and I could not describe the different causes any better than Wikipedia does, so if you want to learn more, you should check out their [article about color blindness](#).

Dichromacy





Tritanopia
81, 28.533, 8.096

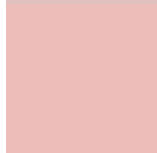
Trichromacy



Original Color
81, 27.541, 18.458



Protanomaly
81, 11.021, 25.699



Deuteranomaly
81, 18.382, 29.002



Tritanomaly
81, 28.374, 11.238

Monochromacy



Original Color
81, 27.541, 18.458



Achromatopsia
82, 0.010, 296.813



Achromatomaly
82, 9.741, 17.016

CSS Examples

Text

The CSS property to change the color of the text to CIELCh 81, 27.541, 18.458 is called "color". The color property can be set on classes, ids or directly on the HTML element.

This example shows how text in the color `rgb(254, 183, 186)` looks like.

```
.text, #text, p{  
    color:rgb(254, 183, 186)  
}
```

If you want to add a text shadow in that color use the text-shadow property, you can generate a text shadow directly with our [CSS Text Shadow Generator](#).

Here you see how black text with a 4 pixel rgb(254, 183, 186) colored shadow looks like.

```
.shadow{ text-shadow: 4px 4px 2px rgb(254, 183, 186) }
```

Border

The CSS property to change the border of an element to CIELCh 81, 27.541, 18.458 is called "border". The border property can be set on classes, ids or directly on the HTML element.

This example shows the color as border, it can be applied via the CSS property "border" or "border-color".

```
.border, #border, table{ border:4px solid rgb(254, 183, 186) }
```

If only the border color should be changed use the property `border-color`.

```
.border{ border-color:rgb(254, 183, 186) }
```

If you want to add a box shadow in that color use:

Here you see how a box with a 4 pixel `rgb(254, 183, 186)` colored shadow looks like.

```
.boxshadow{ -moz-box-shadow:4px 4px 4px  
4px rgb(254, 183, 186); -webkit-box-  
shadow:4px 4px 4px 4px rgb(254, 183, 186);  
box-shadow:4px 4px 4px 4px rgb(254, 183,  
186) }
```

Background

The CSS property to change the background color of an element to CIELCh 81, 27.541, 18.458 is called "background". The background property can be set on classes, ids or directly on the HTML element.

```
.background, #background, body{  
background: rgb(254, 183, 186) }
```

If only the background color should be changed can be used:

```
.background{ background-color: rgb(254,  
183, 186) }
```

This example shows the color as background, it is applied via the CSS property "background".

To optimize and compress your CSS code, you can use our [online CSS compressor and optimizer](#) based on csstidy. If you want to create a linear or radial gradient as background or border, check our [CSS Gradient Generator](#).

Hey! You found this booklet interesting? Support Converting Colors with the new Membership Option!

The pro membership hides all ads, plus gives you double the colors in the color bucket, and more awesome pro features!

[Learn more, Memberships starting at \\$2.50/m!](#)

**Follow me
on Twitter!**

@ConvertingColor