

Converting Colors

CIELCh(81, 28.316, 13.352)

Have a look what the booklet for
CIELCh(81, 28.316, 13.352) contains.

CIELCh(81, 28.319, 13.348)	3
<i>Conversions</i>	4
<i>Details</i>	6
<i>Harmonies</i>	11
<i>Previews</i>	20
<i>Color Blindness Simulation</i>	23
<i>CSS Examples</i>	26

Color

CIELCh(81, 28.319, 13.348)

Conversions

Conversions Part 1

Format	Color
Hex	FFB6BE
RGB	255, 182, 190
RGB Percent	100%, 71%, 75%
CMY	0.0000, 0.2860, 0.2547
CMYK	0.00, 0.29, 0.25, 0.00
HSL	353°, 100%, 86%
HSV	353°, 29%, 100%
XYZ	67.3026, 58.4711, 56.4867
YIQ	204.7390, 40.9400, 17.9640

Conversions

Conversions Part 2

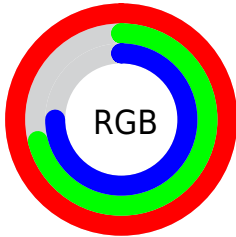
Format	Color
RYB	255, 182, 190
Decimal	16758462
CIELab	81.00, 27.55, 6.54
CIELCh	81, 28.319, 13.348
Yxy	58.4711, 0.3693, 0.3208
Android (android.graphics.Color)	4294948542 (0xFFFFB6BE)
YUV	204.7390, -7.2663, 44.0789
Hunter-Lab	76.4664, 23.2922, 9.7282

Details

The CIELCh color **81, 28.319, 13.348** is a light color, and the websafe version is hex **FFCCCC**. A complement of this color would be **95, 24.236, 188.087**, and the grayscale version is **82, 0.010, 296.813**.

A 20% lighter version of the original color is **96, 7.313, 345.769**, and **61, 28.569, 12.627** is the 20% darker color. If you saturate the color by 10%, you get **75, 39.220, 14.907**, and if you desaturate by 10%, it is **87, 17.851, 12.083**.

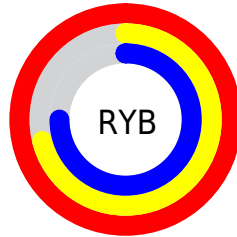
Distribution



Red (100%)

Green (71%)

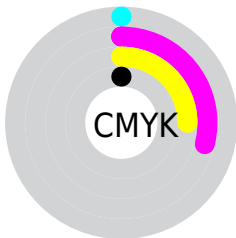
Blue (75%)



Red (100%)

Yellow (71%)

Blue (75%)

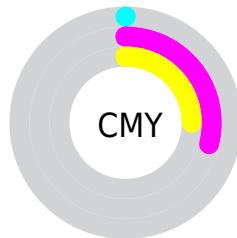


Cyan (0%)

Magenta (29%)

Yellow (25%)

Black (0%)



Cyan (0%)

Magenta (29%)

Yellow (25%)

Brightness & Saturation Gradients

These gradients show how the CIELCh color 81, 28.319, 13.348 changes by changing the brightness by 10 percent. The first figure shows a shift by +10% for each color and the second figure -10%.

Similar to the brightness gradients but the following saturation gradients show a change of the CIELCh color 81, 28.319, 13.348 by changing the saturation by 10% instead.

81, 28.319, 13.348

81, 28.319, 13.348

100, 28.319,
13.348

71, 28.319, 13.348

61, 28.319, 13.348

51, 28.319, 13.348

41, 28.319, 13.348

31, 28.319, 13.348

21, 28.319, 13.348

11, 28.319, 13.348

1, 28.319, 13.348

0, 28.319, 13.348

81, 28.319, 13.348

81, 28.319, 13.348

75, 39.220, 14.907

87, 17.851, 12.083

69, 50.438, 16.885

94, 7.993, 11.024

64, 61.640, 19.409

100, 0.012,
296.813

60, 72.439, 22.615

57, 82.452, 26.577

54, 91.360, 31.155

53, 98.729, 35.714

53, 99.639, 36.246

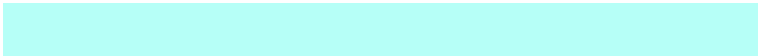
Harmonies

Complementary

The Complementary color scheme is a pair of colors which are on the opposite of each other on the color wheel.



81, 28.319, 13.348



95, 24.236, 188.087

Rectangle

The Rectangle color scheme consists of four colors that form a rectangle on the color wheel.



81, 28.319, 13.348



81, 28.319, 63.348



81, 28.319, 193.348



81, 28.319, 243.348

Sweetspot

The Sweet Spot groups the original color and five complimentary colors.



81, 28.293, 13.343



94, 8.373, 11.065



82, 44.324, 322.611



49, 5.846, 11.212



0, 0.000, 0.000



53, 0.007, 296.813

Same Dimension

The Same Dimension uses a secret algorithm to generate beautiful new colors.



81, 28.293, 13.343



78, 34.140, 14.143



87, 23.058, 59.120



50, 5.298, 11.116



40, 79.513, 35.454



10, 32.536, 22.716

Inverse Universe

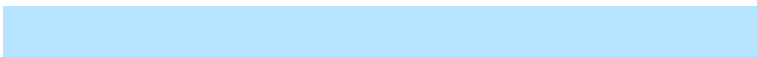
The Inverse Universe completely reimagines the original color for something new.



81, 28.293, 13.343



78, 34.140, 14.143



88, 20.080, 245.678



50, 5.298, 11.116



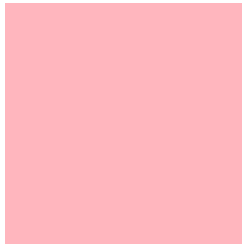
40, 79.513, 35.454



10, 32.536, 22.716

Previews

White Background



This preview shows how the CIELCh color 81, 28.319, 13.348 looks on a white background.

Color Contrast Check

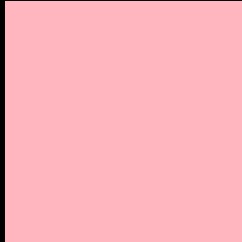
Large Text (above 18pt) WCAG AA × Fail

Any Text WCAG AA × Fail

Large Text (above 18pt) WCAG AAA × Fail

Any Text WCAG AAA × Fail

Black Background



This preview shows how the CIE LCh color 81, 28.319, 13.348 looks on a black background.

Color Contrast Check

Large Text (above 18pt) WCAG AA ✓ Pass

Any Text WCAG AA ✓ Pass

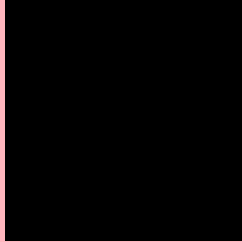
Large Text (above 18pt) WCAG AAA ✓ Pass

Any Text WCAG AAA ✓ Pass

If you want to check with other color combinations, try the [Color Contrast Checker](#).

CIELCh 81, 28.319, 13.348

Background



This preview shows how black text looks on a background with the CIELCh color 81, 28.319, 13.348.

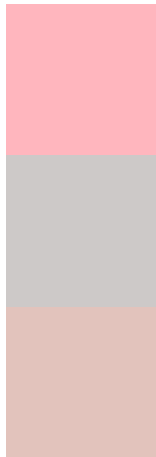


This preview shows how white text looks on a background with the CIELCh color 81, 28.319, 13.348.

Color Blindness Simulation

Color vision deficiency is a very complex topic, and I could not describe the different causes any better than Wikipedia does, so if you want to learn more, you should check out their [article about color blindness](#).

Dichromacy



Original Color

81, 28.319, 13.348

Protanopia

81, 1.553, 39.071

Deuteranopia

81, 12.422, 37.486

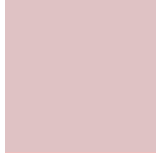


Tritanopia
81, 28.533, 8.096

Trichromacy



Original Color
81, 28.319, 13.348



Protanomaly
81, 10.936, 14.697



Deuteranomaly
81, 18.036, 22.489

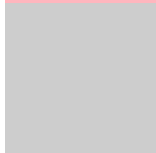


Tritanomaly
81, 28.417, 10.186

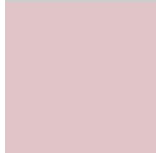
Monochromacy



Original Color
81, 28.319, 13.348



Achromatopsia
82, 0.010, 296.813



Achromatomaly
82, 9.821, 10.869

CSS Examples

Text

The CSS property to change the color of the text to CIELCh 81, 28.319, 13.348 is called "color". The color property can be set on classes, ids or directly on the HTML element.

This example shows how text in the color `rgb(255, 182, 190)` looks like.

```
.text, #text, p{  
    color:rgb(255, 182, 190)  
}
```

If you want to add a text shadow in that color use the text-shadow property, you can generate a text shadow directly with our [CSS Text Shadow Generator](#).

Here you see how black text with a 4 pixel rgb(255, 182, 190) colored shadow looks like.

```
.shadow{ text-shadow: 4px 4px 2px rgb(255, 182, 190) }
```

Border

The CSS property to change the border of an element to CIELCh 81, 28.319, 13.348 is called "border". The border property can be set on classes, ids or directly on the HTML element.

This example shows the color as border, it can be applied via the CSS property "border" or "border-color".

```
.border, #border, table{ border:4px solid rgb(255, 182, 190) }
```

If only the border color should be changed use the property `border-color`.

```
.border{ border-color:rgb(255, 182, 190) }
```

If you want to add a box shadow in that color use:

Here you see how a box with a 4 pixel `rgb(255, 182, 190)` colored shadow looks like.

```
.boxshadow{ -moz-box-shadow:4px 4px 4px  
4px rgb(255, 182, 190); -webkit-box-  
shadow:4px 4px 4px 4px rgb(255, 182, 190);  
box-shadow:4px 4px 4px 4px rgb(255, 182,  
190) }
```

Background

The CSS property to change the background color of an element to CIELCh 81, 28.319, 13.348 is called "background". The background property can be set on classes, ids or directly on the HTML element.

```
.background, #background, body{  
background: rgb(255, 182, 190) }
```

If only the background color should be changed can be used:

```
.background{ background-color: rgb(255,  
182, 190) }
```

This example shows the color as background, it is applied via the CSS property "background".

To optimize and compress your CSS code, you can use our [online CSS compressor and optimizer](#) based on csstidy. If you want to create a linear or radial gradient as background or border, check our [CSS Gradient Generator](#).

Hey! You found this booklet interesting? Support Converting Colors with the new Membership Option!

The pro membership hides all ads, plus gives you double the colors in the color bucket, and more awesome pro features!

[Learn more, Memberships starting at \\$2.50/m!](#)

**Follow me
on Twitter!**

@ConvertingColor