

Converting Colors

CIELCh(81, 5.488, 14.699)

Have a look what the booklet for
CIELCh(81, 5.488, 14.699) contains.

| | |
|--|----|
| CIELCh(81, 5.586, 14.313) | 3 |
| <i>Conversions</i> | 4 |
| <i>Details</i> | 6 |
| <i>Harmonies</i> | 11 |
| <i>Previews</i> | 20 |
| <i>Color Blindness Simulation</i> | 23 |
| <i>CSS Examples</i> | 26 |

Color

CIELCh(81, 5.586, 14.313)

Conversions

Conversions Part 1

| Format | Color |
|---------------|---------------------------|
| Hex | D5C6C7 |
| RGB | 213, 198, 199 |
| RGB Percent | 84%, 78%, 78% |
| CMY | 0.1658, 0.2246, 0.2207 |
| CMYK | 0.00, 0.07, 0.07, 0.17 |
| HSL | 356°, 15%, 80% |
| HSV | 356°, 7%, 83% |
| XYZ | 57.7614, 58.4711, 62.1010 |
| YIQ | 202.5990, 8.6190, 3.4910 |

Conversions

Conversions Part 2

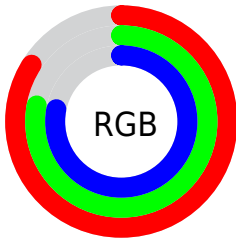
| Format | Color |
|-------------------------------------|------------------------------|
| R _Y B | 213, 198, 199 |
| Decimal | 14010055 |
| CIE Lab | 81.00, 5.41, 1.38 |
| CIE LCh | 81, 5.586, 14.313 |
| Yxy | 58.4711, 0.3239, 0.3279 |
| Android (android.graphics.Color) | 4292200135 (0xFFD5C6C7) |
| YUV | 202.5990, -1.7743, 9.1217 |
| Hunter-Lab | 76.4664, 1.0197, 5.3750 |

Details

The CIELCh color **81, 5.586, 14.313** is a light color, and the websafe version is hex **CCCCCC**. A complement of this color would be **84, 5.371, 193.502**, and the grayscale version is **81, 0.010, 296.813**.

A 20% lighter version of the original color is **100, 0.012, 296.813**, and **61, 5.545, 14.084** is the 20% darker color. If you saturate the color by 10%, you get **75, 13.988, 15.296**, and if you desaturate by 10%, it is **87, 2.254, 193.948**.

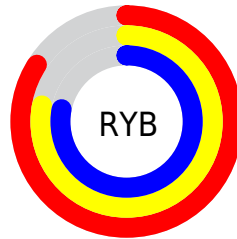
Distribution



Red (84%)

Green (78%)

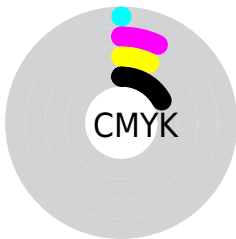
Blue (78%)



Red (84%)

Yellow (78%)

Blue (78%)

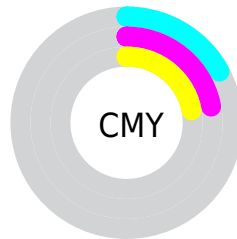


Cyan (0%)

Magenta (7%)

Yellow (7%)

Black (17%)



Cyan (17%)

Magenta (22%)

Yellow (22%)

Brightness & Saturation Gradients

These gradients show how the CIELCh color 81, 5.586, 14.313 changes by changing the brightness by 10 percent. The first figure shows a shift by +10% for each color and the second figure -10%.

Similar to the brightness gradients but the following saturation gradients show a change of the CIELCh color 81, 5.586, 14.313 by changing the saturation by 10% instead.

81, 5.586, 14.313

81, 5.586, 14.313

100, 5.586, 14.313

71, 5.586, 14.313

61, 5.586, 14.313

51, 5.586, 14.313

41, 5.586, 14.313

31, 5.586, 14.313

21, 5.586, 14.313

11, 5.586, 14.313

1, 5.586, 14.313

0, 5.586, 14.313

81, 5.586, 14.313

81, 5.586, 14.313

75, 13.988, 15.296

87, 2.254, 193.948

70, 22.955, 16.437

93, 9.555, 193.145

64, 32.431, 17.865

97, 14.141,
198.563

59, 42.283, 19.684

55, 52.290, 22.015

51, 62.145, 24.979

48, 71.499, 28.629

46, 79.962, 32.805

45, 86.848, 36.844

Harmonies

Complementary

The Complementary color scheme is a pair of colors which are on the opposite of each other on the color wheel.



81, 5.586, 14.313



84, 5.371, 193.502

Rectangle

The Rectangle color scheme consists of four colors that form a rectangle on the color wheel.



81, 5.586, 14.313



81, 5.586, 64.313



81, 5.586, 194.313



81, 5.586, 244.313

Sweetspot

The Sweet Spot groups the original color and five complimentary colors.



81, 5.584, 14.331



99, 1.805, 13.684



81, 9.478, 322.971



53, 1.026, 13.657



0, 0.000, 0.000



53, 0.007, 296.813

Same Dimension

The Same Dimension uses a secret algorithm to generate beautiful new colors.



81, 5.584, 14.331



95, 7.370, 14.430



83, 4.638, 67.004



42, 4.560, 14.556



35, 74.639, 37.170



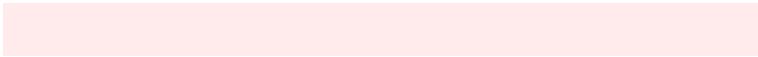
5, 21.965, 16.804

Inverse Universe

The Inverse Universe completely reimagines the original color for something new.



81, 5.584, 14.331



95, 7.370, 14.430



82, 4.534, 248.792



42, 4.560, 14.556



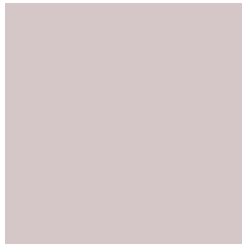
35, 74.639, 37.170



5, 21.965, 16.804

Previews

White Background



This preview shows how the CIELCh color 81, 5.586, 14.313 looks on a white background.

Color Contrast Check

Large Text (above 18pt) WCAG AA × Fail

Any Text WCAG AA × Fail

Large Text (above 18pt) WCAG AAA × Fail

Any Text WCAG AAA × Fail

Black Background



This preview shows how the CIELCh color 81, 5.586, 14.313 looks on a black background.

Color Contrast Check

Large Text (above 18pt) WCAG AA ✓ Pass

Any Text WCAG AA ✓ Pass

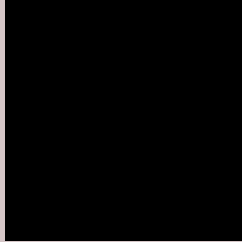
Large Text (above 18pt) WCAG AAA ✓ Pass

Any Text WCAG AAA ✓ Pass

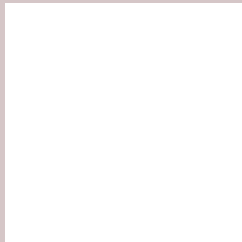
If you want to check with other color combinations, try the [Color Contrast Checker](#).

CIELCh 81, 5.586, 14.313

Background



This preview shows how black text looks on a background with the CIELCh color 81, 5.586, 14.313.




This preview shows how white text looks on a background with the CIELCh color 81, 5.586, 14.313.

Color Blindness Simulation

Color vision deficiency is a very complex topic, and I could not describe the different causes any better than Wikipedia does, so if you want to learn more, you should check out their [article about color blindness](#).

Dichromacy





Tritanopia
81, 10.350, 329.868

Trichromacy



Original Color
81, 5.586, 14.313

Protanomaly
81, 3.362, 10.439

Deuteranomaly
81, 8.341, 9.052

Tritanomaly
81, 8.205, 339.743

Monochromacy



Original Color
81, 5.586, 14.313

Achromatopsia
81, 0.010, 296.813

Achromatomaly
81, 2.272, 5.846

CSS Examples

Text

The CSS property to change the color of the text to CIELCh 81, 5.586, 14.313 is called "color". The color property can be set on classes, ids or directly on the HTML element.

This example shows how text in the color `rgb(213, 198, 199)` looks like.

```
.text, #text, p{  
    color:rgb(213, 198, 199)  
}
```

If you want to add a text shadow in that color use the text-shadow property, you can generate a text shadow directly with our [CSS Text Shadow Generator](#).

Here you see how black text with a 4 pixel rgb(213, 198, 199) colored shadow looks like.

```
.shadow{ text-shadow: 4px 4px 2px rgb(213, 198, 199) }
```

Border

The CSS property to change the border of an element to CIELCh 81, 5.586, 14.313 is called "border". The border property can be set on classes, ids or directly on the HTML element.

This example shows the color as border, it can be applied via the CSS property "border" or "border-color".

```
.border, #border, table{ border:4px solid rgb(213, 198, 199) }
```

If only the border color should be changed use the property border-color.

```
.border{ border-color:rgb(213, 198, 199) }
```

If you want to add a box shadow in that color use:

Here you see how a box with a 4 pixel rgb(213, 198, 199) colored shadow looks like.

```
.boxshadow{ -moz-box-shadow:4px 4px 4px  
4px rgb(213, 198, 199); -webkit-box-  
shadow:4px 4px 4px 4px rgb(213, 198, 199);  
box-shadow:4px 4px 4px 4px rgb(213, 198,  
199) }
```

Background

The CSS property to change the background color of an element to CIELCh 81, 5.586, 14.313 is called "background". The background property can be set on classes, ids or directly on the HTML element.

```
.background, #background, body{  
background: rgb(213, 198, 199) }
```

If only the background color should be changed can be used:

```
.background{ background-color: rgb(213,  
198, 199) }
```

This example shows the color as background, it is applied via the CSS property "background".

To optimize and compress your CSS code, you can use our [online CSS compressor and optimizer](#) based on csstidy. If you want to create a linear or radial gradient as background or border, check our [CSS Gradient Generator](#).

Hey! You found this booklet interesting? Support Converting Colors with the new Membership Option!

The pro membership hides all ads, plus gives you double the colors in the color bucket, and more awesome pro features!

[Learn more, Memberships starting at \\$2.50/m!](#)

**Follow me
on Twitter!**

@ConvertingColor