

Converting Colors

CIELCh(81, 6.549, 24.297)

Have a look what the booklet for
CIELCh(81, 6.549, 24.297) contains.

| | |
|--|----|
| CIELCh(81, 6.735, 24.340) | 3 |
| <i>Conversions</i> | 4 |
| <i>Details</i> | 6 |
| <i>Harmonies</i> | 11 |
| <i>Previews</i> | 20 |
| <i>Color Blindness Simulation</i> | 23 |
| <i>CSS Examples</i> | 26 |

Color

CIELCh(81, 6.735, 24.340)

Conversions

Conversions Part 1

| Format | Color |
|-------------|---------------------------|
| Hex | D7C5C4 |
| RGB | 215, 197, 196 |
| RGB Percent | 84%, 77%, 77% |
| CMY | 0.1562, 0.2268, 0.2307 |
| CMYK | 0.00, 0.08, 0.09, 0.16 |
| HSL | 3°, 19%, 81% |
| HSV | 3°, 9%, 84% |
| XYZ | 58.0581, 58.4711, 60.5473 |
| YIQ | 202.2680, 11.0490, 3.5050 |

Conversions

Conversions Part 2

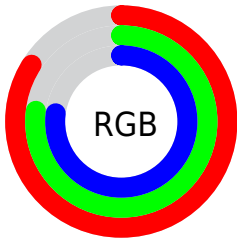
| Format | Color |
|-------------------------------------|--|
| RYB | 215, 197, 196 |
| Decimal | 14140868 |
| CIELab | 81.00, 6.14, 2.78 |
| CIELCh | 81, 6.735, 24.340 |
| Yxy | 58.4711, 0.3279, 0.3302 |
| Android (android.graphics.Color) | 4292330948 (0xFFD7C5C4) |
| YUV | 202.2680, -3.0901, 11.1660 |
| Hunter-Lab | 76.4664, 1.7122, 6.5797 |

Details

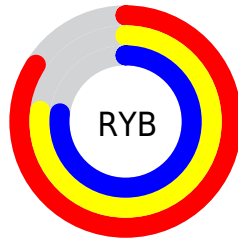
The CIELCh color $81, 6.735, 24.340$ is a light color, and the websafe version is hex `CCCCCC`. A complement of this color would be $84, 6.363, 203.821$, and the grayscale version is $81, 0.010, 296.813$.

A 20% lighter version of the original color is $100, 0.604, 74.594$, and $61, 6.782, 24.731$ is the 20% darker color. If you saturate the color by 10%, you get $75, 14.954, 24.998$, and if you desaturate by 10%, it is $87, 0.855, 204.696$.

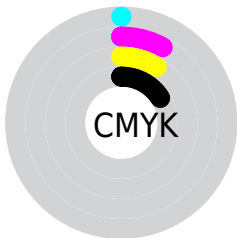
Distribution



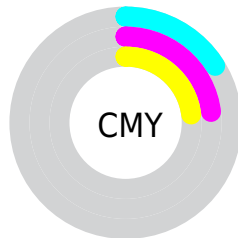
- Red (84%)
- Green (77%)
- Blue (77%)



- Red (84%)
- Yellow (77%)
- Blue (77%)



- Cyan (0%)
- Magenta (8%)
- Yellow (9%)
- Black (16%)



- Cyan (16%)
- Magenta (23%)
- Yellow (23%)

Brightness & Saturation Gradients

These gradients show how the CIELCh color 81, 6.735, 24.340 changes by changing the brightness by 10 percent. The first figure shows a shift by +10% for each color and the second figure -10%.

Similar to the brightness gradients but the following saturation gradients show a change of the CIELCh color 81, 6.735, 24.340 by changing the saturation by 10% instead.

 81, 6.735, 24.340

 81, 6.735, 24.340

 100, 6.735, 24.340

 71, 6.735, 24.340

 61, 6.735, 24.340

 51, 6.735, 24.340

 41, 6.735, 24.340

 31, 6.735, 24.340

 21, 6.735, 24.340

 11, 6.735, 24.340

 1, 6.735, 24.340

 0, 6.735, 24.340

81, 6.735, 24.340

81, 6.735, 24.340

75, 14.954, 24.998

87, 0.855, 204.696

70, 23.834, 25.812

92, 7.861, 203.767

65, 33.362, 26.895

97, 13.359,
198.614

60, 43.464, 28.329

56, 53.980, 30.201

52, 64.638, 32.563

49, 74.996, 35.343

47, 84.179, 38.137

45, 90.645, 40.182

Harmonies

Complementary

The Complementary color scheme is a pair of colors which are on the opposite of each other on the color wheel.



81, 6.735, 24.340



84, 6.363, 203.821

Rectangle

The Rectangle color scheme consists of four colors that form a rectangle on the color wheel.



81, 6.735, 24.340



81, 6.735, 74.340



81, 6.735, 204.340



81, 6.735, 254.340

Sweetspot

The Sweet Spot groups the original color and five complimentary colors.



81, 6.734, 24.358



98, 2.565, 23.916



81, 11.842, 326.279



52, 1.950, 24.006



0, 0.000, 0.000



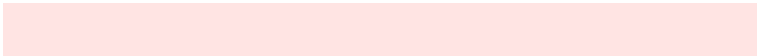
53, 0.007, 296.813

Same Dimension

The Same Dimension uses a secret algorithm to generate beautiful new colors.



81, 6.734, 24.358



93, 9.715, 24.495



83, 6.340, 79.470



42, 4.322, 24.393



36, 76.626, 40.545



5, 21.263, 22.380

Inverse Universe

The Inverse Universe completely reimagines the original color for something new.



84, 6.363, 203.821



98, 9.041, 203.727



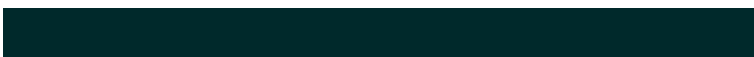
82, 6.256, 261.859



44, 4.068, 203.795



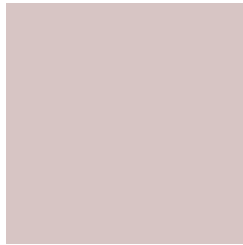
61, 34.630, 205.136



14, 13.738, 203.437

Previews

White Background



This preview shows how the CIELCh color 81, 6.735, 24.340 looks on a white background.

Color Contrast Check

Large Text (above 18pt) WCAG AA × Fail

Any Text WCAG AA × Fail

Large Text (above 18pt) WCAG AAA × Fail

Any Text WCAG AAA × Fail

Black Background



This preview shows how the CIE LCh color 81, 6.735, 24.340 looks on a black background.

Color Contrast Check

Large Text (above 18pt) WCAG AA ✓ Pass

Any Text WCAG AA ✓ Pass

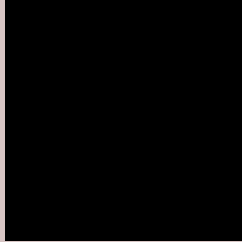
Large Text (above 18pt) WCAG AAA ✓ Pass

Any Text WCAG AAA ✓ Pass

If you want to check with other color combinations, try the [Color Contrast Checker](#).

CIELCh 81, 6.735, 24.340

Background



This preview shows how black text looks on a background with the CIELCh color 81, 6.735, 24.340.



This preview shows how white text looks on a background with the CIELCh color 81, 6.735, 24.340.

Color Blindness Simulation

Color vision deficiency is a very complex topic, and I could not describe the different causes any better than Wikipedia does, so if you want to learn more, you should check out their [article about color blindness](#).

Dichromacy



Original Color

81, 6.735, 24.340

Protanopia

81, 2.113, 49.340

Deuteranopia

81, 10.165, 14.206



Tritanopia
81, 11.340, 335.705

Trichromacy



Original Color
81, 6.735, 24.340

Protanomaly
81, 3.845, 35.511

Deuteranomaly
81, 8.990, 16.690

Tritanomaly
81, 8.789, 347.195

Monochromacy



Original Color
81, 6.735, 24.340

Achromatopsia
81, 0.010, 296.813

Achromatomaly
81, 2.575, 19.389

CSS Examples

Text

The CSS property to change the color of the text to CIELCh 81, 6.735, 24.340 is called "color". The color property can be set on classes, ids or directly on the HTML element.

This example shows how text in the color `rgb(215, 197, 196)` looks like.

```
.text, #text, p{  
    color:rgb(215, 197, 196)  
}
```

If you want to add a text shadow in that color use the text-shadow property, you can generate a text shadow directly with our [CSS Text Shadow Generator](#).

Here you see how black text with a 4 pixel rgb(215, 197, 196) colored shadow looks like.

```
.shadow{ text-shadow: 4px 4px 2px rgb(215, 197, 196) }
```

Border

The CSS property to change the border of an element to CIELCh 81, 6.735, 24.340 is called "border". The border property can be set on classes, ids or directly on the HTML element.

This example shows the color as border, it can be applied via the CSS property "border" or "border-color".

```
.border, #border, table{ border:4px solid rgb(215, 197, 196) }
```

If only the border color should be changed use the property border-color.

```
.border{ border-color:rgb(215, 197, 196) }
```

If you want to add a box shadow in that color use:

Here you see how a box with a 4 pixel rgb(215, 197, 196) colored shadow looks like.

```
.boxshadow{ -moz-box-shadow:4px 4px 4px  
4px rgb(215, 197, 196); -webkit-box-  
shadow:4px 4px 4px 4px rgb(215, 197, 196);  
box-shadow:4px 4px 4px 4px rgb(215, 197,  
196) }
```

Background

The CSS property to change the background color of an element to CIELCh 81, 6.735, 24.340 is called "background". The background property can be set on classes, ids or directly on the HTML element.

```
.background, #background, body{  
background: rgb(215, 197, 196) }
```

If only the background color should be changed can be used:

```
.background{ background-color: rgb(215,  
197, 196) }
```

This example shows the color as background, it is applied via the CSS property "background".

To optimize and compress your CSS code, you can use our [online CSS compressor and optimizer](#) based on csstidy. If you want to create a linear or radial gradient as background or border, check our [CSS Gradient Generator](#).

Hey! You found this booklet interesting? Support Converting Colors with the new Membership Option!

The pro membership hides all ads, plus gives you double the colors in the color bucket, and more awesome pro features!

[Learn more, Memberships starting at \\$2.50/m!](#)

**Follow me
on Twitter!**

@ConvertingColor